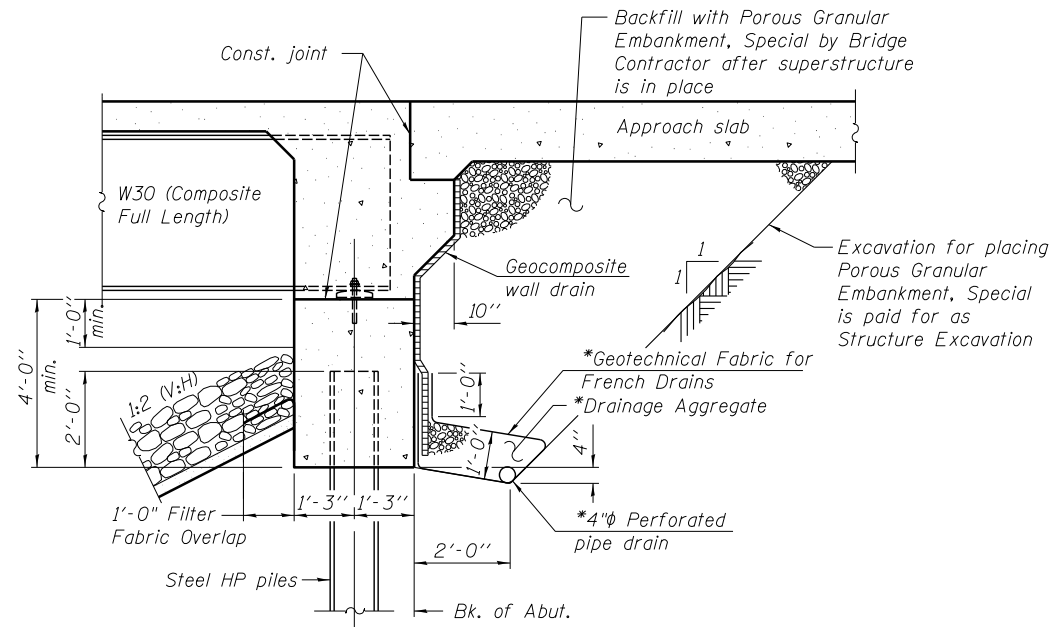


**GENERAL NOTES**

- Fasteners shall be ASTM A325 Type 1, mechanically galvanized bolts in painted areas and ASTM A325 Type 3 in unpainted areas. Bolts  $\frac{7}{8}$  in. dia., holes  $\frac{15}{16}$  in. dia., unless otherwise noted.
- Calculated weight of structural steel = 105,750 pounds.
- All structural steel shall be AASHTO M 270 Grade 50W.
- No field welding is permitted except as specified in the contract documents.
- Reinforcement bars designated (E) shall be epoxy coated.
- Bearing seat surfaces shall be constructed or adjusted to the designated elevations within a tolerance of  $\frac{1}{8}$  in. (0.01 ft.). Adjustment shall be made either by grinding the surface or shimming the bearings.
- Structural steel shall only be painted for a distance equal to the depth of embedment into the concrete cap plus 3 in. Painted areas shall be primed in the shop with a Department approved zinc rich primer. Field painting will not be required.
- Layout of the slope protection system may be varied to suit ground conditions in the field as directed by the Engineer.
- Seal coat thickness design is based on the Estimated Water Surface Elevation (EWSE). Cofferdam design details and proposed changes in seal coat thickness shall be submitted to the Engineer for approval with the cofferdam design.
- If the Contractor chooses to alter the temporary cantilevered sheet piling design requirements shown on the plans, a design submittal including plan details and calculations will be required for review and acceptance by the Engineer.
- Slipforming of the parapets is not allowed.
- Current Ratings on File for Existing Structure  
Inventory: HS 13.5  
Operating: HS 27.6  
Live Load Restrictions: No  
  
Inventory and Operating Ratings and Live Load Restrictions are provided for information only. Inventory and Operating Ratings are based on HS loading and configuration. Live Load Restrictions are based on Illinois legal loads and configurations. The Ratings and Live Load Restrictions are not necessarily representative of capacities to support the Contractor's equipment.
- The Contractor is advised that the existing PPC Deck Beams are in a deteriorated condition with reduced load carrying capacity. It is the Contractor's responsibility to account for the condition of the beams when developing construction procedures for removal and replacement of the superstructure.

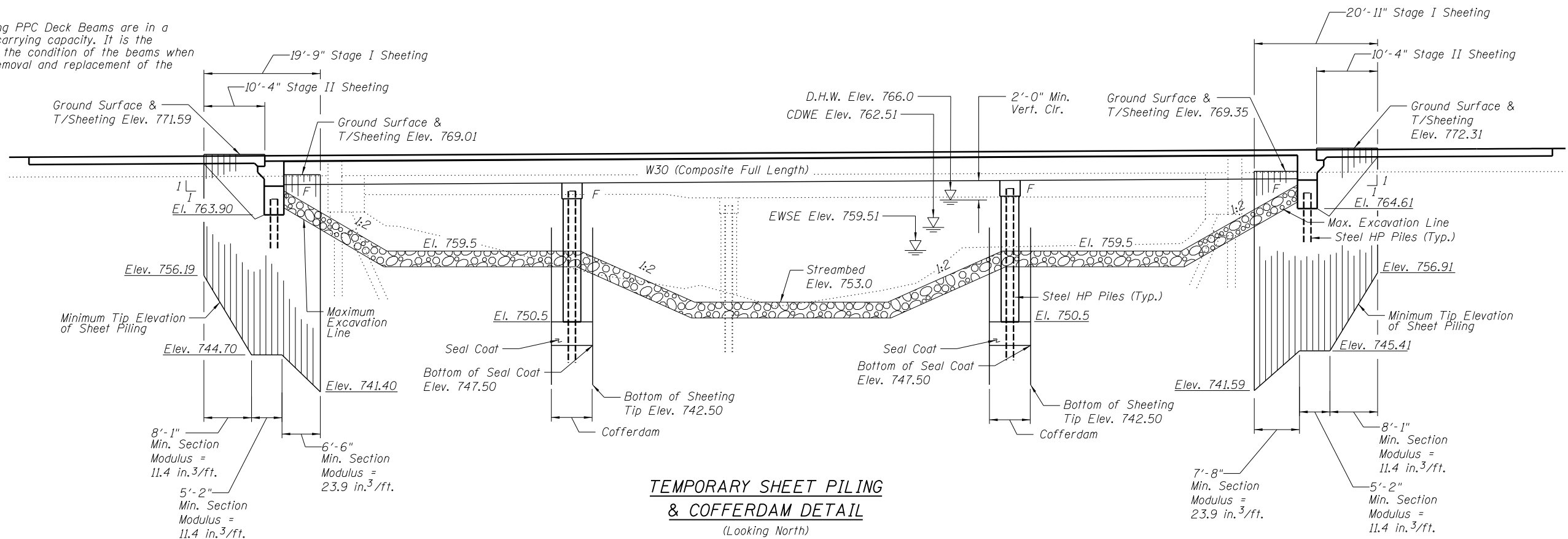


**SECTION THRU INTEGRAL ABUTMENT**  
(Horiz. dim. @ Rt. L's)

\*Included in the cost of Pipe Underdrain for Structures 4"  
All drainage system components shall extend to 2'-0" from the end of each wingwall except an outlet pipe shall extend from the wingwall on the low side until intersecting with the side slopes. The pipe shall drain into a concrete headwall. (See Article 601.05 of the Standard Specifications and Highway Standard 601101.)

**TOTAL BILL OF MATERIAL**

ITEM	UNIT	SUPER	SUB	TOTAL
Porous Granular Embankment, Special	Cu. Yd.		157	157
Stone Riprap Class A5	Sq. Yd.		1,400	1,400
Filter Fabric	Sq. Yd.		1,400	1,400
Removal of Existing Structures No. 2	Each		1	1
Structure Excavation	Cu. Yd.		226	226
Cofferdam Excavation	Cu. Yd.		464	464
Cofferdam (Type 2) (Location-3)	Each		1	1
Cofferdam (Type 2) (Location-4)	Each		1	1
Concrete Structures	Cu. Yd.		184.5	184.5
Concrete Superstructure	Cu. Yd.	316.9		316.9
Bridge Deck Grooving	Sq. Yd.	736		736
Seal Coat Concrete	Cu. Yd.		111.5	111.5
Concrete Encasement	Cu. Yd.		4.0	4.0
Protective Coat	Sq. Yd.	921		921
Furnishing and Erecting Structural Steel	L. Sum	0.5		0.5
Stud Shear Connectors	Each	4,338		4,338
Reinforcement Bars, Epoxy Coated	Pound	73,990	22,510	96,500
Bar Splicers	Each	672	196	868
Furnishing Steel Piles HP10x42	Foot		395	395
Furnishing Steel Piles HP12x53	Foot		720	720
Driving Piles	Foot		1,115	1,115
Test Pile Steel HP10x42	Each		2	2
Test Pile Steel HP12x53	Each		2	2
Pile Shoes	Each		32	32
Name Plates	Each	1		1
Anchor Bolts, 3/4"	Each		24	24
Anchor Bolts, 1"	Each		24	24
Geocomposite Wall Drain	Sq. Yd.		60	60
Pipe Underdrains for Structures 4"	Foot		144	144
Temporary Sheet Piling	Sq. Ft.		971	971
Asbestos Bearing Pad Removal	Each		32	32



STATION 744+04.00  
BUILT 20... BY  
STATE OF ILLINOIS  
F.A.P. RTE. 17 SEC. 4BR-6  
LOADING HL-93  
STRUCTURE NO. 008-0050

**NAME PLATE**  
See Std. 515001

**TEMPORARY SHEET PILING & COFFERDAM DETAIL**  
(Looking North)

FILE NAME = ...E4DB3-SN0080050-002-GenDetail.dgn



Zroka Engineering, P.C.  
4216 North Hermitage  
Chicago, IL 60613

USER NAME = SAW	DESIGNED - LAS	REVISED -
	CHECKED - JLA	REVISED -
PLOT SCALE = 0:2.0000 '1' / in.	DRAWN - SAW	REVISED -
PLOT DATE = 8/19/2013	CHECKED - LAS	REVISED -

**STATE OF ILLINOIS  
DEPARTMENT OF TRANSPORTATION**

**GENERAL DATA  
S.N. 008-0050**

SHEET NO. SB-2 OF SB-24 SHEETS

F.A.P. RTE.	SECTION	COUNTY	TOTAL SHEETS	SHEET NO.
17	4BR-6	CARROLL	150	65
CONTRACT NO. 64DB3				

ILLINOIS FED. AID PROJECT