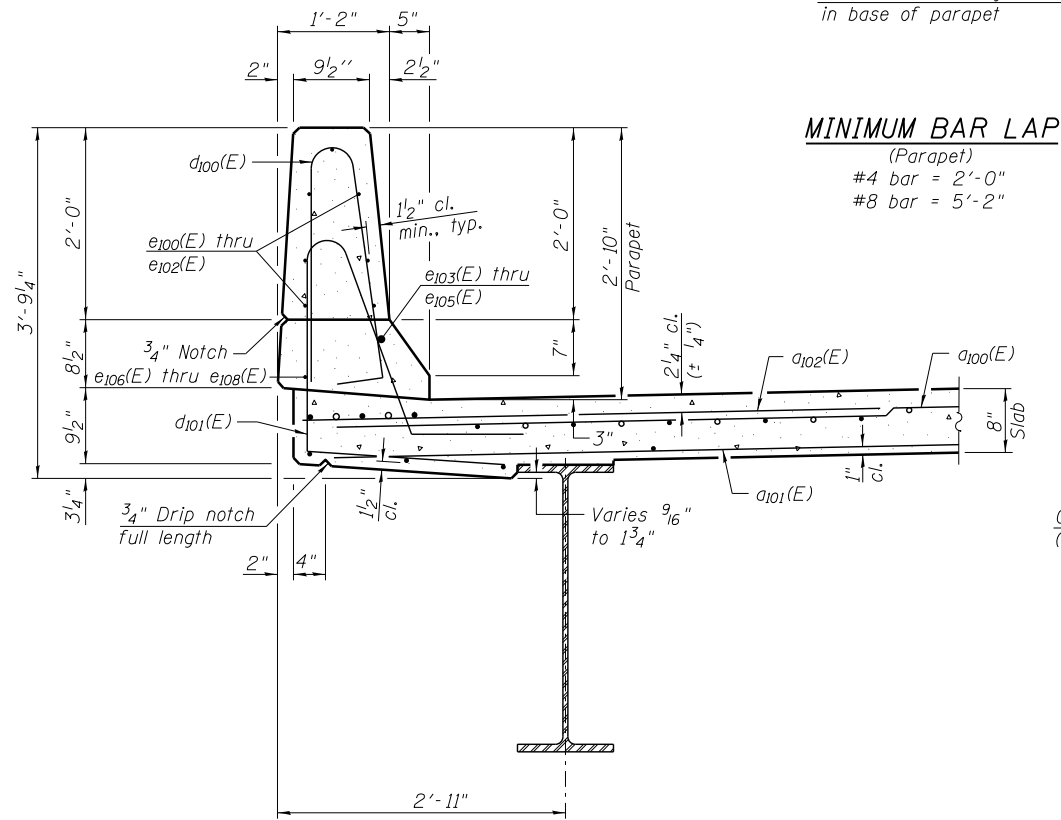


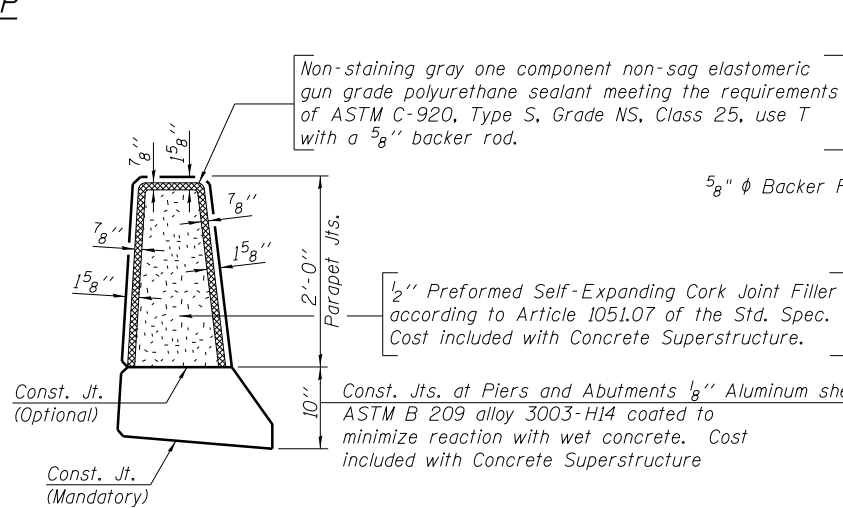
INSIDE ELEVATION OF PARAPET



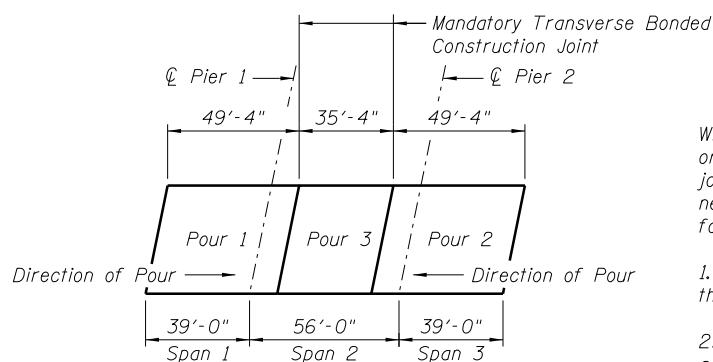
SECTION THRU PARAPET

MINIMUM BAR LAP

(Parapet)  
 #4 bar = 2'-0"  
 #8 bar = 5'-2"



PARAPET JOINT DETAILS



DECK POURING SEQUENCE

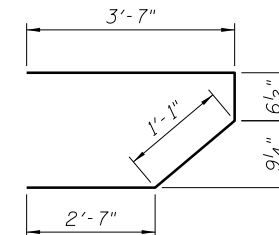
When the deck pour is stopped for the day at one or more of the transverse bonded construction joints in the deck pouring sequence as shown, the next pour shall not be made until both of the following are met:

1. At least 72 hours shall have elapsed from the end of the previous pour.
2. The concrete strength shall have attained a minimum flexural strength of 650 psi or a minimum compressive strength of 3500 psi.

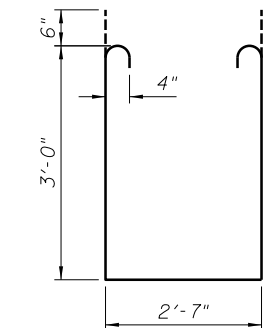
Non-staining gray one component non-sag elastomeric gun grade polyurethane sealant meeting the requirements of ASTM C-920, Type S, Grade NS, Class 25, use T with a 5/8" backer rod.

1/2" Preformed Self-Expanding Cork Joint Filler according to Article 1051.07 of the Std. Spec. Cost included with Concrete Superstructure.

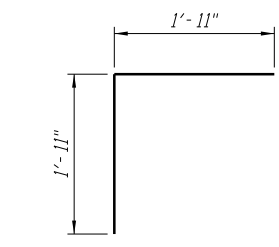
Const. Jts. at Piers and Abutments 1/8" Aluminum sheet ASTM B 209 alloy 3003-H14 coated to minimize reaction with wet concrete. Cost included with Concrete Superstructure



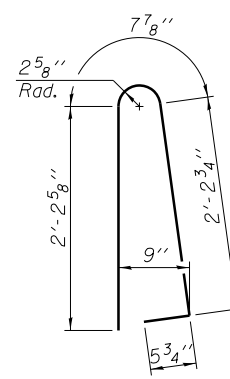
BAR s100(E)



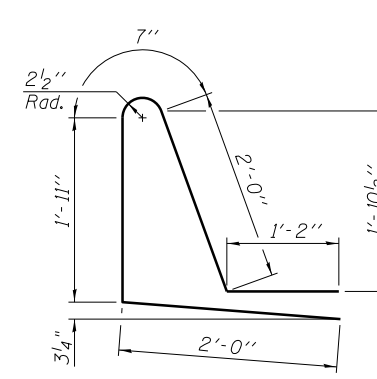
BAR s101(E)



BAR v100(E)



BAR d100(E)



BAR d101(E)

SUPERSTRUCTURE BILL OF MATERIAL

Bar	No.	Size	Length	Shape
a100(E)	532	#5	19'-1"	—
a101(E)	320	#5	18'-9"	—
a102(E)	532	#6	6'-6"	—
a103(E)	8	#5	22'-4"	—
b100(E)	252	#5	25'-0"	—
b101(E)	80	#6	28'-8"	—
b102(E)	252	#5	21'-11"	—
d100(E)	294	#5	5'-7"	⌋
d101(E)	294	#5	7'-8"	⌋
e100(E)	56	#4	15'-8"	—
e101(E)	56	#4	6'-7"	—
e102(E)	42	#4	13'-9"	—
e103(E)	8	#8	18'-6"	—
e104(E)	8	#8	6'-7"	—
e105(E)	4	#8	23'-8"	—
e106(E)	8	#4	16'-11"	—
e107(E)	8	#4	6'-7"	—
e108(E)	4	#4	22'-1"	—
m100(E)	20	#6	22'-4"	—
m101(E)	24	#6	10'-3"	—
m102(E)	8	#6	7'-5"	—
m103(E)	4	#6	3'-1"	—
m104(E)	4	#6	3'-6"	—
s100(E)	84	#5	7'-10"	⌋
s101(E)	84	#4	9'-7"	⌋
v100(E)	92	#5	3'-10"	⌋
Reinforcement Bars, Epoxy Coated	Pound		47,020	
Concrete Superstructure	Cu. Yd.		194.7	

Bars indicated thus: 1x2-#8 etc. indicates 1 line of bars with 2 lengths per line.

FILE NAME = ...E4DB3-SN0080050-011-SupDet.dgn



Zroka Engineering, P.C.  
 4216 North Hermitage  
 Chicago, IL 60613

USER NAME = SAW	DESIGNED - LAS	REVISED -
PLOT SCALE = 0:2.0000 'ft' / in.	CHECKED - JLA	REVISED -
PLOT DATE = 6/26/2013	DRAWN - SAW	REVISED -
	CHECKED - LAS	REVISED -

STATE OF ILLINOIS  
 DEPARTMENT OF TRANSPORTATION

SUPERSTRUCTURE DETAILS  
 S.N. 008-0050

SHEET NO. SB-11 OF SB-24 SHEETS

F.A.P. RTE.	SECTION	COUNTY	TOTAL SHEETS	SHEET NO.
17	4BR-6	CARROLL	150	74
				CONTRACT NO. 64DB3
ILLINOIS FED. AID PROJECT				