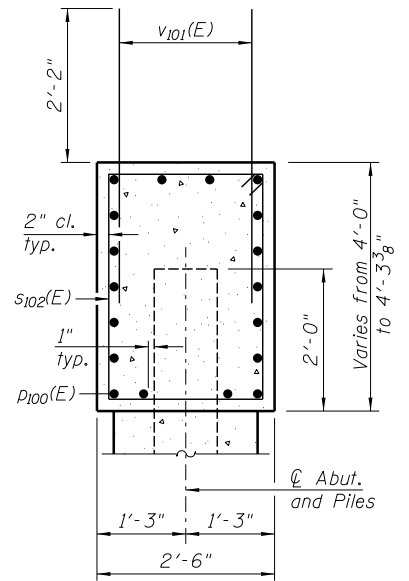
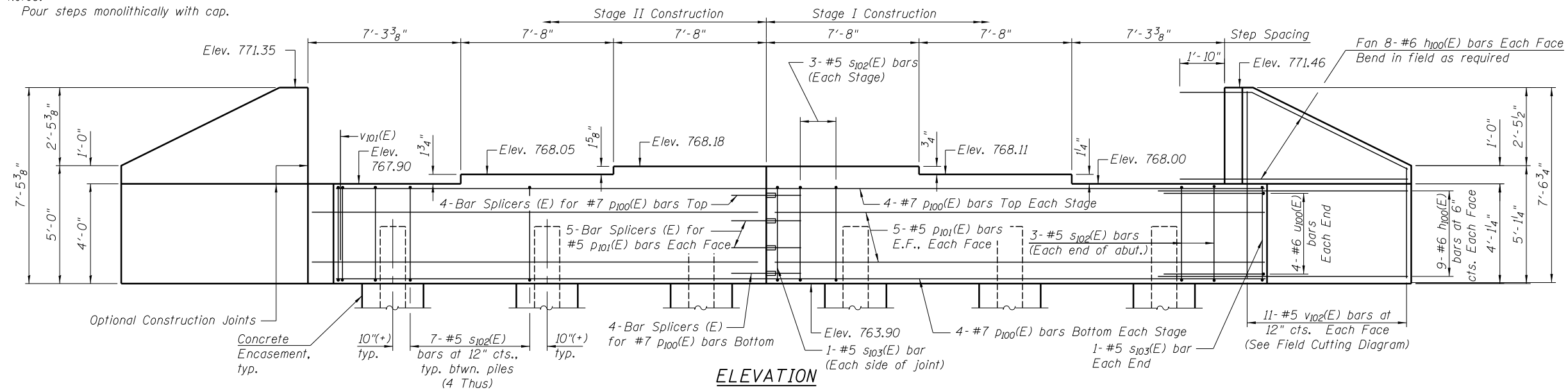


Notes:
Four steps monolithically with cap.

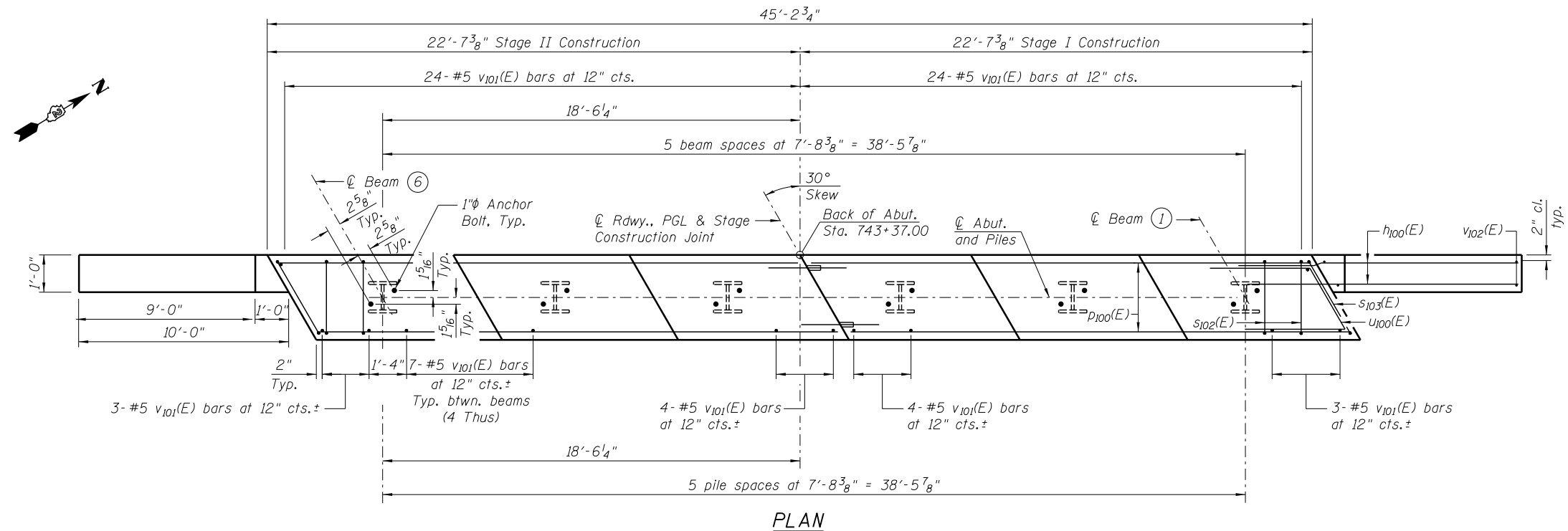


SEC. THRU ABUT.

BILL OF MATERIAL

Bar	No.	Size	Length	Shape
$h_{100}(E)$	68	#6	12'-0"	—
$p_{100}(E)$	16	#7	22'-3"	—
$p_{101}(E)$	20	#5	22'-3"	—
$s_{102}(E)$	40	#5	12'-7"	□
$s_{103}(E)$	4	#5	13'-3"	□
$u_{100}(E)$	8	#6	11'-3"	L/
$v_{101}(E)$	90	#5	4'-4"	—
$v_{102}(E)$	22	#5	11'-10"	—
Structure Excavation		Cu. Yd.	115	
Concrete Structures		Cu. Yd.	22.2	
Reinforcement Bars, Epoxy Coated		Pound	3,820	
Furnishing Steel Piles, HP10x42		Foot	195	
Test Pile Steel, HP10x42		Each	1	
Driving Piles		Foot	195	
Concrete Encasement		Cu. Yd.	2.0	
Pile Shoes		Each	6	

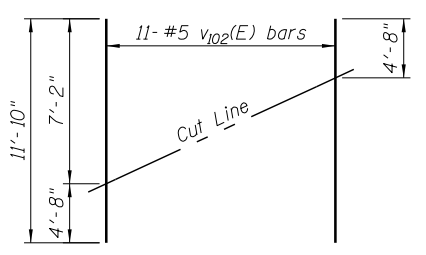
For details of Bar Splicers, see sheet SB-22 of SB-24.
For details of piles and Concrete Encasement, see sheet SB-23 of SB-24.
Space reinforcement in cap to miss anchor bolts.



PLAN

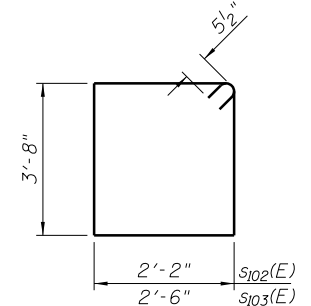
PILE DATA

Type: Steel HP10x42 with Pile Shoes
Nominal Required Bearing: 335k
Factored Resistance Available: 184k
Est. Length: 39.0'
No. Production Piles: 5
No. Test Piles: 1

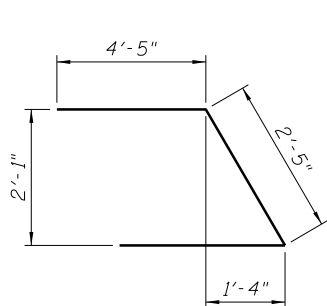


FIELD CUTTING DIAGRAM

Order $v_{102}(E)$ full length. Cut as shown and use remainder of bars in opposite face.



BAR $s_{102}(E)$ & $s_{103}(E)$



BAR $u_{100}(E)$

FILE NAME = ...E4083-SN0080050-018-WestAbut.dgn



USER NAME = SAW	DESIGNED - LAS	REVISED -
PLOT SCALE = 0:2.0000 '1' / in.	CHECKED - JLA	REVISED -
PLOT DATE = 8/19/2013	DRAWN - SAW	REVISED -
	CHECKED - LAS	REVISED -

STATE OF ILLINOIS
DEPARTMENT OF TRANSPORTATION

WEST ABUTMENT
S.N. 008-0050

SHEET NO. SB-18 OF SB-24 SHEETS

F.A.P. RTE.	SECTION	COUNTY	TOTAL SHEETS	SHEET NO.
17	4BR-6	CARROLL	150	81
CONTRACT NO. 64D83				

ILLINOIS FED. AID PROJECT