

GENERAL NOTES

This work shall be done according to the applicable portions of 503, 508, and 542 of the Standard Specifications.

Contractor shall field verify galvanized pipe length.

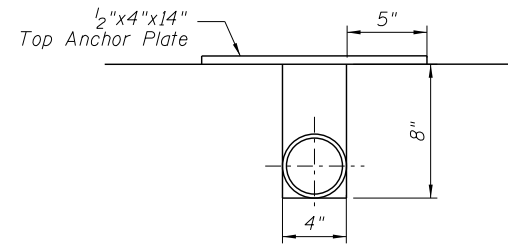
Class "SI" Concrete shall be used.

Steel pipes shall conform to A.S.T.M. A-53 (Type E or S) Grade B, Schedule 80, and shall be galvanized conforming to A.S.T.M. A-120.

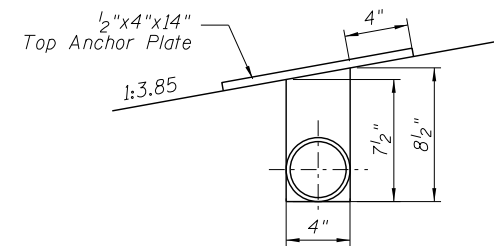
Steel plates shall conform to AASHTO M-183 and shall be galvanized conforming to AASHTO M-111.

Bolts, nuts, and washers shall be in accordance with Article 1006.08 of the Standard Specifications and shall be galvanized.

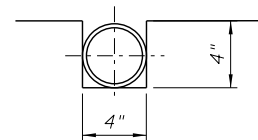
Exposed edges shall have a $\frac{3}{4}$ " chamfer.



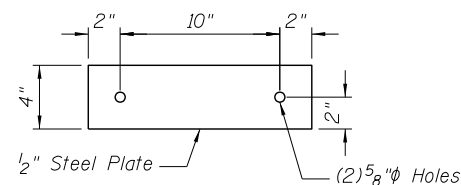
DETAIL A



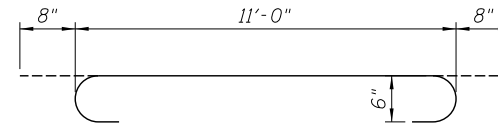
DETAIL B



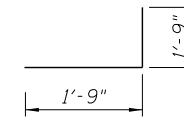
DETAIL C



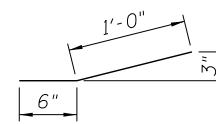
TOP ANCHOR PLATE



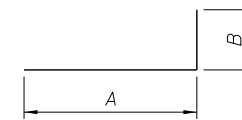
BAR a201



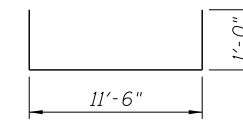
BAR d200



BAR h206



BARS v200 and v202



BAR v201

BAR BEND TABLE

Bar	A	B
v200	8'-0"	1'-0"
v202	3'-6"	1'-0"

BILL OF MATERIAL

Bar	No.	Size	Length	Shape
a200	34	#6	11'-0"	—
a201	34	#6	12'-4"	—
d200	8	#5	3'-6"	—
h200	30	#5	24'-4"	—
h201	8	#5	15'-6"	—
h202	8	#5	11'-0"	—
h203	4	#5	5'-8"	—
h204	4	#5	2'-9"	—
h205	8	#5	1'-6"	—
h206	2	#5	1'-6"	—
h207	4	#5	3'-3"	—
h208	20	#5	1'-4"	—
v200	8	#6	9'-0"	—
v201	24	#6	13'-6"	—
v202	34	#6	4'-6"	—
v203	4	#6	2'-2"	—
v204	4	#6	1'-6"	—
v205	4	#6	1'-1"	—
Item		Unit	Quantity	
Concrete Structures		Cu. Yd.	16.3	
Reinforcement Bars		Pound	3,150	
Traversable Pipe Grate		Foot	227	

BILL OF MATERIAL

(For Information Only)

3/2" Galvanized Steel Pipe	11@12'	132
	4@6.5'	26
	4@17'	69
Galvanized Steel Pipe Caps	Each	38
9" Square or 1/4" Galvanized Steel Plate	Each	22
1/2"x4"x14" Galvanized Steel Plate	Each	22
5/8"x9" Galvanized Steel Bolts	Each	44
1/2" Galvanized Exp. Bolts	Each	44

FILE NAME = ...E4DB3-SN008106-004-DrpBoxDetails.dgn



Zroka Engineering, P.C.
4216 North Hermitage
Chicago, IL 60613

USER NAME = SAW
PLOT SCALE = 0:2.0000 '1' / in.
PLOT DATE = 6/26/2013

DESIGNED - JLA
CHECKED - DAZ
DRAWN - SAW
CHECKED - JLA

REVISED -
REVISED -
REVISED -
REVISED -

STATE OF ILLINOIS
DEPARTMENT OF TRANSPORTATION

GRATED DROP BOX DETAILS
S.N. 008-1106

SHEET NO. SC-4 OF SC-7 SHEETS

F.A.P. RTE.	SECTION	COUNTY	TOTAL SHEETS	SHEET NO.
17	4BR-5	CARROLL	150	91
				CONTRACT NO. 64DB3
ILLINOIS FED. AID PROJECT				