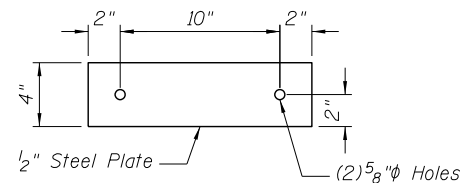
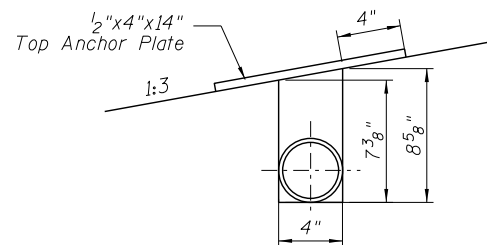


NOTCH DETAIL



TOP ANCHOR PLATE



DETAIL A

GENERAL NOTES

This work shall be done according to the applicable portions of 503, 508, and 542 of the Standard Specifications.

Contractor shall field verify galvanized pipe length.

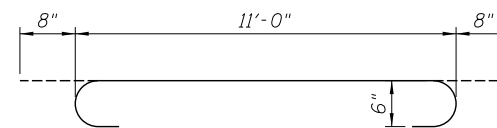
Class "SI" Concrete shall be used.

Steel pipes shall conform to A.S.T.M. A-53 (Type E or S) Grade B, Schedule 80, and shall be galvanized conforming to A.S.T.M. A-120.

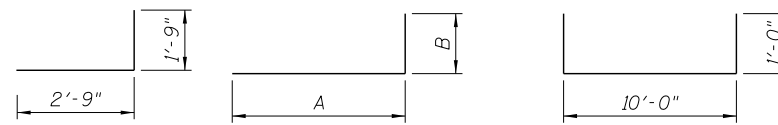
Steel plates shall conform to AASHTO M-183 and shall be galvanized conforming to AASHTO M-111.

Bolts, nuts, and washers shall be in accordance with Article 1006.08 of the Standard Specifications and shall be galvanized.

Exposed edges shall have a 3/4 inch chamfer.



BAR a201



BAR d201

BARS v200 and v206

BAR v207

BAR BEND TABLE

Bar	A	B
v200	8'-0"	1'-0"
v206	1'-6"	1'-0"

BILL OF MATERIAL

Bar	No.	Size	Length	Shape
a200	34	#6	11'-0"	—
a201	32	#6	12'-4"	⌋
d201	12	#5	4'-6"	⌋
h202	4	#5	11'-0"	—
h203	4	#5	5'-8"	—
h204	4	#5	2'-9"	—
h205	8	#5	1'-6"	—
h207	4	#5	3'-3"	—
h210	24	#5	23'-2"	—
h211	16	#5	21'-8"	—
h212	2	#5	2'-0"	—
h213	20	#5	1'-4"	—
v200	8	#6	9'-0"	⌋
v203	4	#6	2'-2"	—
v204	4	#6	1'-6"	—
v205	4	#6	1'-1"	—
v206	2	#6	2'-6"	⌋
v207	27	#6	12'-0"	⌋
Item		Unit	Quantity	
Concrete Structures		Cu. Yd.	14.1	
Reinforcement Bars		Pound	2,870	
Traversable Pipe Grate		Foot	195.5	

BILL OF MATERIAL

(For Information Only)

3 1/2" Galvanized Steel Pipe	3 @ 23.5'	70.5
	10 @ 12.5'	125
Galvanized Steel Pipe Caps	Each	26
9" Square or 1/4" Galvanized Steel Plate	Each	20
1/2"x4"x14" Galvanized Steel Plate	Each	20
5/8"x9" Galvanized Steel Bolts	Each	30
1/2" Galvanized Exp. Bolts	Each	40

FILE NAME = ...E4DB3-SN008106-006-GratedExtensionDetails.dgn



Zroka Engineering, P.C.
4216 North Hermitage
Chicago, IL 60613

USER NAME = SAW
PLOT SCALE = 0:2.0000 '1' / in.
PLOT DATE = 6/26/2013

DESIGNED - JLA
CHECKED - DAZ
DRAWN - SAW
CHECKED - JLA

REVISED -
REVISED -
REVISED -
REVISED -

STATE OF ILLINOIS
DEPARTMENT OF TRANSPORTATION

GRATED CULVERT EXTENSION DETAILS
S.N. 008-1106

SHEET NO. SC-6 OF SC-7 SHEETS

F.A.P. RTE.	SECTION	COUNTY	TOTAL SHEETS	SHEET NO.
17	4BR-5	CARROLL	150	93
CONTRACT NO. 64D83				
ILLINOIS FED. AID PROJECT				