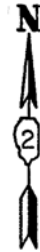
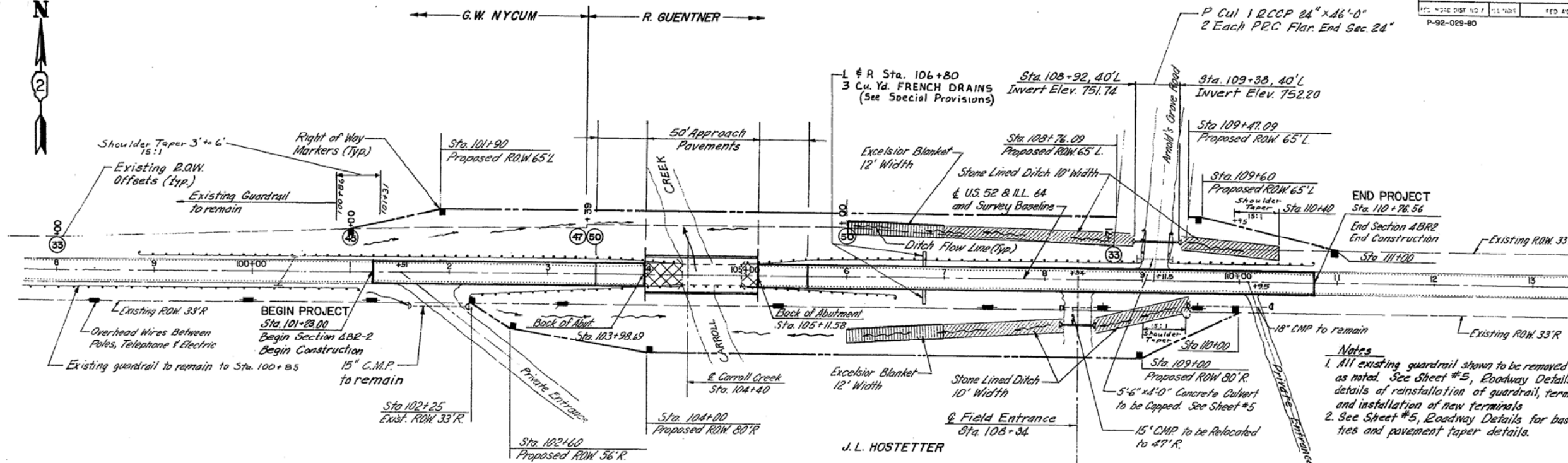


S.G.S. DATUM  
th GA 1929



BENCHMARK  
CHISELED ON NW WINGWALL  
STA. 104+35.4 EL. 747.08

F.A.P. R.T.E.	SECTION	COUNTY	TOTAL SHEETS	SHEET NO.
17	4BR-2	CARROLL	18	4
STA. 101+88 TO STA 110+76.56				
P-92-029-80				



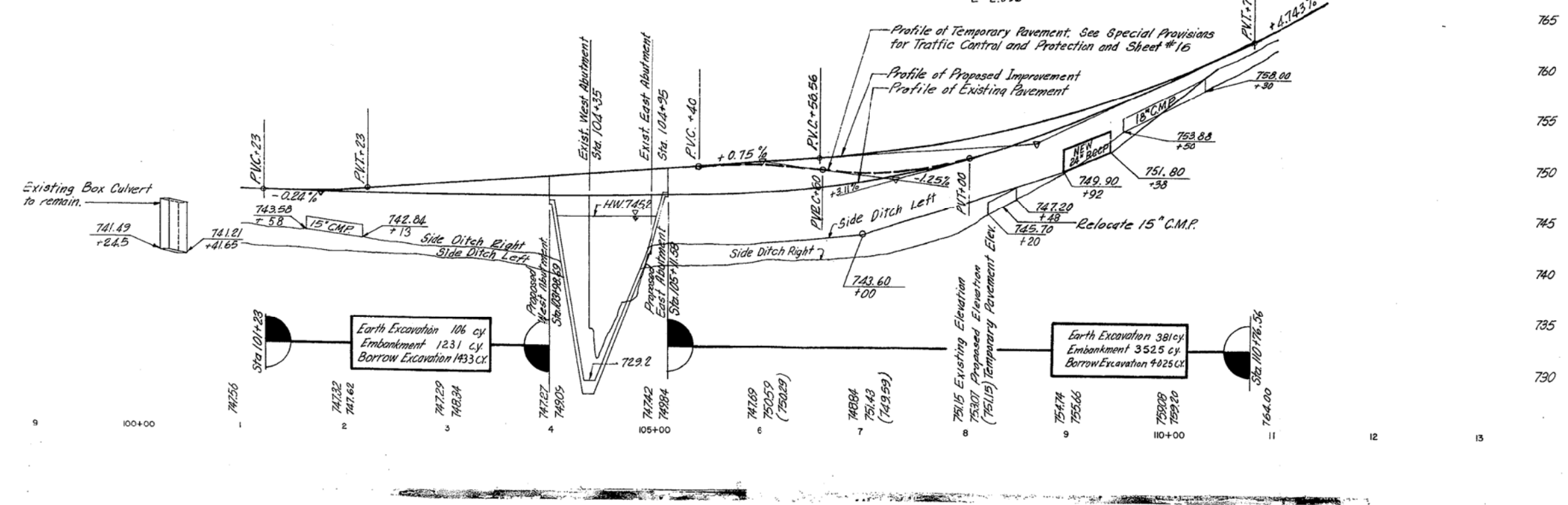
- Notes**
- All existing guardrail shown to be removed except as noted. See Sheet #5, Roadway Details for details of reinstallation of guardrail, terminals and installation of new terminals
  - See Sheet #5, Roadway Details for baseline ties and pavement taper details.

Curve #1  
PVI = Sta. 101+73  
Elev. = 747.39  
V.C. = 100'  
E = 0.124'

Temporary Curve #3  
PVI = Sta. 106+00  
Elev. = 750.59  
V.C. = 120'  
E = 0.30'

Temporary Curve #4  
PVI = Sta. 107+30  
Elev. = 748.97  
V.C. = 140'  
E = 0.76'

Curve #2  
PVI = Sta. 108+66.56  
Elev. = 752.59  
V.C. = 420'  
E = 2.096'



FILE NAME = ... \D264DB3-SHT-Ex-Bridge.dgn

USER NAME = SAW  
PLOT SCALE = 40.0000' / in.  
PLOT DATE = 6/27/2013

DESIGNED - RAC  
DRAWN - LCR  
CHECKED - DAZ  
DATE - 06-28-13

REVISED -  
REVISED -  
REVISED -  
REVISED -

STATE OF ILLINOIS  
DEPARTMENT OF TRANSPORTATION

**ZROKA**  
engineering  
Zroka Engineering, P.C.  
4216 North Hermitage  
Chicago, IL 60613

EXISTING BRIDGE PLANS - 1933  
FOR INFORMATION ONLY

F.A.P. R.T.E.	SECTION	COUNTY	TOTAL SHEETS	SHEET NO.
17	4BR-5 & 4BR-6	CARROLL	150	96
CONTRACT NO. 64DB3				
ILLINOIS FED. AID PROJECT				

SCALE: SHEET OF SHEETS STA. TO STA.