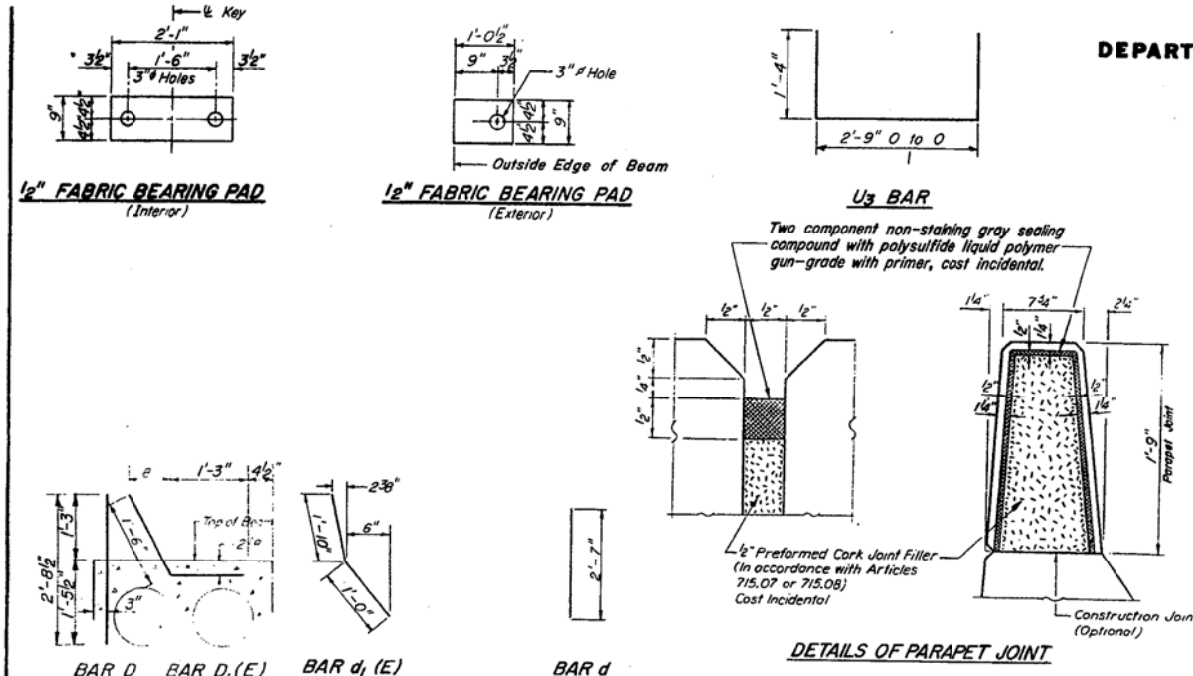
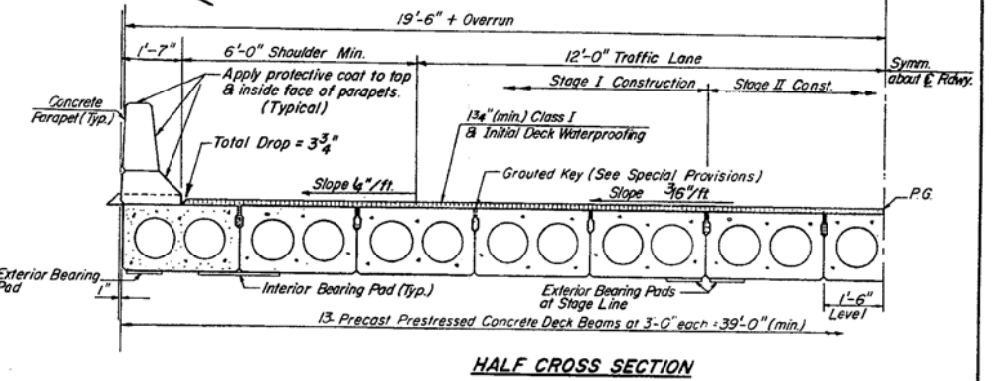
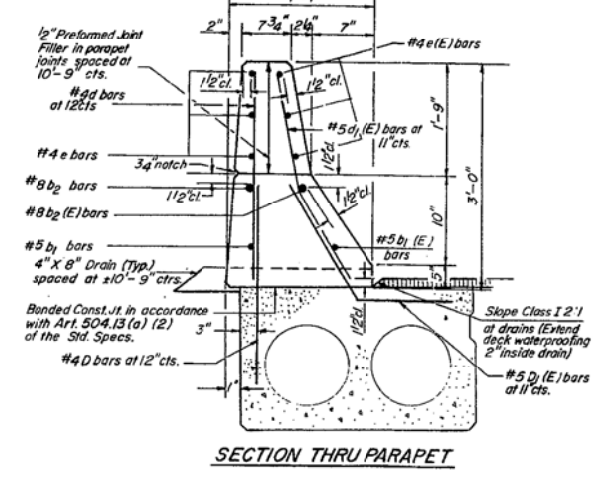
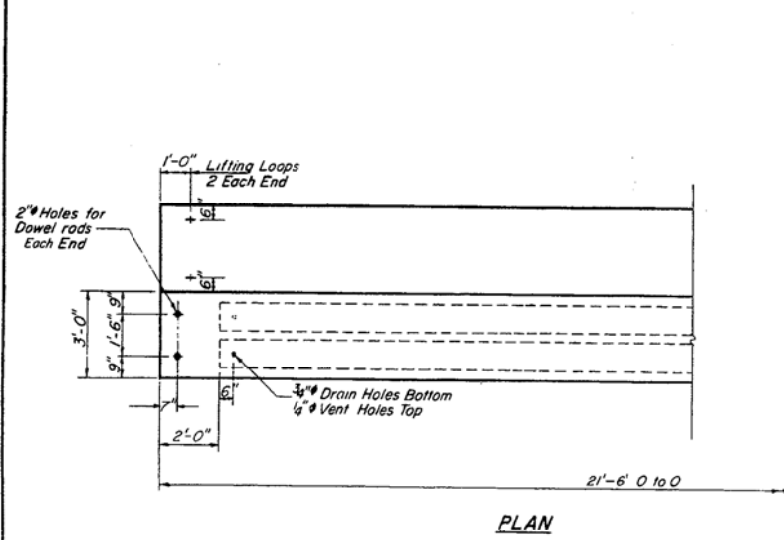
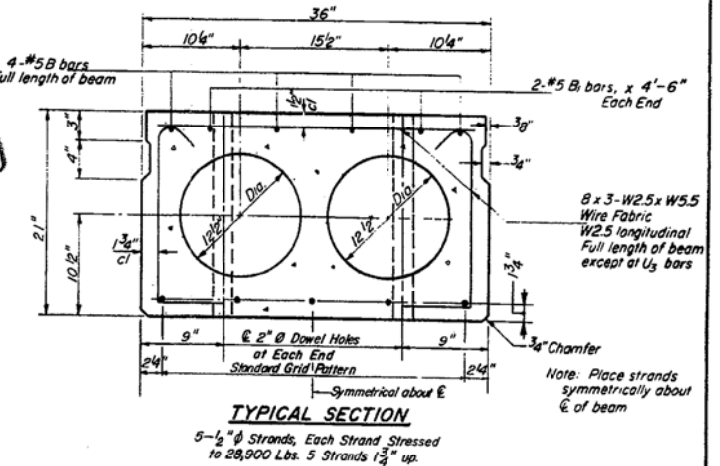


STATE OF ILLINOIS  
DEPARTMENT OF TRANSPORTATION

ROUTE NO.	SECTION	COUNTY	SHEET NO.	SHEET NO.
17	4BR-2	CARROLL	18	13
SHEET NO. 3 SHEETS 6				



*Deck now has PC cone overlay*



**BILL OF MATERIAL**

Bar	No	Size	Length	Shape
b <sub>1</sub>	2	#5	21'-3"	
b <sub>1</sub> (E)	2	#5	21'-3"	
b <sub>2</sub>	2	#8	21'-3"	
b <sub>2</sub> (E)	2	#8	21'-3"	
d	44	#4	2'-7"	
d <sub>1</sub> (E)	52	#5	2'-10"	
e	12	#4	10'-6"	
e (E)	12	#4	10'-6"	
Precast Prestressed Concrete Deck Beams	Sq. Ft.		838.5	
Class X Concrete	Cu. Yd.		4.9	
Reinforcement Bars	Lb		320	
Reinforcement Bars (epoxy coated)	Lb		400	

**NOTES**

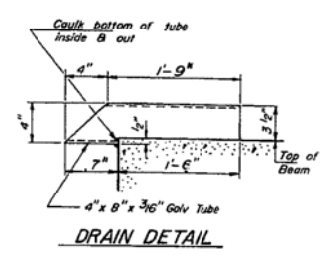
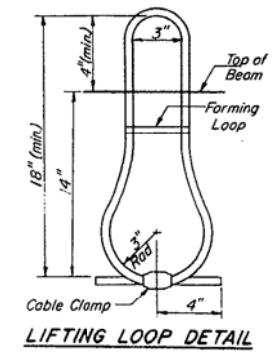
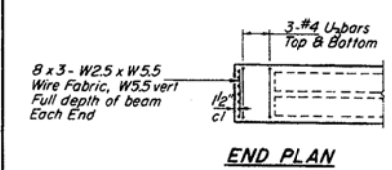
Prestressing steel shall be non-galvanized high strength, stress-relieved 7-wire strand, Grade 270. The nominal diameter shall be 1/2" and the nominal cross-sectional area shall be 0.153 sq. in. Lifting loops shall be 1/2" inch diameter, 6 x 25 class wire rope with fiber core and shall have a minimum ultimate tensile strength of 21,000 lbs. Burn off after deck beam erection.

Reinforcement bars shall conform to AASHTO M-31 or M-53, Grade 60. The bearing seat surfaces shall be adjusted by shimming to assure firm and even bearing. Two 1/8" fabric adjusting shims of the dimensions of the Exterior Bearing Pad shall be provided for each bearing.

Inserts for temporary bridge rail shall be cast in deck beams at locations indicated on the staging plans, and detailed on the Temporary Bridge Rail Sheet No. 8 of 8.

Keyway surfaces shall be cleaned to remove form, oil and other bond-breaking materials prior to beam shipment.

Cleaning shall be done by sand blasting the keyway areas from the top of the beams to the bottom edge of the key.



DESIGNED	R.A.R.
CHECKED	G.S.P.
DRAWN	J.A.W.
CHECKED	R.A.R. G.S.P.

PD-3-S 6-15-80

**SUPERSTRUCTURE**  
SPAN I  
F.A.17 (S.B.I. ROUTE 27) SEC. 4BR-2  
CARROLL COUNTY  
STA. 104+40

SCALE: AS NOTED  
DATE: 4/30/82

SCHUMACHER AND SVOBODA, INC.  
CONSULTING ENGINEERS  
CHICAGO, ILLINOIS