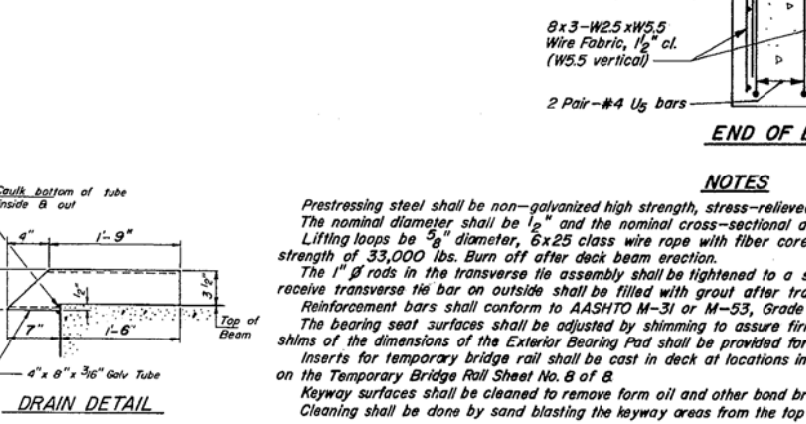
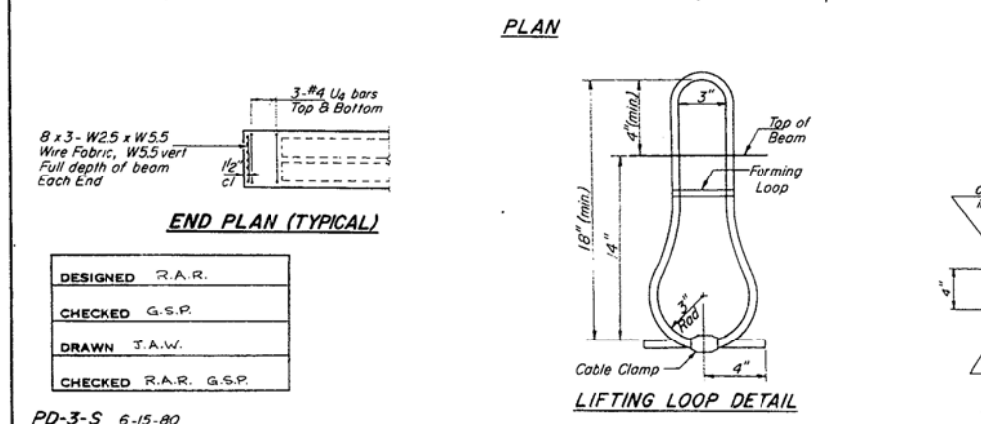
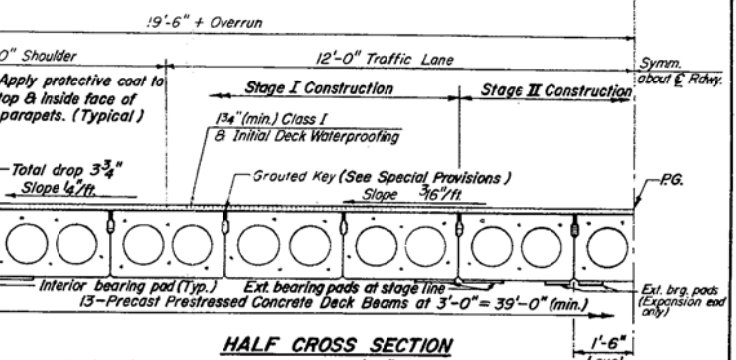
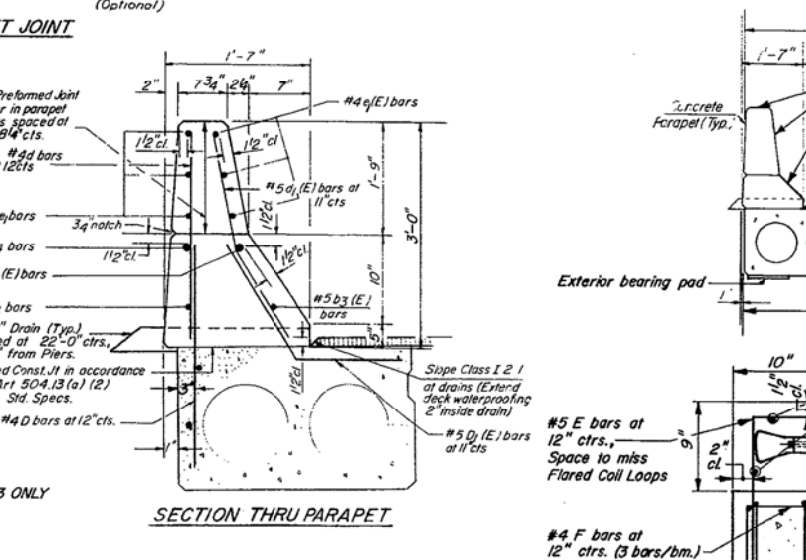
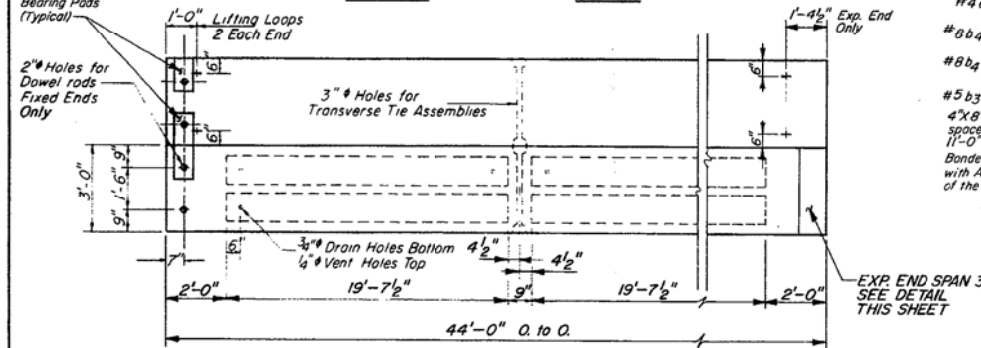
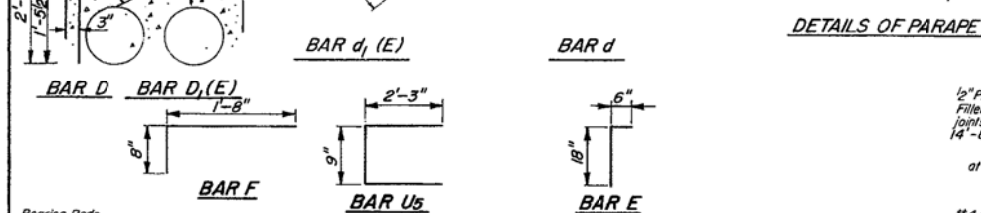
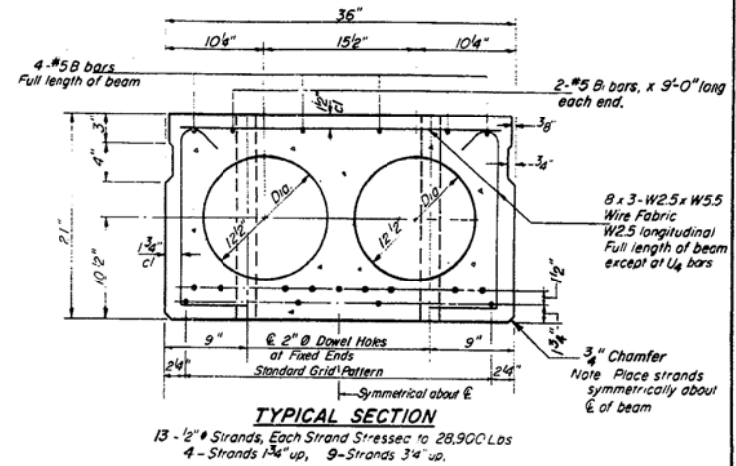
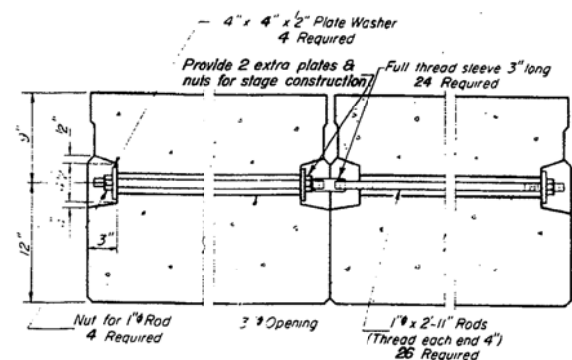
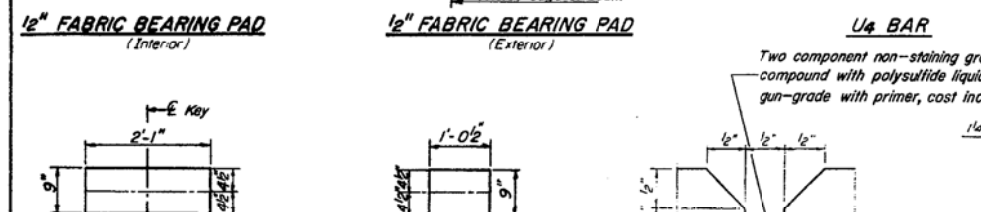
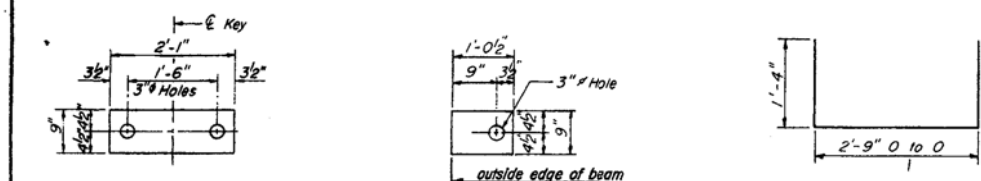


STATE OF ILLINOIS
DEPARTMENT OF TRANSPORTATION

| | | | | |
|----------|------|-------|--------------|-----------|
| DATE | REV. | BY | TOTAL SHEETS | SHEET NO. |
| 11-27 | 17 | 4BR-2 | 18 | 14 |
| SHEETS 8 | | | | |



SPANS 2 & 3

BILL OF MATERIAL

| Bar | No | Size | Length | Shape |
|---|---------|------|--------|-------|
| b3 | 4 | #5 | 43'-9" | |
| b3 (E) | 4 | #5 | 43'-9" | |
| b4 | 4 | #8 | 43'-9" | |
| b4 (E) | 4 | #8 | 43'-9" | |
| d | 180 | #4 | 2'-7" | |
| d1 (E) | 196 | #5 | 2'-10" | |
| a1 | 36 | #4 | 14'-5" | |
| a1 (E) | 36 | #4 | 14'-5" | |
| a | 3 | #5 | 16'-0" | |
| a1 | 3 | #5 | 23'-9" | |
| Precast Prestressed Concrete Deck Beams | Sq. Ft. | | 3432 | |
| Class X Concrete | Cu. Yd. | | 20.0 | |
| Reinforcement Bars | Lb. | | 1430 | |
| Reinforcement Bars (epoxy coated) | Lb. | | 1580 | |

NOTES

Prestressing steel shall be non-galvanized high strength, stress-relieved 7-wire strand Grade 270. The nominal diameter shall be 1/2" and the nominal cross-sectional area shall be 0.153 sq. in. Lifting loops be 5/8" diameter, 6x25 class wire rope with fiber core and shall have a minimum ultimate tensile strength of 33,000 lbs. Burn off after deck beam erection.

The 1" rods in the transverse tie assembly shall be tightened to a snug fit and the threads set. Packets that receive transverse tie bar on outside shall be filled with grout after transverse tie assembly is in place.

Reinforcement bars shall conform to AASHTO M-31 or M-53, Grade 60.

The bearing seat surfaces shall be adjusted by shimming to assure firm and even bearing. Two 1/2" fabric adjusting shims of the dimensions of the Exterior Bearing Pad shall be provided for each bearing.

Inserts for temporary bridge rail shall be cast in deck at locations indicated on the staging plans, and detailed on the Temporary Bridge Rail Sheet No. 8 of B.

Keyway surfaces shall be cleaned to remove form oil and other bond breaking materials prior to beam shipment. Cleaning shall be done by sand blasting the keyway areas from the top of the beams to the bottom edge of the key.

DESIGNED R.A.R.
CHECKED G.S.P.
DRAWN J.A.W.
CHECKED R.A.R. G.S.P.

PD-3-S 6-15-80

SUPERSTRUCTURE
SPANS 2 & 3
F.A.17 (S.B.I. ROUTE 27) SEC. 4BR-2
CARROLL COUNTY
STA. 104+40

SCALE: AS NOTED
DATE: 4/30/82

SCHUMACHER AND SVOBODA, INC.
CONSULTING ENGINEERS
CHICAGO, ILLINOIS