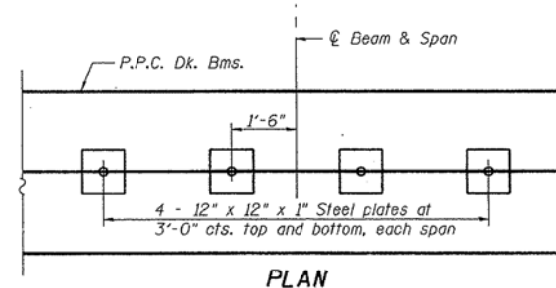
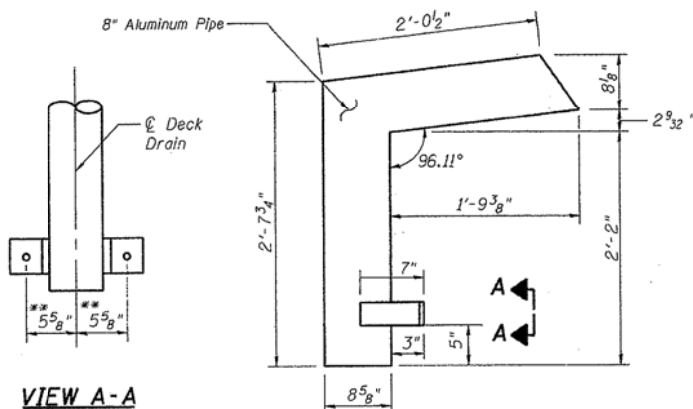
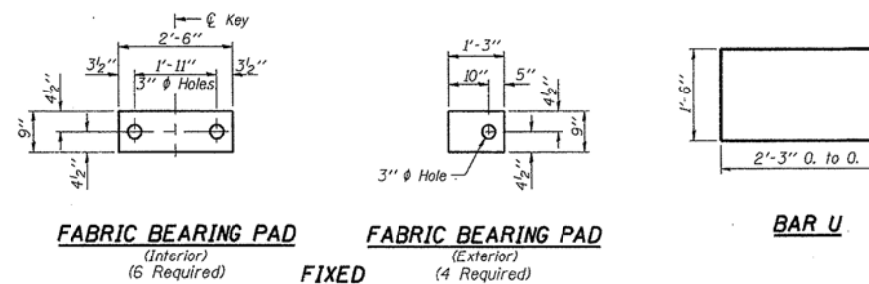
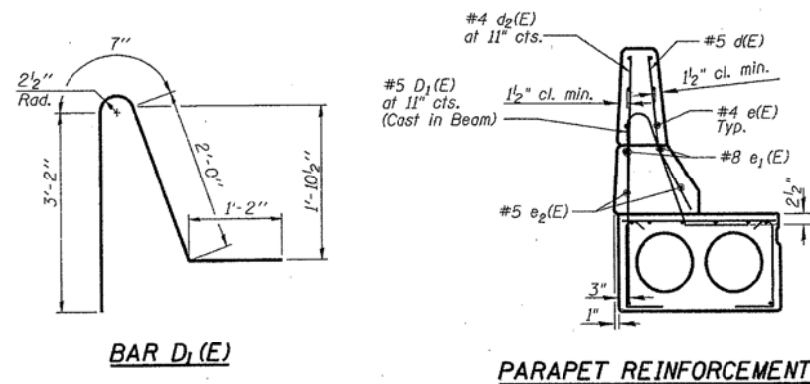


STATE OF ILLINOIS
DEPARTMENT OF TRANSPORTATION

ROUTE NO.	SECTION	DATE	SHEET NO.
F.A.P. 17	CARROLL	27	13
FED. ROAD DIST. NO. 7	ILLINOIS	FED. AID PROJECT	

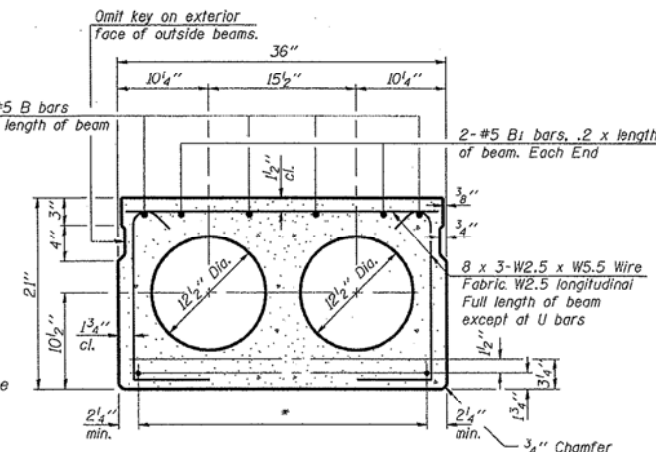
SHEET NO. 3
4 SHEETS



***TRANSVERSE
PLACEMENT GUIDELINES**

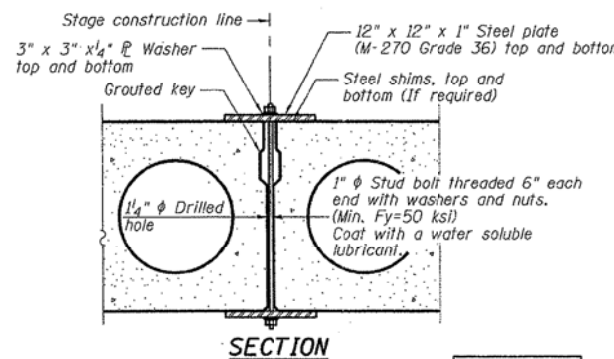
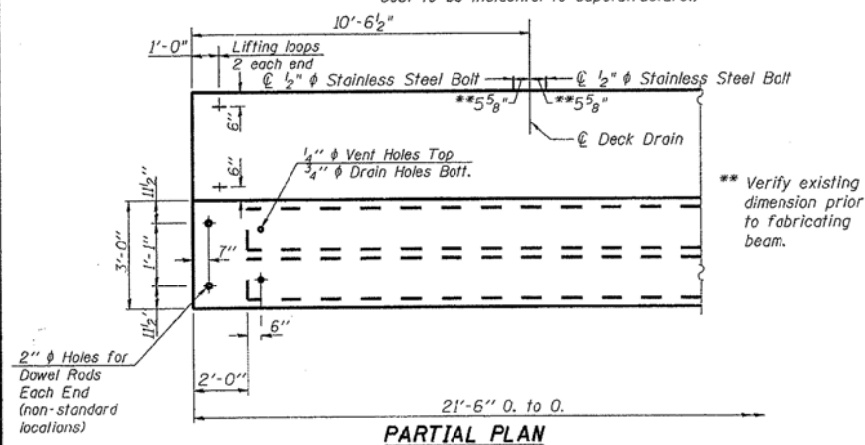
1. Place strands symmetrically about centerline of beam.
2. The minimum distance from center to center of strands in all directions shall be 2".
3. The minimum clearance from strand to dowel hole shall be 1/2".
4. The minimum clearance from strand to void shall be 1/2".

Vertical placement of strands shall not be adjusted to satisfy the above guidelines.

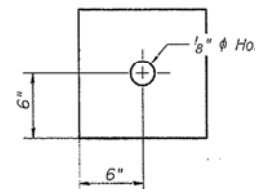


TYPICAL SECTION
1/2" ϕ Strands, Each Strand Stressed to 30,900 Lbs.
3-Strands 1 3/4" up, 2-Strands 3/4" up

Note:
Place strands symmetrically about ϕ of beam.



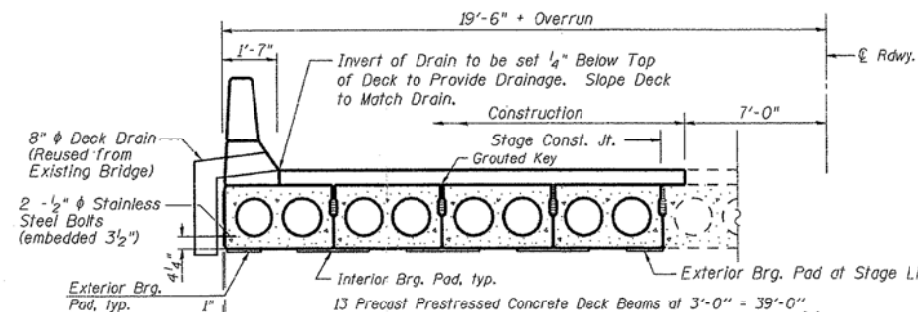
Notes:
See Special Provisions for Stage Construction Precast Prestressed Concrete Deck Beams.
See Stage Construction Detail for traffic lane.
Cost is included with Precast Prestressed Concrete Deck Beams.



**SHEAR KEY CLAMPING DETAIL
AT STAGE CONST. JT.**

NOTES

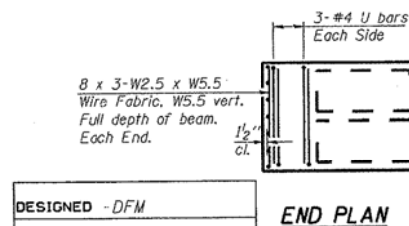
Prestressing steel shall be uncoated high strength, low relaxation 7-wire strand, Grade 270. The nominal diameter shall be 1/2" and the nominal cross-sectional area shall be 0.153 sq. in. Lifting loops shall be 2 - 1/2" ϕ - 270 ksi strands, as shown. Non prestressing steel shall conform to ASTM A 706 (IL MOD), Grade 60. The bearing seat surfaces shall be adjusted by shimming to assure firm and even bearing. Two 1/2" fabric adjusting shims of the dimensions of the Exterior Bearing Pad shall be provided for each bearing. Keyway surfaces shall be cleaned to remove form oil or other bond breaking material prior to shipment of the beams. Cleaning shall be done by sandblasting the keyway areas between top of the beam and the bottom edge of the key. Corrosion inhibitor, per Article 1020.05(b)(12) of the Standard Specifications, shall be used in the concrete for precast prestressed concrete deck beams. Required Release Strength, f'cl, shall be 4000 p.s.i.



PARTIAL CROSS SECTION

BILL OF MATERIAL

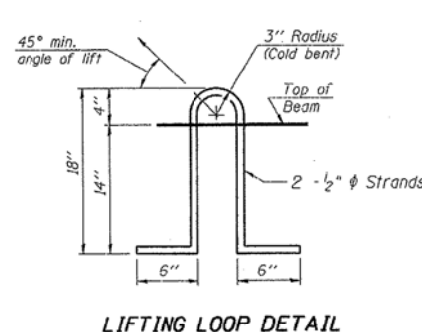
Material	Sq. Ft.	258
Precast Prestressed Conc. Deck Bms.		



DESIGNED - DFM
CHECKED - RB
DRAWN - EBS
CHECKED - DFM

PD-3-S

11-1-06



LIFTING LOOP DETAIL

**DECK BEAM DETAILS
SPAN 1
F.A.P. 17 (US RTE 52 & IL RTE 64)
CARROLL COUNTY
STRUCTURE NO. 008-0029**

FILE NAME = ... \0264083-SHT-ExBridge.dgn

USER NAME = SAW
PLOT SCALE = 40.0000' / in.
PLOT DATE = 6/27/2013

DESIGNED - RAC
DRAWN - LCR
CHECKED - DAZ
DATE - 06-28-13

REVISED -
REVISED -
REVISED -
REVISED -

STATE OF ILLINOIS
DEPARTMENT OF TRANSPORTATION

ZROKA
engineering

Zroka Engineering, P.C.
4216 North Hermitage
Chicago, IL 60613

EXISTING BRIDGE PLANS - 1982
FOR INFORMATION ONLY

SCALE: SHEET OF SHEETS STA. TO STA.

F.A.P. RTE.	SECTION	COUNTY	TOTAL SHEETS	SHEET NO.
17	4BR-5 & 4BR-6	CARROLL	150	107
			CONTRACT NO. 64D83	
ILLINOIS FED. AID PROJECT				