

INDEX of SHEETS

Sheet No.	Title Sheet
2	Standard Cross Sections No. 1032 & 1130
3	Plan & Profile Sta. 21196 to Sta. 30100
4	" " " " " " 30100 " " 40100
5	" " " " " " 40100 " " 440100
6	" " " " " " 440100 " " 260100
7	" " " " " " 260100 " " 260100
8	" " " " " " 260100 " " 320100
9	" " " " " " 320100 " " 380100
10	" " " " " " 380100 " " 440100
11	" " " " " " 440100 " " 445145
12-49 Inclusive-Cross Sections	
49	Standard Culvert Design 610-7, 628-1
48	Standards No. 045, 047
50	" " " " " " 1085, 1162

SUMMARY of QUANTITIES

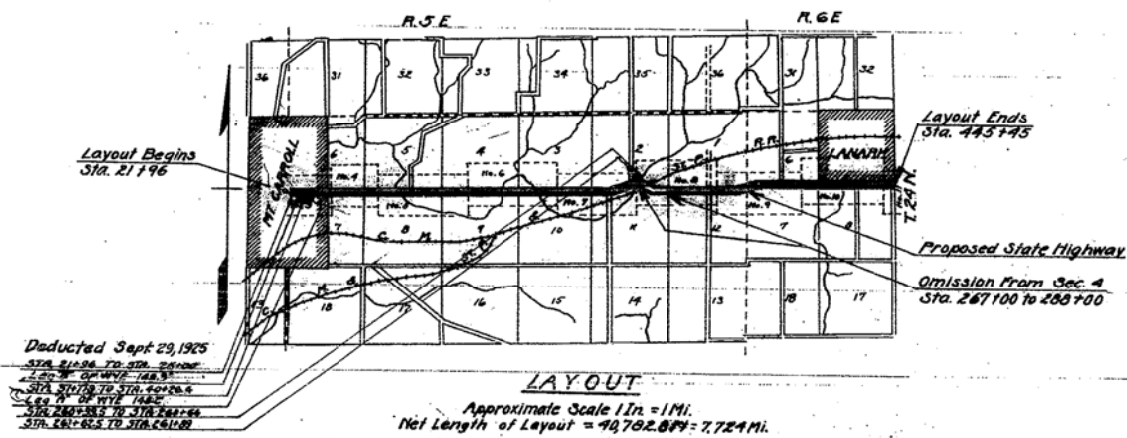
17,973	Cu. Yds. Class A Excavation
200	Cu. Yds. Class B Excavation
200	Cu. Yds. Class C Excavation
61	Rods. Headed Pulling
61,369	Sq. Yds. Pavement
1,720	Ln. Ft. Wood Guard Rail
193	Each Setting Right of Way Markers
428.0	Cu. Yds. Class A Concrete
3710	Lbs. Reinforcing Steel

SUMMARY of CONCRETE

Standard Culvert Design No.	Class A	Class A
610-7	8.5	Cu. Yds.
620-1-1	7.5	" "
620-1-3	7.6	" "
620-1-5	2.2	" "
619-16	2.2	" "
Total		43.0 cu yds.

ROUTE 27 SECTION 4 CARROLL COUNTY

From a point near the N.W. Corner of Sec. 7, T.24 N. R.5 E. of the 4th P.M. to a point near the N.E. Corner of Sec. 6 T.24 N. R.6 E. of the 4th P.M.



SUMMARY

Station to Station	Gross Length Along Transit Line	Corrections For Curves	Corrections for Relocations		Net Length Along Final Center Line	Omissions	Net Length to be Improved in Feet	Pavement Over Bridges		Sq. Yds. of Pavement
			Sta.	Sta.				Sta.	Feet	
21196	33100	78			1108.0		1108.0			2208.0
37120	40100	18			298.0		298.0			497.0
40100	440100	190.3			190.3		190.3			280.0
33100	38100	50.0	36170.5	4.4	49.5		49.5			79.2
38100	40100	20.0	39190.5	0.5	19.5		19.5			29.2
40100	440100	190.3			190.3		190.3			280.0
33100	38100	50.0	36170.5	4.4	49.5		49.5			79.2
38100	40100	20.0	39190.5	0.5	19.5		19.5			29.2
40100	440100	190.3			190.3		190.3			280.0
33100	38100	50.0	36170.5	4.4	49.5		49.5			79.2
38100	40100	20.0	39190.5	0.5	19.5		19.5			29.2
40100	440100	190.3			190.3		190.3			280.0
33100	38100	50.0	36170.5	4.4	49.5		49.5			79.2
38100	40100	20.0	39190.5	0.5	19.5		19.5			29.2
40100	440100	190.3			190.3		190.3			280.0
33100	38100	50.0	36170.5	4.4	49.5		49.5			79.2
38100	40100	20.0	39190.5	0.5	19.5		19.5			29.2
40100	440100	190.3			190.3		190.3			280.0
33100	38100	50.0	36170.5	4.4	49.5		49.5			79.2
38100	40100	20.0	39190.5	0.5	19.5		19.5			29.2
40100	440100	190.3			190.3		190.3			280.0
33100	38100	50.0	36170.5	4.4	49.5		49.5			79.2
38100	40100	20.0	39190.5	0.5	19.5		19.5			29.2
40100	440100	190.3			190.3		190.3			280.0
33100	38100	50.0	36170.5	4.4	49.5		49.5			79.2
38100	40100	20.0	39190.5	0.5	19.5		19.5			29.2
40100	440100	190.3			190.3		190.3			280.0
33100	38100	50.0	36170.5	4.4	49.5		49.5			79.2
38100	40100	20.0	39190.5	0.5	19.5		19.5			29.2
40100	440100	190.3			190.3		190.3			280.0
33100	38100	50.0	36170.5	4.4	49.5		49.5			79.2
38100	40100	20.0	39190.5	0.5	19.5		19.5			29.2
40100	440100	190.3			190.3		190.3			280.0
33100	38100	50.0	36170.5	4.4	49.5		49.5			79.2
38100	40100	20.0	39190.5	0.5	19.5		19.5			29.2
40100	440100	190.3			190.3		190.3			280.0
33100	38100	50.0	36170.5	4.4	49.5		49.5			79.2
38100	40100	20.0	39190.5	0.5	19.5		19.5			29.2
40100	440100	190.3			190.3		190.3			280.0
33100	38100	50.0	36170.5	4.4	49.5		49.5			79.2
38100	40100	20.0	39190.5	0.5	19.5		19.5			29.2
40100	440100	190.3			190.3		190.3			280.0
33100	38100	50.0	36170.5	4.4	49.5		49.5			79.2
38100	40100	20.0	39190.5	0.5	19.5		19.5			29.2
40100	440100	190.3			190.3		190.3			280.0
33100	38100	50.0	36170.5	4.4	49.5		49.5			79.2
38100	40100	20.0	39190.5	0.5	19.5		19.5			29.2
40100	440100	190.3			190.3		190.3			280.0
33100	38100	50.0	36170.5	4.4	49.5		49.5			79.2
38100	40100	20.0	39190.5	0.5	19.5		19.5			29.2
40100	440100	190.3			190.3		190.3			280.0
33100	38100	50.0	36170.5	4.4	49.5		49.5			79.2
38100	40100	20.0	39190.5	0.5	19.5		19.5			29.2
40100	440100	190.3			190.3		190.3			280.0
33100	38100	50.0	36170.5	4.4	49.5		49.5			79.2
38100	40100	20.0	39190.5	0.5	19.5		19.5			29.2
40100	440100	190.3			190.3		190.3			280.0
33100	38100	50.0	36170.5	4.4	49.5		49.5			79.2
38100	40100	20.0	39190.5	0.5	19.5		19.5			29.2
40100	440100	190.3			190.3		190.3			280.0
33100	38100	50.0	36170.5	4.4	49.5		49.5			79.2
38100	40100	20.0	39190.5	0.5	19.5		19.5			29.2
40100	440100	190.3			190.3		190.3			280.0
33100	38100	50.0	36170.5	4.4	49.5		49.5			79.2
38100	40100	20.0	39190.5	0.5	19.5		19.5			29.2
40100	440100	190.3			190.3		190.3			280.0
33100	38100	50.0	36170.5	4.4	49.5		49.5			79.2
38100	40100	20.0	39190.5	0.5	19.5		19.5			29.2
40100	440100	190.3			190.3		190.3			280.0
33100	38100	50.0	36170.5	4.4	49.5		49.5			79.2
38100	40100	20.0	39190.5	0.5	19.5		19.5			29.2
40100	440100	190.3			190.3		190.3			280.0
33100	38100	50.0	36170.5	4.4	49.5		49.5			79.2
38100	40100	20.0	39190.5	0.5	19.5		19.5			29.2
40100	440100	190.3			190.3		190.3			280.0
33100	38100	50.0	36170.5	4.4	49.5		49.5			79.2
38100	40100	20.0	39190.5	0.5	19.5		19.5			29.2
40100	440100	190.3			190.3		190.3			280.0
33100	38100	50.0	36170.5	4.4	49.5		49.5			79.2
38100	40100	20.0	39190.5	0.5	19.5		19.5			29.2
40100	440100	190.3			190.3		190.3			280.0
33100	38100	50.0	36170.5	4.4	49.5		49.5			79.2
38100	40100	20.0	39190.5	0.5	19.5		19.5			29.2
40100	440100	190.3			190.3		190.3			280.0
33100	38100	50.0	36170.5	4.4	49.5		49.5			79.2
38100	40100	20.0	39190.5	0.5	19.5		19.5			29.2
40100	440100	190.3			190.3		190.3			280.0
33100	38100	50.0	36170.5	4.4	49.5		49.5			79.2
38100	40100	20.0	39190.5	0.5	19.5		19.5			29.2
40100	440100	190.3			190.3		190.3			280.0
33100	38100	50.0	36170.5	4.4	49.5		49.5			79.2
38100	40100	20.0	39190.5	0.5	19.5		19.5			29.2
40100	440100	190.3			190.3		190.3			280.0
33100	38100	50.0	36170.5	4.4	49.5		49.5			79.2
38100	40100	20.0	39190.5	0.5	19.5		19.5			29.2
40100	440100	190.3			190.3		190.3			280.0
33100	38100	50.0	36170.5	4.4	49.5		49.5			79.2
38100	40100	20.0	39190.5	0.5	19.5		19.5			29.2
40100	440100	190.3			190.3		190.3			280.0
33100	38100	50.0	36170.5	4.4	49.5		49.5			79.2
38100	40100	20.0	39190.5	0.5	19.5		19.5			29.2
40100	440100	190.3			190.3		190.3			280.0
33100	38100	50.0	36170.5	4.4	49.5		49.5			79.2
38100	40100	20.0	39190.5	0.5	19.5		19.5			29.2
40100	440100	190.3			190.3		190.3			280.0
33100	38100	50.0	36170.5	4.4	49.5		49.5			79.2
38100	40100	20.0	39190.5	0.5	19.5		19.5			29.2
40100	440100	190.3			190.3		190.3			280.0
33100	38100	50.0	36170.5	4.4	49.5		49.5			79.2
38100	40100	20.0	39190.5	0.5	19.5		19.5			29.2
40100	440100	190.3			190.3		190.3			280.0
33100	38100	50.0	36170.5	4.4	49.5		49.5			79.2
38100	40100	20.0	39190.5	0.5	19.5		19.5			29.2
40100	440100	190.3			190.3		190.3			280.0
33100	38100	50.0	36170.5	4.4	49.5		49.5			79.2
38100	40100	20.0	39190.5	0.5						