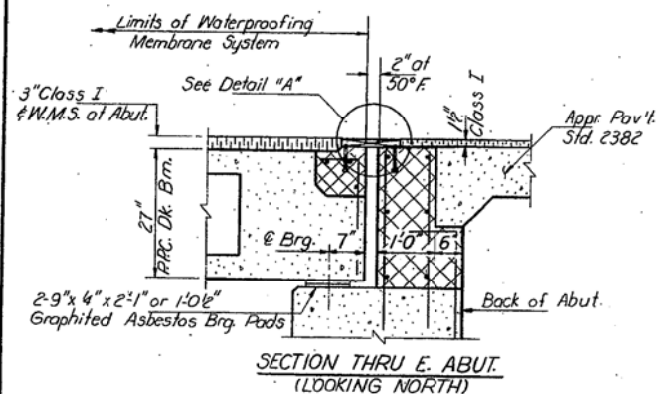
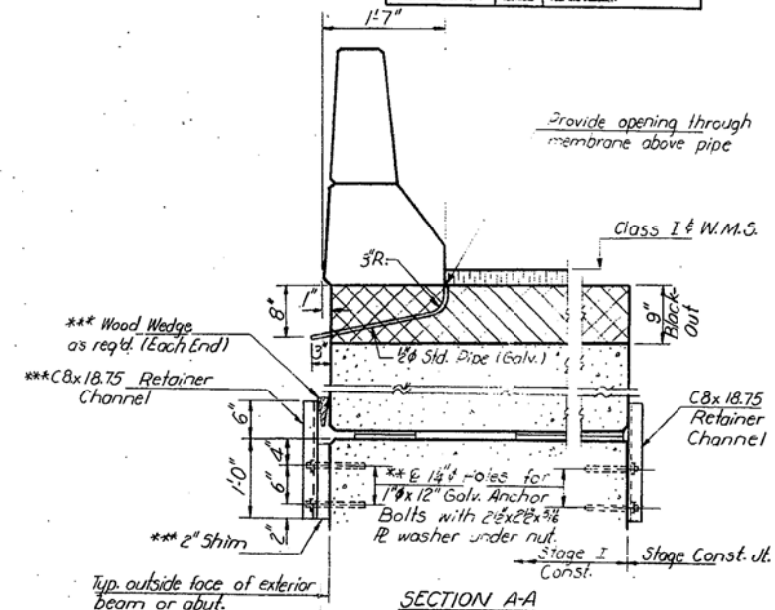
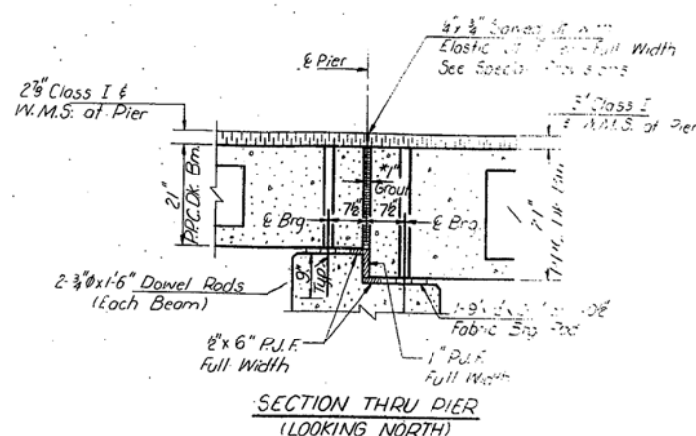
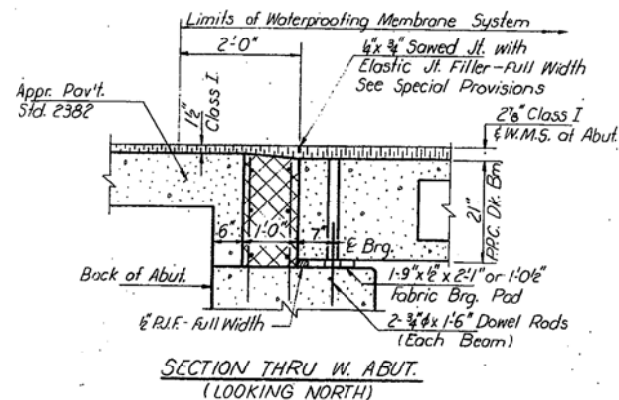
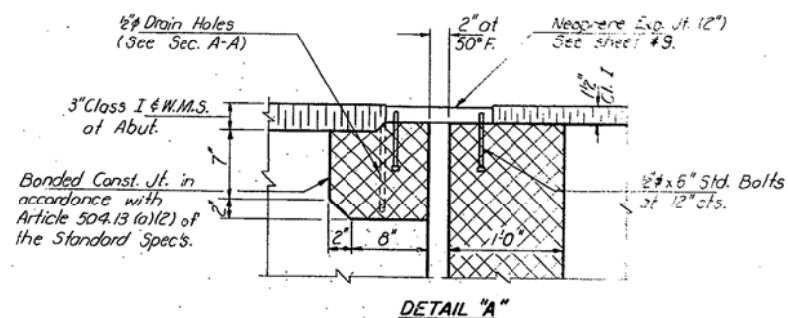


STATE OF ILLINOIS  
DEPARTMENT OF TRANSPORTATION

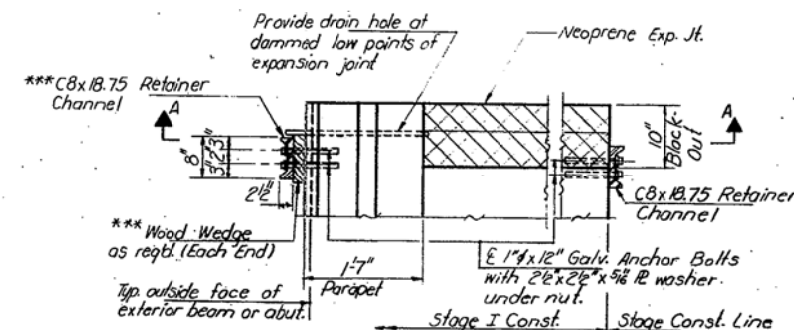
ROUTE NO.	SECTION	COUNTY	SHEET NO.	SHEET NO.
F.A. 17	4BR-1	Carroll	22	18
SHEET NO. 8				
12 SHEETS				



\*1" Joint shall be packed with a mix of 2:1 sand and P.C. mortar. This mortar may vary plus or minus to accommodate tolerance in beam lengths.

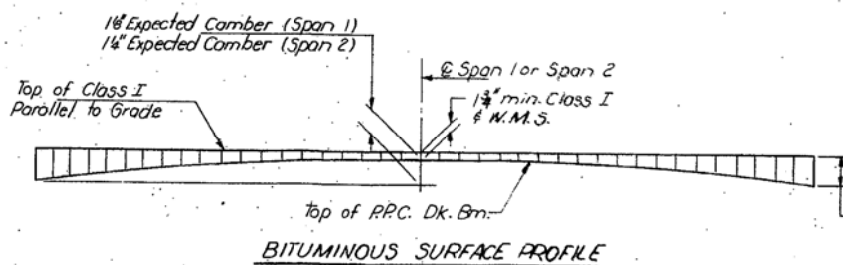
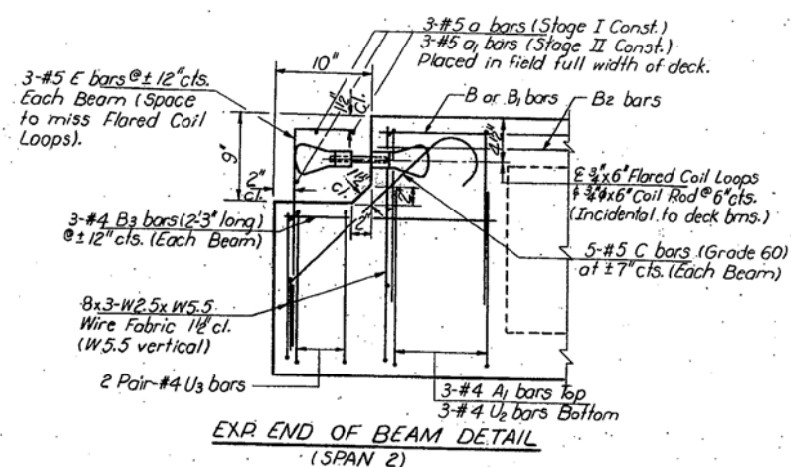


NOTES: Dimensions are at right angles. Cross hatched areas to be poured after beams have been erected and joints grouted. Ends of beams shall be aligned at the expansion joint. Any lineal variation in the beam lengths shall be placed at the fixed joint. See End of Beam Detail for reinforcement.



\*\*\* Use for Stage I & Stage II Construction.

Note: After block-outs are poured and cured, the Retainer Channels shall be removed. Anchor bolts may be left in place. Cost for removal of channels shall be incidental.



SUPERSTRUCTURE DETAILS  
F.A. 17 SEC. 4BR-1  
CARROLL COUNTY  
STA. 174+45.62

DESIGNED M. Bloxdorf  
CHECKED JIM KOHOUT  
DRAWN R. Doty  
CHECKED J.K.

March 4, 1993