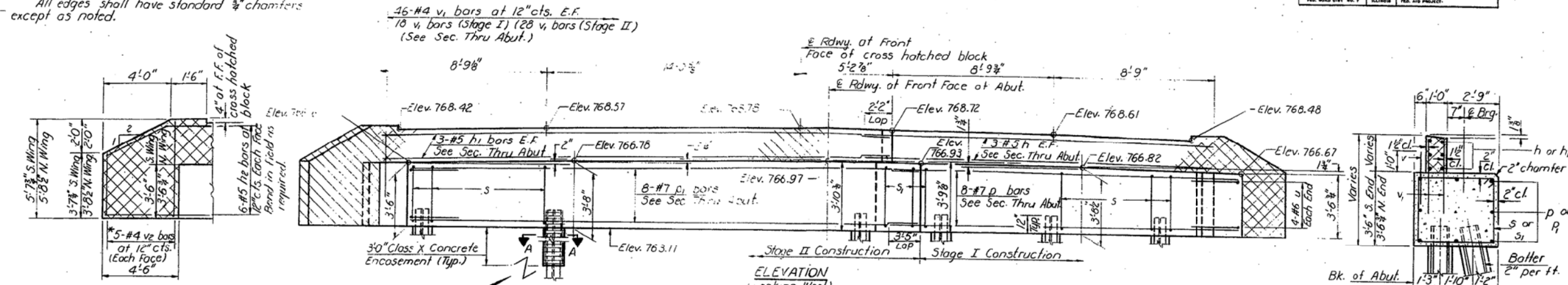


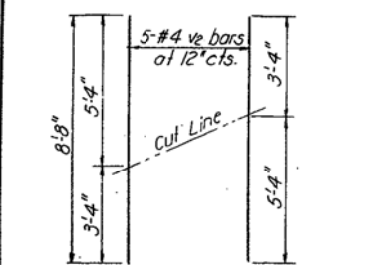
STATE OF ILLINOIS
DEPARTMENT OF TRANSPORTATION

| | | | | |
|-----------|---------|--------|--------------|-----------|
| ROUTE NO. | SECTION | COUNTY | TOTAL SHEETS | SHEET NO. |
| 4BR-1 | Carroll | 22 | 20 | 12 SHEETS |

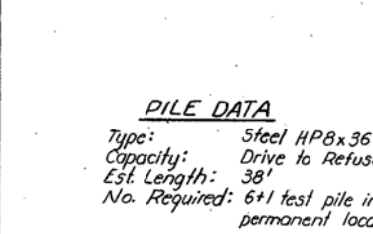
Notes:
Cross hatched area to be poured after superstructure is in place. Quantity of Class X Concrete included with superstructure.
All edges shall have standard 3/8" chamfers except as noted.



FIELD CUTTING DIAGRAM
*Order v₂ bars full length. Cut to fit as shown and use remainder of bars in opposite face.



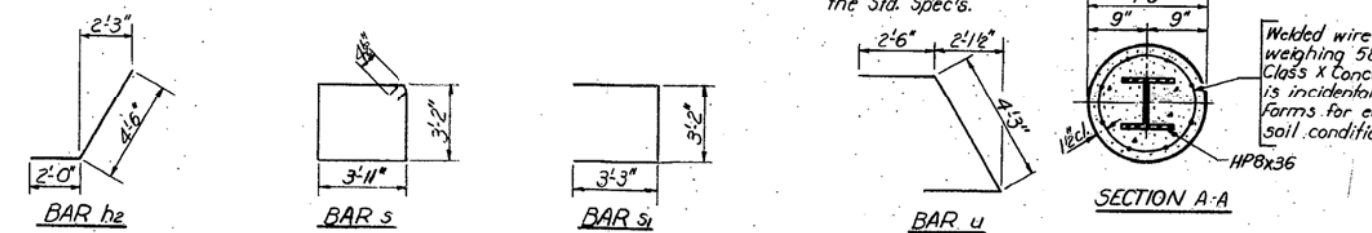
PILE DATA
Type: Steel HPBx36
Capacity: Drive to Refusal
Est. Length: 38'
No. Required: 6+1 test pile in a permanent location.



BILL OF MATERIAL

| Bar | No. | Size | Length | Shape |
|------------------------|-----|----------|--------|-------|
| h | 6 | #5 | 19.8" | — |
| h ₁ | 6 | #5 | 27.10" | — |
| h ₂ | 24 | #4 | 6.6" | J |
| p | 8 | #7 | 20.11" | — |
| p ₁ | 8 | #7 | 27.10" | — |
| s | 36 | #4 | 14.11" | □ |
| s ₁ | 20 | #4 | 9.8" | □ |
| u | 8 | #6 | 9.3" | J |
| v | 45 | #5 | 2.0" | — |
| v ₁ | 92 | #4 | 3.6" | — |
| v ₂ | 10 | #4 | 8.9" | — |
| Class X Concrete | | Cu. Yd. | 26.3 | |
| Reinforcement Bars | | Pound | 2160 | |
| Steel Piles HPBx36 | | Lin. Ft. | 228 | |
| Test Pile Steel HPBx36 | | Each | 1 | |

DESIGNED M. Bloxdorf
CHECKED JIM KOHOUT
DRAWN R. Doly
CHECKED J.K.



Welded wire fabric 6x6-W4.0xW4.0 weighing 58#/100 Sq. ft. The cost of Class X Concrete Encasement and Reinforcement is incidental to the cost of furnishing piles. Forms for encasement may be omitted when soil conditions will permit.

WEST ABUTMENT
FA. RT. 17, SEC. 4BR-1
CARROLL COUNTY
STA. 174+45.62