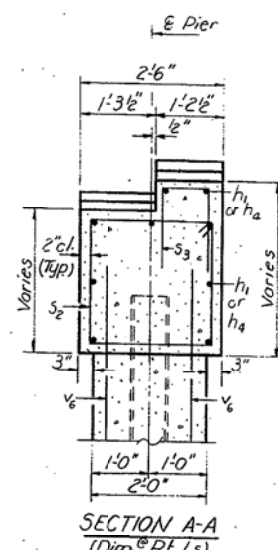
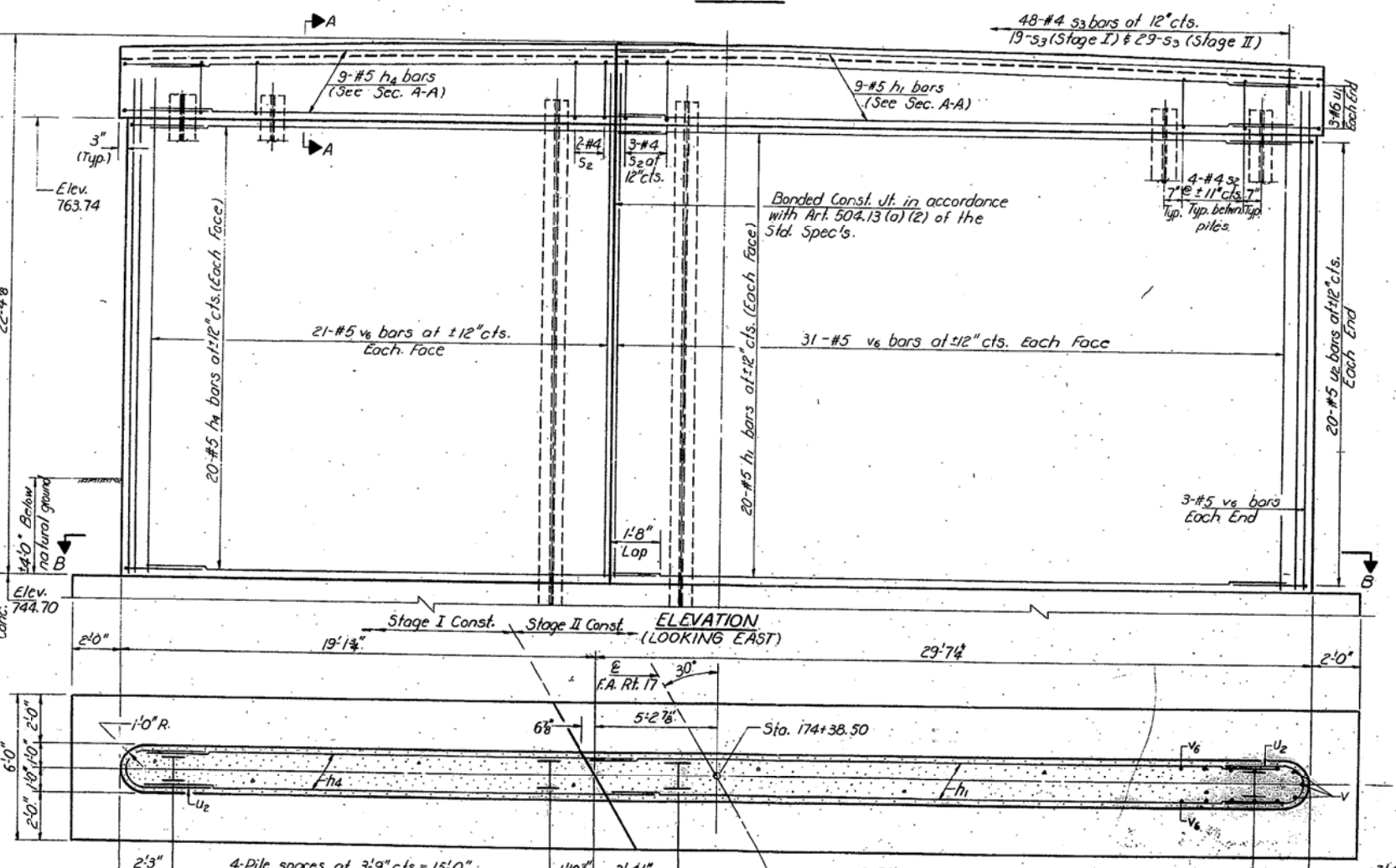
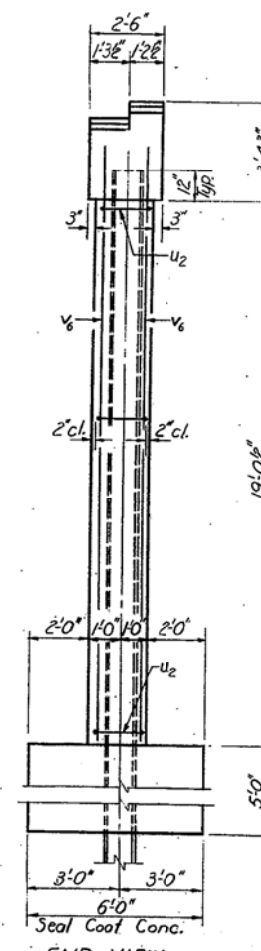
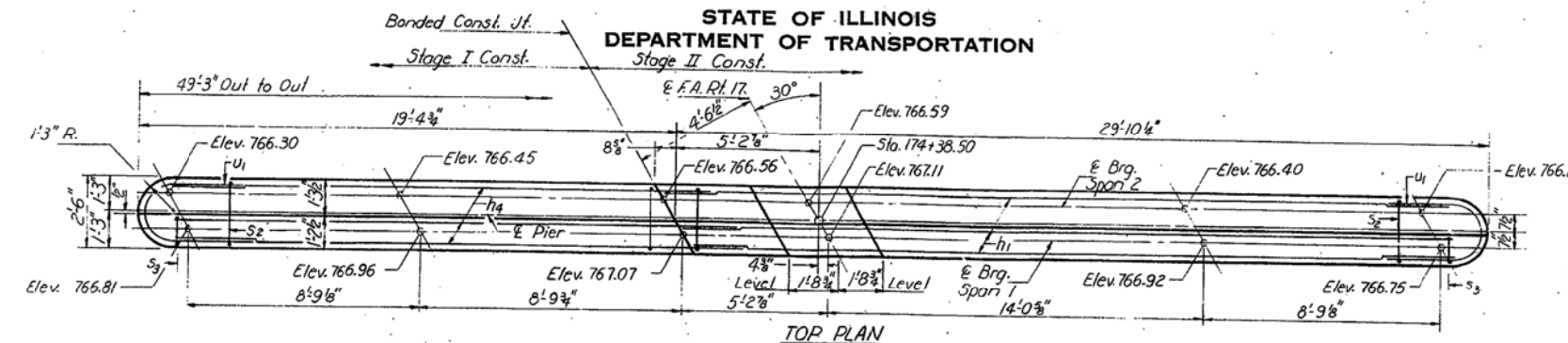


STATE OF ILLINOIS
DEPARTMENT OF TRANSPORTATION

ROUTE NO.	SECTION	COUNTY	TOTAL SHEETS	SHEET NO.	SHEET NO. 12
A.A. 17	4BR-1	Carroll	22	22	12 SHEETS

PILE DATA
 Type: Steel HP 8x36
 Capacity: Drive to Refusal
 Est. Length: 36'
 No. Required: 12



BILL OF MATERIAL

Bar	No.	Size	Length	Shape
h1	29	#5	27'10"	—
h4	29	#5	19'3"	—
s2	45	#4	9'7"	□
s3	48	#4	4'5"	□
u1	6	#6	9'11"	—
u2	40	#5	5'3"	—
v6	58	#5	20'6"	—
Class X Concrete		Cu. Yd.	81.4	
Reinforcement Bars		Pound	3570	
Cofferdams		Each	1	
Seal Coat Concrete		Cu. Yd.	58.6	
Steel Piles (HP8x36)		Lin. Ft.	432	

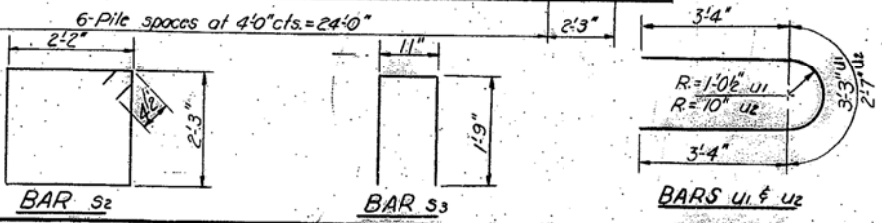
Note:
The quantity of Seal Coat Concrete is based upon a design water elevation of 762.0.

DESIGNED M. Bloxdorf
 CHECKED Jim Kohout
 DRAWN R. Doty
 CHECKED J.K.

March 4, 2003
 James Thompson
 PROJECT ENGINEER
 APPROVED
 REGISTERED PROFESSIONAL ENGINEER

Note:
All edges shall have standard 3/8" chamfers.

SECTION B-B



PIER
 F.A. RT. 17 SEC. 4BR-1
 CARROLL COUNTY
 STA. 174+45.62