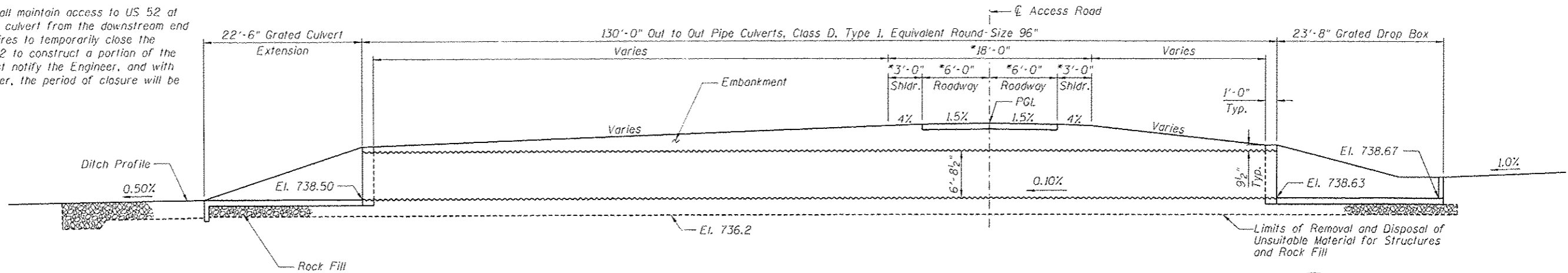


Bench Mark: Disk in handrail at Sta. 673+78.70, 19.74' LT, Elev. 751.66

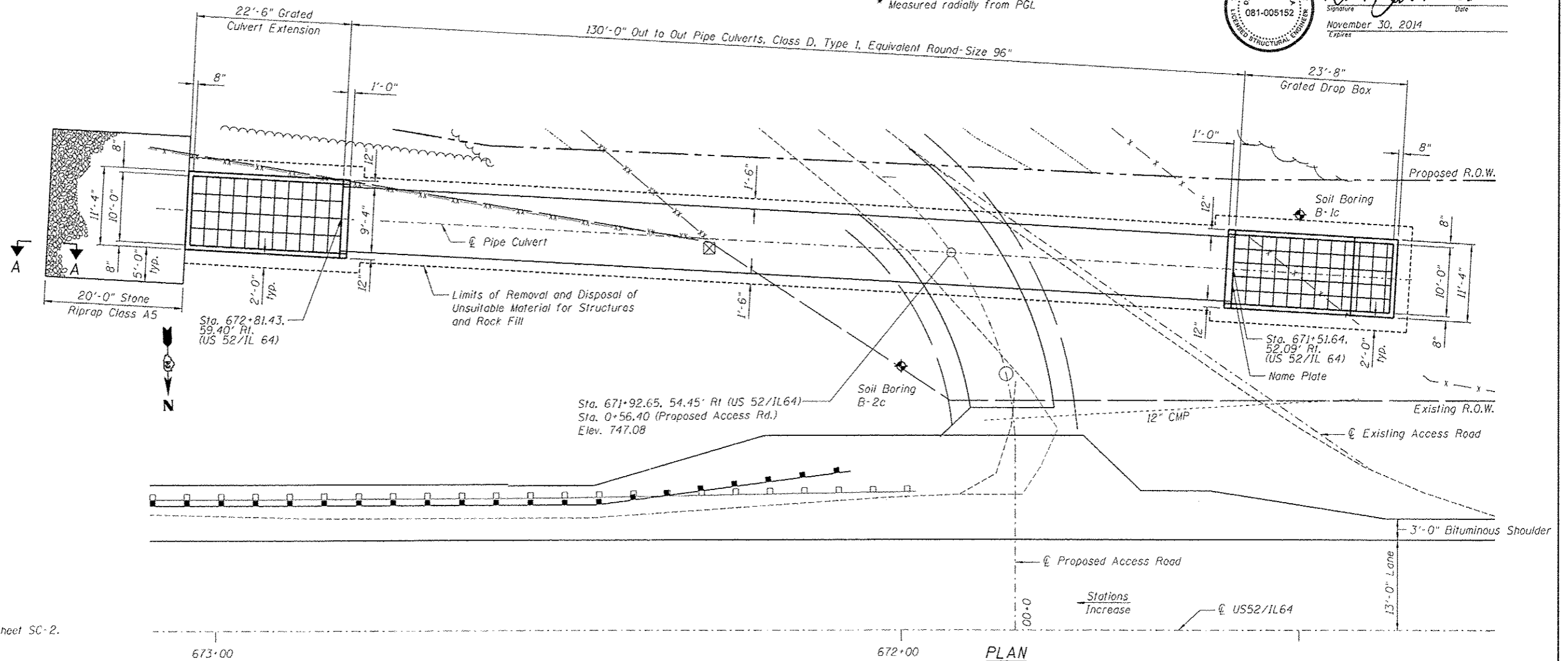
Existing Structure: S.N. 008-1022 was built in approximately 1926. The structure is a 7'x4' single barrel concrete culvert 37' long. It is located approximately 192' west of the proposed culvert.

Staging: The Contractor shall maintain access to US 52 at all times and construct the culvert from the downstream end up. If the Contractor requires to temporarily close the entrance's access to US 52 to construct a portion of the culvert, the Contractor must notify the Engineer, and with the approval of the Engineer, the period of closure will be limited to 4 hours.

No Salvage.



Signature: *Deborah A. Spick* 6-27-13
Date: November 30, 2014
Expires



For Section A-A, see Sheet SC-2.



USER NAME: SAW	DESIGNED: JLA	REVISED:
FLDT SCALE: 012-0000 1/2" = 1'-0"	CHECKED: DAZ	REVISED:
FLDT DATE: 6/27/2013	DRAWN: SAW	REVISED:
	CHECKED: JLA	REVISED:

STATE OF ILLINOIS
DEPARTMENT OF TRANSPORTATION

GENERAL PLAN & ELEVATION
S.N. 008-1106

SHEET NO. SC-1 OF SC-7 SHEETS

F.A.P. RTE.	SECTION	COUNTY	TOTAL SHEETS	SHEET NO.
17	(48R-210)	CARROLL	150	88
CONTRACT NO. 64D83			ILLINOIS FED. AID PROJECT	