

F.A.P. RTE.	SECTION	COUNTY	TOTAL SHEETS	SHEET NO.
306	106M-3	JODAVIESS	12	1
		ILLINOIS	CONTRACT NO. 64H82	

STATE OF ILLINOIS
DEPARTMENT OF TRANSPORTATION
DIVISION OF HIGHWAYS

**PROPOSED
HIGHWAY PLANS**

FAP ROUTE 306 (IL 35)
SECTION 106M-3

**STORM SEWER REPLACEMENT
JODAVIESS COUNTY**

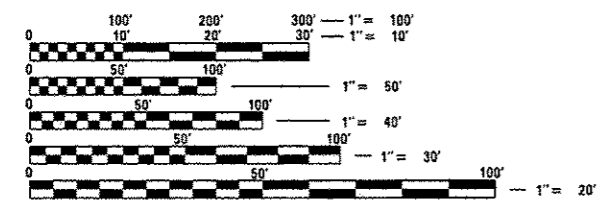
C-92-095-12

D92-057-12



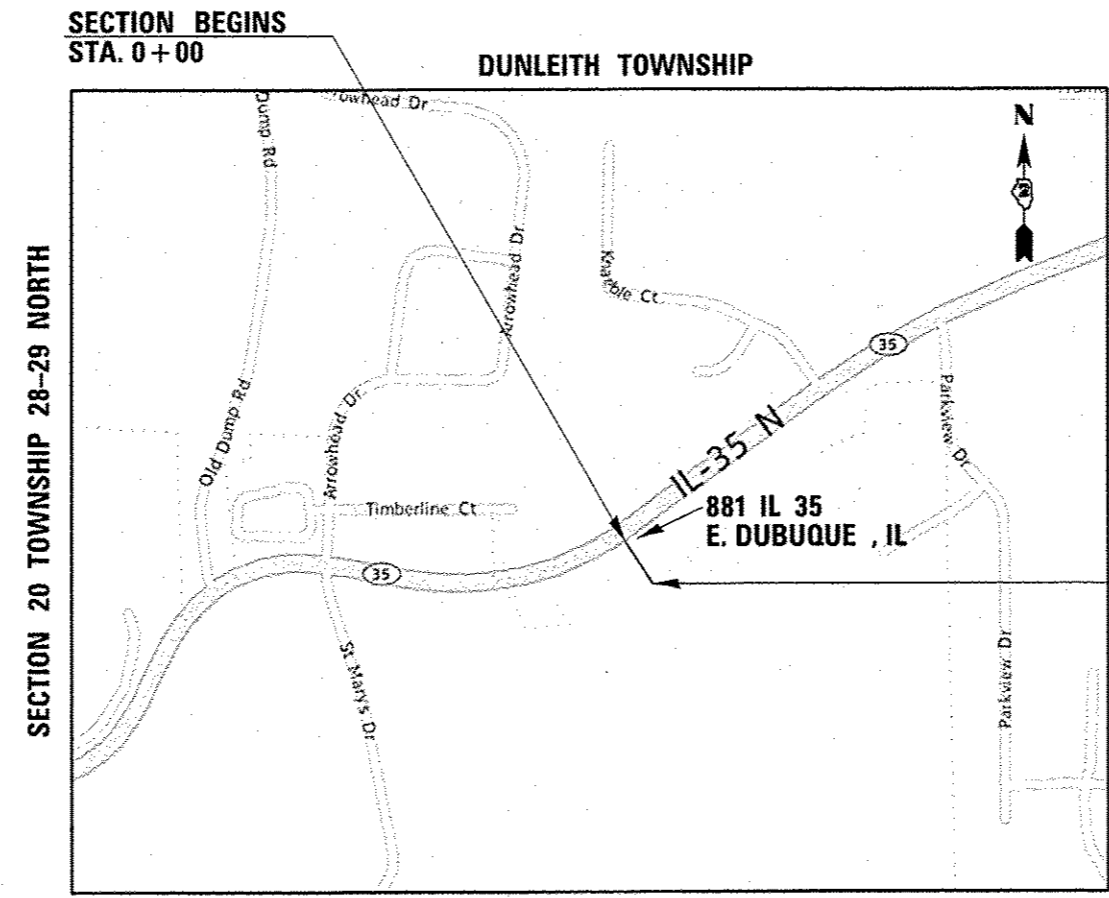
FOR INDEX OF SHEETS, SEE SHEET NO. 2

DUNLEITH TOWNSHIP, SECTION 20



FULL SIZE PLANS HAVE BEEN PREPARED USING STANDARD ENGINEERING SCALES. REDUCED SIZED PLANS WILL NOT CONFORM TO STANDARD SCALES. IN MAKING MEASUREMENTS ON REDUCED PLANS, THE ABOVE SCALES MAY BE USED.

J.U.L.I.E.
JOINT UTILITY LOCATION INFORMATION FOR EXCAVATION
1-800-892-0123
OR 811



SECTION 20 TOWNSHIP 28-29 NORTH

RANGE 2 WEST OF THE THIRD PRINCIPAL MERIDIAN

GROSS LENGTH = 250 FT.
NET LENGTH = 250 FT.

STATE OF ILLINOIS
DEPARTMENT OF TRANSPORTATION
DIVISION OF HIGHWAYS

SUBMITTED JUNE 21 2013
Paul A. Korte
DEPUTY DIRECTOR OF HIGHWAYS, REGION ENGINEER

Aug 16 2013
John D. Baranelli, P.E.
ENGINEER OF DESIGN AND ENVIRONMENT

Aug 16 2013
Osman
DIRECTOR OF HIGHWAYS, CHIEF ENGINEER

**PRINTED BY THE AUTHORITY
OF THE STATE OF ILLINOIS**

PROJECT ENGINEER: Masood Ahmad
PROJECT MANAGER: Sam Abdullah 1-815-284-5935

CONTRACT NO. 64H82