

F.A.S. RTE.	SECTION	COUNTY	TOTAL SHEETS	SHEET NO.
338	(35)C	IROQUOIS	10	1
		ILLINOIS	CONTRACT NO. 66C79	

STATE OF ILLINOIS
DEPARTMENT OF TRANSPORTATION
DIVISION OF HIGHWAYS

**PROPOSED
HIGHWAY PLANS**

F.A.S. 338 (US 45)
SECTION (35)C

BOX CULVERT REPAIR
IROQUOIS COUNTY

C-93-049-13

INDEX OF SHEETS

1. COVER SHEET
2. GENERAL NOTES
3. SUMMARY OF QUANTITIES
4. TYPICAL SECTION
5. TRAFFIC CONTROL AND PROTECTION, STANDARD 701321
6. TRAFFIC CONTROL AND PROTECTION, (SPECIAL) FOR ROAD CLOSURE
- 7 - 10. STRUCTURE PLANS

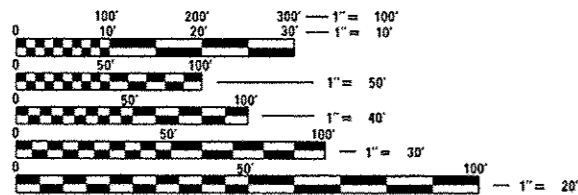
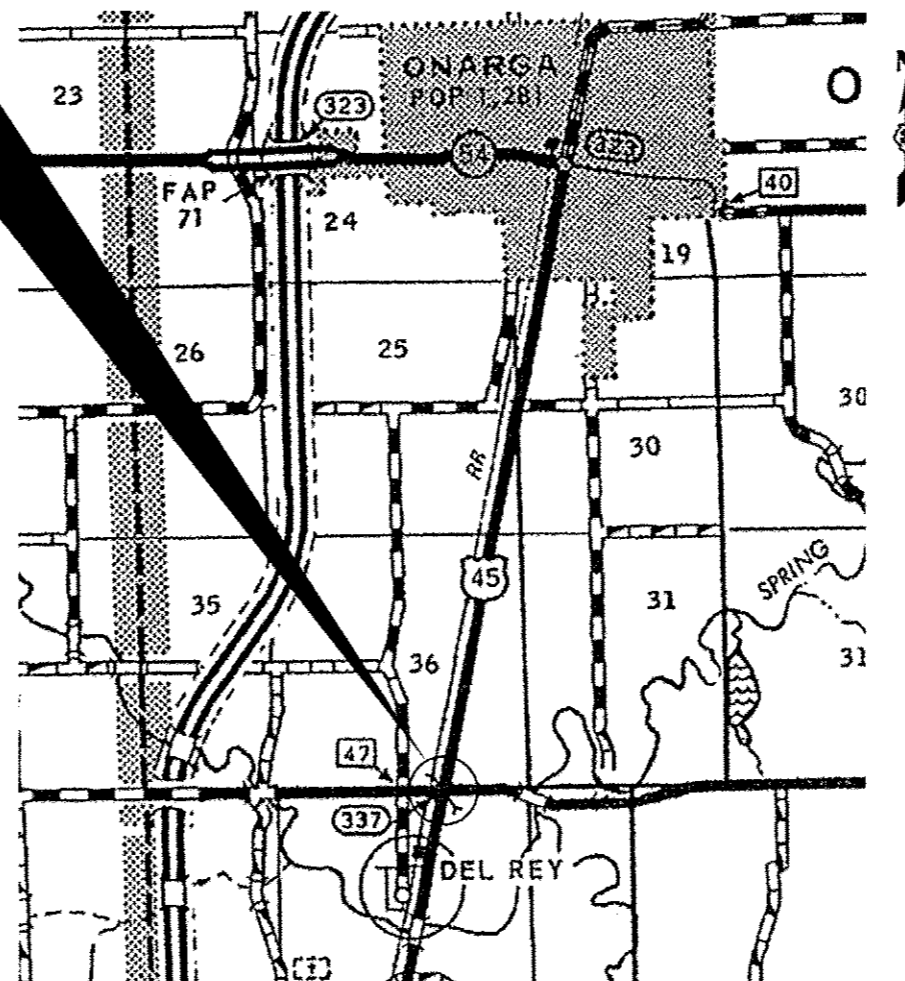
STANDARDS

- 000001-06 STANDARD SYMBOLS, ABBREVIATIONS AND PATTERNS
001001-02 AREAS OF REINFORCEMENT BARS
001006 DECIMAL OF AN INCH AND OF A FOOT
280001-07 TEMPORARY EROSION CONTROL SYSTEMS
635011-02 REFLECTOR MARKER AND MOUNTING DETAILS
701001-02 OFF-ROAD OPERATIONS 2L, 2W, MORE THAN 15' (4.5 m) AWAY
701006-04 OFF-ROAD OPERATIONS 2L, 2W, 15' (4.5 m) TO 24" (600 mm) FROM PAVEMENT EDGE
701201-04 LANE CLOSURE, 2L, 2W, DAY ONLY, FOR SPEEDS \geq 45 MPH
701301-04 LANE CLOSURE, 2L, 2W, SHORT TIME OPERATIONS
701321-13 LANE CLOSURE, 2L, 2W, BRIDGE REPAIR WITH BARRIER
701901-02 TRAFFIC CONTROL DEVICES
704001-07 TEMPORARY CONCRETE BARRIER
BLR 17-4 TRAFFIC CONTROL DEVICES - DAY LABOR CONSTRUCTION
701206-03 LANE CLOSURE, 2L, 2W, NIGHT ONLY FOR SPEEDS \geq 45 MPH



PROJECT LOCATION

STRUCTURE NO. 038-2557
STA. 1695+95
2.53 MILES SOUTH OF IL 54 (ONARGA)



FULL SIZE PLANS HAVE BEEN PREPARED USING STANDARD ENGINEERING SCALES. REDUCED SIZED PLANS WILL NOT CONFORM TO STANDARD SCALES. IN MAKING MEASUREMENTS ON REDUCED PLANS, THE ABOVE SCALES MAY BE USED.

J.U.L.I.E.
JOINT UTILITY LOCATION INFORMATION FOR EXCAVATION
1-800-892-0123
OR 811

PROJECT ENGINEER: JOE KANNEL
UNIT CHIEF: RON WOODSHANK
TOWNSHIP: ONARGA

CONTRACT NO. 66C79

RURAL	
MAJOR COLLECTOR	
F.A.S. 338 (US 45)	
2011	
ADT	900
P.V.	91.11%
S.U.	6.67%
M.U.	2.22%

STATE OF ILLINOIS
DEPARTMENT OF TRANSPORTATION
DIVISION OF HIGHWAYS

SUBMITTED 7-10 2013
Paul A. Cochran
DEPUTY DIRECTOR OF HIGHWAYS, REGION ENGINEER

Aug 16 2013
John D. Baranzelli PE
ENGINEER OF DESIGN AND ENVIRONMENT

Aug 16 2013
Omer Osman PE
DIRECTOR OF HIGHWAYS, CHIEF ENGINEER

PRINTED BY THE AUTHORITY
OF THE STATE OF ILLINOIS