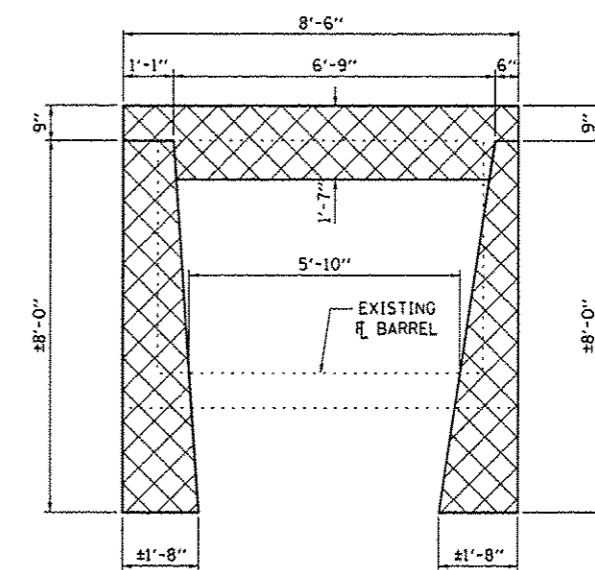
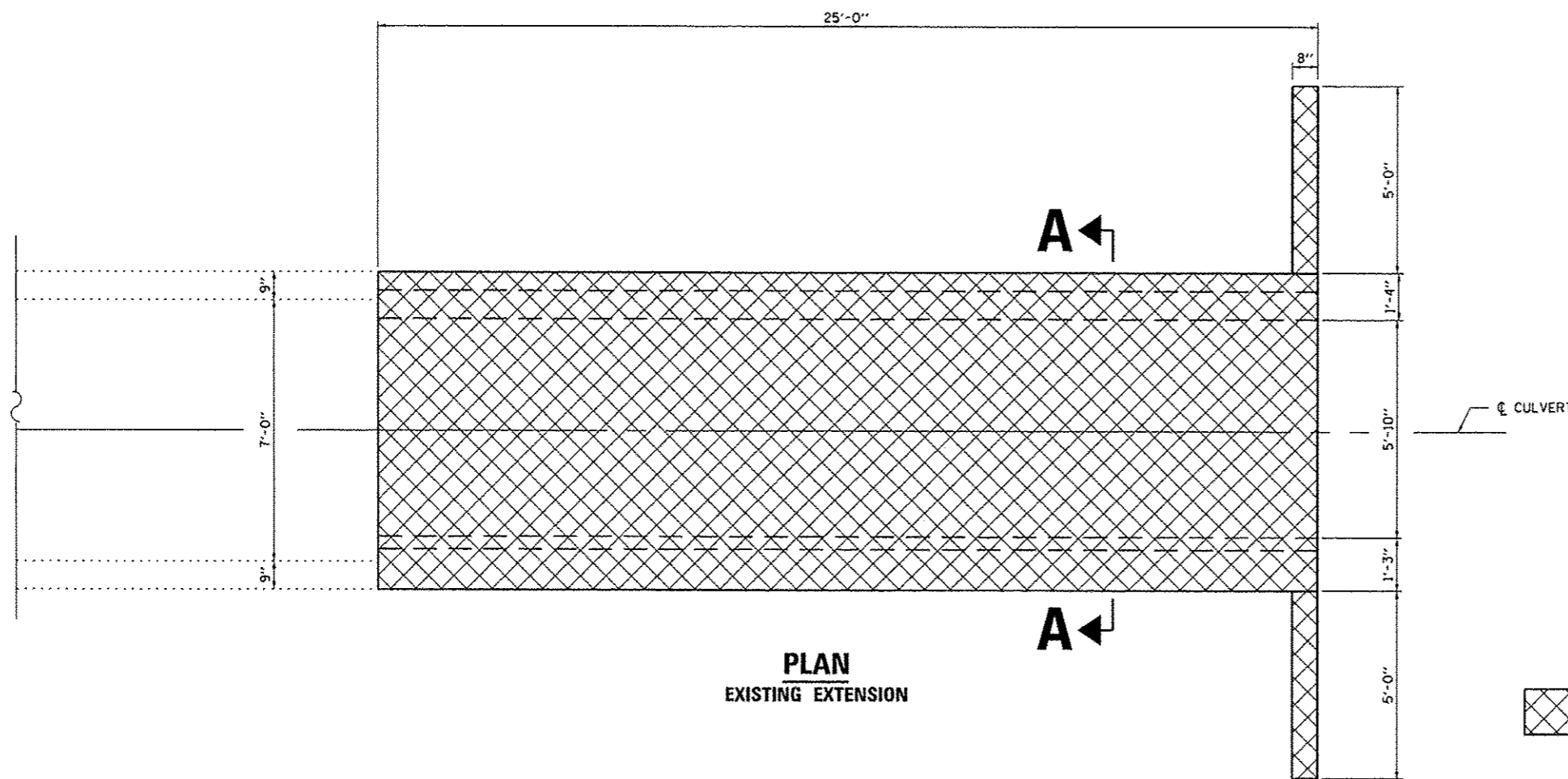


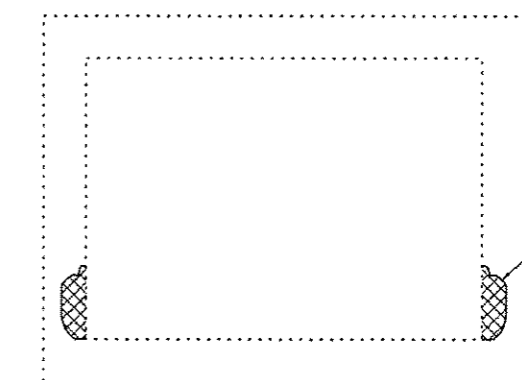
ELEVATION



SECTION A-A



PLAN
EXISTING EXTENSION



VOID IN CONCRETE (TYP.)
VARIOUS LOCATIONS ALONG
BOTTOM OF WALL THROUGH EXISTING
BARREL, APPROXIMATELY 1'x1' IN SIZE.
REPAIR METHOD SHALL BE ACCORDING
TO THE SPECIAL PROVISION FOR
"STRUCTURAL REPAIR OF CONCRETE
(DEPTH EQUAL TO OR LESS THAN 5")

SECTION THRU EXISTING BARREL
LOOKING SOUTH

 **CONCRETE REMOVAL**

FILE NAME :	USER NAME : potalyj	DESIGNED - RW	REVISED -
c:\pwwork\pwwork\potalyj\033242\036679-shr-detailed.dgn		DRAWN - RW	REVISED -
		CHECKED -	REVISED -
		DATE -	REVISED -

STATE OF ILLINOIS
DEPARTMENT OF TRANSPORTATION

EXISTING CULVERT EXTENSIONS DETAILS

SCALE: SHEET 3 OF 4 SHEETS STA. 1695+95

F.A.S. RTE. 338	SECTION (35)C	COUNTY IROQUOIS	TOTAL SHEETS 10	SHEET NO. 9
CONTRACT NO. 66C79				
[ILLINOIS] FED. AID PROJECT				