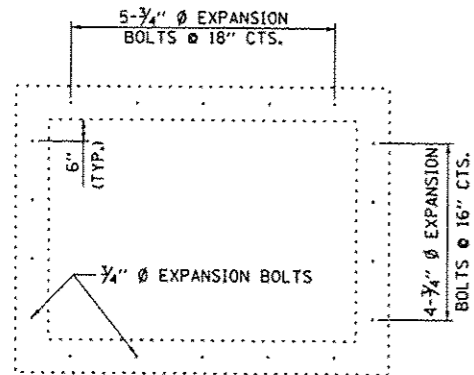
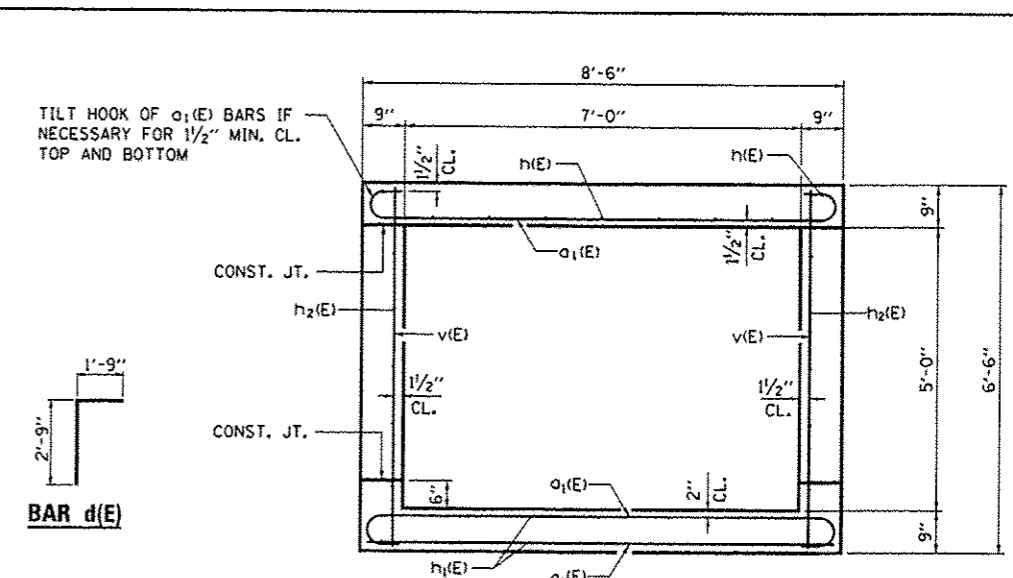


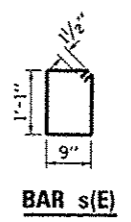
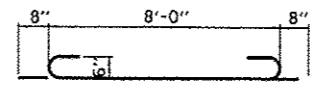
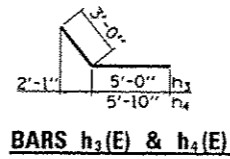
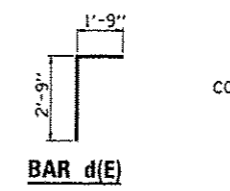
ELEVATION



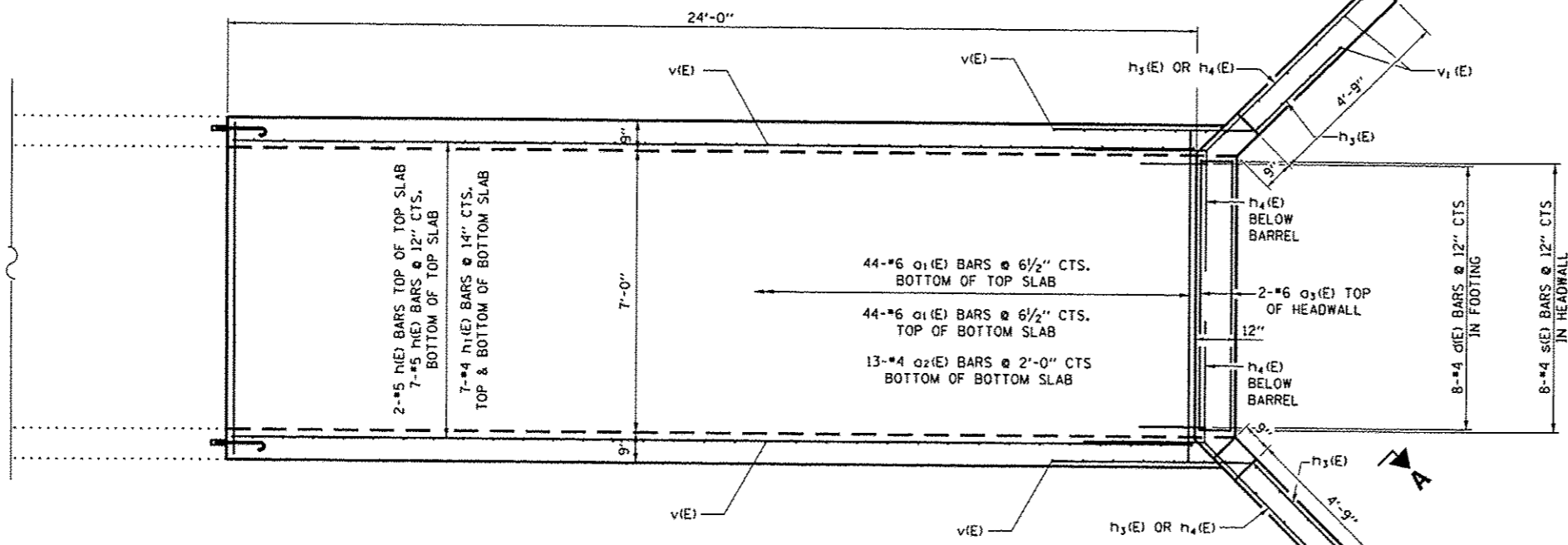
END VIEW OF EXISTING BARREL



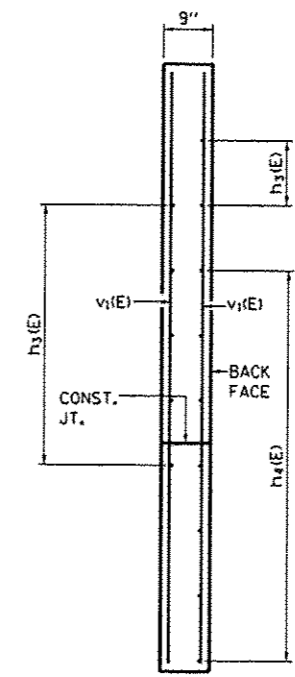
SECTION THRU BARREL



MINIMUM BAR LAP			
BARRELS		WINGWALLS	
SIZE	LAP	SIZE	LAP
#4	1'-4"	#4	1'-8"
#5	1'-8"	#5	2'-2"
#6	2'-0"	#6	2'-7"
#7	2'-9"	#7	3'-5"
#8	3'-8"	#8	4'-6"
#9	4'-7"	#9	5'-9"



PLAN EXTENSION



SECTION A-A

BILL OF MATERIALS

BAR	NO.	SIZE	LENGTH	SHAPE
a1	88	6	9'-4"	
a2	13	4	8'-0"	
a3	2	6	7'-1"	
d	8	4	4'-6"	
h	9	5	24'-6"	
h1	14	4	24'-6"	
h2	10	5	23'-10"	
h3	14	4	8'-0"	
h4	14	4	8'-10"	
s	8	4	4'-2"	
v	80	4	6'-0"	
v1	20	4	9'-1"	
CONCRETE REMOVAL			CU YD	31.1
CONCRETE BOX CULVERT			CU YD	22
REINFORCEMENT BARS			POUNDS	2660
EPOXY COATED				
3/4" DIA. EXPANSION BOLTS			EACH	18
STRUCTURAL REPAIR OF CONCRETE (DEPTH EQUAL TO OR LESS THAN 5")			SO FT	10