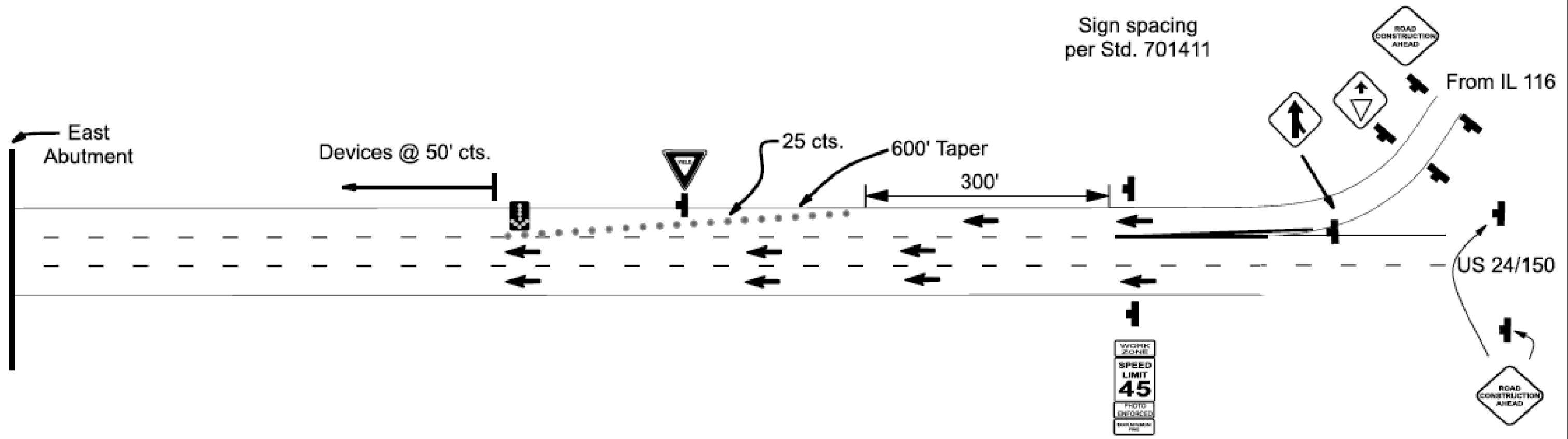


# WB McClugage Traffic Control



## GENERAL NOTES:

- When traffic control runs to west end ramp, one EXIT OPEN sign shall be placed 500' in advance.
- Std. 701456 shall be used for west end ramp in conjunction with the above traffic control.
- Two END WORK ZONE SPEED LIMIT signs shall be placed at the end of the work zone.
- A flagger and sign shall be required .

FILE NAME =	USER NAME = kesthbr	DESIGNED -	REVISED -	<b>STATE OF ILLINOIS DEPARTMENT OF TRANSPORTATION</b>	<b>US 150 WB MCLUGGAGE BRIDGE LUMINAIRE REPLACEMENT TRAFFIC CONTROL AND PROTECTION (SPECIAL) DETAIL</b>	F.A.P. RTE.	SECTION	COUNTY	TOTAL SHEETS	SHEET NO.	
68B52 - High Mast Lighting Maintenance	Final 7-19-13.dgn	DRAWN -	REVISED -			VAR	D4 HIGH MAST REPAIR 2014	VARIOUS	41	41	
	PLOT SCALE = 1/4" = 1'-0"	CHECKED -	REVISED -			CONTRACT NO. 68B52					
	PLOT DATE = 7/19/2013	DATE -	REVISED -			ILLINOIS FED. AID PROJECT					