

RTE.	SECTION	COUNTY	TOTAL SHEETS	SHEET NO.
VAR.	D4 HIGH MAST REPAIR 2014	VARIOUS	41	1
		ILLINOIS	CONTRACT NO. 68B52	

INDEX OF SHEETS

1. COVER SHEET
2. CONSTRUCTION NOTES
- 3.-4. SUMMARY OF QUANTITIES
- 5.-8. HIGH MAST TOWER LOCATION LIST
9. LIGHTING CONTROLLER AND TUNNEL LOCATION LIST
- 10.-28. HIGH MAST TOWER LOCATIONS (PEORIA COUNTY)
- 29.-36. HIGH MAST TOWER LOCATIONS (PEORIA COUNTY)
37. HIGH MAST TOWER LOCATIONS (MARSHALL & WOODFORD COUNTIES)
38. LED REPLACEMENT LOCATIONS
- 39.-40. MCCLUGGAGE BRIDGE LUMINAIRE REPLACEMENT
41. TRAFFIC CONTROL (SPECIAL) DETAIL FOR MCCLUGGAGE BRIDGE

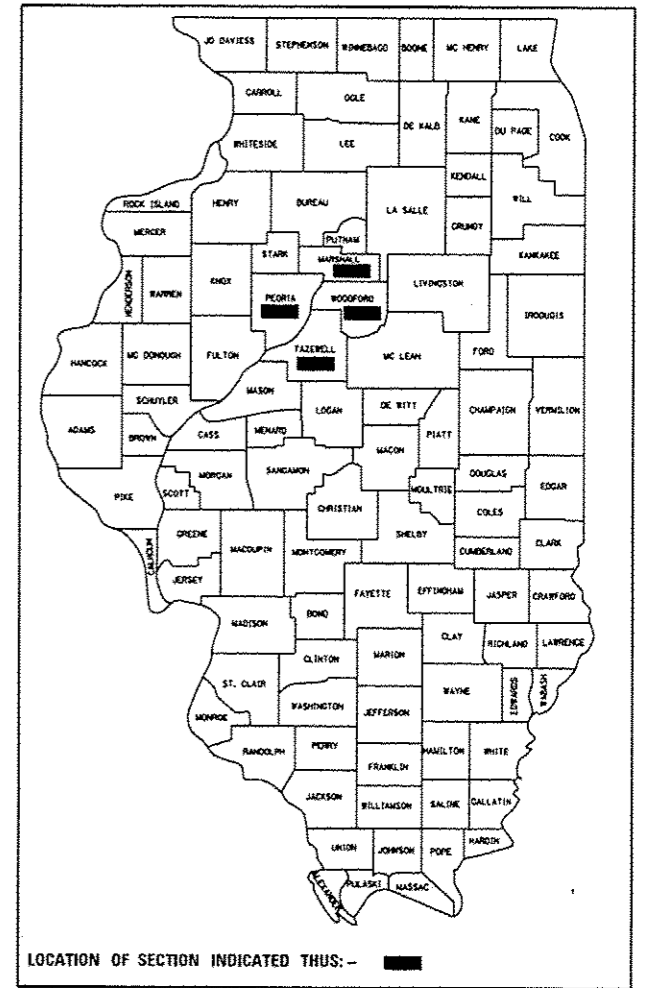
DEPARTMENT OF TRANSPORTATION
DIVISION OF HIGHWAYS

PROPOSED HIGHWAY PLANS

VARIOUS ROUTES
SECTION D4 HIGH MAST REPAIR 2014
VARIOUS COUNTIES

C-94-059-13

D-94-034-13

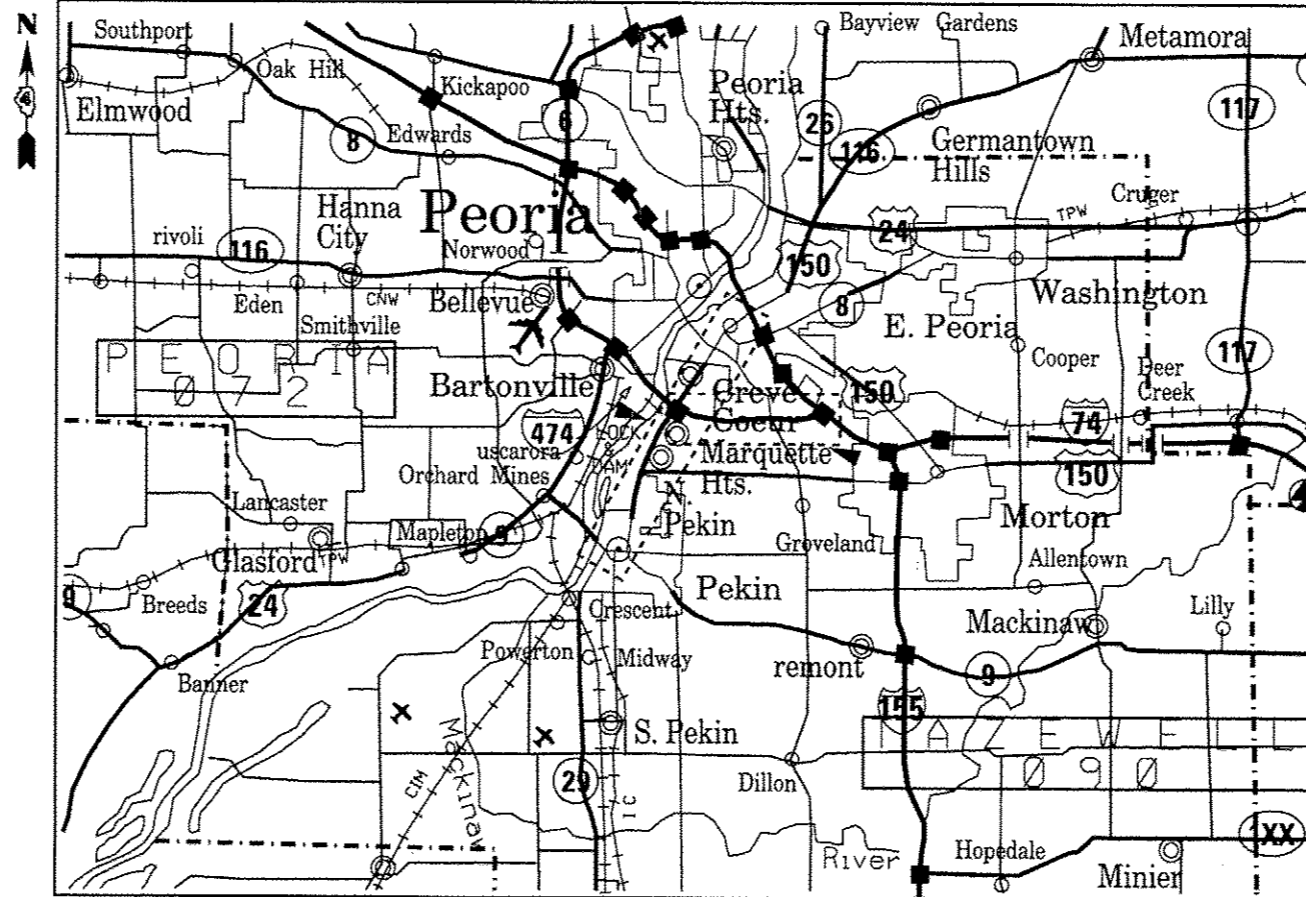


HIGHWAY STANDARDS

- 701001-02
- 701006-04
- 701101-03
- 701106-02
- 701406-06
- 701426-05
- 701456-02
- 701601-08
- 701701-08
- 701901-02

PROJECT DESCRIPTION

INSPECTION OF EXISTING HIGH MAST LIGHT TOWERS; LUMINAIRE REPAIR AND RE-LAMPING; MAINTENANCE OF EXISTING LIGHTING CONTROLLERS; LED REPLACEMENT; AND LUMINAIRE REPLACEMENT IN PEORIA, TAZEWELL, AND WOODFORD AND MARSHALL COUNTIES



J.U.L.I.E.
JOINT UTILITY LOCATION INFORMATION FOR EXCAVATION
1-800-892-0123
OR 811

PROJECT ENGINEER: ERIC HOWALD (309) 671-4481
PROJECT MANAGER: RANDY LANINGA (309) 671-4477
CATALOG NO. 34943-00D
CONTRACT NO. 68B52

STATE OF ILLINOIS
DEPARTMENT OF TRANSPORTATION
DIVISION OF HIGHWAYS

SUBMITTED 7/19/13

[Signature]
DEPUTY DIRECTOR OF HIGHWAYS, REGION ENGINEER

Aug 16 2013
John D. Baranecchi, P.E.
ENGINEER OF DESIGN AND ENVIRONMENT

Aug 16 2013
Omer Osman, P.E.
DIRECTOR OF HIGHWAYS, CHIEF ENGINEER

PRINTED BY THE AUTHORITY
OF THE STATE OF ILLINOIS

CONSTRUCTION NOTES

1. ANY MAINTENANCE OF EXISTING LIGHTING AND TRAFFIC SIGNALS WILL BE CONSIDERED EXTRA WORK IN ACCORDANCE WITH ARTICLE 109.04 OF THE STANDARD SPECIFICATIONS.
2. THE LOCATION OF ALL UTILITIES AND PRIVATELY OWNED FACILITIES SHALL BE FIELD VERIFIED BY THE CONTRACTOR PRIOR TO THE INSTALLATION OF ANY COMPONENTS.
3. THE CONTRACTOR SHALL BE RESPONSIBLE FOR LOCATING EXISTING IDOT ELECTRICAL FACILITIES AT HIS/HER OWN EXPENSE IF REQUIRED. THE CONTRACTOR SHALL ALSO BE LIABLE FOR ANY DAMAGE TO IDOT FACILITIES RESULTING FROM INACCURATE LOCATING.
4. ELECTRICAL WORK SHALL CONFORM WITH NATIONAL, STATE, AND LOCAL CODES.
5. ALL TRAFFIC SIGNAL SECTIONS SHALL HAVE 12" SINGLE LED LENSES.
6. THE RED SECTIONS OF THE SIGNAL HEADS SHARING THE SAME MAST ARM SHALL BE LEVEL WITH ONE ANOTHER AND MAINTAIN A 16 FT. MINIMUM CLEARANCE FROM THE HIGHEST POINT OF THE ROADWAY.
7. ALL TRAFFIC SIGNAL HEAD BRACKETS ARE TO BE ALUMINUM WITH A NATURAL FINISH.
8. THE EXISTING TRAFFIC SIGNALS SHALL REMAIN IN OPERATION DURING THE CONSTRUCTION OF THE PROPOSED TRAFFIC SIGNALS.
9. THE CONTRACTOR SHALL PROVIDE ELECTRICAL CABLE SLACK IN ACCORDANCE WITH ARTICLE 873.03.
10. ELECTRICAL CABLE WILL BE MEASURED FOR PAYMENT IN ACCORDANCE WITH ARTICLE 873.04.
11. ALL SURPLUS MATERIALS SHALL BE DISPOSED OF IN ACCORDANCE WITH ARTICLE 202.03 OF THE STANDARD SPECIFICATIONS.
12. REMOVAL OF EXISTING TRAFFIC SIGNAL ITEMS AND LUMINAIRES WILL NOT BE PAID FOR SEPARATELY, BUT SHALL BE INCLUDED IN THE UNIT BID PRICES FOR THE PROPOSED ITEMS.
13. ALL LED MODULES SHALL BE RECYCLED AT A CERTIFIED RECYCLING FACILITY. ALL COSTS, INCLUDING RECYLING AND SHIPPING CHARGES, SHALL BE INCLUDED IN THE PAY ITEMS FOR EACH LED TYPE. THE CONTRACTOR SHALL SUBMIT SUPPORTING DOCUMENTATION FOR ALL RECYCLING ACTIVITIES.
16. THE CONTRACTOR MAY ELECT TO CHANGE LED MODULES DURING NON-PEAK HOURS AND WEEKENDS, HOWEVER, ALL COSTS ASSOCIATED WITH WORKING DURING THESE TIME PERIODS SHALL BE INCLUDED IN THE BID PRICE FOR THE LED MODULE PAY ITEMS. THERE WILL BE NO ADDITIONAL COMPENSATION FOR SHIFT DIFFERENTIALS AND PREMIUM TIME HOURS.
17. PRIOR TO COMMENCING WORK, THE CONTRACTOR SHALL ACQUIRE ALL PERTINENT MANUFACTURER'S OPERATION AND MAINTENANCE MANUALS FOR THE TOWER LOWERING DEVICES AND LUMINAIRES. THE CONTRACTOR SHALL BE FAMILIAR AND KNOWLEDGEABLE IN THE MAINTENANCE AND OPERATION OF THE LIGHTING EQUIPMENT.
18. THE CONTRACTOR SHALL HAVE ALL REQUIRED EQUIPMENT AND SUFFICIENT SUPPLIES OF ALL REQUIRED MATERIALS AVAILABLE AT THE IMMEDIATE WORK SITE TO MINIMIZE WORK OPERATIONS AND TRAFFIC DISRUPTIONS, INCREASE OPERATIONAL EFFICIENCY, AND PREVENT UNNECESSARY LOWERING OF THE LUMINAIRE RING.
19. THE CONTRACTOR SHALL HAVE ALL REQUIRED EQUIPMENT AND SUFFICIENT SUPPLIES OF ALL REQUIRED MATERIALS AVAILABLE AT THE IMMEDIATE WORK SITE TO MINIMIZE WORK OPERATIONS AND TRAFFIC DISRUPTIONS, INCREASE OPERATIONAL EFFICIENCY, AND PREVENT UNNECESSARY LOWERING OF THE LUMINAIRE RING.

COMMITMENTS: THERE ARE NO COMMITMENTS MADE IN CONJUNCTION WITH THIS PROJECT.

LEGEND

- EX. HIGH MAST LIGHT TOWER
- EX. LIGHT POLE
- ⊠ EX. LIGHTING CONTROLLER

LIGHT TOWER DESIGNATION

6 EFG
L-04

- 6 - DENOTES NUMBER OF LUMINAIRES ON TOWER
- E - DENOTES LIGHTING CONTROLLER
- FG - DENOTES LIGHTING CIRCUIT
- L-04 - DENOTES LIGHT ON CIRCUIT DIAGRAM

TRAFFIC CONTROL NOTES

1. TRAFFIC SHALL BE MAINTAINED ON THE ASSOCIATED ROADWAYS AT ALL TIMES DURING CONSTRUCTION.
2. ALL LANE CLOSURES FOR ROADWAYS THAT HAVE LESS THAN THREE LANES SHALL BE MADE DURING OFF-PEAK TRAFFIC HOURS, DEFINED AS TIME PERIODS FROM 8:30 A.M. TO 3:00 P.M. AND 5:30 P.M. TO 7:00 A.M.
3. THE CONTRACTOR SHALL NOTIFY THE ENGINEER FORTY-EIGHT (48) HOURS BEFORE THE TIME OF A PLANNED CLOSURE.
4. WHEN WORKING ON THE MEDIAN LIGHT TOWERS, THE CONTRACTOR WILL BE REQUIRED TO CLOSE THE INSIDE LANES IN BOTH DIRECTIONS. THERE WILL BE NO ADDITIONAL COMPENSATION FOR THIS ITEM.

FILE NAME : 68852 - High Mast Lighting Maintenance	USER NAME : key@ibp	DESIGNED -	REVISED -	STATE OF ILLINOIS DEPARTMENT OF TRANSPORTATION	COMMITMENTS AND CONSTRUCTION NOTES	F.A.P. RTE.	SECTION	COUNTY	TOTAL SHEETS	SHEET NO.	
	Final 7-19-13.dgn	DRAWN -	REVISED -			VAR	D4 HIGH MAST REPAIR 2014	VARIOUS	41	2	
	PLOT SCALE = 1/4" = 1'-0"	CHECKED -	REVISED -			CONTRACT NO. 68B52					
	PLOT DATE = 7/19/2013	DATE -	REVISED -			ILLINOIS FED. AID PROJECT					

SUMMARY OF QUANTITIES

SUMMARY OF QUANTITIES				MARSHALL COUNTY	PEORIA COUNTY	TAZEWELL COUNTY	WOODFORD COUNTY
				CONST. TYPE CODE 0021 100% STATE RURAL	CONST. TYPE CODE 0021 100% STATE URBAN	CONST. TYPE CODE 0021 100% STATE URBAN	CONST. TYPE CODE 0021 100% STATE RURAL
CODE NUMBER	ITEM DESCRIPTION	UNIT	TOTAL QTY.				
67100100	MOBILIZATION	L SUM	1.0	0.1	0.6	0.2	0.1
70100700	TRAFFIC CONTROL & PROTECTION STANDARD 701406	L SUM	1.0		0.8	0.2	
70100825	TRAFFIC CONTROL AND PROTECTION, STANDARD 701456	L SUM	1.0		0.8	0.2	
70102630	TRAFFIC CONTROL AND PROTECTION, STANDARD 701601	L SUM	1.0		0.8	0.2	
70102635	TRAFFIC CONTROL AND PROTECTION, STANDARD 701701	L SUM	1.0			1.0	
82102250	LUMINAIRE, SODIUM VAPOR, HORIZONTAL MOUNT, 250 WATT	EACH	22.0		22.0		
82200700	AVIATION OBSTRUCTION WARNING LUMINAIRE	EACH	6.0		6.0		
88030020	SIGNAL HEAD, LED, 1-FACE, 3-SECTION, MAST-ARM MOUNTED	EACH	2.0			2.0	
88030100	SIGNAL HEAD, LED, 1-FACE, 5-SECTION, BRACKET MOUNTED	EACH	1.0			1.0	
X0326775	INSPECT HIGH MAST LIGHTING TOWER	EACH	179.0	4.0	122.0	42.0	11.0
X0326776	RELAMP HIGH MAST TOWER LUMINAIRE, 400 WATT	EACH	1010.0	16.0	689.0	257.0	48.0
X0326777	REPLACE HIGH MAST LUMINAIRE BALLAST ASSEMBLY, 400 WATT	EACH	65.0	1.0	40.0	18.0	6.0
X0326778	REPLACE HIGH MAST TOWER LOWERING DEVICE MOTOR	EACH	4.0		3.0	1.0	
X0326779	REPLACE HIGH MAST TOWER GEAR BOX ASSEMBLY	EACH	2.0		2.0		
X0326784	MAINTAIN EXISTING LIGHTING CONTROLLER	EACH	18.0	1.0	10.0	5.0	2.0
X0327375	REPLACE LUMINAIRE BALLAST ASSEMBLY	EACH	4.0		4.0		

SUMMARY OF QUANTITIES

				MARSHALL COUNTY	PEORIA COUNTY	TAZEWELL COUNTY	WOODFORD COUNTY
				CONST. TYPE CODE 0021 100% STATE RURAL	CONST. TYPE CODE 0021 100% STATE URBAN	CONST. TYPE CODE 0021 100% STATE URBAN	CONST. TYPE CODE 0021 100% STATE RURAL
CODE NUMBER	ITEM DESCRIPTION	UNIT	TOTAL QTY.				
X7010216	TRAFFIC CONTROL AND PROTECTION, (SPECIAL)	L SUM	1.0		1.0		
X8809010	LED SIGNAL FACE RETROFIT, 12" COUNTDOWN TIMER	EACH	14.0			14.0	
X8809120	LED SIGNAL FACE RETROFIT, YELLOW/GREEN DUAL MODE ARROW	EACH	3.0			3.0	
X8809230	LED SIGNAL FACE RETROFIT, 12" WALKING MAN/HAND	EACH	14.0			14.0	
X8809260	LED SIGNAL FACE RETROFIT, 16" WALKING MAN/HAND WITH COUNTDOWN TIMER	EACH	16.0			16.0	
Z0033002	LED SIGNAL FACE RETROFIT, RED BALL	EACH	122.0			122.0	
Z0033004	LED SIGNAL FACE RETROFIT, GREEN BALL	EACH	108.0			108.0	
Z0033008	LED SIGNAL FACE RETROFIT, YELLOW BALL	EACH	122.0			122.0	
Z0033010	LED SIGNAL FACE RETROFIT, YELLOW ARROW	EACH	25.0			25.0	
Z0033012	LED SIGNAL FACE RETROFIT, GREEN ARROW	EACH	40.0			40.0	
Z0033018	LED SIGNAL FACE RETROFIT, RED ARROW	EACH	12.0			12.0	
Z0033022	CLEAN AND RELAMP EXISTING LUMINAIRE	EACH	34.0		34.0		
X0326780	RELAMP UNDERPASS LUMINAIRE, 100 WATT	EACH	262.0		200.0	62.0	
X0326781	REPLACE UNDERPASS LUMINAIRE BALLAST ASSEMBLY, 100 WATT	FOOT	20.0		14.0	6.0	
X0326782	RELAMP TUNNEL LUMINAIRE	EACH	478.0		478.0		
X0326783	REPLACE TUNNEL LUMINAIRE BALLAST ASSEMBLY	EACH	20.0		20.0		



HIGH MAST TOWER LOCATIONS (PEORIA COUNTY)

HIGH MAST TOWER								LUMINAIRE					
LOCATION					IDENTIFICATION			QUANTITY	DISTRIB. TYPE	SHIELD SIZE		WATTAGE/VOLTAGE	INSTALL CONTRACT
ROADWAY	COUNTY	STATION	OFFSET	HEIGHT (M)	CONT.	CIRCUIT	NUMBER			HOUSE SIDE	STREET SIDE		
I-74	PEORIA	142+238.1	MEDIAN	24	S	AB	5	4	M-C-III	300	300	400W/240V	68197
I-74	PEORIA	142+388.1	MEDIAN	24	S	AB	4	4	M-C-III	300	300	400W/240V	68200
I-74	PEORIA	142+487.2	MEDIAN	24	S	AB	3	6	M-C-III	200	200	400W/240V	68200
I-74	PEORIA	142+586.6	MEDIAN	24	S	AB	2	6	M-C-III	200	200	400W/240V	68197
I-74	PEORIA	142+690.2	MEDIAN	24	S	AB	1	8	M-C-V	200	200	400W/240V	68197
I-74	PEORIA	142+792.9	MEDIAN	24	S	CD	2	8	M-C-V	200	200	400W/240V	68197
I-74	PEORIA	142+902.6	29.4 L	30	S	HI	1	5	M-C-III	200	200	400W/240V	68200
I-74	PEORIA	142+925.0	19.2 R	30	S	CD	1	5	M-C-II	300	300	400W/240V	68197
I-74	PEORIA	143+046.2	41.0 R	30	S	JK	1	4	M-C-II	400	N.A.	400W/240V	68197
I-74	PEORIA	143+067.5	27.0 L	30	S	HI	2	5	M-C-V	200	200	400W/240V	68200
I-74	PEORIA	143+189.7	25.8 R	30	S	JK	2	4	M-C-II	400	N.A.	400W/240V	68197
I-74	PEORIA	143+206.0	32.5 L	30	S	HI	3	5	M-C-V	200	200	400W/240V	68200
I-74	PEORIA	143+290.0	32.0 L	30	S	HI	4	6	M-C-III	200	200	400W/240V	68200
I-74	PEORIA	143+353.6	24.5 R	30	S	JK	3	4	M-C-II	400	N.A.	400W/240V	68197
I-74	PEORIA	143+415.0	28.0 L	30	S	HI	5	6	M-C-II	300	300	400W/240V	68200
I-74	PEORIA	143+420.7	237.7 L	30	J	GH	2	8	M-C-V	200	200	400W/240V	68200
I-74	PEORIA	143+461.1	106.0 L	30	J	GH	3	8	M-C-II	400	N.A.	400W/240V	68200
I-74	PEORIA	143+474.4	213.0 L	30	J	EF	4	6	M-C-II	300	300	400W/240V	68200
I-74	PEORIA	143+504.0	44.0 L	30	J	GH	4	8	M-C-II	400	N.A.	400W/240V	68200
I-74	PEORIA	143+515.7	26.0 R	30	S	JK	4	4	M-C-II	400	N.A.	400W/240V	68197
I-74	PEORIA	143+527.2	117.4 L	30	J	EF	5	6	M-C-II	400	N.A.	400W/240V	68200
I-74	PEORIA	143+581.5	50.0 L	30	W	CD	2	8	M-C-V	200	200	400W/240V	68200
I-74	PEORIA	143+639.4	65.2 R	30	W	EF	5	4	M-C-II	400	N.A.	400W/240V	68200
I-74	PEORIA	143+650.0	MEDIAN	24	W	AB	2	8	M-C-III	200	200	400W/240V	68197
I-74	PEORIA	143+704.0	55.0 L	30	W	CD	1	4	M-C-II	300	300	400W/240V	68200
I-74	PEORIA	143+741.7	149.2 R	30	W	EF	4	4	M-C-II	400	N.A.	400W/240V	68200
I-74	PEORIA	143+767.0	MEDIAN	24	W	AB	1	8	M-C-III	200	200	400W/240V	68197
I-74	PEORIA	143+868.3	218.0 R	30	W	EF	3	4	M-C-II	400	N.A.	400W/240V	68200
I-74	PEORIA	143+891.0	MEDIAN	24	W	GH	1	8	M-C-III	200	200	400W/240V	68197
I-74	PEORIA	143+938.6	40.3 R	30	W	EF	1	4	M-C-II	400	N.A.	400W/240V	68200
I-74	PEORIA	143+989.7	110.6 R	30	W	EF	2	8	M-C-II	400	N.A.	400W/240V	68200
I-74	PEORIA	144+026.0	MEDIAN	24	W	GH	2	6	M-C-III	200	200	400W/240V	68197
I-74	PEORIA	144+092.0	63.0 R	30	W	EF	6	4	M-C-II	400	N.A.	400W/240V	68200
I-74	PEORIA	144+152.7	MEDIAN	24	W	GH	3	6	M-C-III	200	200	400W/240V	68197
I-74	PEORIA	144+282.7	MEDIAN	24	W	GH	4	6	M-C-III	200	200	400W/240V	68197
I-74	PEORIA	144+424.1	MEDIAN	24	F	GH	3	6	M-C-III	200	200	400W/240V	68197
I-74	PEORIA	144+582.0	MEDIAN	24	F	GH	2	6	M-C-III	400	400	400W/240V	68197
I-74	PEORIA	144+731.6	MEDIAN	24	F	GH	1	6	M-C-III	300	300	400W/240V	68197
I-74	PEORIA	144+849.3	MEDIAN	24	F	AB	4	6	M-C-III	300	300	400W/240V	68197
I-74	PEORIA	144+991.2	MEDIAN	24	F	AB	3	5	M-C-III	300	300	400W/240V	68197
I-74	PEORIA	145+050.0	38.0 R	30	F	AB	2	3	M-C-III	400	400	400W/240V	68197



HIGH MAST TOWER LOCATIONS (PEORIA COUNTY)

HIGH MAST TOWER								LUMINAIRE					
LOCATION					IDENTIFICATION			QUANTITY	DISTRIB. TYPE	SHIELD SIZE		WATTAGE/ VOLTAGE	INSTALL CONTRACT
ROADWAY	COUNTY	STATION	OFFSET	HEIGHT (M)	CONT.	CIRCUIT	NUMBER			HOUSE SIDE	STREET SIDE		
I-74	PEORIA	145+121.2	MEDIAN	24	G	AB	4	5	M-C-III	200	200	400W/240V	68197
I-74	PEORIA	145+144.6	30.0 R	30	F	AB	1	3	M-C-III	400	400	400W/240V	68197
I-74	PEORIA	145+238.7	MEDIAN	24	G	AB	3	8	M-C-III	200	200	400W/240V	68197
I-74	PEORIA	145+295.8	69.8 R	30	F	CD	1	8	M-C-V	200	200	400W/240V	68197
I-74	PEORIA	145+299.2	62.6 L	30	G	AB	2	3	M-C-III	400	400	400W/240V	68197
I-74	PEORIA	145+376.2	92.3 L	30	G	AB	1	8	M-C-III	200	200	400W/240V	68197
I-74	PEORIA	145+385.2	MEDIAN	24	F	CD	3	6	M-C-III	200	200	400W/240V	68197
I-74	PEORIA	145+400.3	38.3 R	30	F	CD	2	3	M-C-II	400	400	400W/240V	68197
I-74	PEORIA	145+524.8	MEDIAN	24	F	CD	4	6	M-C-III	200	200	400W/240V	68197
I-74	PEORIA	145+554.2	66.6 L	30	G	CD	1	5	M-C-II	400	N.A.	400W/240V	68200
I-74	PEORIA	145+666.3	MEDIAN	24	F	CD	5	6	M-C-III	400	400	400W/240V	68197
I-74	PEORIA	145+715.2	57.6 L	30	G	CD	2	5	M-C-II	400	N.A.	400W/240V	68200
I-74	PEORIA	145+805.6	MEDIAN	24	G	CD	3	8	M-C-V	300	300	400W/240V	68197
I-74	PEORIA	145+935.6	MEDIAN	24	G	CD	4	5	M-C-III	300	300	400W/240V	68197
I-74	PEORIA	146+066.7	MEDIAN	24	G	EF	1	5	M-C-III	300	300	400W/240V	68197
I-74	PEORIA	146+206.0	MEDIAN	24	G	EF	2	6	M-C-II	400	400	400W/240V	68197
I-74	PEORIA	146+346.0	MEDIAN	24	G	EF	3	6	M-C-II	400	400	400W/240V	68197
I-74	PEORIA	146+489.5	MEDIAN	24	F	AB	4	8	M-C-II	400	400	400W/240V	68198
I-74	PEORIA	146+652.0	MEDIAN	24	F	AB	3	6	M-C-II	400	400	400W/240V	68198
I-74	PEORIA	146+793.0	MEDIAN	24	F	AB	2	6	M-C-III	200	200	400W/240V	68198
I-74	PEORIA	146+931.0	MEDIAN	24	F	AB	1	6	M-C-III	200	200	400W/240V	68198
I-74	PEORIA	146+974.3	34.8 R	24	F	GH	2	3	M-C-II	300	300	400W/240V	68198
I-74	PEORIA	147+059.2	72.0 L	24	N	AB	5	3	M-C-II	200	200	400W/240V	68198
I-74	PEORIA	147+062.0	MEDIAN	24	F	GH	3	8	M-C-V	200	200	400W/240V	68198
I-74	PEORIA	147+102.4	71.4 R	30	F	GH	1	4	M-C-III	300	300	400W/240V	68198
I-74	PEORIA	147+149.0	60.8 L	30	N	AB	4	8	M-C-III	200	200	400W/240V	68198
I-74	PEORIA	147+174.0	114.4 R	30	F	CD	1	4	M-C-III	200	200	400W/240V	68198
I-74	PEORIA	147+198.5	32.3 R	24	F	CD	2	8	M-C-III	200	200	400W/240V	68198
I-74	PEORIA	147+275.3	50.1 L	24	N	AB	3	8	M-C-III	200	200	400W/240V	68198
I-74	PEORIA	147+277.0	56.2 R	30	F	IJ	1	8	M-C-III	200	200	400W/240V	68198
I-74	PEORIA	147+38.0	128.0 L	30	N	AB	2	6	M-C-III	200	200	400W/240V	68198
I-74	PEORIA	147+382.8	45.6 R	24	F	IJ	2	3	M-C-III	200	200	400W/240V	68198
I-74	PEORIA	147+383.4	60.0 L	24	N	AB	1	8	M-C-III	200	200	400W/240V	68198
I-74	PEORIA	147+498.0	36.7 R	24	F	IJ	3	3	M-C-III	200	200	400W/240V	68198
I-74	PEORIA	147+534.0	50.0 L	24	N	CD	1	3	M-C-II	200	200	400W/240V	68198
I-74	PEORIA	147+607.5	46.0 L	24	N	EF	1	3	M-C-II	200	200	400W/240V	68198
I-74	PEORIA	147+614.2	33.3 R	24	F	IJ	4	3	M-C-II	200	200	400W/240V	68198
I-74	PEORIA	147+762.0	46.8 L	24	N	CD	2	3	M-C-II	200	200	400W/240V	68198
I-74	PEORIA	147+768.0	32.5 R	24	F	IJ	5	3	M-C-II	200	200	400W/240V	68198
I-74	PEORIA	147+906.0	WB MEDIAN	24	N	EF	2	8	M-C-III	200	200	400W/240V	68198
I-74	PEORIA	148+007.7	WB MEDIAN	24	N	CD	3	6	M-C-V	200	200	400W/240V	68198

FILE NAME = 68B52 - High Mast Lighting Maintenance
 USER NAME = keithbr
 Final 7-19-13.dgn
 PLOT SCALE = 1/4" = 164.7568' / in.
 PLOT DATE = 7/19/2013

DESIGNED -
 DRAWN -
 CHECKED -
 DATE -

REVISED -
 REVISED -
 REVISED -
 REVISED -

**STATE OF ILLINOIS
 DEPARTMENT OF TRANSPORTATION**

**LIGHT TOWER AND LUMINAIRE INFORMATION (PEORIA COUNTY)
 CONTINUED**

SCALE: SHEET NO. 16 OF 62 SHEETS STA. TO STA.

F.A.P. RTE.	SECTION	COUNTY	TOTAL SHEETS	SHEET NO.
VAR	D4 HIGH MAST REPAIR 2014	VARIOUS	41	6
ILLINOIS FED. AID PROJECT			CONTRACT NO. 68B52	



HIGH MAST TOWER LOCATIONS (PEORIA COUNTY)

HIGH MAST TOWER								LUMINAIRE					
LOCATION				IDENTIFICATION				QUANTITY	DISTRIB. TYPE	SHIELD SIZE		WATTAGE/ VOLTAGE	INSTALL CONTRACT
ROADWAY	COUNTY	STATION	OFFSET	HEIGHT (M)	CONT.	CIRCUIT	NUMBER			HOUSE SIDE	STREET SIDE		
I-74	PEORIA	148+131.1	MEDIAN	24	N	EF	3	6	M-C-III	200	200	400W/240V	68198
I-74	PEORIA	148+245.0	MEDIAN	24	N	CD	4	6	M-C-V	200	200	400W/240V	68198
I-74	PEORIA	148+374.6	MEDIAN	24	E	CD	4	6	M-C-V	200	200	400W/240V	68198
I-74	PEORIA	148+489.8	MEDIAN	24	E	CD	3	6	M-C-V	300	300	400W/240V	68198
I-74	PEORIA	148+605.5	MEDIAN	24	E	CD	2	6	M-C-V	300	300	400W/240V	68198
I-74	PEORIA	148+723.5	MEDIAN	24	E	CD	1	6	M-C-V	300	300	400W/240V	68198
I-74	PEORIA	148+801.3	63.3 L	24	E	FG	1	6	M-C-V	300	300	400W/240V	68198
I-74	PEORIA	148+838.0	MEDIAN	24	E	FG	3	8	M-C-V	300	300	400W/240V	68198
I-74	PEORIA	148+915.1	47.6 L	24	E	FG	2	6	M-C-II	300	300	400W/240V	68198
I-74	PEORIA	149+005.4	MEDIAN	24	E	FG	4	6	M-C-II	300	300	400W/240V	68198
I-74	PEORIA	149+145.7	MEDIAN	24	G	AB	4	6	M-C-II	300	300	400W/240V	68198
I-74	PEORIA	149+292.9	MEDIAN	24	G	AB	3	6	M-C-II	300	300	400W/240V	68198
I-74	PEORIA	149+398.5	MEDIAN	24	G	AB	2	6	M-C-V	200	200	400W/240V	68198
I-74	PEORIA	149+504.6	MEDIAN	24	G	AB	1	6	M-C-V	200	200	400W/240V	68198
I-74	PEORIA	149+612.0	MEDIAN	24	G	CD	1	6	M-C-V	200	200	400W/240V	68198
I-74	PEORIA	149+732.0	MEDIAN	24	G	CD	2	8	M-C-II	400	400	400W/240V	68198
I-74	PEORIA	149+866.5	MEDIAN	24	G	CD	3	8	M-C-II	300	300	400W/240V	68196
I-74	PEORIA	150+006.5	MEDIAN	24	A	BC	1	8	M-C-II	300	300	400W/240V	68196
I-74	PEORIA	150+130.0	44.0 R	24	A	DE	2	4	M-C-II	300	300	400W/240V	68196
I-74	PEORIA	150+152.0	MEDIAN	24	A	FG	1	8	M-C-II	300	300	400W/240V	68196
I-74	PEORIA	150+199.0	39.0 R	24	A	DE	1	5	M-C-II	300	300	400W/240V	68196
I-74	PEORIA	150+251.0	MEDIAN	24	A	FG	2	6	M-C-V	300	300	400W/240V	68196
I-74	PEORIA	150+296.0	50.0 L	24	A	HI	1	4	M-C-II	300	300	400W/240V	68196
I-74	PEORIA	150+297.0	31.0 R	24	A	DE	3	5	M-C-III	300	300	400W/240V	68196
I-74	PEORIA	150+342.0	MEDIAN	24	A	FG	3	6	M-C-V	300	300	400W/240V	68196
I-74	PEORIA	150+412.0	26.0 L	24	A	HI	2	4	M-C-II	300	300	400W/240V	68196
I-74	PEORIA	150+439.0	15.0 R	24	A	HI	3	4	M-C-II	300	300	400W/240V	68196
WAR DR.	PEORIA	39+716.0	35.0 L	24	J	CD	4	8	M-C-II	400	N.A.	400W/240V	68200
WAR DR.	PEORIA	39+807.0	31.0 R	24	J	CD	5	4	M-C-V	200	200	400W/240V	68200
WAR DR.	PEORIA	39+864.0	107.0 L	24	J	CD	2	6	M-C-III	200	200	400W/240V	68200
WAR DR.	PEORIA	39+898.0	26.0 L	24	J	AB	1	6	M-C-II	200	200	400W/240V	68200
WAR DR.	PEORIA	39+953.0	166.0 L	24	J	CD	3	4	M-C-III	200	200	400W/240V	68200
WAR DR.	PEORIA	40+000.0	27.0 R	24	J	AB	2	4	M-C-III	200	200	400W/240V	68200
WAR DR.	PEORIA	40+012.0	72.0 L	30	J	CD	1	4	M-C-II	300	300	400W/240V	68200
WAR DR.	PEORIA	40+123.0	23.0 L	24	J	EF	1	4	M-C-III	200	200	400W/240V	68200
WAR DR.	PEORIA	40+145.0	53.0 R	24	J	AB	3	4	M-C-III	200	200	400W/240V	68200
WAR DR.	PEORIA	40+208.0	24.0 R	24	J	GH	1	6	M-C-III	200	200	400W/240V	68200
WAR DR.	PEORIA	40+266.0	23.0 L	24	J	EF	2	4	M-C-V	200	200	400W/240V	68200
WAR DR.	PEORIA	40+276.0	27.0 R	24	J	EF	3	6	M-C-III	200	200	400W/240V	68200

FILE NAME = 68B52 - High Mast Lighting Maintenance

USER NAME = keithbr
 Final 7-19-13.dgn
 PLOT SCALE = 164.7568' / in.
 PLOT DATE = 7/19/2013

DESIGNED -
 DRAWN -
 CHECKED -
 DATE -

REVISED -
 REVISED -
 REVISED -
 REVISED -

**STATE OF ILLINOIS
 DEPARTMENT OF TRANSPORTATION**

**LIGHT TOWER AND LUMINAIRE INFORMATION (PEORIA COUNTY)
 CONTINUED**

SCALE: SHEET NO. 16 OF 62 SHEETS STA. TO STA.

F.A.P. RTE.	SECTION	COUNTY	TOTAL SHEETS	SHEET NO.
VAR	D4 HIGH MAST REPAIR 2014	VARIOUS	41	7
CONTRACT NO. 68B52			ILLINOIS FED. AID PROJECT	



HIGH MAST TOWER LOCATIONS (TAZEWELL COUNTY)

HIGH MAST TOWER								LUMINAIRE					
LOCATION				IDENTIFICATION				QUANTITY	DISTRIB. TYPE	SHIELD SIZE		WATTAGE/ VOLTAGE	INSTALL CONTRACT
ROADWAY	COUNTY	STATION	OFFSET	HEIGHT (M)	CONT.	CIRCUIT	NUMBER			HOUSE SIDE	STREET SIDE		
RAMP I-3	TAZEWELL	10+082.5	16.0 R	30	I	CD	2	6	M-C-III	N.A.	N.A.	400W/240V	68195
RAMP I-3	TAZEWELL	10+236.8	14.0 R	30	I	CD	3	4	M-C-III	N.A.	N.A.	400W/240V	68195
RAMP H-1	TAZEWELL	10+455.0	12.5 R	30	I	AB	2	8	M-C-V	N.A.	N.A.	400W/240V	68195
RAMP H-4	TAZEWELL	10+540.82	12.5 L	30	R	CD	3	3	M-C-II	400	N.A.	400W/240V	68195
RAMP H-1	TAZEWELL	10+558.5	10.4 R	30	I	AB	1	8	M-C-V	N.A.	N.A.	400W/240V	68195
RAMP H-1	TAZEWELL	10+678.0	42.4 L	30	I	CD	1	8	M-C-V	N.A.	N.A.	400W/240V	68195
RAMP H-4	TAZEWELL	10+680.4	12.4 L	30	R	CD	2	3	M-C-II	400	N.A.	400W/240V	68195
I-74	TAZEWELL	142+388.1	28.0 L	30	J	AB	2	6	M-C-V	N.A.	N.A.	400W/240V	68201
I-74	TAZEWELL	142+487.2	38.4 L	30	J	AB	1	6	M-C-II	200	200	400W/240V	68201
I-74	TAZEWELL	142+902.6	26.6 L	30	J	CD	1	8	M-C-II	200	200	400W/240V	68201
I-74	TAZEWELL	143+067.5	46.0 L	30	J	EF	1	5	M-C-II	200	200	400W/240V	68201
I-74	TAZEWELL	143+206.0	27.4 L	30	J	EF	2	4	M-C-V	N.A.	N.A.	400W/240V	68201
I-74	TAZEWELL	143+290.0	27.0 L	30	J	EF	3	4	M-C-III	N.A.	N.A.	400W/240V	68201
I-74	TAZEWELL	143+415.0	102.7 L	30	W	AB	3	5	M-C-V	N.A.	N.A.	400W/240V	68201
I-74	TAZEWELL	143+581.5	108.0 L	30	W	AB	4	6	M-C-V	N.A.	N.A.	400W/240V	68201
I-74	TAZEWELL	143+704.0	86.5 L	30	W	AB	5	5	M-C-II	400	N.A.	400W/240V	68201
I-74	TAZEWELL	151+415.3	16.0 L	30	R	EF	7	7	M-C-III	400	N.A.	400W/240V	68195
I-74	TAZEWELL	151+571.3	23.0 R	30	R	EF	6	7	M-C-III	400	N.A.	400W/240V	68195
I-74	TAZEWELL	151+746.0	25.3 R	30	R	EF	1	8	M-C-V	N.A.	N.A.	400W/240V	68195
I-74	TAZEWELL	151+826.6	1.50 L	24	R	CD	1	8	M-C-V	N.A.	N.A.	400W/240V	68195
I-74	TAZEWELL	151+835.5	67.5 R	30	R	GH	1	6	M-C-V	N.A.	N.A.	400W/240V	68195
I-74	TAZEWELL	151+971.0	2.00 L	24	R	AB	1	8	M-C-V	N.A.	N.A.	400W/240V	68195
I-74	TAZEWELL	152+119.0	2.50 L	24	R	AB	2	6	M-C-II	200	200	400W/240V	68195
I-74	TAZEWELL	152+264.7	3.00 L	24	R	AB	3	6	M-C-II	200	200	400W/240V	68195
I-74	TAZEWELL	152+424.0	3.50 L	24	R	AB	4	6	M-C-II	200	200	400W/240V	68195
I-74	TAZEWELL	152+594.9	MEDIAN	24	M	AB	4	6	M-C-II	200	200	400W/240V	68199
I-74	TAZEWELL	152+747.0	MEDIAN	24	M	AB	3	8	M-C-III	200	200	400W/240V	68199
I-74	TAZEWELL	152+864.0	26.0 R	30	M	AB	2	6	M-C-III	200	200	400W/240V	68199
I-74	TAZEWELL	152+995.0	34.6 R	30	M	AB	1	8	M-C-III	200	200	400W/240V	68199
I-74	TAZEWELL	153+154.0	17.5 R	30	M	CD	1	8	M-C-II	200	200	400W/240V	68199
I-74	TAZEWELL	153+328.7	27.8 R	30	M	CD	2	6	M-C-III	200	200	400W/240V	68199
I-74	TAZEWELL	153+471.7	36.6 R	36	M	CD	3	6	M-C-III	200	200	400W/240V	68199
I-74	TAZEWELL	153+782.0	MEDIAN	24	W	AB	2	8	M-C-II	400	400	400W/240V	68199
I-74	TAZEWELL	153+919.0	MEDIAN	24	W	AB	1	6	M-C-III	N.A.	N.A.	400W/240V	68199
I-74	TAZEWELL	153+938.8	85.7 R	30	W	EF	1	5	M-C-III	N.A.	N.A.	400W/240V	68199
I-74	TAZEWELL	154+045.8	MEDIAN	24	W	CD	1	6	M-C-V	N.A.	N.A.	400W/240V	68199
I-74	TAZEWELL	154+053.0	106.4 R	30	W	EF	2	6	M-C-V	N.A.	N.A.	400W/240V	68199
I-74	TAZEWELL	154+165.4	MEDIAN	24	W	CD	2	4	M-C-II	400	400	400W/240V	68199
I-74	TAZEWELL	154+196.4	71.4 R	30	W	EF	3	5	M-C-II	N.A.	N.A.	400W/240V	68199
I-74	TAZEWELL	154+295.5	MEDIAN	24	W	CD	3	6	M-C-II	400	400	400W/240V	EXISTING
I-74	TAZEWELL	154+450.0	MEDIAN	24	W	CD	4	6	M-C-II	400	400	400W/240V	68199
I-74	TAZEWELL	154+609.4	MEDIAN	24	W	CD	5	6	M-C-II	400	400	400W/240V	68199

FILE NAME = 68B52 - High Mast Lighting Maintenance

USER NAME = keithbr
 Final 7-19-13.dgn
 PLOT SCALE = 1/4" = 164.7568' / in.
 PLOT DATE = 7/19/2013

DESIGNED -
 DRAWN -
 CHECKED -
 DATE -

REVISED -
 REVISED -
 REVISED -
 REVISED -

**STATE OF ILLINOIS
 DEPARTMENT OF TRANSPORTATION**

LIGHT TOWER AND LUMINAIRE INFORMATION (TAZEWELL COUNTY)

SCALE: SHEET NO. 16 OF 62 SHEETS STA. TO STA.

F.A.P. RTE.	SECTION	COUNTY	TOTAL SHEETS	SHEET NO.
VAR	D4 HIGH MAST REPAIR 2014	VARIOUS	41	8
CONTRACT NO. 68B52			ILLINOIS FED. AID PROJECT	



LIGHTING CONTROLLER LOCATIONS			
ROADWAY	COUNTY	LOCATION	CONTROLLER
			ID
I-74 WB	PEORIA	STERLING AVE. EXIT	S
I-74 WB	PEORIA	US 150 (WAR MEMORIAL DR.) EXIT	W
US 150 WB	PEORIA	BETWEEN BRANDYWINE AND SCENIC	J
I-74 EB	PEORIA	GALE AVE.	F
I-74 WB	PEORIA	GALE AVE.	G
I-74 EB	PEORIA	UNIVERSITY ST.	F
I-74 WB	PEORIA	UNIVERSITY ST.	N
I-74 WB	PEORIA	PENNSYLVANIA	E
I-74 WB	PEORIA	GREENLEAF	B
I-74 WB	PEORIA	IL 29 (ADAMS)	A
I-74 EB	TAZEWELL	RIVERFRONT DR.	R
CAMP ST.	TAZEWELL	RIVERFRONT DR.	I
I-74 EB	TAZEWELL	IL 116 (MAIN ST.)	M
I-74 WB	TAZEWELL	IL 116 (MAIN ST.)	J
I-74 EB	TAZEWELL	WASHINGTON	W
I-39	WOODFORD	MINONK RD.	
I-39	WOODFORD	IL 116 (MAIN ST.)	
I-39	MARSHALL	IL 17	

TUNNEL LUMINAIRE LOCATIONS					
ROADWAY	COUNTY	LOCATION	LUMINAIRES	LUMINAIRES	INSTALL
			100W	400W	CONTRACT
I-74 WB	PEORIA	US 24 (WASHINGTON ST.)	11	157	68196
I-74 WB	PEORIA	IL 40 (KNOXVILLE)	14	321	68198



SCHEDULE OF QUANTITIES (SHEET 10)

ITEM DESCRIPTION	UNIT	QTY.
INSPECT HIGH MAST LIGHTING TOWER	EACH	5.0
RELAMP HIGH MAST TOWER LUMINAIRE, 400 WATT	EACH	28.0

FILE NAME = 68B52 - High Mast Lighting Maintenance	USER NAME = kesthbr	DESIGNED -	REVISED -
	Final 7-19-13.dgn	DRAWN -	REVISED -
	PLOT SCALE = 164.7568' / in.	CHECKED -	REVISED -
	PLOT DATE = 7/19/2013	DATE -	REVISED -

**STATE OF ILLINOIS
DEPARTMENT OF TRANSPORTATION**

**LIGHT TOWER INSPECTION AND MAINTENANCE
I-74 AT STERLING AVE.**

SCALE: SHEET NO. 1 OF 62 SHEETS STA. TO STA.

F.A.P. RTE.	SECTION	COUNTY	TOTAL SHEETS	SHEET NO.
VAR	D4 HIGH MAST REPAIR 2014	VARIOUS	41	10
ILLINOIS FED. AID PROJECT			CONTRACT NO. 68B52	



SCHEDULE OF QUANTITIES (SHEET 11)

ITEM DESCRIPTION	UNIT	QTY.
INSPECT HIGH MAST LIGHTING TOWER	EACH	9.0
RELAMP HIGH MAST TOWER LUMINAIRE, 400 WATT	EACH	46.0
RELAMP UNDERPASS LUMINAIRE, 100 WATT	EACH	10.0
MAINTAIN EXISTING LIGHTING CONTROLLER	EACH	1.0

FILE NAME = 68B52 - High Mast Lighting Maintenance	USER NAME = keathbr	DESIGNED -	REVISED -
	Final 7-19-13.dgn	DRAWN -	REVISED -
	PLOT SCALE = 164.7568' / in.	CHECKED -	REVISED -
	PLOT DATE = 7/19/2013	DATE -	REVISED -

**STATE OF ILLINOIS
DEPARTMENT OF TRANSPORTATION**

**LIGHT TOWER INSPECTION AND MAINTENANCE
I-74 AT STERLING AVE. (CONTINUED)**

SCALE: SHEET NO. 2 OF 62 SHEETS STA. TO STA.

F.A.P. RTE.	SECTION	COUNTY	TOTAL SHEETS	SHEET NO.
VAR	D4 HIGH MAST REPAIR 2014	VARIOUS	41	11
			CONTRACT NO. 68B52	
ILLINOIS FED. AID PROJECT				



SCHEDULE OF QUANTITIES (SHEET 12)		
ITEM DESCRIPTION	UNIT	QTY.
INSPECT HIGH MAST LIGHTING TOWER	EACH	12.0
RELAMP HIGH MAST TOWER LUMINAIRE, 400 WATT	EACH	76.0
RELAMP UNDERPASS LUMINAIRE, 100 WATT	EACH	17.0
MAINTAIN EXISTING LIGHTING CONTROLLER	EACH	1.0

FILE NAME = 68B52 - High Mast Lighting Maintenance	USER NAME = kesthbr	DESIGNED -	REVISED -
	Final 7-19-13.dgn	DRAWN -	REVISED -
	PLOT SCALE = 164.7568' / in.	CHECKED -	REVISED -
	PLOT DATE = 7/19/2013	DATE -	REVISED -

**STATE OF ILLINOIS
DEPARTMENT OF TRANSPORTATION**

**LIGHT TOWER INSPECTION AND MAINTENANCE
I-74 AT WAR MEMORIAL DR.**

SCALE: SHEET NO. 3 OF 62 SHEETS STA. TO STA.

F.A.P. RTE.	SECTION	COUNTY	TOTAL SHEETS	SHEET NO.
VAR	D4 HIGH MAST REPAIR 2014	VARIOUS	41	12
ILLINOIS FED. AID PROJECT			CONTRACT NO. 68B52	



SCHEDULE OF QUANTITIES (SHEET 13)

ITEM DESCRIPTION	UNIT	QTY.
INSPECT HIGH MAST LIGHTING TOWER	EACH	9.0
RELAMP HIGH MAST TOWER LUMINAIRE, 400 WATT	EACH	46.0
RELAMP UNDERPASS LUMINAIRE, 100 WATT	EACH	12.0
MAINTAIN EXISTING LIGHTING CONTROLLER	EACH	1.0

FILE NAME = 68B52 - High Mast Lighting Maintenance	USER NAME = kesthbr	DESIGNED -	REVISED -
	Final 7-19-13.dgn	DRAWN -	REVISED -
	PLOT SCALE = 164.7568' / in.	CHECKED -	REVISED -
	PLOT DATE = 7/19/2013	DATE -	REVISED -

**STATE OF ILLINOIS
DEPARTMENT OF TRANSPORTATION**

**LIGHT TOWER INSPECTION AND MAINTENANCE
WAR MEMORIAL DR. AT I-74 RAMPS**

SCALE: SHEET NO. 4 OF 62 SHEETS STA. TO STA.

F.A.P. RTE.	SECTION	COUNTY	TOTAL SHEETS	SHEET NO.
VAR	D4 HIGH MAST REPAIR 2014	VARIOUS	41	13
			CONTRACT NO. 68B52	
ILLINOIS FED. AID PROJECT				



SCHEDULE OF QUANTITIES (SHEET 14)		
ITEM DESCRIPTION	UNIT	QTY.
INSPECT HIGH MAST LIGHTING TOWER	EACH	5.0
RELAMP HIGH MAST TOWER LUMINAIRE, 400 WATT	EACH	28.0

FILE NAME = 68B52 - High Mast Lighting Maintenance	USER NAME = keithbr	DESIGNED -	REVISED -
	Final 7-19-13.dgn	DRAWN -	REVISED -
	PLOT SCALE = 164.7568' / in.	CHECKED -	REVISED -
	PLOT DATE = 7/19/2013	DATE -	REVISED -

**STATE OF ILLINOIS
DEPARTMENT OF TRANSPORTATION**

**LIGHT TOWER INSPECTION AND MAINTENANCE
WAR MEMORIAL DR. AT I-74 RAMPS (CONTINUED)**

SCALE: SHEET NO. 5 OF 62 SHEETS STA. TO STA.

F.A.P. RTE.	SECTION	COUNTY	TOTAL SHEETS	SHEET NO.
VAR	D4 HIGH MAST REPAIR 2014	VARIOUS	41	14
			CONTRACT NO. 68B52	
ILLINOIS FED. AID PROJECT				



SCHEDULE OF QUANTITIES (SHEET 15)		
ITEM DESCRIPTION	UNIT	QTY.
INSPECT HIGH MAST LIGHTING TOWER	EACH	7.0
RELAMP HIGH MAST TOWER LUMINAIRE, 400 WATT	EACH	38.0

FILE NAME = 68B52 - High Mast Lighting Maintenance	USER NAME = kesthbr	DESIGNED -	REVISED -
	Final 7-19-13.dgn	DRAWN -	REVISED -
	PLOT SCALE = 164.7568' / in.	CHECKED -	REVISED -
	PLOT DATE = 7/19/2013	DATE -	REVISED -

**STATE OF ILLINOIS
DEPARTMENT OF TRANSPORTATION**

**LIGHT TOWER INSPECTION AND MAINTENANCE
I-74 AT WAR MEMORIAL DRIVE**

SCALE: SHEET NO. 6 OF 62 SHEETS STA. TO STA.

F.A.P. RTE.	SECTION	COUNTY	TOTAL SHEETS	SHEET NO.
VAR	D4 HIGH MAST REPAIR 2014	VARIOUS	41	15
ILLINOIS FED. AID PROJECT			CONTRACT NO. 68B52	



SCHEDULE OF QUANTITIES (SHEET 16)

ITEM DESCRIPTION	UNIT	QTY.
INSPECT HIGH MAST LIGHTING TOWER	EACH	3.0
RELAMP HIGH MAST TOWER LUMINAIRE, 400 WATT	EACH	18.0
RELAMP UNDERPASS LUMINAIRE, 100 WATT	EACH	12.0

FILE NAME = 68B52 - High Mast Lighting Maintenance	USER NAME = keithbr	DESIGNED -	REVISED -
	Final 7-19-13.dgn	DRAWN -	REVISED -
	PLOT SCALE = 164.7568' / in.	CHECKED -	REVISED -
	PLOT DATE = 7/19/2013	DATE -	REVISED -

**STATE OF ILLINOIS
DEPARTMENT OF TRANSPORTATION**

**LIGHT TOWER INSPECTION AND MAINTENANCE
I-74 AT FORREST HILL**

SCALE: SHEET NO. 7 OF 62 SHEETS STA. TO STA.

F.A.P. RTE.	SECTION	COUNTY	TOTAL SHEETS	SHEET NO.
VAR	D4 HIGH MAST REPAIR 2014	VARIOUS	41	16
			CONTRACT NO. 68B52	
ILLINOIS FED. AID PROJECT				



CONT
1/1"

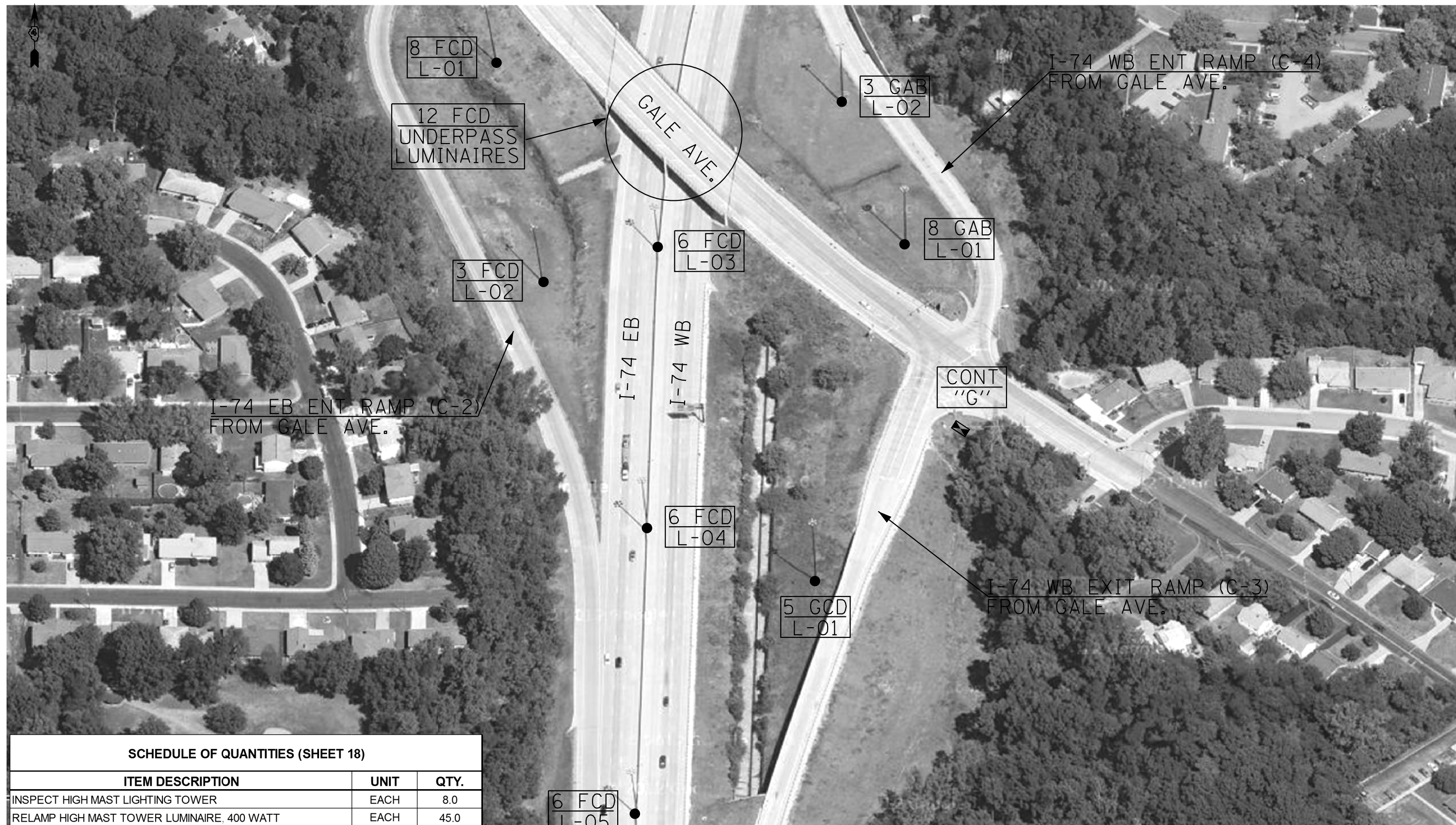
SCHEDULE OF QUANTITIES (SHEET 17)		
ITEM DESCRIPTION	UNIT	QTY.
INSPECT HIGH MAST LIGHTING TOWER	EACH	6.0
RELAMP HIGH MAST TOWER LUMINAIRE, 400 WATT	EACH	30.0
MAINTAIN EXISTING LIGHTING CONTROLLER	EACH	1.0

FILE NAME = 68B52 - High Mast Lighting Maintenance	USER NAME = keathbr	DESIGNED -	REVISED -
	Final 7-19-13.dgn	DRAWN -	REVISED -
	PLOT SCALE = 164.7568' / 1" =	CHECKED -	REVISED -
	PLOT DATE = 7/19/2013	DATE -	REVISED -

STATE OF ILLINOIS
DEPARTMENT OF TRANSPORTATION

LIGHT TOWER INSPECTION AND MAINTENANCE			
I-74 AT GALE AVE.			
SCALE:	SHEET NO. 8 OF 62 SHEETS	STA.	TO STA.

F.A.P. RTE.	SECTION	COUNTY	TOTAL SHEETS	SHEET NO.
VAR	D4 HIGH MAST REPAIR 2014	VARIOUS	41	17
			CONTRACT NO. 68B52	
ILLINOIS FED. AID PROJECT				



SCHEDULE OF QUANTITIES (SHEET 18)

ITEM DESCRIPTION	UNIT	QTY.
INSPECT HIGH MAST LIGHTING TOWER	EACH	8.0
RELAMP HIGH MAST TOWER LUMINAIRE, 400 WATT	EACH	45.0
RELAMP UNDERPASS LUMINAIRE, 100 WATT	EACH	12.0
MAINTAIN EXISTING LIGHTING CONTROLLER	EACH	1.0

FILE NAME = 68B52 - High Mast Lighting Maintenance	USER NAME = ke5thbr	DESIGNED -	REVISED -
	Final 7-19-13.dgn	DRAWN -	REVISED -
	PLOT SCALE = 164.7568' / in.	CHECKED -	REVISED -
	PLOT DATE = 7/19/2013	DATE -	REVISED -

**STATE OF ILLINOIS
DEPARTMENT OF TRANSPORTATION**

**LIGHT TOWER INSPECTION AND MAINTENANCE
I-74 AT GALE AVE. (CONTINUED)**

SCALE: SHEET NO. 9 OF 62 SHEETS STA. TO STA.

F.A.P. RTE.	SECTION	COUNTY	TOTAL SHEETS	SHEET NO.
VAR	D4 HIGH MAST REPAIR 2014	VARIOUS	41	18
			CONTRACT NO. 68B52	
ILLINOIS FED. AID PROJECT				



SCHEDULE OF QUANTITIES (SHEET 19)		
ITEM DESCRIPTION	UNIT	QTY.
INSPECT HIGH MAST LIGHTING TOWER	EACH	4.0
RELAMP HIGH MAST TOWER LUMINAIRE, 400 WATT	EACH	23.0

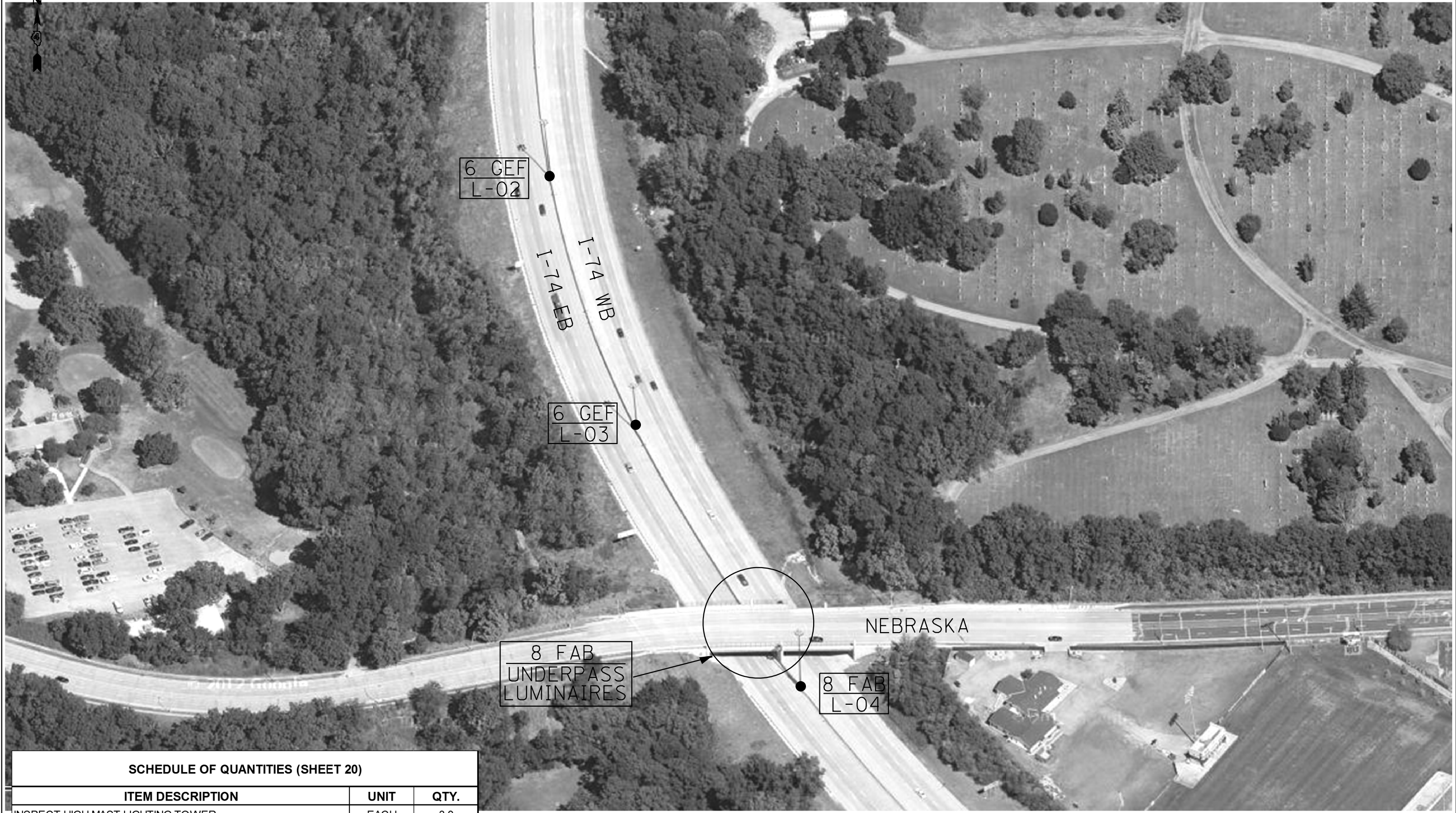
FILE NAME =	USER NAME = keithbr	DESIGNED -	REVISED -
68B52 - High Mast Lighting Maintenance	Final 7-19-13.dgn	DRAWN -	REVISED -
	PLOT SCALE = 164.7568' / in.	CHECKED -	REVISED -
	PLOT DATE = 7/19/2013	DATE -	REVISED -

**STATE OF ILLINOIS
DEPARTMENT OF TRANSPORTATION**

**LIGHT TOWER INSPECTION AND MAINTENANCE
I-74 AT GALE AVE. (CONTINUED)**

SCALE: SHEET NO. 10 OF 62 SHEETS STA. TO STA.

F.A.P. RTE.	SECTION	COUNTY	TOTAL SHEETS	SHEET NO.
VAR	D4 HIGH MAST REPAIR 2014	VARIOUS	41	19
			CONTRACT NO. 68B52	
ILLINOIS FED. AID PROJECT				



SCHEDULE OF QUANTITIES (SHEET 20)		
ITEM DESCRIPTION	UNIT	QTY.
INSPECT HIGH MAST LIGHTING TOWER	EACH	3.0
RELAMP HIGH MAST TOWER LUMINAIRE, 400 WATT	EACH	20.0
RELAMP UNDERPASS LUMINAIRE, 100 WATT	EACH	8.0

FILE NAME = 68B52 - High Mast Lighting Maintenance	USER NAME = kesthbr	DESIGNED -	REVISED -
	Final 7-19-13.dgn	DRAWN -	REVISED -
	PLOT SCALE = 164.7568' / 1" =	CHECKED -	REVISED -
	PLOT DATE = 7/19/2013	DATE -	REVISED -

**STATE OF ILLINOIS
DEPARTMENT OF TRANSPORTATION**

**LIGHT TOWER INSPECTION AND MAINTENANCE
I-74 AT NEBRASKA**

SCALE: SHEET NO. 11 OF 62 SHEETS STA. TO STA.

F.A.P. RTE.	SECTION	COUNTY	TOTAL SHEETS	SHEET NO.
VAR	D4 HIGH MAST REPAIR 2014	VARIOUS	41	20
CONTRACT NO. 68B52			ILLINOIS FED. AID PROJECT	



SCHEDULE OF QUANTITIES (SHEET 21)

ITEM DESCRIPTION	UNIT	QTY.
INSPECT HIGH MAST LIGHTING TOWER	EACH	9.0
RELAMP HIGH MAST TOWER LUMINAIRE, 400 WATT	EACH	48.0

FILE NAME = 68B52 - High Mast Lighting Maintenance	USER NAME = keathbr	DESIGNED -	REVISED -
	Final 7-19-13.dgn	DRAWN -	REVISED -
	PLOT SCALE = 164.7568' / in.	CHECKED -	REVISED -
	PLOT DATE = 7/19/2013	DATE -	REVISED -

**STATE OF ILLINOIS
DEPARTMENT OF TRANSPORTATION**

**LIGHT TOWER INSPECTION AND MAINTENANCE
I-74 AT UNIVERSITY**

SCALE: SHEET NO. 12 OF 62 SHEETS STA. TO STA.

F.A.P. RTE.	SECTION	COUNTY	TOTAL SHEETS	SHEET NO.
VAR	D4 HIGH MAST REPAIR 2014	VARIOUS	41	21
			CONTRACT NO. 68B52	
ILLINOIS FED. AID PROJECT				



SCHEDULE OF QUANTITIES (SHEET 22)		
ITEM DESCRIPTION	UNIT	QTY.
INSPECT HIGH MAST LIGHTING TOWER	EACH	10.0
RELAMP HIGH MAST TOWER LUMINAIRE, 400 WATT	EACH	53.0
RELAMP UNDERPASS LUMINAIRE, 100 WATT	EACH	12.0
MAINTAIN EXISTING LIGHTING CONTROLLER	EACH	2.0

FILE NAME = 68B52 - High Mast Lighting Maintenance	USER NAME = keathbr	DESIGNED -	REVISED -
	Final 7-19-13.dgn	DRAWN -	REVISED -
	PLOT SCALE = 164.7568' / in.	CHECKED -	REVISED -
	PLOT DATE = 7/19/2013	DATE -	REVISED -

**STATE OF ILLINOIS
DEPARTMENT OF TRANSPORTATION**

**LIGHT TOWER INSPECTION AND MAINTENANCE
I-74 AT UNIVERSITY (CONTINUED)**

SCALE: SHEET NO. 13 OF 62 SHEETS STA. TO STA.

F.A.P. RTE.	SECTION	COUNTY	TOTAL SHEETS	SHEET NO.
VAR	D4 HIGH MAST REPAIR 2014	VARIOUS	41	22
CONTRACT NO. 68B52			ILLINOIS FED. AID PROJECT	



SCHEDULE OF QUANTITIES (SHEET 23)		
ITEM DESCRIPTION	UNIT	QTY.
INSPECT HIGH MAST LIGHTING TOWER	EACH	5.0
RELAMP HIGH MAST TOWER LUMINAIRE, 400 WATT	EACH	26.0
RELAMP UNDERPASS LUMINAIRE, 100 WATT	EACH	24.0

FILE NAME = 68B52 - High Mast Lighting Maintenance	USER NAME = kesthbr	DESIGNED -	REVISED -
	Final 7-19-13.dgn	DRAWN -	REVISED -
	PLOT SCALE = 164.7568' / in.	CHECKED -	REVISED -
	PLOT DATE = 7/19/2013	DATE -	REVISED -

**STATE OF ILLINOIS
DEPARTMENT OF TRANSPORTATION**

**LIGHT TOWER INSPECTION AND MAINTENANCE
I-74 AT BROADWAY, SHERIDAN, AND ELLIS**

SCALE: SHEET NO. 14 OF 62 SHEETS STA. TO STA.

F.A.P. RTE.	SECTION	COUNTY	TOTAL SHEETS	SHEET NO.
VAR	D4 HIGH MAST REPAIR 2014	VARIOUS	41	23
			CONTRACT NO. 68B52	
ILLINOIS FED. AID PROJECT				



SCHEDULE OF QUANTITIES (SHEET 24)

ITEM DESCRIPTION	UNIT	QTY.
INSPECT HIGH MAST LIGHTING TOWER	EACH	5.0
RELAMP HIGH MAST TOWER LUMINAIRE, 400 WATT	EACH	30.0
RELAMP UNDERPASS LUMINAIRE, 100 WATT	EACH	19.0
AVIATION OBSTRUCTION WARNING LUMINAIRE	EACH	1.0
CLEAN AND RELAMP EXISTING LUMINAIRE	EACH	20.0

FILE NAME = 68B52 - High Mast Lighting Maintenance	USER NAME = kesthbr	DESIGNED -	REVISED -
Final 7-19-13.dgn		DRAWN -	REVISED -
PLOT SCALE = 164.7568' / in.		CHECKED -	REVISED -
PLOT DATE = 7/19/2013		DATE -	REVISED -

**STATE OF ILLINOIS
DEPARTMENT OF TRANSPORTATION**

**LIGHT TOWER INSPECTION AND MAINTENANCE
I-74 AT NORTH ST.**

SCALE: SHEET NO. 15 OF 62 SHEETS STA. TO STA.

F.A.P. RTE.	SECTION	COUNTY	TOTAL SHEETS	SHEET NO.
VAR	D4 HIGH MAST REPAIR 2014	VARIOUS	41	24
			CONTRACT NO. 68B52	
ILLINOIS FED. AID PROJECT				



SCHEDULE OF QUANTITIES (SHEET 25)		
ITEM DESCRIPTION	UNIT	QTY.
INSPECT HIGH MAST LIGHTING TOWER	EACH	5.0
RELAMP HIGH MAST TOWER LUMINAIRE, 400 WATT	EACH	32.0
RELAMP UNDERPASS LUMINAIRE, 100 WATT	EACH	10.0
AVIATION OBSTRUCTION WARNING LUMINAIRE	EACH	4.0
MAINTAIN EXISTING LIGHTING CONTROLLER	EACH	1.0
RELAMP TUNNEL LUMINAIRE	EACH	335.0
CLEAN AND RELAMP EXISTING LUMINAIRE	EACH	11.0

FILE NAME = 68B52 - High Mast Lighting Maintenance	USER NAME = keathbr	DESIGNED -	REVISED -
	Final 7-19-13.dgn	DRAWN -	REVISED -
	PLOT SCALE = 164.7568' / in.	CHECKED -	REVISED -
	PLOT DATE = 7/19/2013	DATE -	REVISED -

**STATE OF ILLINOIS
DEPARTMENT OF TRANSPORTATION**

**LIGHT TOWER INSPECTION AND MAINTENANCE
I-74 AT IL 40 (KNOXVILLE)**

SCALE: SHEET NO. 16 OF 62 SHEETS STA. TO STA.

F.A.P. RTE.	SECTION	COUNTY	TOTAL SHEETS	SHEET NO.
VAR	D4 HIGH MAST REPAIR 2014	VARIOUS	41	25
ILLINOIS FED. AID PROJECT			CONTRACT NO. 68B52	



SCHEDULE OF QUANTITIES (SHEET 26)		
ITEM DESCRIPTION	UNIT	QTY.
INSPECT HIGH MAST LIGHTING TOWER	EACH	4.0
RELAMP HIGH MAST TOWER LUMINAIRE, 400 WATT	EACH	24.0
RELAMP UNDERPASS LUMINAIRE, 100 WATT	EACH	18.0
AVIATION OBSTRUCTION WARNING LUMINAIRE	EACH	1.0
MAINTAIN EXISTING LIGHTING CONTROLLER	EACH	1.0
CLEAN AND RELAMP EXISTING LUMINAIRE	EACH	3.0

FILE NAME = 68B52 - High Mast Lighting Maintenance	USER NAME = kesthbr	DESIGNED -	REVISED -
	Final 7-19-13.dgn	DRAWN -	REVISED -
	PLOT SCALE = 164.7568' / 1" =	CHECKED -	REVISED -
	PLOT DATE = 7/19/2013	DATE -	REVISED -

**STATE OF ILLINOIS
DEPARTMENT OF TRANSPORTATION**

**LIGHT TOWER INSPECTION AND MAINTENANCE
I-74 AT GLEN OAK AND PERRY**

SCALE: SHEET NO. 16 OF 62 SHEETS STA. TO STA.

F.A.P. RTE.	SECTION	COUNTY	TOTAL SHEETS	SHEET NO.
VAR	D4 HIGH MAST REPAIR 2014	VARIOUS	41	26
			CONTRACT NO. 68B52	
ILLINOIS FED. AID PROJECT				



SCHEDULE OF QUANTITIES (SHEET 27)

ITEM DESCRIPTION	UNIT	QTY.
INSPECT HIGH MAST LIGHTING TOWER	EACH	5.0
RELAMP HIGH MAST TOWER LUMINAIRE, 400 WATT	EACH	36.0
RELAMP UNDERPASS LUMINAIRE, 100 WATT	EACH	28.0

FILE NAME = 68B52 - High Mast Lighting Maintenance	USER NAME = keathbr	DESIGNED -	REVISED -
	Final 7-19-13.dgn	DRAWN -	REVISED -
	PLOT SCALE = 1/4" = 1'-0"	CHECKED -	REVISED -
	PLOT DATE = 7/19/2013	DATE -	REVISED -

**STATE OF ILLINOIS
DEPARTMENT OF TRANSPORTATION**

**LIGHT TOWER INSPECTION AND MAINTENANCE
I-74 AT MONROE, MADISON, AND JEFFERSON**

SCALE: SHEET NO. 16 OF 62 SHEETS STA. TO STA.

F.A.P. RTE.	SECTION	COUNTY	TOTAL SHEETS	SHEET NO.
VAR	D4 HIGH MAST REPAIR 2014	VARIOUS	41	27
			CONTRACT NO. 68B52	
ILLINOIS FED. AID PROJECT				



SCHEDULE OF QUANTITIES (SHEET 28)		
ITEM DESCRIPTION	UNIT	QTY.
INSPECT HIGH MAST LIGHTING TOWER	EACH	7.0
RELAMP HIGH MAST TOWER LUMINAIRE, 400 WATT	EACH	34.0
RELAMP UNDERPASS LUMINAIRE, 100 WATT	EACH	18.0
MAINTAIN EXISTING LIGHTING CONTROLLER	EACH	1.0
RELAMP TUNNEL LUMINAIRE	EACH	168.0

FILE NAME = 68B52 - High Mast Lighting Maintenance	USER NAME = kesthbr	DESIGNED -	REVISED -
	Final 7-19-13.dgn	DRAWN -	REVISED -
	PLOT SCALE = 164.7568' / in.	CHECKED -	REVISED -
	PLOT DATE = 7/19/2013	DATE -	REVISED -

STATE OF ILLINOIS
DEPARTMENT OF TRANSPORTATION

LIGHT TOWER INSPECTION AND MAINTENANCE
I-74 AT ADAMS

SCALE: SHEET NO. 16 OF 62 SHEETS STA. TO STA.

F.A.P. RTE.	SECTION	COUNTY	TOTAL SHEETS	SHEET NO.
VAR	D4 HIGH MAST REPAIR 2014	VARIOUS	41	28
ILLINOIS FED. AID PROJECT			CONTRACT NO. 68B52	



SCHEDULE OF QUANTITIES (SHEET 29)

ITEM DESCRIPTION	UNIT	QTY.
INSPECT HIGH MAST LIGHTING TOWER	EACH	2.0
RELAMP HIGH MAST TOWER LUMINAIRE, 400 WATT	EACH	14.0

FILE NAME =	USER NAME = ke5thbr	DESIGNED -	REVISED -
68B52 - High Mast Lighting Maintenance	Final 7-19-13.dgn	DRAWN -	REVISED -
	PLOT SCALE = 1/4" = 164.7568' / in.	CHECKED -	REVISED -
	PLOT DATE = 7/19/2013	DATE -	REVISED -

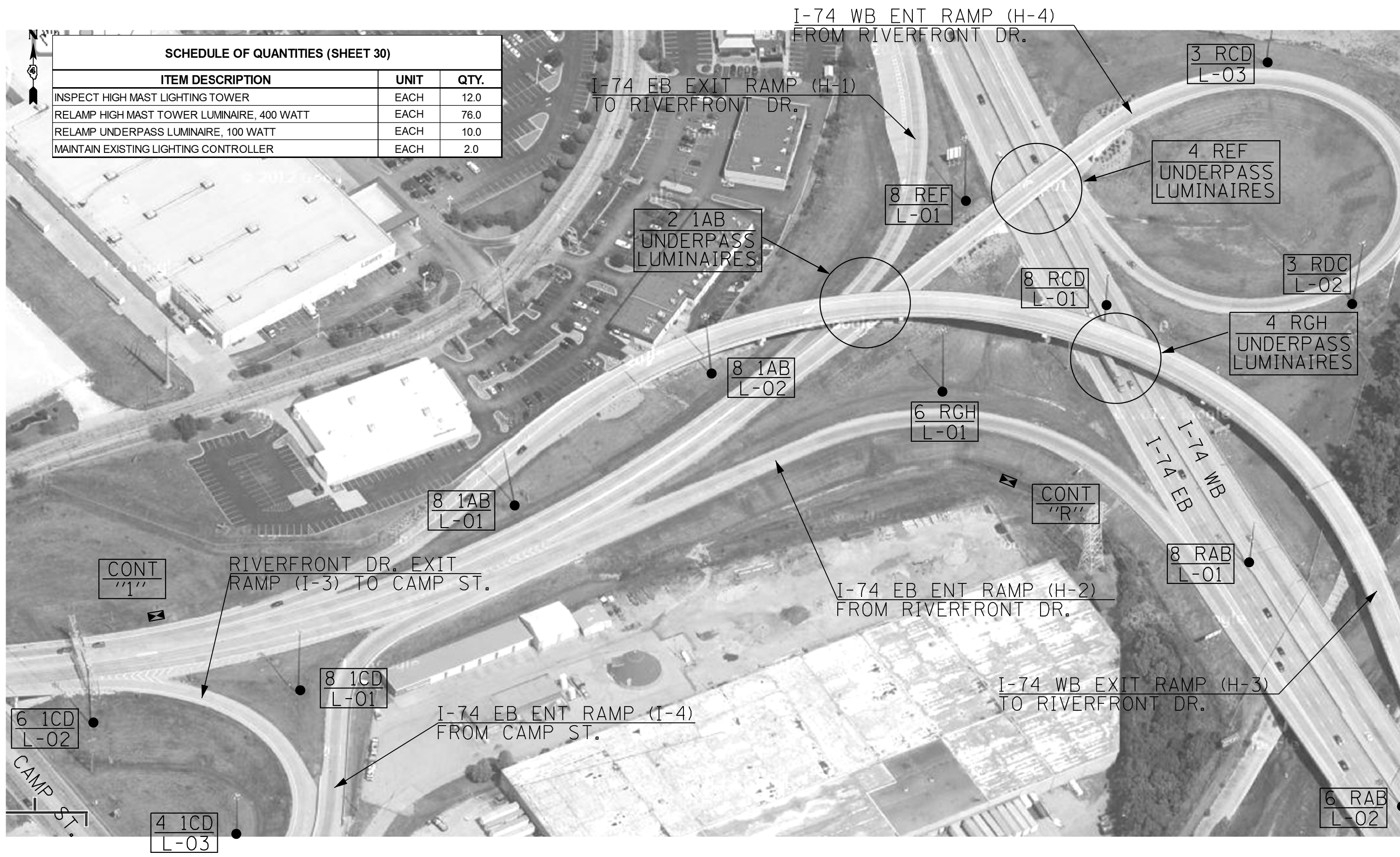
**STATE OF ILLINOIS
DEPARTMENT OF TRANSPORTATION**

**LIGHT TOWER INSPECTION AND MAINTENANCE
I-74 AT**

SCALE: SHEET NO. 16 OF 62 SHEETS STA. TO STA.

F.A.P. RTE.	SECTION	COUNTY	TOTAL SHEETS	SHEET NO.
VAR	D4 HIGH MAST REPAIR 2014	VARIOUS	41	29
			CONTRACT NO. 68B52	
ILLINOIS FED. AID PROJECT				

SCHEDULE OF QUANTITIES (SHEET 30)		
ITEM DESCRIPTION	UNIT	QTY.
INSPECT HIGH MAST LIGHTING TOWER	EACH	12.0
RELAMP HIGH MAST TOWER LUMINAIRE, 400 WATT	EACH	76.0
RELAMP UNDERPASS LUMINAIRE, 100 WATT	EACH	10.0
MAINTAIN EXISTING LIGHTING CONTROLLER	EACH	2.0



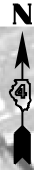
FILE NAME = 68B52 - High Mast Lighting Maintenance	USER NAME = keathbr	DESIGNED -	REVISED -
	Final 7-19-13.dgn	DRAWN -	REVISED -
	PLOT SCALE = 164.7568' / in.	CHECKED -	REVISED -
	PLOT DATE = 7/19/2013	DATE -	REVISED -

STATE OF ILLINOIS
DEPARTMENT OF TRANSPORTATION

LIGHT TOWER INSPECTION AND MAINTENANCE
I-74 AT

SCALE: SHEET NO. 16 OF 62 SHEETS STA. TO STA.

F.A.P. RTE.	SECTION	COUNTY	TOTAL SHEETS	SHEET NO.
VAR	D4 HIGH MAST REPAIR 2014	VARIOUS	41	30
			CONTRACT NO. 68B52	
ILLINOIS FED. AID PROJECT				



SCHEDULE OF QUANTITIES (SHEET 31)		
ITEM DESCRIPTION	UNIT	QTY.
INSPECT HIGH MAST LIGHTING TOWER	EACH	3.0
RELAMP HIGH MAST TOWER LUMINAIRE, 400 WATT	EACH	18.0

FILE NAME = 68B52 - High Mast Lighting Maintenance	USER NAME = kesthbr	DESIGNED -	REVISED -
	Final 7-19-13.dgn	DRAWN -	REVISED -
	PLOT SCALE = 164.7568' / in.	CHECKED -	REVISED -
	PLOT DATE = 7/19/2013	DATE -	REVISED -

**STATE OF ILLINOIS
DEPARTMENT OF TRANSPORTATION**

**LIGHT TOWER INSPECTION AND MAINTENANCE
I-74 AT**

SCALE: SHEET NO. 16 OF 62 SHEETS STA. TO STA.

F.A.P. RTE.	SECTION	COUNTY	TOTAL SHEETS	SHEET NO.
VAR	D4 HIGH MAST REPAIR 2014	VARIOUS	41	31
			CONTRACT NO. 68B52	
ILLINOIS FED. AID PROJECT				



SCHEDULE OF QUANTITIES (SHEET 32)

ITEM DESCRIPTION	UNIT	QTY.
INSPECT HIGH MAST LIGHTING TOWER	EACH	5.0
RELAMP HIGH MAST TOWER LUMINAIRE, 400 WATT	EACH	34.0
RELAMP UNDERPASS LUMINAIRE, 100 WATT	EACH	24.0
MAINTAIN EXISTING LIGHTING CONTROLLER	EACH	1.0

4 MEF
UNDERPASS
LUMINAIRES

CONT
"J"

FILE NAME = 68B52 - High Mast Lighting Maintenance	USER NAME = kesthbr	DESIGNED -	REVISED -
	Final 7-19-13.dgn	DRAWN -	REVISED -
	PLOT SCALE = 164.7568' / in.	CHECKED -	REVISED -
	PLOT DATE = 7/19/2013	DATE -	REVISED -

**STATE OF ILLINOIS
DEPARTMENT OF TRANSPORTATION**

**LIGHT TOWER INSPECTION AND MAINTENANCE
I-74 AT**

SCALE: SHEET NO. 16 OF 62 SHEETS STA. TO STA.

F.A.P. RTE.	SECTION	COUNTY	TOTAL SHEETS	SHEET NO.
VAR	D4 HIGH MAST REPAIR 2014	VARIOUS	41	32
ILLINOIS FED. AID PROJECT			CONTRACT NO. 68B52	



SCHEDULE OF QUANTITIES (SHEET 33)

ITEM DESCRIPTION	UNIT	QTY.
INSPECT HIGH MAST LIGHTING TOWER	EACH	6.0
RELAMP HIGH MAST TOWER LUMINAIRE, 400 WATT	EACH	37.0
RELAMP UNDERPASS LUMINAIRE, 100 WATT	EACH	12.0
MAINTAIN EXISTING LIGHTING CONTROLLER	EACH	1.0

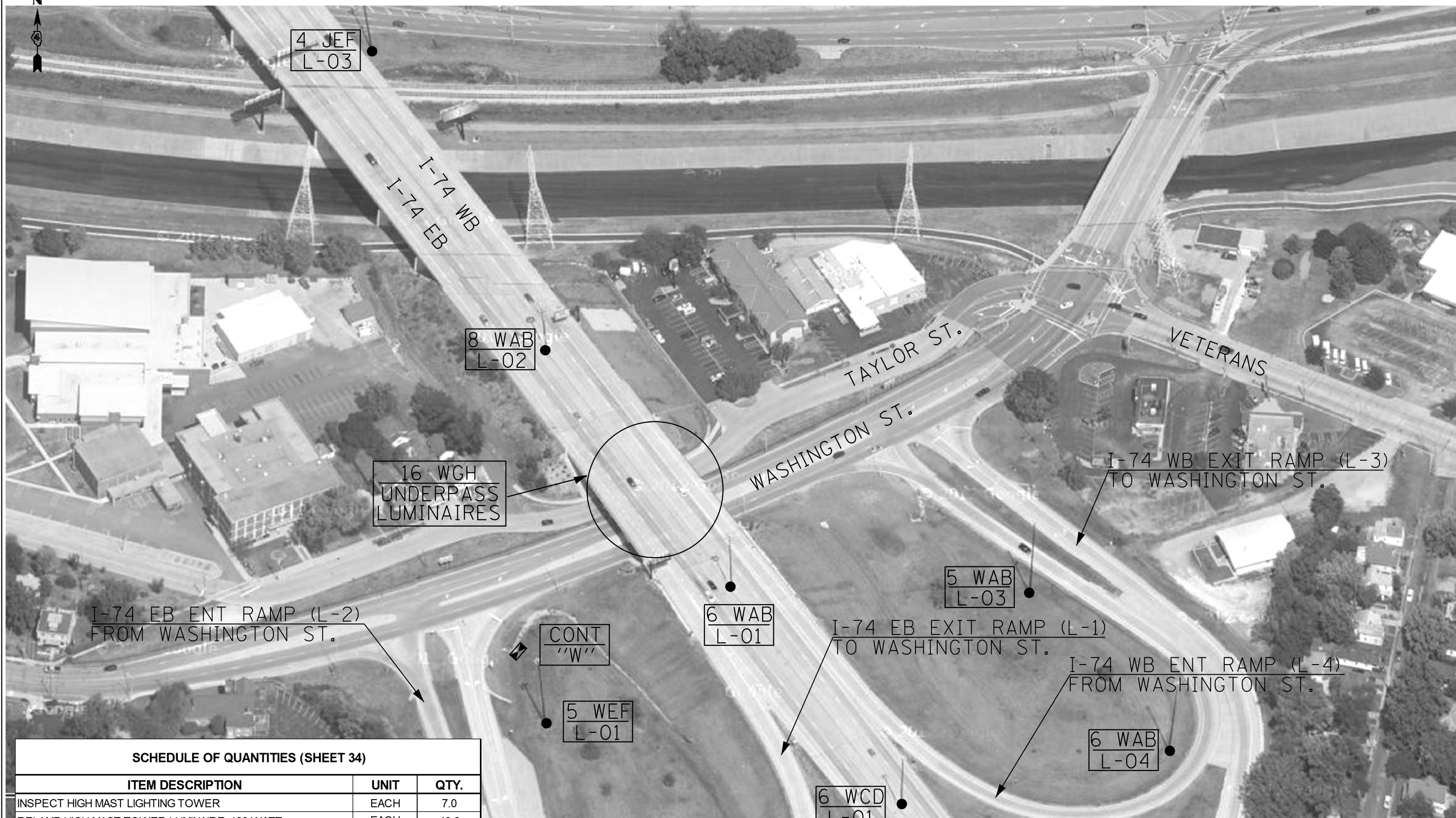
FILE NAME = 68B52 - High Mast Lighting Maintenance	USER NAME = keathbr	DESIGNED -	REVISED -
Final 7-19-13.dgn		DRAWN -	REVISED -
PLOT SCALE = 164.7568' / in.		CHECKED -	REVISED -
PLOT DATE = 7/19/2013		DATE -	REVISED -

**STATE OF ILLINOIS
DEPARTMENT OF TRANSPORTATION**

**LIGHT TOWER INSPECTION AND MAINTENANCE
I-74 AT**

SCALE: SHEET NO. 16 OF 62 SHEETS STA. TO STA.

F.A.P. RTE.	SECTION	COUNTY	TOTAL SHEETS	SHEET NO.
VAR	D4 HIGH MAST REPAIR 2014	VARIOUS	41	33
			CONTRACT NO. 68B52	
ILLINOIS FED. AID PROJECT				



SCHEDULE OF QUANTITIES (SHEET 34)

ITEM DESCRIPTION	UNIT	QTY.
INSPECT HIGH MAST LIGHTING TOWER	EACH	7.0
RELAMP HIGH MAST TOWER LUMINAIRE, 400 WATT	EACH	40.0
RELAMP UNDERPASS LUMINAIRE, 100 WATT	EACH	16.0
MAINTAIN EXISTING LIGHTING CONTROLLER	EACH	1.0

FILE NAME = 68B52 - High Mast Lighting Maintenance	USER NAME = kesthbr	DESIGNED -	REVISED -
	Final 7-19-13.dgn	DRAWN -	REVISED -
	PLOT SCALE = 164.7568' / in.	CHECKED -	REVISED -
	PLOT DATE = 7/19/2013	DATE -	REVISED -

**STATE OF ILLINOIS
DEPARTMENT OF TRANSPORTATION**

**LIGHT TOWER INSPECTION AND MAINTENANCE
I-74 AT**

SCALE: SHEET NO. 16 OF 62 SHEETS STA. TO STA.

F.A.P. RTE.	SECTION	COUNTY	TOTAL SHEETS	SHEET NO.
VAR	D4 HIGH MAST REPAIR 2014	VARIOUS	41	34
			CONTRACT NO. 68B52	
ILLINOIS FED. AID PROJECT				



SCHEDULE OF QUANTITIES (SHEET 35)

ITEM DESCRIPTION	UNIT	QTY.
INSPECT HIGH MAST LIGHTING TOWER	EACH	6.0
RELAMP HIGH MAST TOWER LUMINAIRE, 400 WATT	EACH	32.0

FILE NAME =	USER NAME = ke5thbr	DESIGNED -	REVISED -
68B52 - High Mast Lighting Maintenance	Final 7-19-13.dgn	DRAWN -	REVISED -
	PLOT SCALE = 164.7568' / in.	CHECKED -	REVISED -
	PLOT DATE = 7/19/2013	DATE -	REVISED -

**STATE OF ILLINOIS
DEPARTMENT OF TRANSPORTATION**

**LIGHT TOWER INSPECTION AND MAINTENANCE
I-74 AT**

SCALE: SHEET NO. 16 OF 62 SHEETS STA. TO STA.

F.A.P. RTE.	SECTION	COUNTY	TOTAL SHEETS	SHEET NO.
VAR	D4 HIGH MAST REPAIR 2014	VARIOUS	41	35
ILLINOIS FED. AID PROJECT			CONTRACT NO. 68B52	



6 WCD
L-05

I-74 WB
I-74 EB

SCHEDULE OF QUANTITIES (SHEET 36)		
ITEM DESCRIPTION	UNIT	QTY.
INSPECT HIGH MAST LIGHTING TOWER	EACH	1.0
RELAMP HIGH MAST TOWER LUMINAIRE, 400 WATT	EACH	6.0

FILE NAME =	USER NAME = keithbr	DESIGNED -	REVISED -
68B52 - High Mast Lighting Maintenance	Final 7-19-13.dgn	DRAWN -	REVISED -
	PLOT SCALE = 164.7568' / in.	CHECKED -	REVISED -
	PLOT DATE = 7/19/2013	DATE -	REVISED -

**STATE OF ILLINOIS
DEPARTMENT OF TRANSPORTATION**

**LIGHT TOWER INSPECTION AND MAINTENANCE
I-74 AT**

SCALE: SHEET NO. 16 OF 62 SHEETS STA. TO STA.

F.A.P. RTE.	SECTION	COUNTY	TOTAL SHEETS	SHEET NO.
VAR	D4 HIGH MAST REPAIR 2014	VARIOUS	41	36
ILLINOIS FED. AID PROJECT			CONTRACT NO. 68B52	

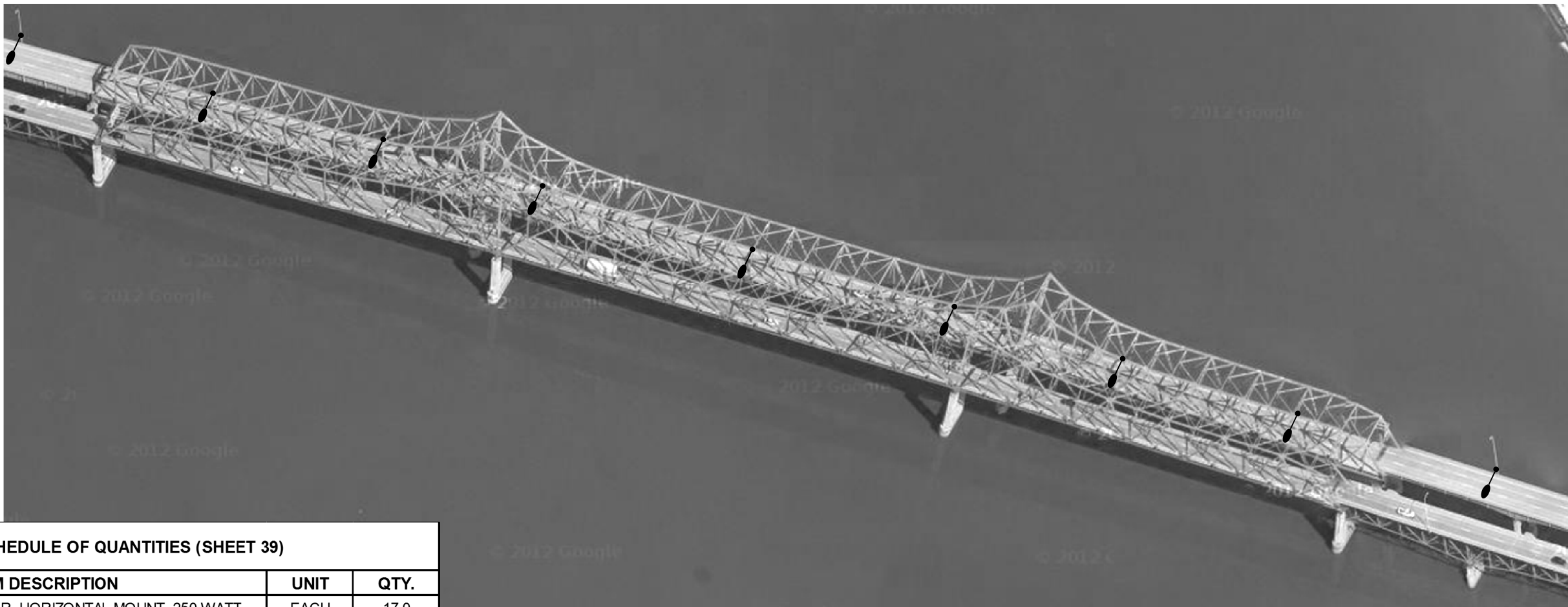


MARSHALL AND WOODFORD COUNTY HIGH MAST TOWER LOCATIONS						
HIGH MAST TOWER LOCATIONS				LUMINAIRE		MAINTAIN EX. LIGHTING CONTROLLER
ROADWAY	COUNTY	LOCATION	HEIGHT (FT)	QUANTITY	WATTAGE/VOLTAGE	
I-39	MARSHALL	IL 17 INTERCHANGE	80	4	400W/240V	1
I-39	MARSHALL	IL 17 INTERCHANGE	80	4	400W/240V	
I-39	MARSHALL	IL 17 INTERCHANGE	80	4	400W/240V	
I-39	MARSHALL	IL 17 INTERCHANGE	80	4	400W/240V	
I-39	WOODFORD	IL 116 INTERCHANGE	80	4	400W/240V	1
I-39	WOODFORD	IL 116 INTERCHANGE	80	4	400W/240V	
I-39	WOODFORD	IL 116 INTERCHANGE	80	4	400W/240V	
I-39	WOODFORD	IL 116 INTERCHANGE	80	4	400W/240V	
I-39	WOODFORD	MINONK INTERCHANGE	80	4	400W/240V	1
I-39	WOODFORD	MINONK INTERCHANGE	80	4	400W/240V	
I-39	WOODFORD	MINONK INTERCHANGE	80	4	400W/240V	
I-39	WOODFORD	MINONK INTERCHANGE	80	4	400W/240V	
I-74	WOODFORD	EB MACKINAW DELLS REST AREA	80	4	400W/240V	
I-74	WOODFORD	EB MACKINAW DELLS REST AREA	80	4	400W/240V	
I-74	WOODFORD	WB MACKINAW DELLS REST AREA	80	8	400W/240V	

SCHEDULE OF QUANTITIES (SHEET 37)		
ITEM DESCRIPTION	UNIT	QTY.
INSPECT HIGH MAST LIGHTING TOWER	EACH	15.0
RELAMP HIGH MAST TOWER LUMINAIRE, 400 WATT	EACH	64.0
REPLACE HIGH MAST LUMINAIRE BALLAST ASSEMBLY, 400 WATT	EACH	7.0
MAINTAIN EXISTING LIGHTING CONTROLLER	EACH	3.0
** HIGH MAST LUMINAIRE LOCATIONS WILL VARY DEPENDING ON SERVICE NEEDS		

LED REPLACEMENT LOCATIONS	SOLID INDICATIONS			ARROW INDICATIONS				PEDESTRIAN INDICATIONS			SIGNAL HEADS	
	RED	YELLOW	GREEN	RED	YELLOW	GREEN	YELLOW /GREEN	12" WALKING MAN/HAND	12" COUNTDOWN TIMER	16" WALKING MAN/HAND WITH TIMER	SH LED 1F 5S BM	SH LED 1F 5S BM
CREVE COEUR												
IL 29 (MAIN) & I-474 RAMPS B & C	9	9	9									
IL 29 (MAIN) & I-474 RAMPS A & D	9	9	9									
EAST PEORIA												
IL 8 (CAMP) & WASHINGTON	9	9	9	2	5	5				4		
IL 116 (MAIN) & I-74 WB RAMPS	13	13	9		2	6						
IL 116 (MAIN) & I-74 EB RAMPS	7	7	5	2	3	5						
IL 116 (MAIN) & IL 8 (CAMP)	16	16	16	4	8	8	3	6	6		1	2
I-74 RAMPS (I-3 & I-4) & CAMP	7	7	4			4						
MORTON												
IL 98 (BIRCHWOOD) & I-155 RAMPS	6	6	6									
PEKIN												
IL 9/29 (MARGARET) & IL 29 (THIRD)	5	5	5							6		
IL 9/29 (ANN ELIZA) & IL 29 (THIRD)	5	5	4			1				6		
IL 9/29 (ANN ELIZA) & IL 29 (FIFTH)	6	6	6					8	8			
IL 98 & PARKWAY	12	12	8		3	7						
TAZEWELL COUNTY												
US 24 & GRANGE	8	8	8									
CUMMINS	10	10	10	4	4	4						
TOTALS	122	122	108	12	25	40	3	14	14	16	1	2

SCHEDULE OF QUANTITIES (SHEET 38)		
ITEM DESCRIPTION	UNIT	QTY.
LED SIGNAL FACE RETROFIT, RED BALL	EACH	122.0
LED SIGNAL FACE RETROFIT, YELLOW BALL	EACH	122.0
LED SIGNAL FACE RETROFIT, GREEN BALL	EACH	108.0
LED SIGNAL FACE RETROFIT, RED ARROW	EACH	12.0
LED SIGNAL FACE RETROFIT, YELLOW ARROW	EACH	25.0
LED SIGNAL FACE RETROFIT, GREEN ARROW	EACH	40.0
LED SIGNAL FACE RETROFIT, YEL/GRN DUAL MODE ARROW	EACH	3.0
LED SIGNAL FACE RETROFIT, 12" WALKING MAN/HAND	EACH	14.0
LED SIGNAL FACE RETROFIT, 12" COUNTDOWN TIMER	EACH	14.0
LED SIGNAL FACE RETROFIT, 16" WALKING M/H WITH CD TIMER	EACH	16.0



SCHEDULE OF QUANTITIES (SHEET 39)		
ITEM DESCRIPTION	UNIT	QTY.
LUMINAIRE, SODIUM VAPOR, HORIZONTAL MOUNT, 250 WATT	EACH	17.0

FILE NAME =	USER NAME = keithbr	DESIGNED -	REVISED -
68B52 - High Mast Lighting Maintenance	Final 7-19-13.dgn	DRAWN -	REVISED -
	PLOT SCALE = 164.7568' / in.	CHECKED -	REVISED -
	PLOT DATE = 7/19/2013	DATE -	REVISED -

**STATE OF ILLINOIS
DEPARTMENT OF TRANSPORTATION**

US 150 WB MCLUGGAGE BRIDGE LUMINAIRE REPLACEMENT

SCALE: SHEET NO. 16 OF 62 SHEETS STA. TO STA.

F.A.P. RTE.	SECTION	COUNTY	TOTAL SHEETS	SHEET NO.
VAR	D4 HIGH MAST REPAIR 2014	VARIOUS	41	39
ILLINOIS FED. AID PROJECT			CONTRACT NO. 68B52	



SCHEDULE OF QUANTITIES (SHEET 40)

ITEM DESCRIPTION	UNIT	QTY.
LUMINAIRE, SODIUM VAPOR, HORIZONTAL MOUNT, 250 WATT	EACH	5.0

FILE NAME =	USER NAME = keithbr	DESIGNED -	REVISED -
68B52 - High Mast Lighting Maintenance	Final 7-19-13.dgn	DRAWN -	REVISED -
	PLOT SCALE = 164.7568' / in.	CHECKED -	REVISED -
	PLOT DATE = 7/19/2013	DATE -	REVISED -

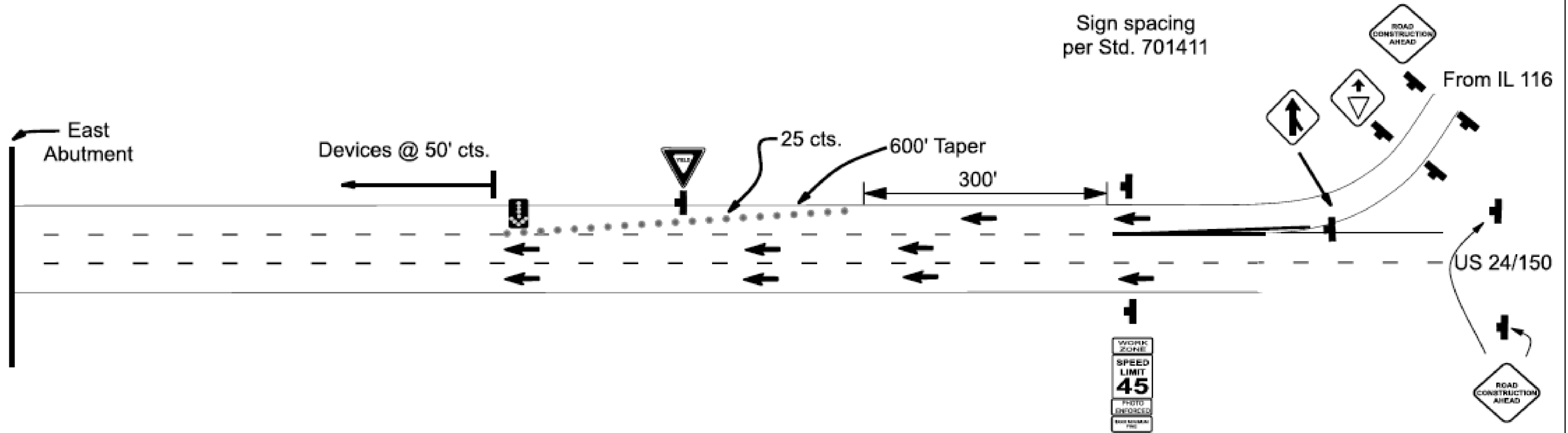
**STATE OF ILLINOIS
DEPARTMENT OF TRANSPORTATION**

US 150 WB MCLUGGAGE BRIDGE LUMINAIRE REPLACEMENT

SCALE: SHEET NO. 16 OF 62 SHEETS STA. TO STA.

F.A.P. RTE.	SECTION	COUNTY	TOTAL SHEETS	SHEET NO.
VAR	D4 HIGH MAST REPAIR 2014	VARIOUS	41	40
			CONTRACT NO. 68B52	
ILLINOIS FED. AID PROJECT				

WB McClugage Traffic Control



GENERAL NOTES:

When traffic control runs to west end ramp, one EXIT OPEN sign shall be placed 500' in advance.

Std. 701456 shall be used for west end ramp in conjunction with the above traffic control.

Two END WORK ZONE SPEED LIMIT signs shall be placed at the end of the work zone.

A flagger and sign shall be required .

FILE NAME =	USER NAME = kesthbr	DESIGNED -	REVISED -	STATE OF ILLINOIS DEPARTMENT OF TRANSPORTATION	US 150 WB MCLUGGAGE BRIDGE LUMINAIRE REPLACEMENT TRAFFIC CONTROL AND PROTECTION (SPECIAL) DETAIL	F.A.P. RTE.	SECTION	COUNTY	TOTAL SHEETS	SHEET NO.	
68B52 - High Mast Lighting Maintenance	Final 7-19-13.dgn	DRAWN -	REVISED -			VAR	D4 HIGH MAST REPAIR 2014	VARIOUS	41	41	
	PLOT SCALE = 1/4" = 1'-0"	CHECKED -	REVISED -			CONTRACT NO. 68B52					
	PLOT DATE = 7/19/2013	DATE -	REVISED -			ILLINOIS FED. AID PROJECT					
					SCALE:	SHEET NO. 16 OF 62 SHEETS	STA.	TO STA.			