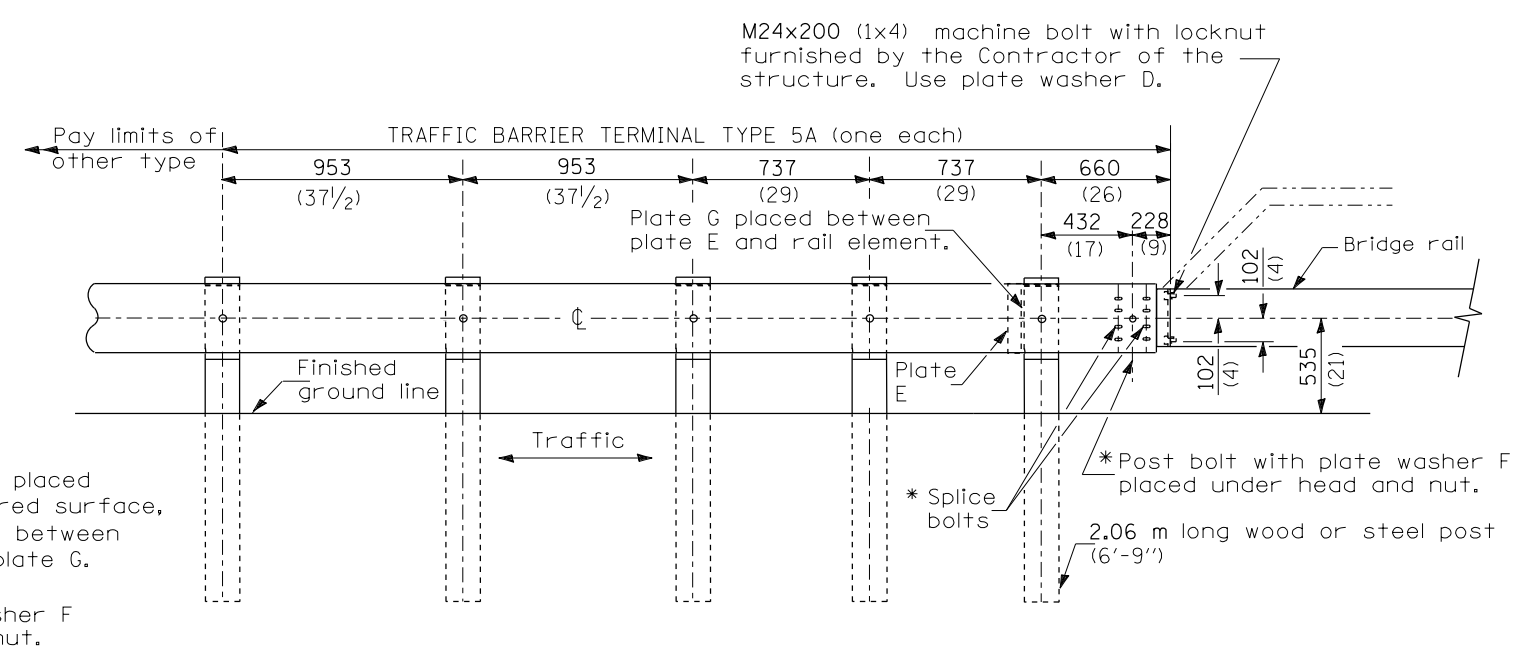


TYPE 5 - CONCRETE BRIDGE PARAPET



TYPE 5A - STEEL BRIDGE RAIL

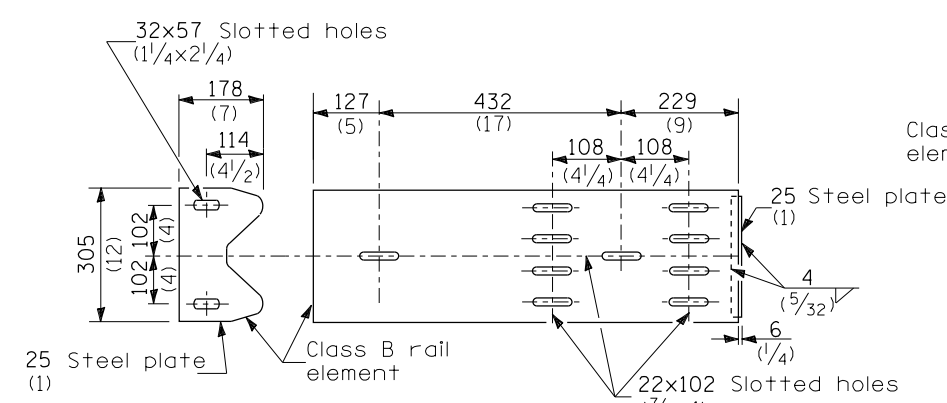


PLATE G

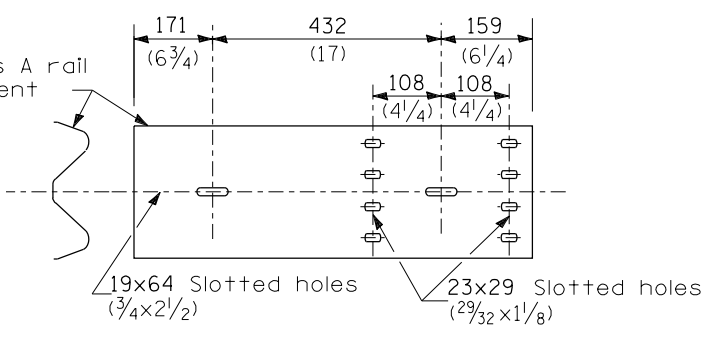
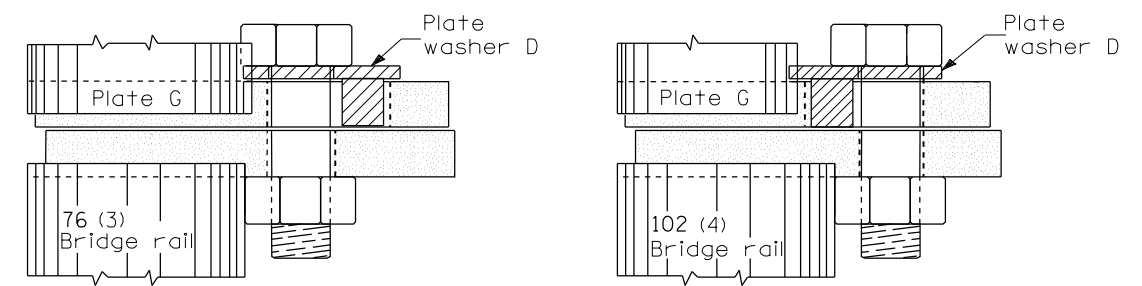


PLATE E



PLACEMENT OF PLATE WASHER D
(PLAN)

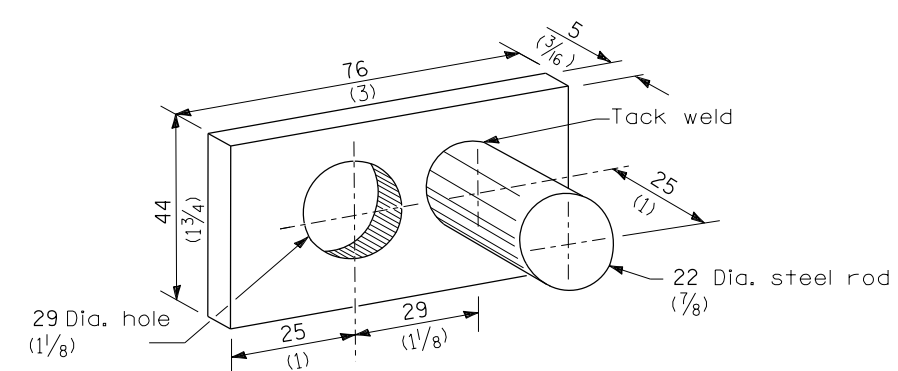
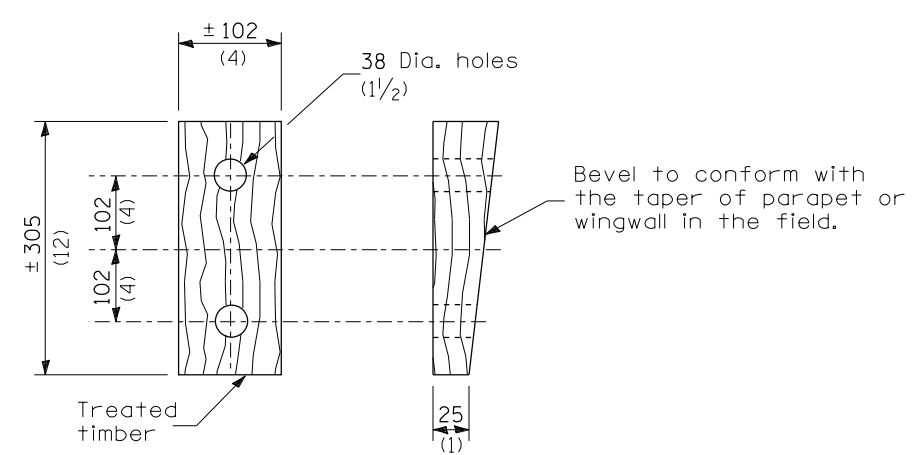


PLATE WASHER D



WEDGE M

GENERAL NOTES

- Install plate washer D so that the 25 mm (1") projection fills the remainder of the slotted holes in the 25 mm (1") end plate on plate G after the M24 (1") dia. bolts are in place.
- * Bolts shall be provided with locknut or double nut and shall be tightened only to a point that will allow plate G to be free to move when an expansion joint exists below the connector.
- See Standard 630001 for details of guardrail not shown.
- All dimensions are in millimeters (inches) unless otherwise shown.

FILE NAME =	USER NAME = sparksgw	DESIGNED -	REVISED -	STATE OF ILLINOIS DEPARTMENT OF TRANSPORTATION	PRE-MGS HIGHWAY STANDARD 631026-02 TRAFFIC BARRIER TERMINAL TYPE 5 & 5A EFFECTIVE 4-1-2006 (SHEET 1 OF 1)	F.A. R.T.E.	SECTION	COUNTY	TOTAL SHEETS	SHEET NO.	
Default	et:\pwork\pwork\sparksgw\10346074\0672020-Pre-MGS Highway Standard 631026-02.dgn	DRAWN -	REVISED -			VAR	.	.	17	13	
	PLOT SCALE = 26.0000' / in.	CHECKED -	REVISED -			CONTRACT NO. 72G20					
	PLOT DATE = Jun-28-2013 11:41:25AM	DATE -	REVISED -			ILLINOIS FED. AID PROJECT					

SCALE: SHEET OF SHEETS STA. TO STA. * D6 CABLE/GUARDRAIL 2014