

F.A. RTE.	SECTION	COUNTY	TOTAL SHEETS	SHEET NO.
VAR	*	*	17	1
ILLINOIS			CONTRACT NO. 72G20	
D6 CABLE/GUARDRAIL 2014				

STATE OF ILLINOIS  
DEPARTMENT OF TRANSPORTATION  
DIVISION OF HIGHWAYS

**PROPOSED  
HIGHWAY PLANS**

VARIOUS ROUTES  
SECTION D6 CABLE /GUARDRAIL 2014  
SAFETY ITEM REPAIR  
VARIOUS COUNTIES IN D6

C-96-056-13

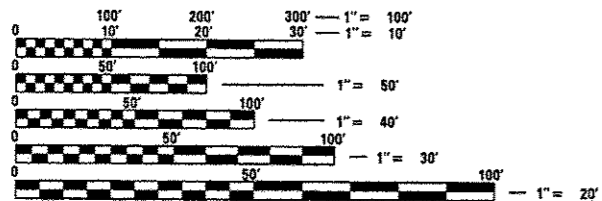
INDEX OF SHEETS

- 1 COVERSHEET
- 2 GENERAL NOTES
- 3-5 SUMMARY OF QUANTITIES
- 6-16 PRE-MGS HIGHWAY STANDARDS
- 17 CABLE GUARD MARKER DETAIL

FOR LIST OF STANDARDS, SEE SHEET NO. 2

NOTE:

SECTION D6 CABLE /GUARDRAIL 2014 CONSISTS OF REPAIR OF DAMAGED GUARDRAIL AND OTHER ITEM AS DIRECTED BY THE ENGINEER ON VARIOUS ROUTES IN IDOT DISTRICT SIX UNDER STATE JURISDICTION

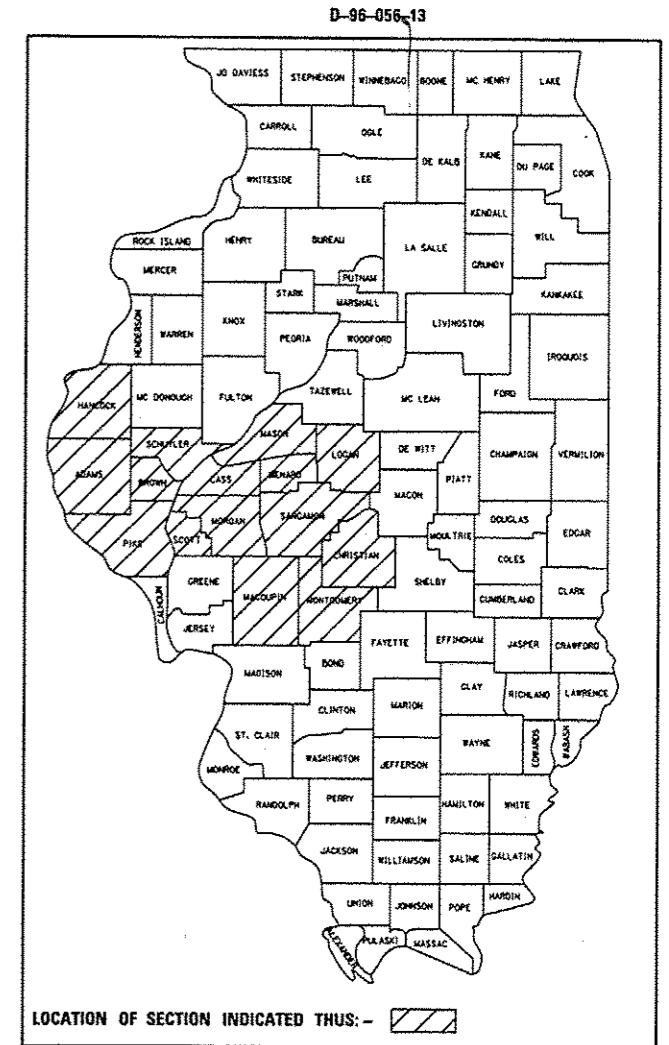
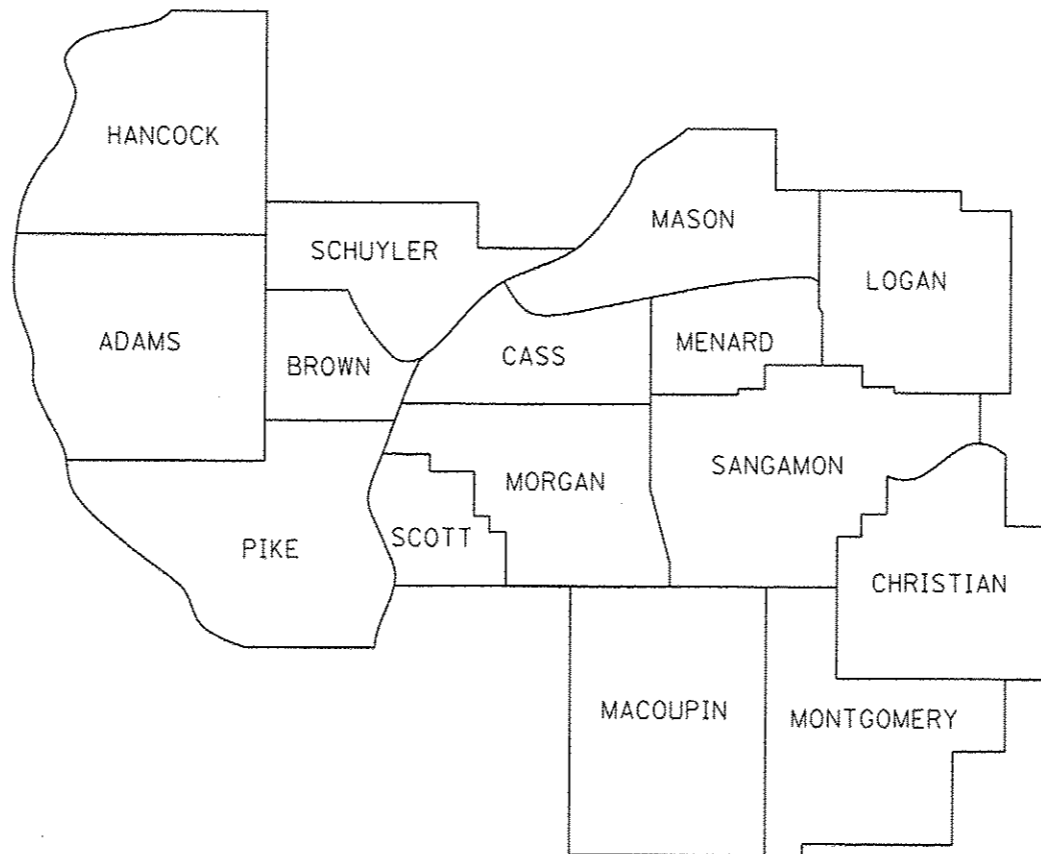


FULL SIZE PLANS HAVE BEEN PREPARED USING STANDARD ENGINEERING SCALES. REDUCED SIZED PLANS WILL NOT CONFORM TO STANDARD SCALES. IN MAKING MEASUREMENTS ON REDUCED PLANS, THE ABOVE SCALES MAY BE USED.

J.U.L.I.E.  
JOINT UTILITY LOCATION INFORMATION FOR EXCAVATION  
1-800-892-0123  
OR 811

SENIOR TEAM ENGINEER VINCE MADONIA 217-785-9046  
TEAM ENGINEER JAY EDWARDS 217-785-5321

CONTRACT NO. 72G20



STATE OF ILLINOIS  
DEPARTMENT OF TRANSPORTATION  
DIVISION OF HIGHWAYS

SUBMITTED June 25 2013  
Raja Z. Datta  
DEPUTY DIRECTOR OF HIGHWAYS, REGION ENGINEER

Aug 16 2013  
John D. Baranzelli, P.E.  
ENGINEER OF DESIGN AND ENVIRONMENT

Aug 16 2013  
Orren Osman, P.E.  
DIRECTOR OF HIGHWAYS, CHIEF ENGINEER

PRINTED BY THE AUTHORITY  
OF THE STATE OF ILLINOIS

**HIGHWAY STANDARDS**

STANDARD NO.	TITLE
630001-10	STEEL PLATE BEAM GUARDRAIL
630301-06	SHOULDER WIDENING FOR TYPE 1 (SPECIAL) GUARDRAIL TERMINALS
631011-09	TRAFFIC BARRIER TERMINAL, TYPE 2
631026-05	TRAFFIC BARRIER TERMINAL, TYPE 5
631031-11	TRAFFIC BARRIER TERMINAL, TYPE 6
635006-03	REFLECTOR AND TERMINAL MARKER PLACEMENT
643001-01	SAND MODULE IMPACT ATTENUATORS
664001-02	CHAIN LINK FENCE
665001-02	WOVEN WIRE FENCE
701001-02	OFF-ROAD OPERATIONS, 2L, 2W, MORE THAN 15' (4.5 M) AWAY
701006-04	OFF-ROAD OPERATIONS, 2L, 2W, 15' (4.5 M) TO 24" (600 MM) FROM PAVEMENT EDGE
701101-03	OFF-ROAD OPERATIONS, MULTILANE, 15' (4.5 M) TO 24" (600 MM) FROM PAVEMENT EDGE
701106-02	OFF-ROAD OPERATIONS, MULTILANE, MORE THAN 15' (4.5 M) AWAY
701201-04	LANE CLOSURE, 2L, 2W, DAY ONLY, FOR SPEEDS > 45 MPH
701301-04	LANE CLOSURE, 2L, 2W, SHORT TIME OPERATIONS
701400-06	APPROACH TO LANE CLOSURE, FREEWAY/EXPRESSWAY
701406-06	LANE CLOSURE, FREEWAY/EXPRESSWAY, DAY OPERATIONS ONLY
701411-08	LANE CLOSURE, MULTILANE, AT ENTRANCE OR EXIT RAMP, FOR SPEEDS > 45 MPH
701421-05	LANE CLOSURE, MULTILANE, DAY OPERATIONS ONLY, FOR SPEEDS > 45 MPH TO 55 MPH
701422-05	LANE CLOSURE, MULTILANE, FOR SPEEDS > 45 MPH TO 55 MPH
701426-05	LANE CLOSURE, MULTILANE, INTERMITTENT OR MOVING OPERATION, FOR SPEEDS ≥ 45 MPH
701427-01	LANE CLOSURE, MULTILANE, INTERMITTENT OR MOVING OPERATION, FOR SPEEDS < 40 MPH
701456-02	PARTIAL EXIT RAMP CLOSURE FREEWAY/EXPRESSWAY
701501-06	URBAN LANE CLOSURE, 2L, 2W, UNDIVIDED
701502-05	URBAN LANE CLOSURE, 2L, 2W, WITH BIDIRECTIONAL LEFT TURN LANE
701601-08	URBAN LANE CLOSURE, MULTILANE, 1W OR 2W WITH NONTRAVERSABLE MEDIAN
701602-06	URBAN LANE CLOSURE, MULTILANE, 2W WITH BIDIRECTIONAL LEFT TURN LANE
701606-08	URBAN LANE CLOSURE, MULTILANE, 2W WITH MOUNTABLE MEDIAN
701701-08	URBAN LANE CLOSURE, MULTILANE INTERSECTION
701901-02	TRAFFIC CONTROL DEVICES

**GENERAL NOTES**

ALL DISTURBED AREAS CAUSED BY THE CONTRACTOR'S OPERATIONS SHALL BE GRADED AND SEEDED WITH CLASS 2 ROADSIDE MIXTURE AND FERTILIZED AS STATED IN SECTION 250 OF THE STANDARD SPECIFICATIONS. COST SHALL BE CONSIDERED INCLUDED IN THE UNIT COST OF THE WORK BEING PERFORMED.

REMOVAL OF DAMAGED IMPACT ATTENUATORS SHALL BE INCLUDED IN THE COST OF THE IMPACT ATTENUATOR BEING INSTALLED.

REMOVAL AND DISPOSAL OF DAMAGED FENCE SHALL BE INCLUDED IN THE COST OF THE FENCE BEING INSTALLED.

<b>DISTRICT SIX</b>	
EXAMINED <u>June 28</u>	20 <u>13</u>
<i>William Adams</i>	
OPERATIONS ENGINEER	
EXAMINED <u>JUNE 28</u>	20 <u>13</u>
<i>Jim [Signature]</i>	
PROJECT IMPLEMENTATION ENGINEER	
EXAMINED <u>June 27</u>	20 <u>13</u>
<u>2 RML</u>	
PROGRAM DEVELOPMENT ENGINEER	

CODE NO.	ITEM	UNIT	TOTAL QUANTITY	CONSTRUCTION CODE		
				REGULAR PROGRAM 6-00664-0200	MCHD 6-00664-9997	STATEWIDE HIGH-TENSION CABLE RAIL REPAIR 0-01844-6001
				ROADWAY 0021	ROADWAY 0021	ROADWAY 0021
				100% STATE	100% STATE	100% STATE
63000001	STEEL PLATE BEAM GUARDRAIL, TYPE A, 6 FOOT POSTS	FOOT	500	350	150	
63000003	STEEL PLATE BEAM GUARDRAIL, TYPE A, 9 FOOT POSTS	FOOT	250	200	50	
63100045	TRAFFIC BARRIER TERMINAL, TYPE 2	EACH	1		1	
63100070	TRAFFIC BARRIER TERMINAL, TYPE 5	EACH	1		1	
63100085	TRAFFIC BARRIER TERMINAL, TYPE 6	EACH	1		1	
63100167	TRAFFIC BARRIER TERMINAL, TYPE 1 (SPECIAL) TANGENT	EACH	12	5	7	
63100169	TRAFFIC BARRIER TERMINAL, TYPE 1 (SPECIAL) FLARED	EACH	1		1	
63200310	GUARDRAIL REMOVAL	FOOT	750	550	200	
64300450	IMPACT ATTENUATORS (NON-REDIRECTIVE), TEST LEVEL 3	EACH	1	1		
66400105	CHAIN LINK FENCE, 4'	FOOT	300	200	100	
66500105	WOVEN WIRE FENCE, 4'	FOOT	300	100	200	
67100100	MOBILIZATION	L SUM	1	0.3	0.4	0.3
70100420	TRAFFIC CONTROL AND PROTECTION, STANDARD 701411	EACH	3	1	2	
78200410	GUARDRAIL MARKERS, TYPE A	EACH	300	150	150	

14

FILE NAME :	USER NAME : sparkgr	DESIGNED -	REVISED -	<b>STATE OF ILLINOIS DEPARTMENT OF TRANSPORTATION</b>	<b>SUMMARY OF QUANTITIES</b>				F.A.*	SECTION	COUNTY	TOTAL	SHEET
ct:\pwork\pvidot\sparkgr\0346074\067	EG20-shr-500.dgn	DRAWN -	REVISED -						VAR			17	3
	PLOT SCALE : 100.0000' / in.	CHECKED -	REVISED -		SCALE:	SHEET	OF	SHEETS	STA.	TO	STA.	CONTRACT NO. 72G20	
Default	PLOT DATE : Jun-28-2013 11:40:08AM	DATE -	REVISED -		ILLINOIS FED. AID PROJECT								

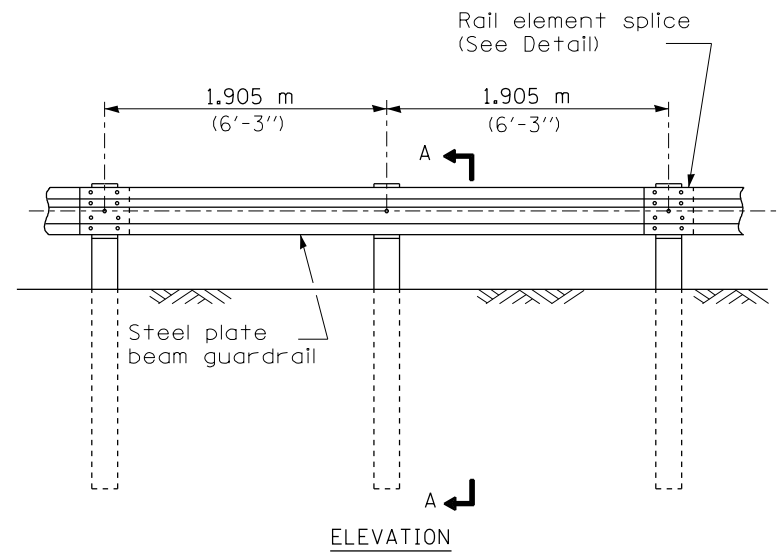
CODE NO.	ITEM	UNIT	TOTAL QUANTITY	CONSTRUCTION CODE		
				REGULAR PROGRAM 6-00664-0200	MCHD 6-00664-9997	STATEWIDE HIGH-TENSION CABLE RAIL REPAIR 0-01844-6001
				ROADWAY 0021	ROADWAY 0021	ROADWAY 0021
				100% STATE	100% STATE	100% STATE
78201000	TERMINAL MARKER - DIRECT APPLIED	EACH	32	15	17	
X0325231	CABLE GUARD MARKER	EACH	430		50	380
X0325899	REPAIR HIGH TENSION CABLE ( GIBRALTAR)	FOOT	850		200	650
X0325900	REPAIR HIGH TENSION BARRIER TERMINAL ( GIBRALTAR)	EACH	3		1	2
X0325901	REPAIR POSTS ( GIBRALTAR)	EACH	210		40	170
X0325902	REMOVE AND REPLACE POSTS ( GIBRALTAR)	EACH	70		20	50
X0327490	REPAIR HIGH TENSION CABLE ( NU-CABLE)	FOOT	425		100	325
X0327491	REPAIR POSTS ( NU-CABLE)	EACH	57		15	42
X0327492	REMOVE AND REPLACE POSTS ( NU-CABLE)	EACH	200		30	170
X0327493	REPAIR HIGH TENSION BARRIER TERMINAL ( NU-CABLE)	EACH	3		1	2
X6431220	REMOVE AND REPLACE IMPACT ATTENUATOR SAND MODULE	EACH	20	10	10	
X7011834	TRAFFIC CONTROL AND PROTECTION, CALL OUT WORK	EACH	17	8	9	
X7011836	TRAFFIC CONTROL AND PROTECTION, FREEWAY/EXPRESSWAY, CALL OUT WORK	EACH	34	12	9	13

32

FILE NAME *	USER NAME * sparksgw	DESIGNED -	REVISED -	<b>STATE OF ILLINOIS DEPARTMENT OF TRANSPORTATION</b>	<b>SUMMARY OF QUANTITIES</b>				F.A.*	SECTION	COUNTY	TOTAL	SHEET
c:\pwork\pwork\sparksgw\0346874\0672620-sh-500.dgn	72620-sh-500.dgn	DRAWN -	REVISED -						VAR	*	*	17	4
Default	PLOT SCALE * 100.0000 1/1 in.	CHECKED -	REVISED -		SCALE:	SHEET	OF	SHEETS	STA.	TO STA.	CONTRACT NO. 72620		
	PLOT DATE * Jun-20-2013 11:48:08AM	DATE -	REVISED -						ILLINOIS FED. AID PROJECT			* D6 CABLE/GUARDRAIL 2014	

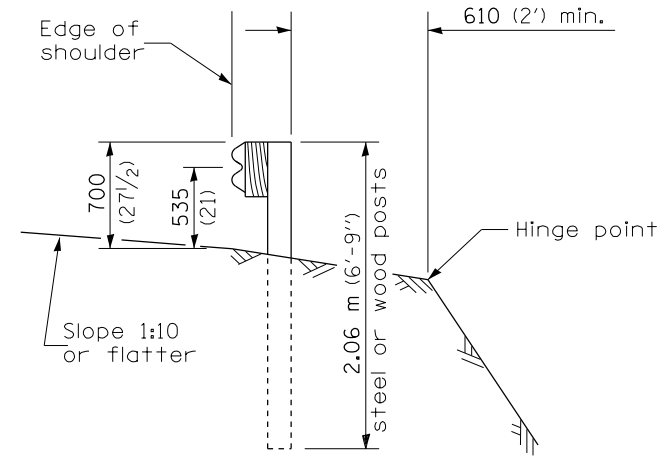
CODE NO.	ITEM	UNIT	TOTAL QUANTITY	CONSTRUCTION CODE		
				REGULAR PROGRAM 6-00664-0200	MCHD 6-00664-9997	STATEWIDE HIGH-TENSION CABLE RAIL REPAIR 0-01844-6001
				ROADWAY 0021	ROADWAY 0021	ROADWAY 0021
				100% STATE	100% STATE	100% STATE
Z0008759	CALL OUT	EACH	26	16	10	
Z0008760	EMERGENCY WORK CALL OUT	EACH	25	4	8	13
Z0029654	HIGH TENSION CABLE MEDIAN BARRIER TERMINALS	EACH	1			1
Z0052000	REPAIR STEEL PLATE BEAM GUARDRAIL, TYPE A	FOOT	750	500	250	
Z0052410	REPAIR TRAFFIC BARRIER TERMINAL, TYPE 1 SPECIAL (TANGENT)	EACH	12	7	5	
Z0052415	REPAIR TRAFFIC BARRIER TERMINAL, TYPE 1 SPECIAL (FLARED)	EACH	1		1	
Z0052600	REPAIR TRAFFIC BARRIER TERMINAL, TYPE 2	EACH	1		1	
Z0053000	REPAIR TRAFFIC BARRIER TERMINAL, TYPE 5	EACH	1		1	
Z0053200	REPAIR TRAFFIC BARRIER TERMINAL, TYPE 6	EACH	1		1	

9

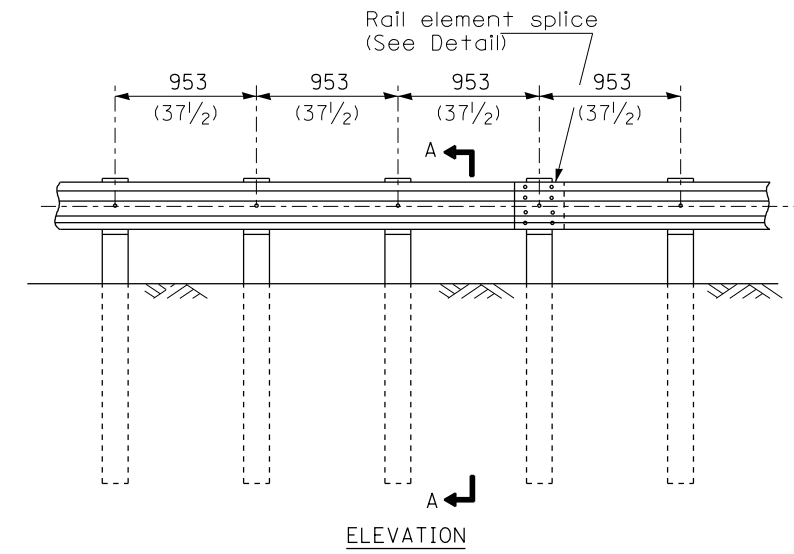


**TYPE A**

1.905 m (6'-3'') Typical post spacing

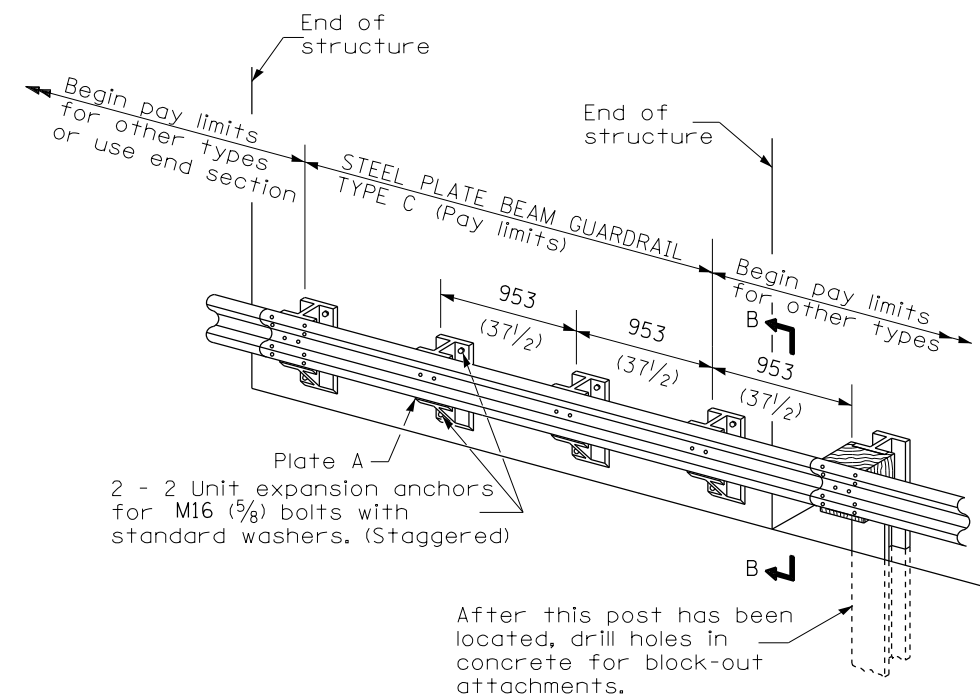


**SECTION A-A**



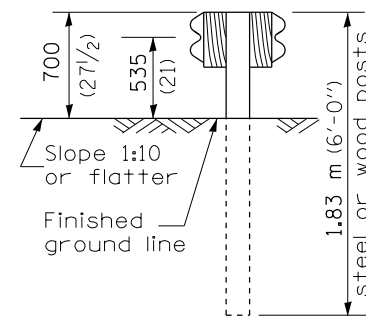
**TYPE B**

953 (37 1/2) Closed post spacing

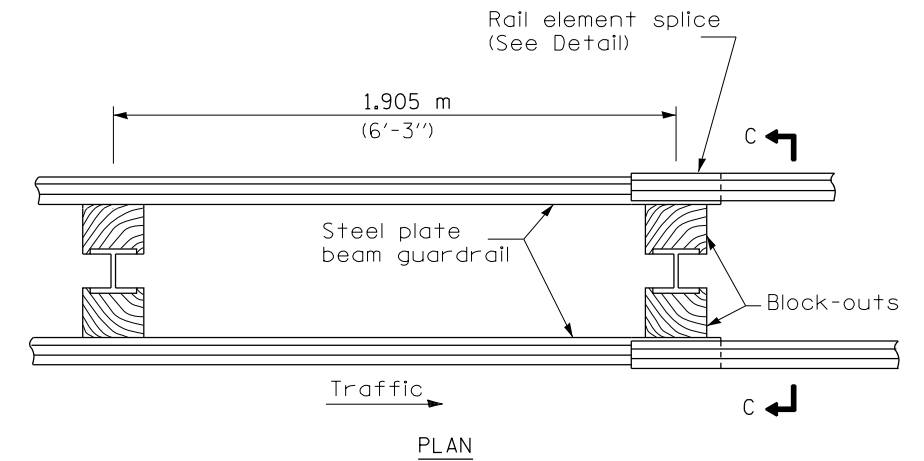


**TYPE C**

953 (37 1/2) Block-out spacing

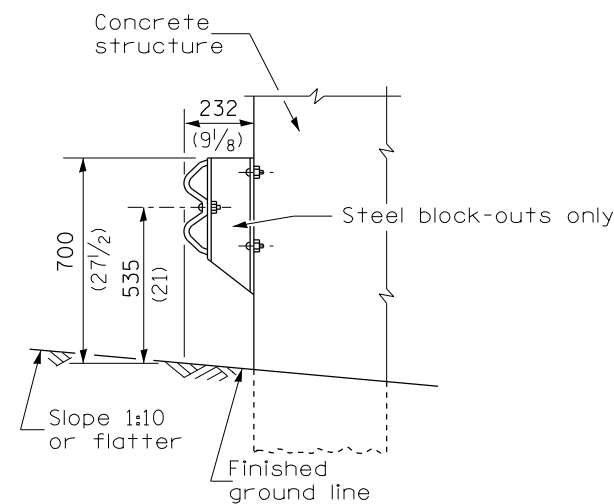


**SECTION C-C**



**TYPE D**

Double steel plate beam guardrail  
1.905 m (6'-3'') typical post spacing



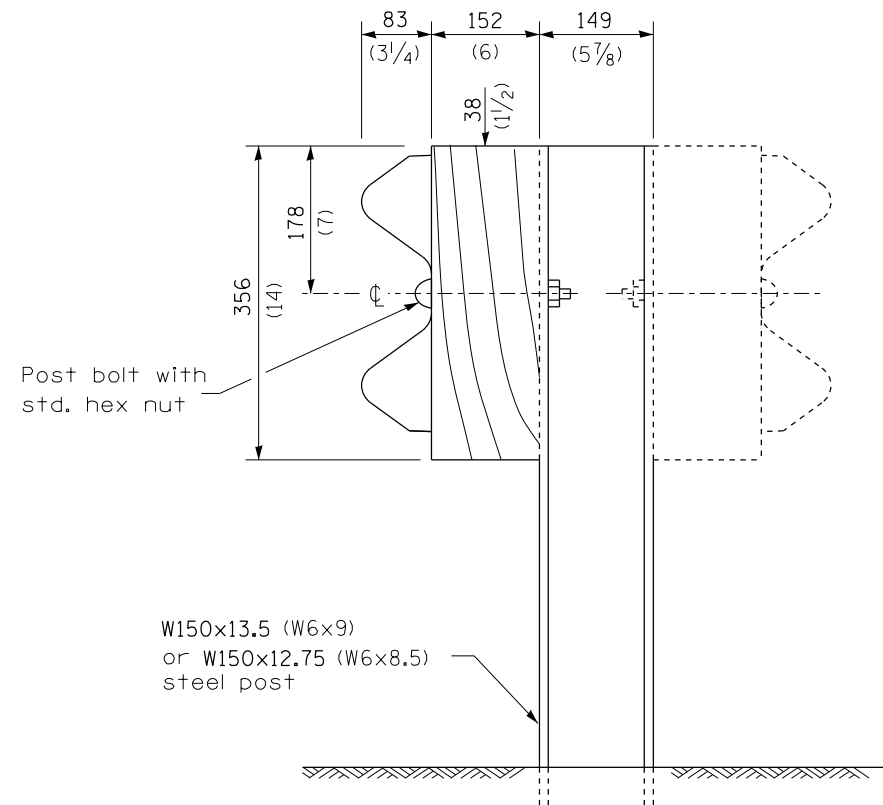
**SECTION B-B**

**GENERAL NOTES**

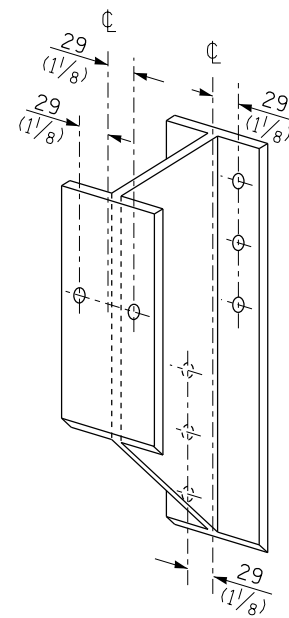
All slope ratios are expressed as units of vertical displacement to units of horizontal displacement (V:H).

All dimensions are in millimeters (inches) unless otherwise shown.

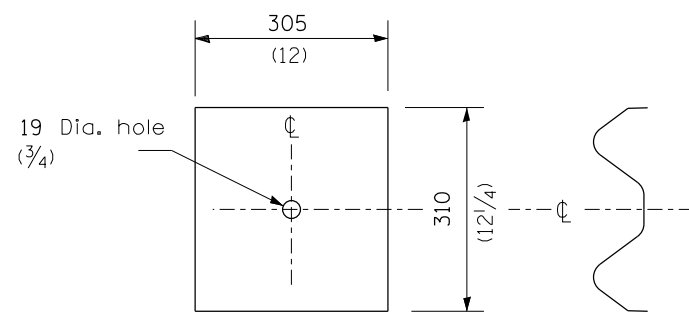
FILE NAME =	USER NAME = sparksgw	DESIGNED -	REVISED -	<b>STATE OF ILLINOIS DEPARTMENT OF TRANSPORTATION</b>	<b>PRE-MGS HIGHWAY STANDARD 630001-06 STEEL PLATE BEAM GUARDRAIL EFFECTIVE 4-1-06</b> (SHEET 1 OF 4)	F.A. RTE.	SECTION	COUNTY	TOTAL SHEETS	SHEET NO.	
Default	PLOT DATE = Jun-28-2013 11:41:19AM	DRAWN -	REVISED -			VAR	.	.	17	6	
		CHECKED -	REVISED -			CONTRACT NO. 72G20					
		DATE -	REVISED -			ILLINOIS FED. AID PROJECT					



**STEEL POST CONSTRUCTION**



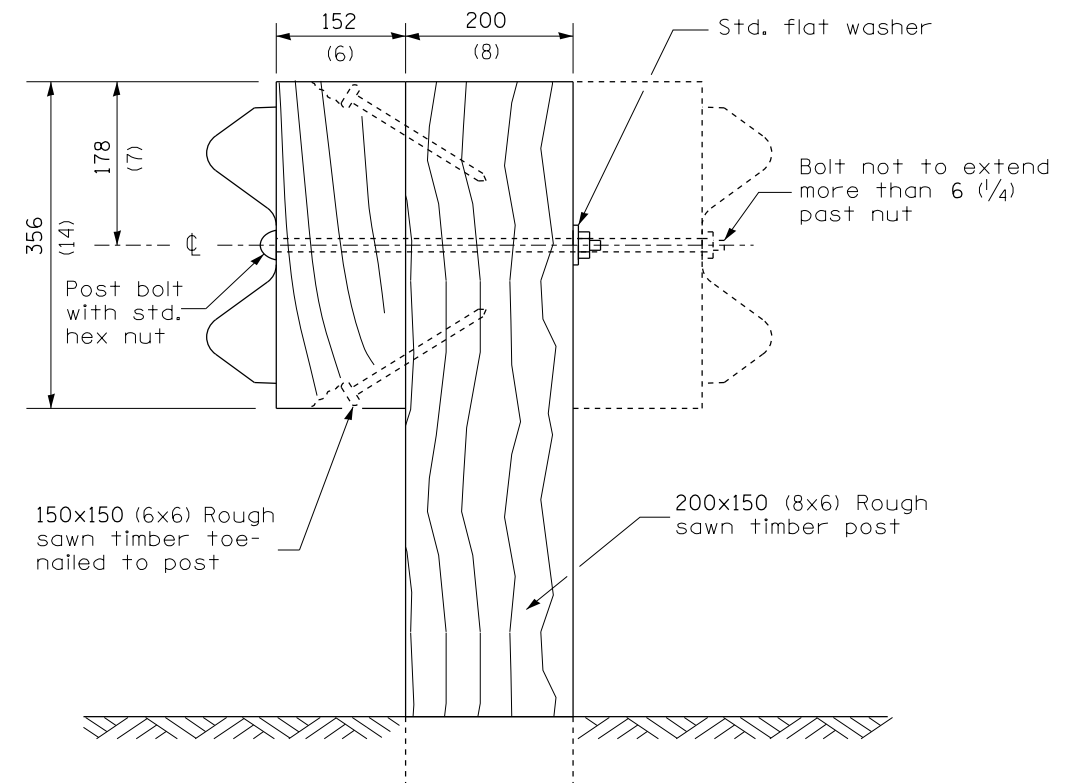
**STEEL BLOCK-OUT DETAIL**



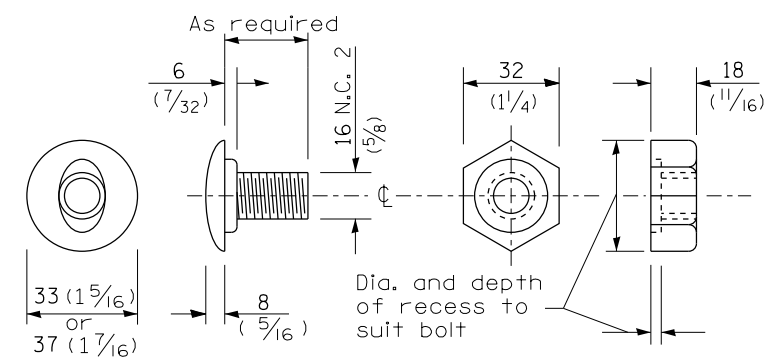
NOTE

Plate A shall be placed between rail element and block-out at non-splice mounting points only when steel block-outs are used.

**PLATE A**



**WOOD POST CONSTRUCTION**



**POST OR SPLICE BOLT & NUT**

FILE NAME =	USER NAME = sparksgw	DESIGNED -	REVISED -
c:\pwork\work\pwork\sparksgw\d0346074\0672G20-sh-630001-06_SteelPlateBeamGrd.dgn		DRAWN -	REVISED -
Default	PLOT SCALE = 26.0000' / in.	CHECKED -	REVISED -
	PLOT DATE = Jun-28-2013 11:41:20AM	DATE -	REVISED -

**STATE OF ILLINOIS  
DEPARTMENT OF TRANSPORTATION**

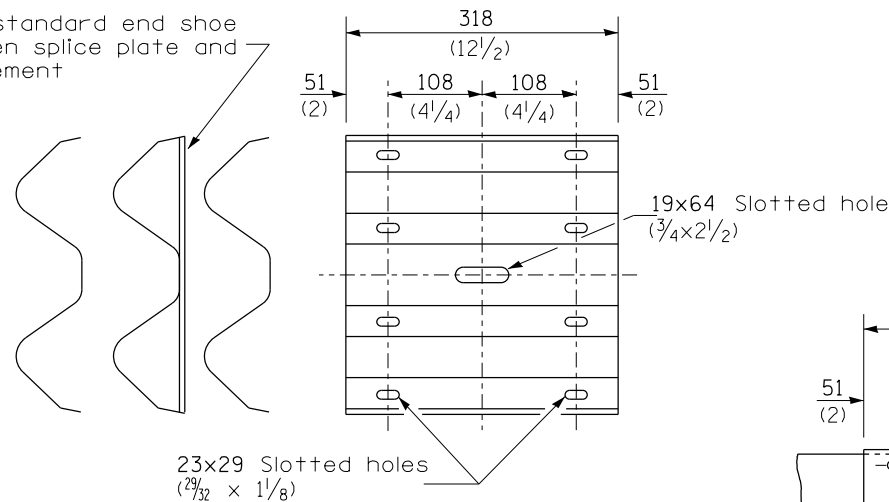
**PRE-MGS HIGHWAY STANDARD 630001-06  
STEEL PLATE BEAM GUARDRAIL  
EFFECTIVE 4-1-06**

(SHEET 2 OF 4)

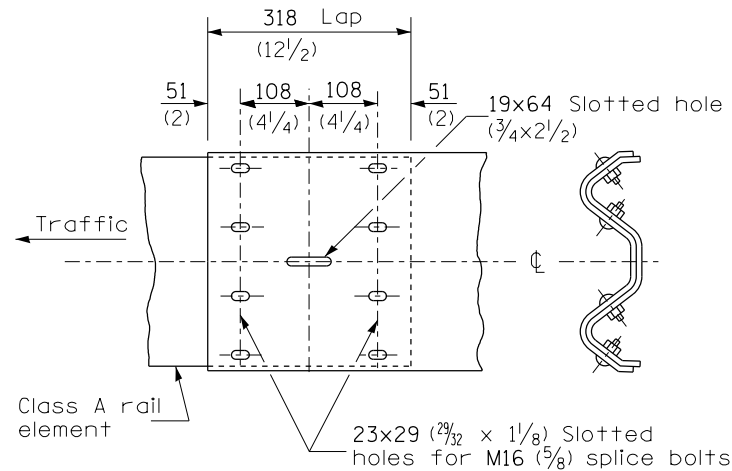
F.A. RTE.	SECTION	COUNTY	TOTAL SHEETS	SHEET NO.
VAR	.	.	17	7
			CONTRACT NO. 72G20	
ILLINOIS FED. AID PROJECT				

SCALE: SHEET OF SHEETS STA. TO STA.

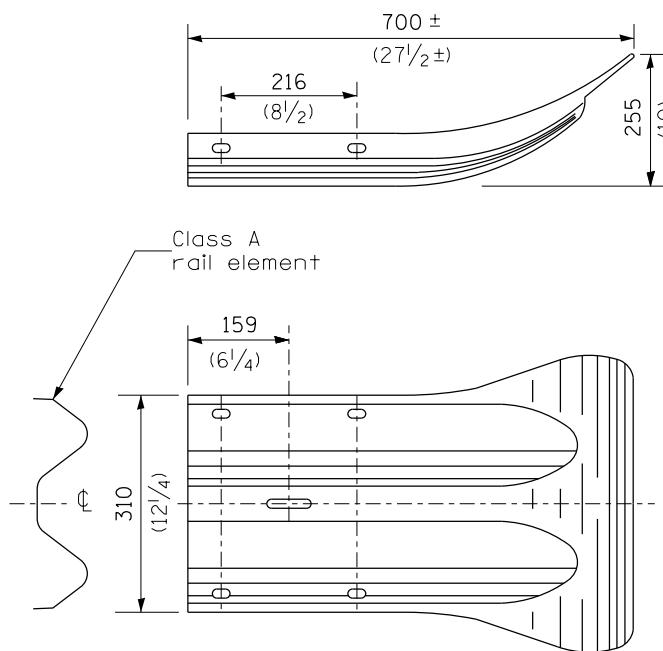
Place standard end shoe between splice plate and rail element



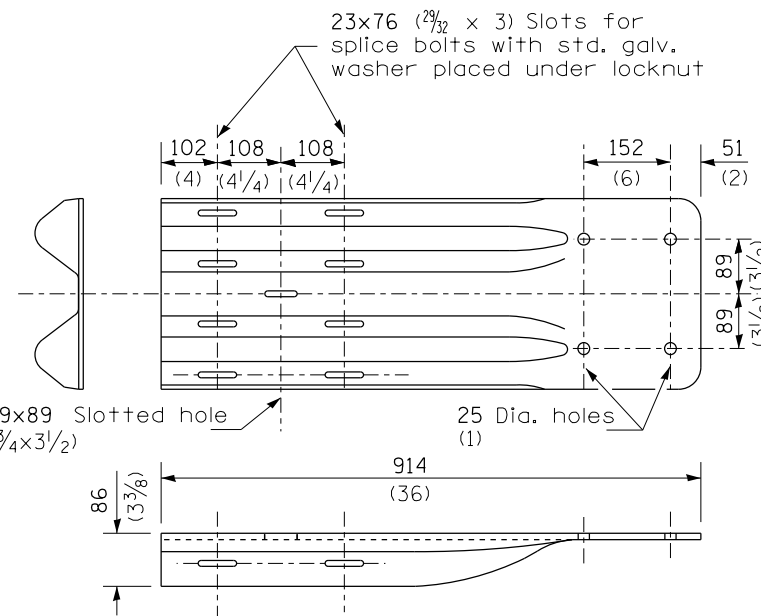
**SPLICE PLATE**



**RAIL ELEMENT SPLICE**



**END SECTION**



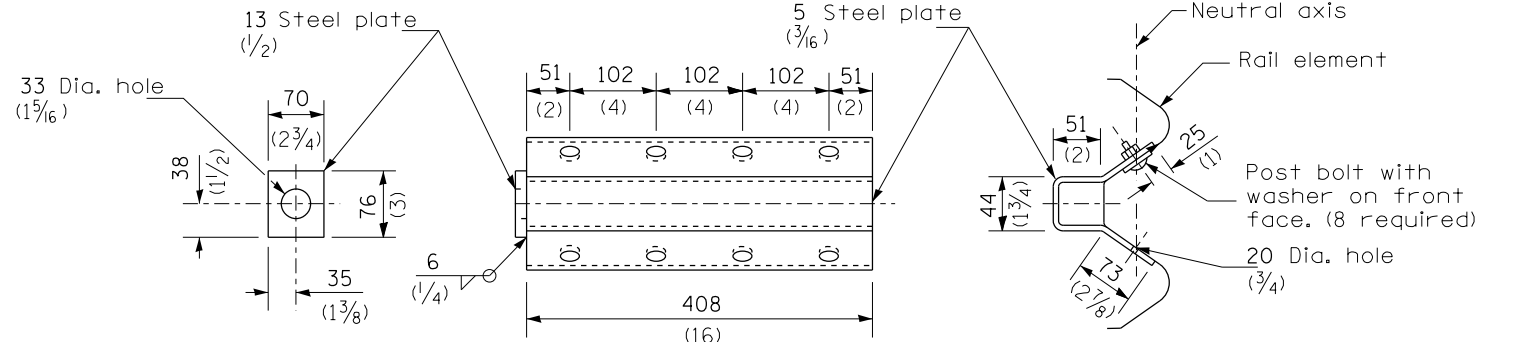
NOTE

When end shoe is attached to a bridge parapet which has an expansion joint, the bolts shall be provided with a locknut or double nut and shall be tightened only to a point that will allow guardrail movement.

The standard end shoe shall be attached to the concrete with pre-drilled or self-drilling anchor bolts. The anchor cone shall be set flush with the surface of the concrete.

Externally threaded studs protruding from the surface of the concrete will not be permitted.

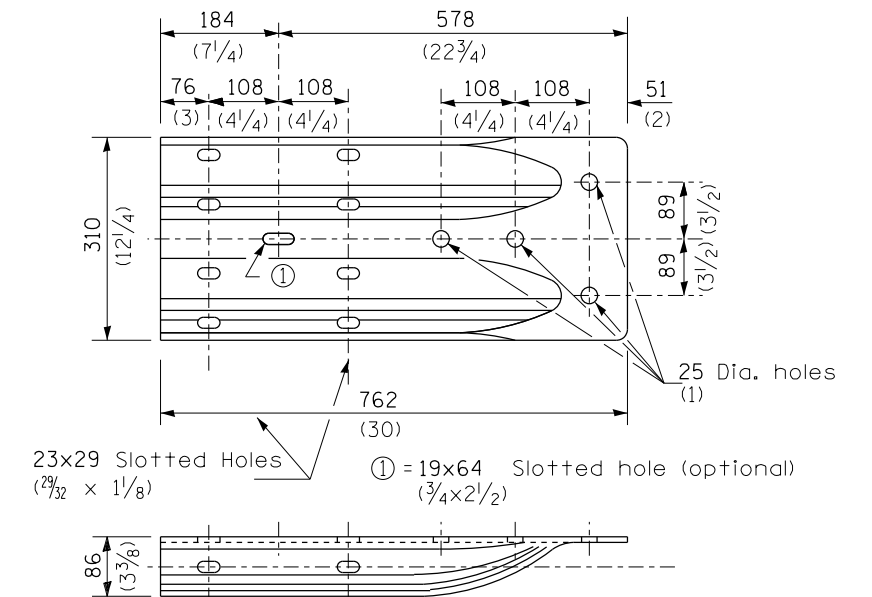
**END SHOE**



NOTE

Anchor plate T shall be used to attach cable assembly to guardrail when required on traffic barrier terminals.

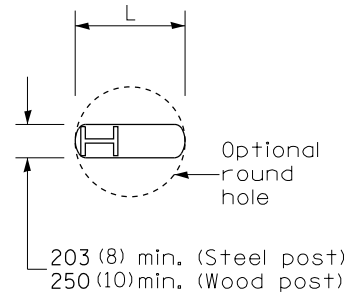
**ANCHOR PLATE T DETAILS**



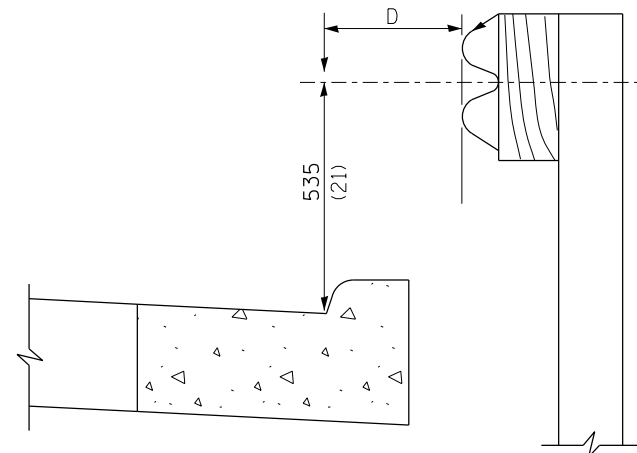
**ALTERNATE END SHOE**

FILE NAME =	USER NAME = sparksgw	DESIGNED -	REVISED -	<b>STATE OF ILLINOIS DEPARTMENT OF TRANSPORTATION</b>	<b>PRE-MGS HIGHWAY STANDARD 630001-06 STEEL PLATE BEAM GUARDRAIL EFFECTIVE 4-1-06</b>	F.A. R.E.	SECTION	COUNTY	TOTAL SHEETS	SHEET NO.	
Default	2020-sh-t-630001-06_SteelPlateBeamGuardrail.dgn	DRAWN -	REVISED -			VAR	.	.	17	8	
	PLOT SCALE = 26.0000' / in.	CHECKED -	REVISED -			SCALE: SHEET OF SHEETS STA. TO STA.					
	PLOT DATE = Jun-28-2013 11:41:20AM	DATE -	REVISED -			CONTRACT NO. 72G20					





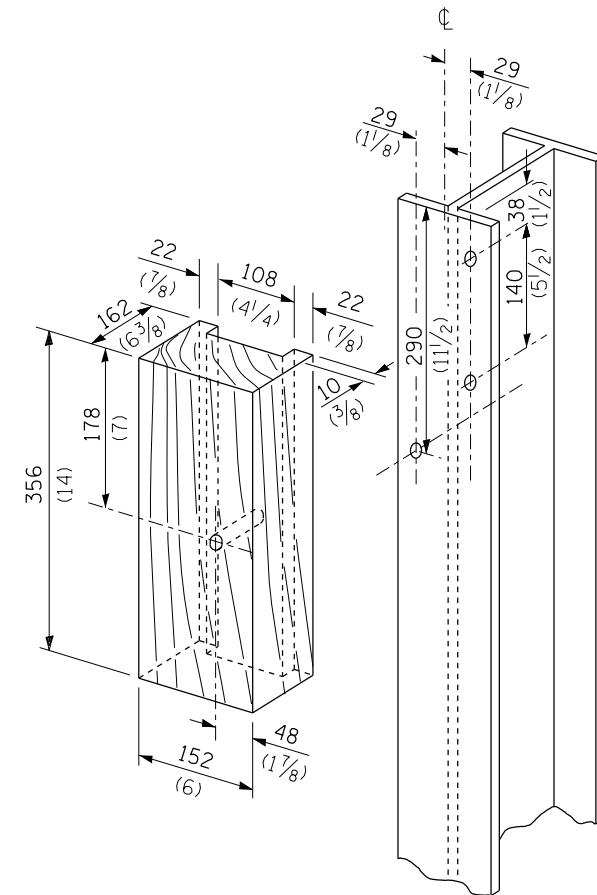
PLAN



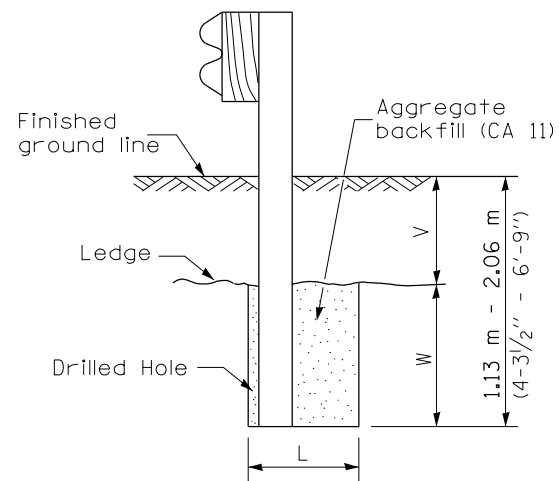
Note:  
If it is necessary for D to be more than 300 (12) and less than 3.0 m (10'-0") type M-5 (M-2) curb and gutter (Std. 606001) shall be used in front of and in advance of the guardrail.

GUARDRAIL PLACED BEHIND CURB

(D = 0 desirable to 300 (12) maximum)



WOOD BLOCK-OUT AND STEEL POST DETAILS

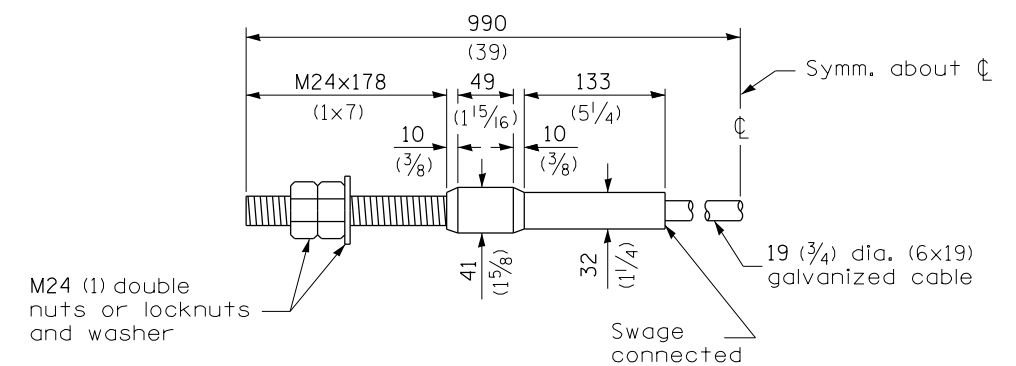


Note:  
Ledge line is top of rock ledge or hard slag fill.

ELEVATION

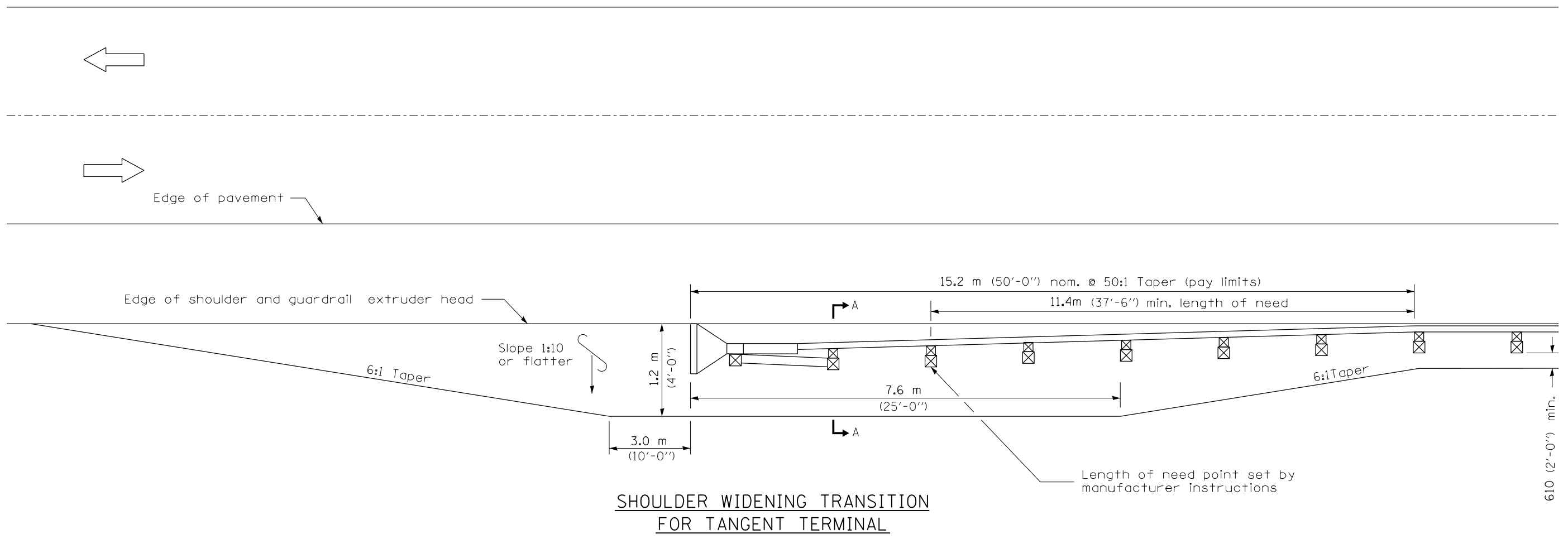
FOOTING FOR POST WHEN IMPERVIOUS MATERIAL IS ENCOUNTERED

V	W	L	
		Steel Post	Wood Post
0 - 460 (0 - 18)	610 (24)	530 (21)	580 (23)
>460 - 825 (>18 - 41.5)	305 (12)	203 (8)	250 (10)
>825 - 1.13 m (>41.5 - 53.5)	305 - 0 (12 - 0)	203 (8)	250 (10)

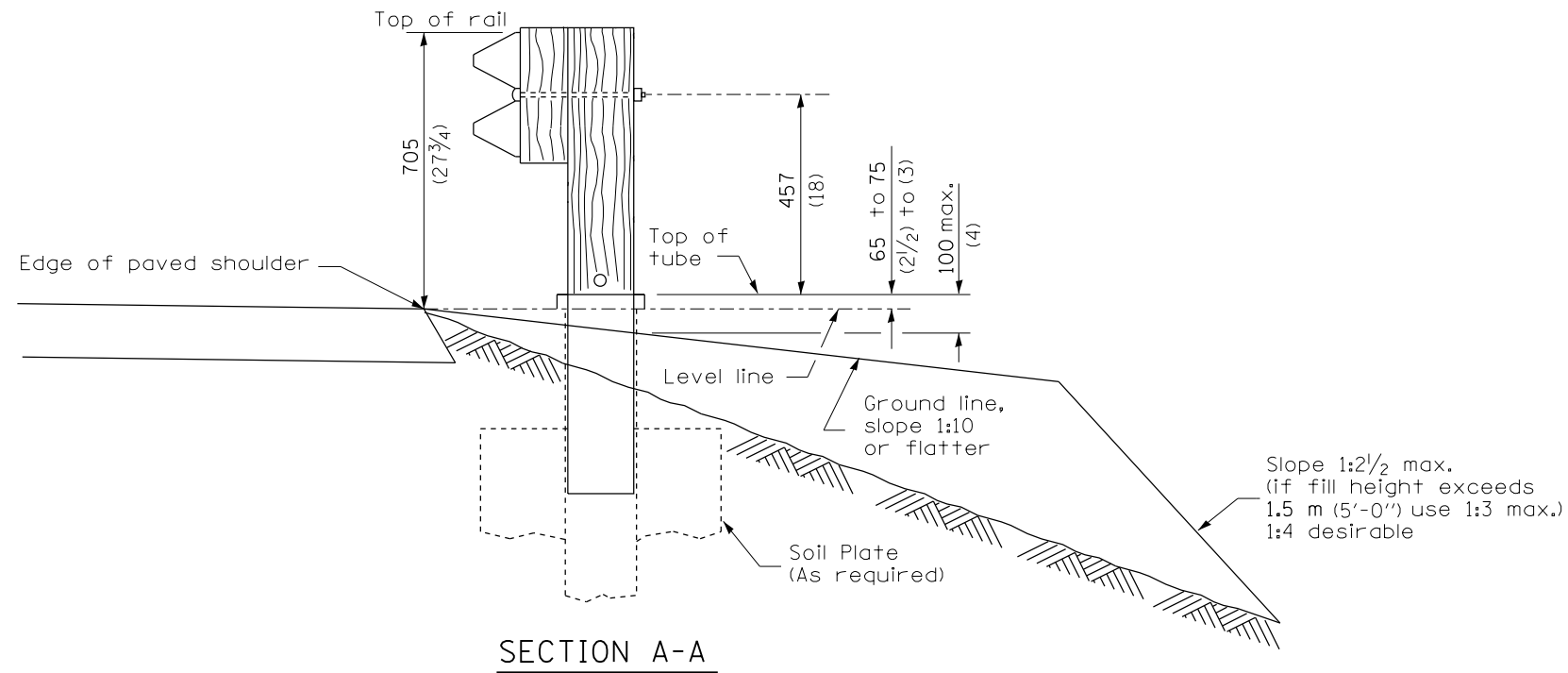


CABLE ASSEMBLY

(18,100 kg (40,000 lbs.) min. breaking strength)  
Tighten to taut tension.



**SHOULDER WIDENING TRANSITION  
FOR TANGENT TERMINAL**

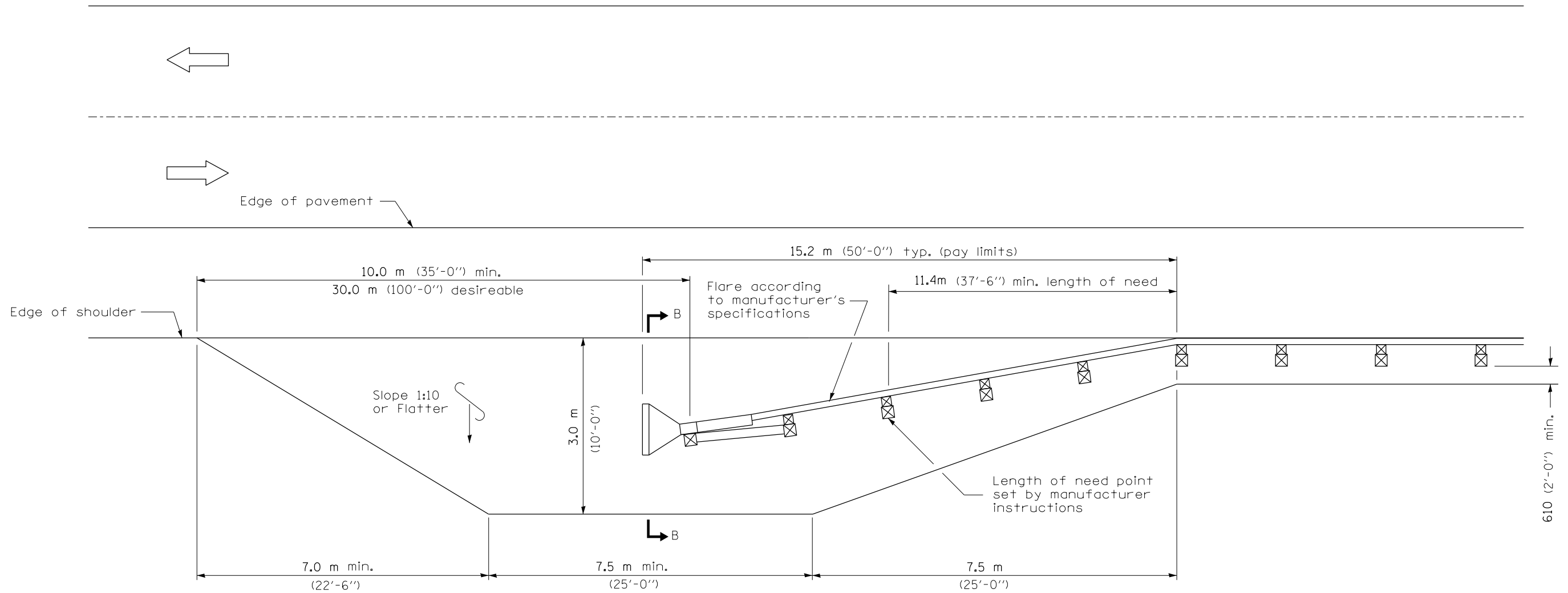


**SECTION A-A**

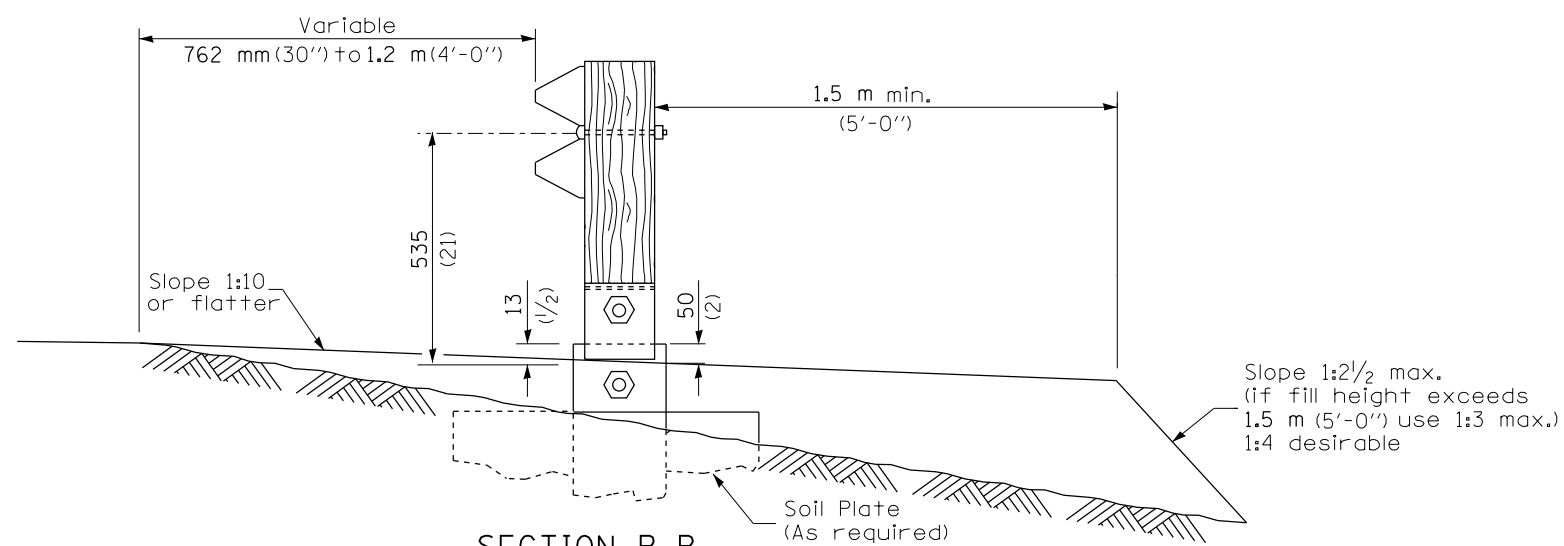
**GENERAL NOTES**

- 50:1 Taper required so the guardrail head will not encroach on the shoulder.
- All slope ratios are expressed as units of vertical displacement to units of horizontal displacement (V:H).
- All dimensions are in millimeters (inches) unless otherwise shown.

FILE NAME =	USER NAME = sparksgw	DESIGNED -	REVISED -	<b>STATE OF ILLINOIS DEPARTMENT OF TRANSPORTATION</b>	<b>PRE-MGS HIGHWAY STANDARD 630301-03 SHOULDER WID. FOR TYPE 1 (SPL) GUARDRAIL TERMINAL EFFECTIVE 4-1-06</b>				F.A. RTE.	SECTION	COUNTY	TOTAL SHEETS	SHEET NO.
Default	2020-Pre-MGS HWAY_Standard 630301-03.dgn	DRAWN -	REVISED -		SCALE:	SHEET	OF	SHEETS	STA.	TO	STA.	17	10
	PLOT SCALE = 26.0000' / in.	CHECKED -	REVISED -		(SHEET 1 OF 2)				CONTRACT NO. 72G20				
	PLOT DATE = Jun-28-2013 11:41:22AM	DATE -	REVISED -		ILLINOIS FED. AID PROJECT								



**SHOULDER WIDENING TRANSITION  
FOR FLARED TERMINAL**



**SECTION B-B**  
(End section omitted for clarity.)

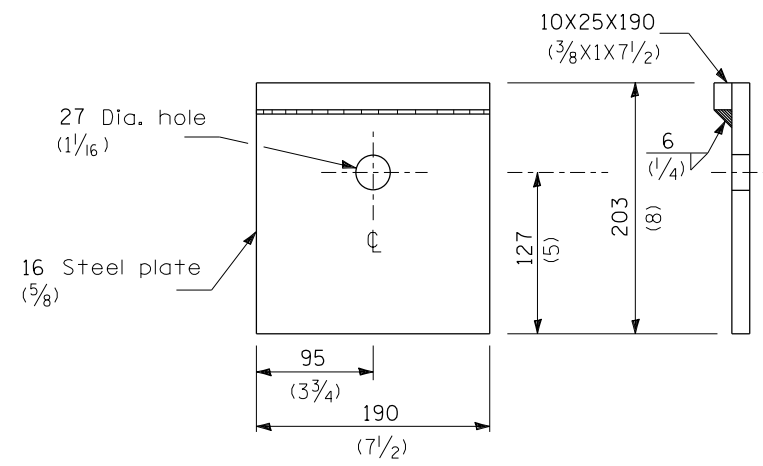
FILE NAME =	USER NAME = sparksgw	DESIGNED -	REVISED -
c:\pwork\pwork\sparksgw\0346074\06720-Pre-MGS HWAY_Standard 630301-03.dgn		DRAWN -	REVISED -
Default	PLOT SCALE = 26.0000' / in.	CHECKED -	REVISED -
	PLOT DATE = Jun-28-2013 11:41:22AM	DATE -	REVISED -

**STATE OF ILLINOIS  
DEPARTMENT OF TRANSPORTATION**

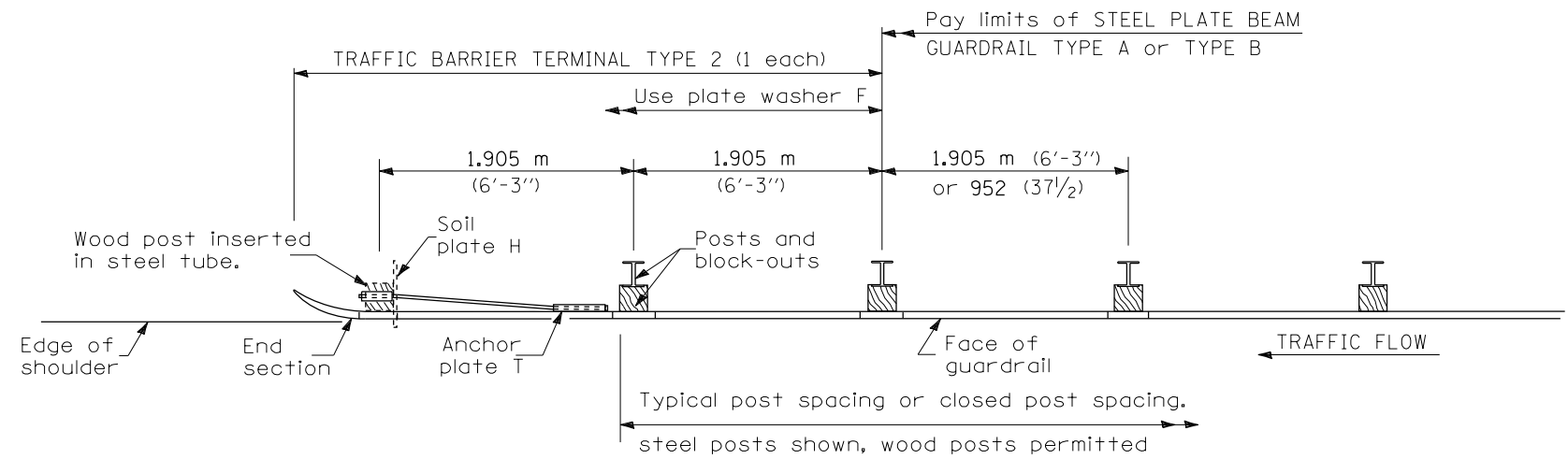
**PRE-MGS HIGHWAY STANDARD 630301-03  
SHOULDER WID. FOR TYPE 1 (SPL) GUARDRAIL TERMINAL  
EFFECTIVE 4-1-06**

SCALE: SHEET OF SHEETS STA. TO STA.

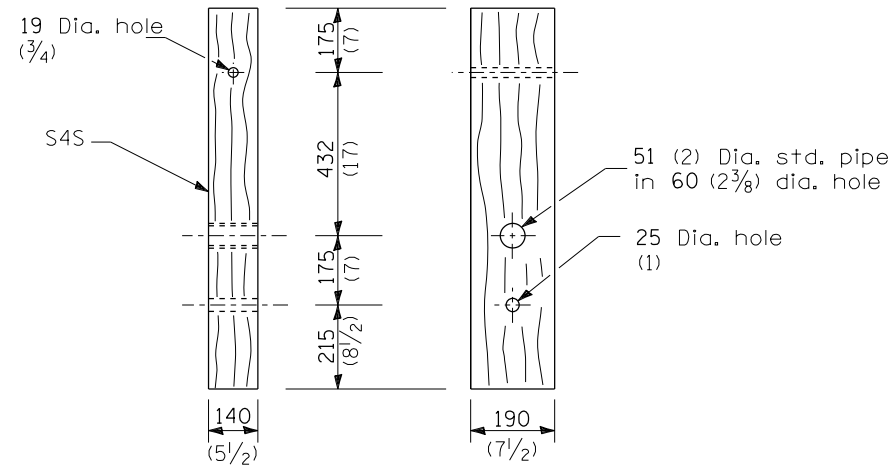
F.A. RTE.	SECTION	COUNTY	TOTAL SHEETS	SHEET NO.
			17	11
			CONTRACT NO. 72G20	



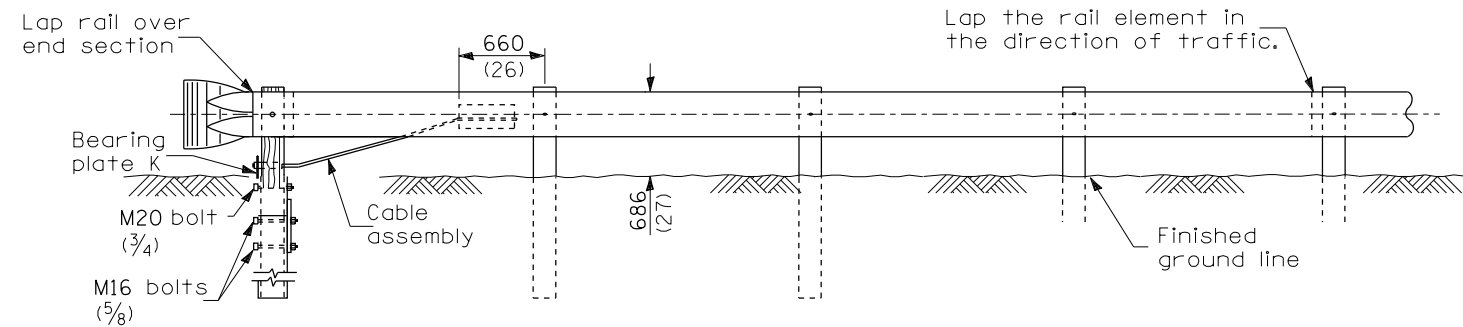
**BEARING PLATE K**



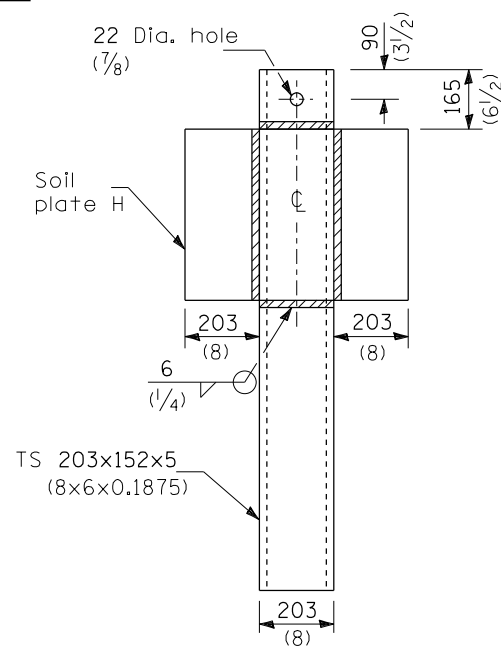
**PLAN**



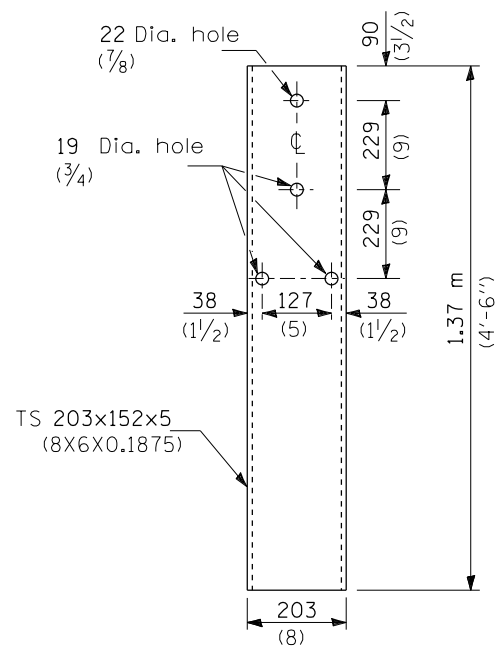
**WOOD POST**



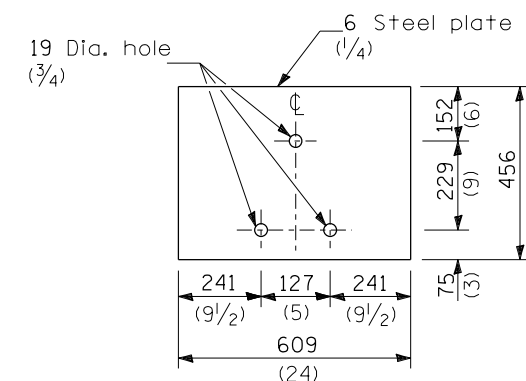
**ELEVATION**



**ALTERNATE SOIL PLATE CONNECTION**



**STEEL TUBE**



**SOIL PLATE H**

**GENERAL NOTES**

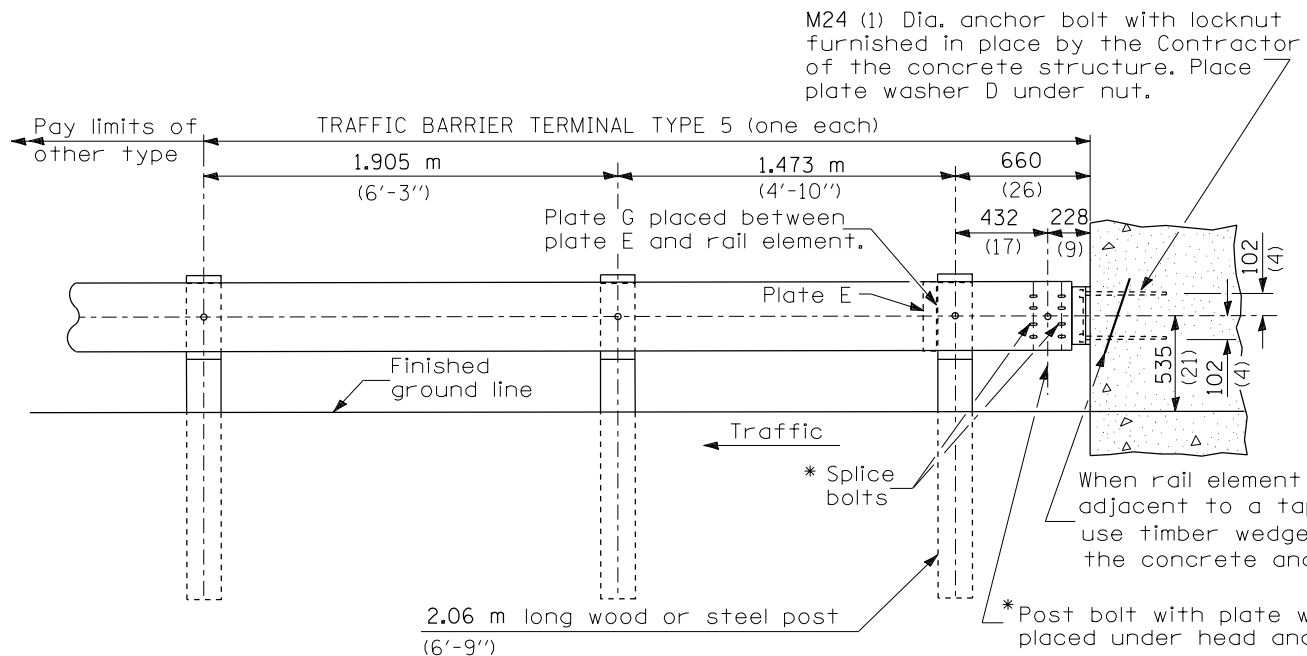
See Standard 630001 for details of guardrail not shown.

Use plate washer F at all posts.

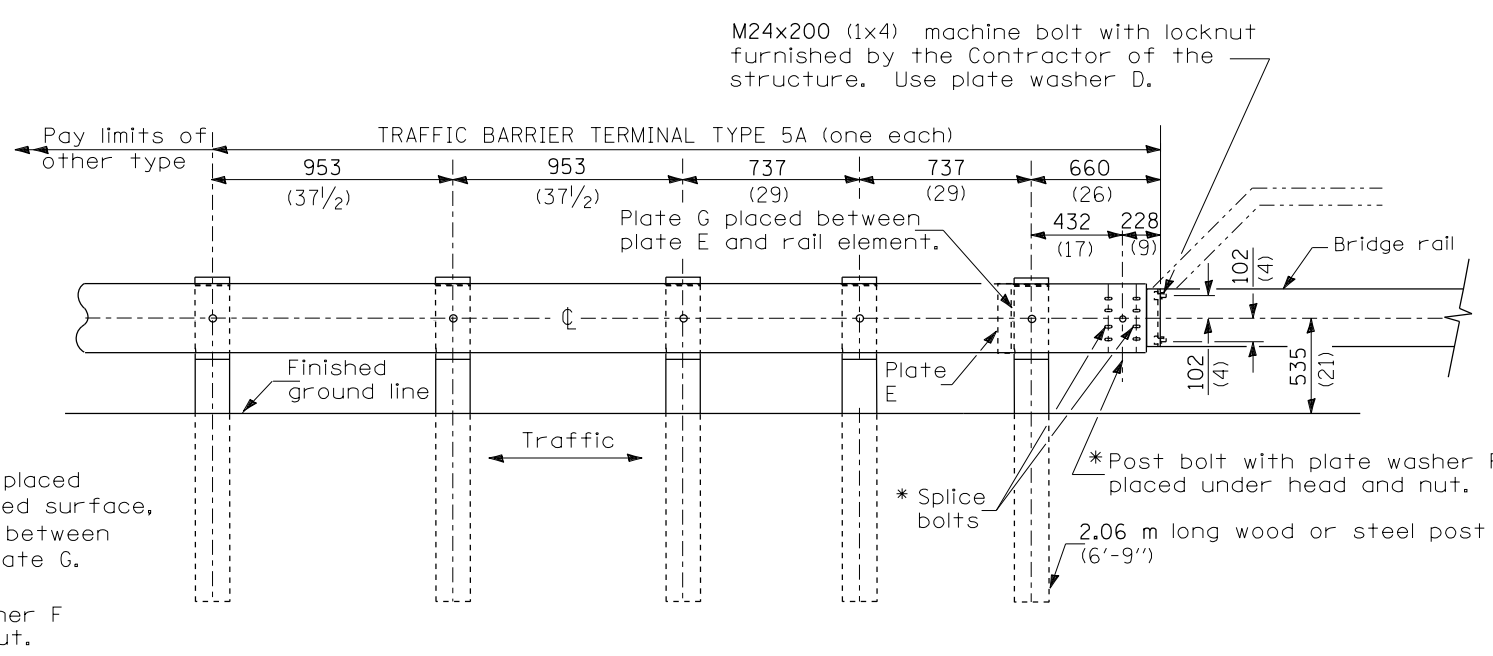
The bearing plate K shall be held in position by (2) two eight penny nails driven into the post and bent over the top of the plate.

All dimensions are in millimeters (inches) unless otherwise shown.

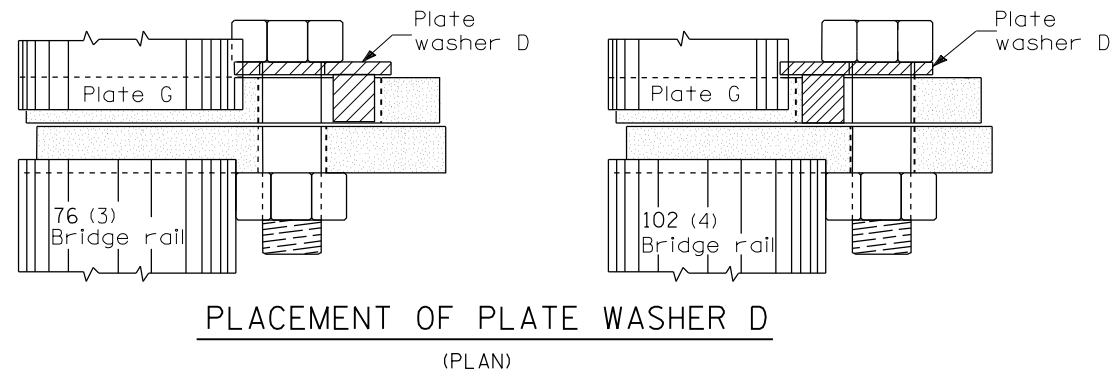
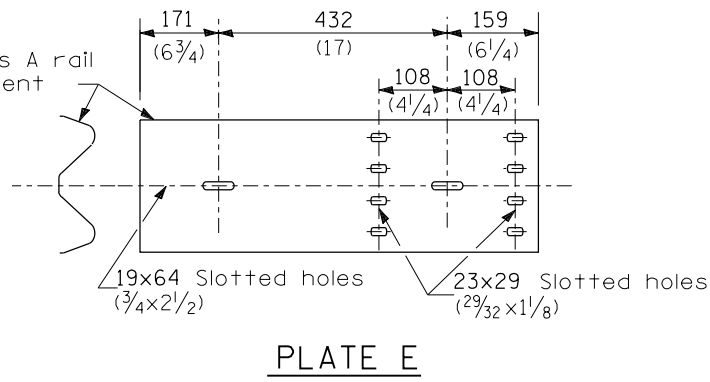
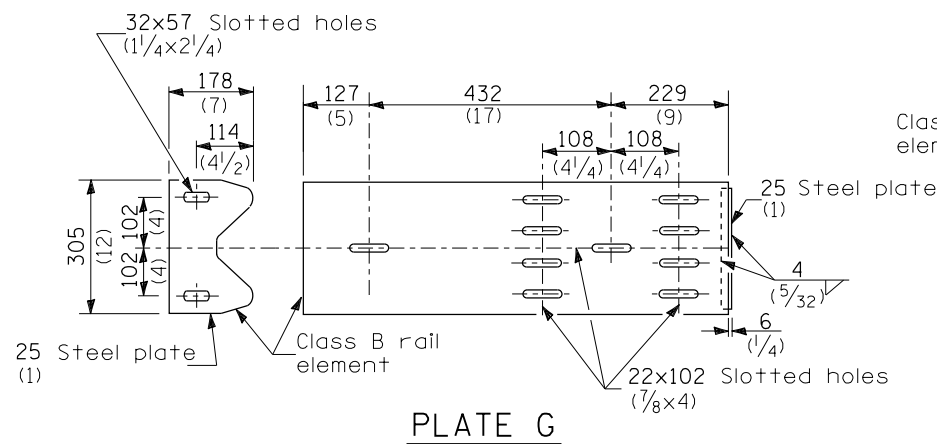
FILE NAME =	USER NAME = sparksgw	DESIGNED -	REVISED -	<b>STATE OF ILLINOIS DEPARTMENT OF TRANSPORTATION</b>	<b>PRE-MGS HIGHWAY STANDARD 631011-02 TRAFFIC BARRIER TERMINAL TYPE 2 EFFECTIVE 4-1-06</b>			F.A. RTE.	SECTION	COUNTY	TOTAL SHEETS	SHEET NO.	
Default	2020_Pre-MGS Highway Standard 631011-02.dgn	DRAWN -	REVISED -		SCALE:	SHEET	OF	SHEETS	STA.	TO	STA.	17	12
	PLOT SCALE = 26.0000' / in.	CHECKED -	REVISED -									CONTRACT NO. 72G20	
	PLOT DATE = Jun-28-2013 11:41:23AM	DATE -	REVISED -									ILLINOIS FED. AID PROJECT	



TYPE 5 - CONCRETE BRIDGE PARAPET



TYPE 5A - STEEL BRIDGE RAIL



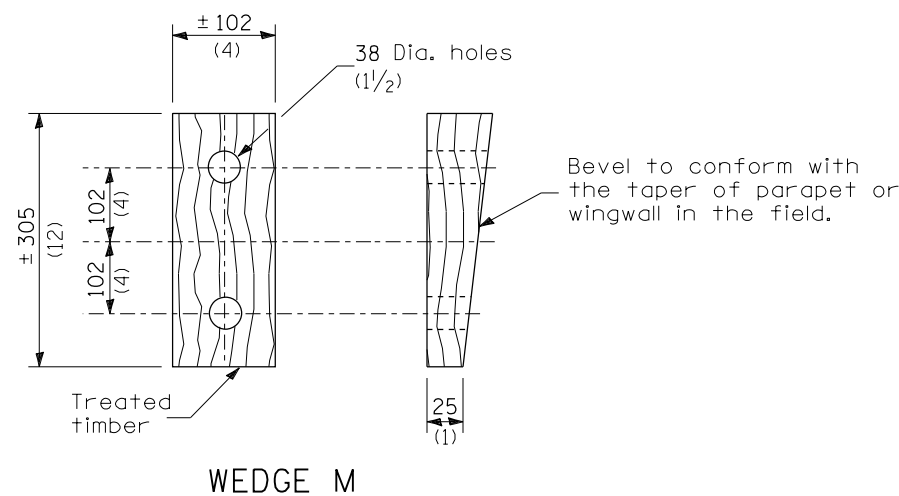
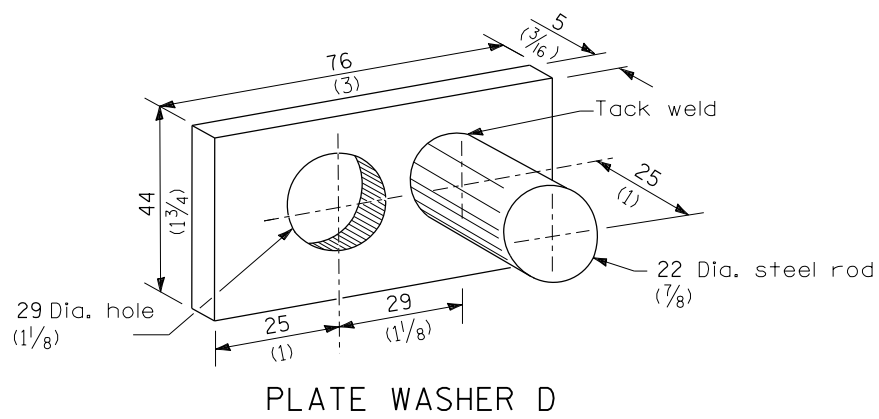
GENERAL NOTES

Install plate washer D so that the 25 mm (1") projection fills the remainder of the slotted holes in the 25 mm (1") end plate on plate G after the M24 (1") dia. bolts are in place.

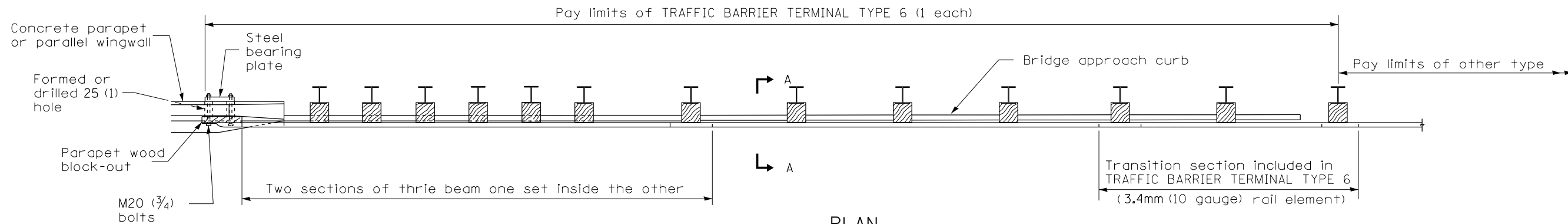
\* Bolts shall be provided with locknut or double nut and shall be tightened only to a point that will allow plate G to be free to move when an expansion joint exists below the connector.

See Standard 630001 for details of guardrail not shown.

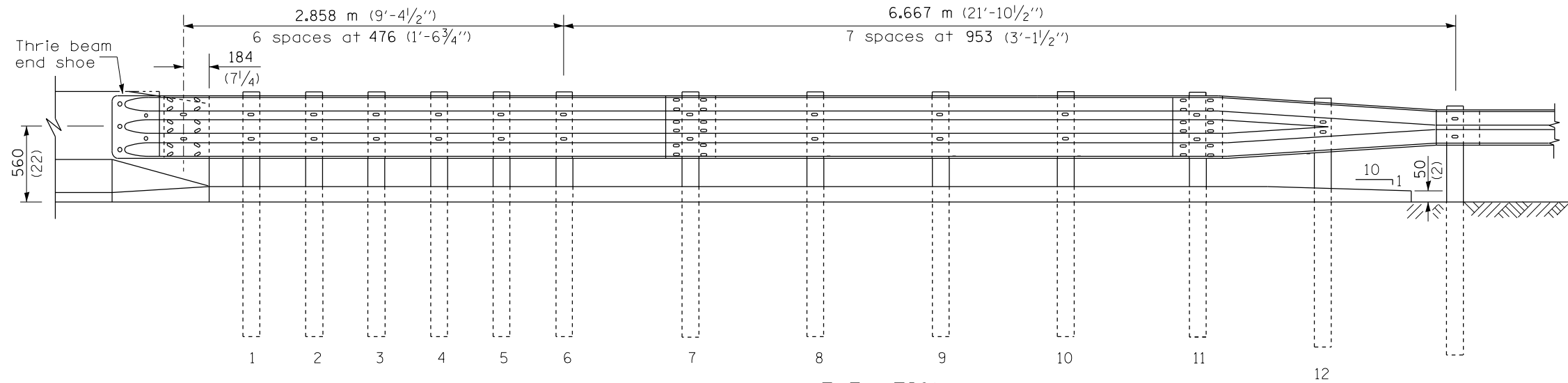
All dimensions are in millimeters (inches) unless otherwise shown.



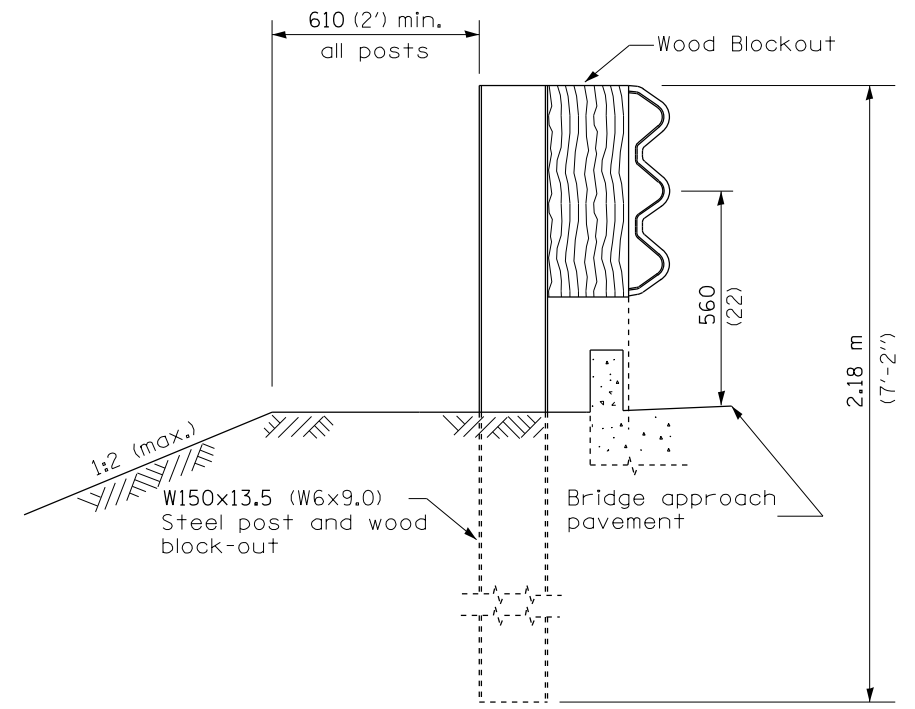
FILE NAME =	USER NAME = sparksgw	DESIGNED -	REVISED -	<b>STATE OF ILLINOIS DEPARTMENT OF TRANSPORTATION</b>	<b>PRE-MGS HIGHWAY STANDARD 631026-02 TRAFFIC BARRIER TERMINAL TYPE 5 &amp; 5A EFFECTIVE 4-1-2006</b> (SHEET 1 OF 1)	F.A. R.E.	SECTION	COUNTY	TOTAL SHEETS	SHEET NO.	
et:\pwork\pwork\sparksgw\10346074\0672020-Pre-MGS Highway Standard 631026-02.dgn	PLOT SCALE = 26.0000' / in.	DRAWN -	REVISED -			VAR	.	.	17	13	
Default	PLOT DATE = Jun-28-2013 11:41:25AM	CHECKED -	REVISED -			SCALE: SHEET OF SHEETS STA. TO STA.		CONTRACT NO. 72G20		ILLINOIS FED. AID PROJECT	
		DATE -	REVISED -			SCALE: SHEET OF SHEETS STA. TO STA.		CONTRACT NO. 72G20		ILLINOIS FED. AID PROJECT	



PLAN



ELEVATION



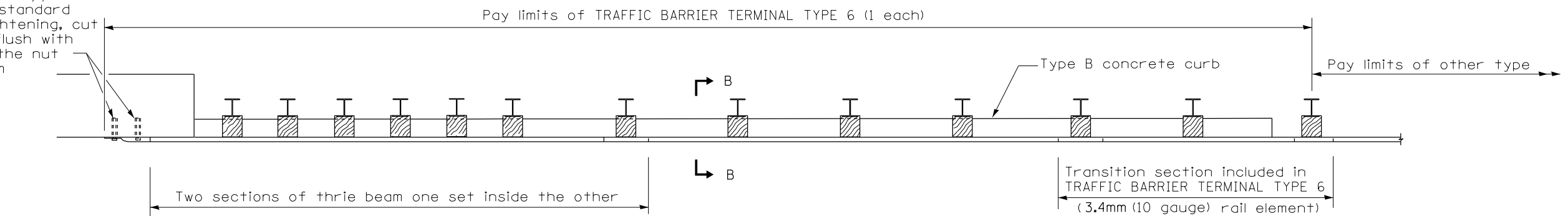
SECTION A-A

GENERAL NOTES

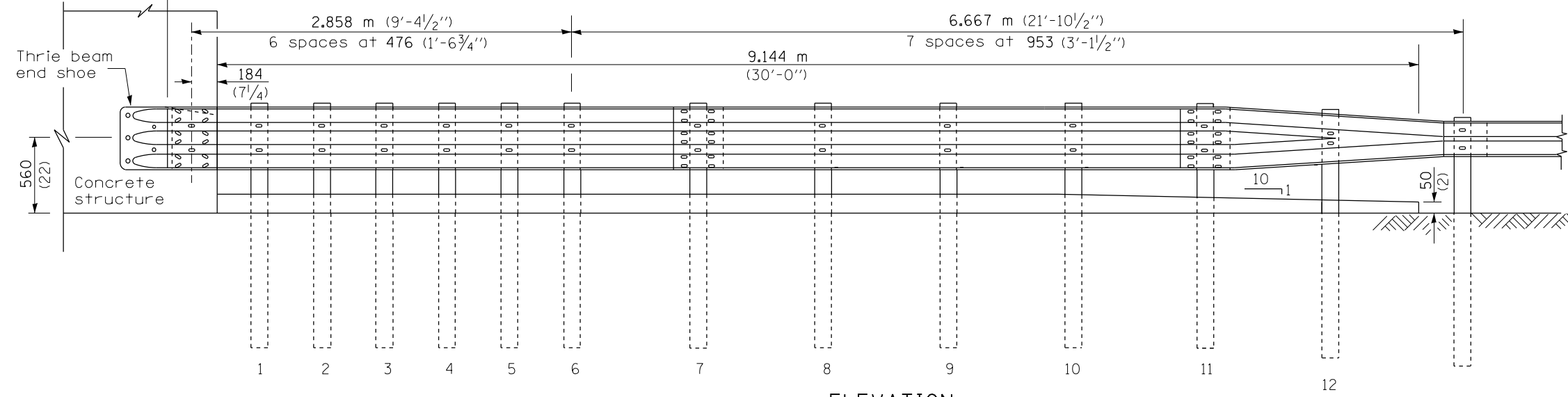
- See Standard 630001 for details of guardrail not shown.
- Thrie beam rail shall be bolted to block-out at all posts.
- See Standard 420401 for details of bridge approach pavement.
- All slope ratios are expressed as units of vertical displacement to units of horizontal displacement (V:H).
- All dimensions are in millimeters (inches) unless otherwise shown.

FILE NAME =	USER NAME = sparksgw	DESIGNED -	REVISED -	<b>STATE OF ILLINOIS DEPARTMENT OF TRANSPORTATION</b>	<b>PRE-MGS HIGHWAY STANDARD 631031-05 TRAFFIC BARRIER TERMINAL, TYPE 6 EFFECTIVE 4-1-06</b> (SHEET 1 OF 3)	F.A. RTE.	SECTION	COUNTY	TOTAL SHEETS	SHEET NO.	
Default	2020-Pre-MGS Highway Standard 631031-05.dgn	DRAWN -	REVISED -			VAR	*	*	17	14	
	PLOT SCALE = 26.0000' / in.	CHECKED -	REVISED -			CONTRACT NO. 72G20					
	PLOT DATE = Jun-28-2013 11:41:26AM	DATE -	REVISED -			ILLINOIS FED. AID PROJECT					

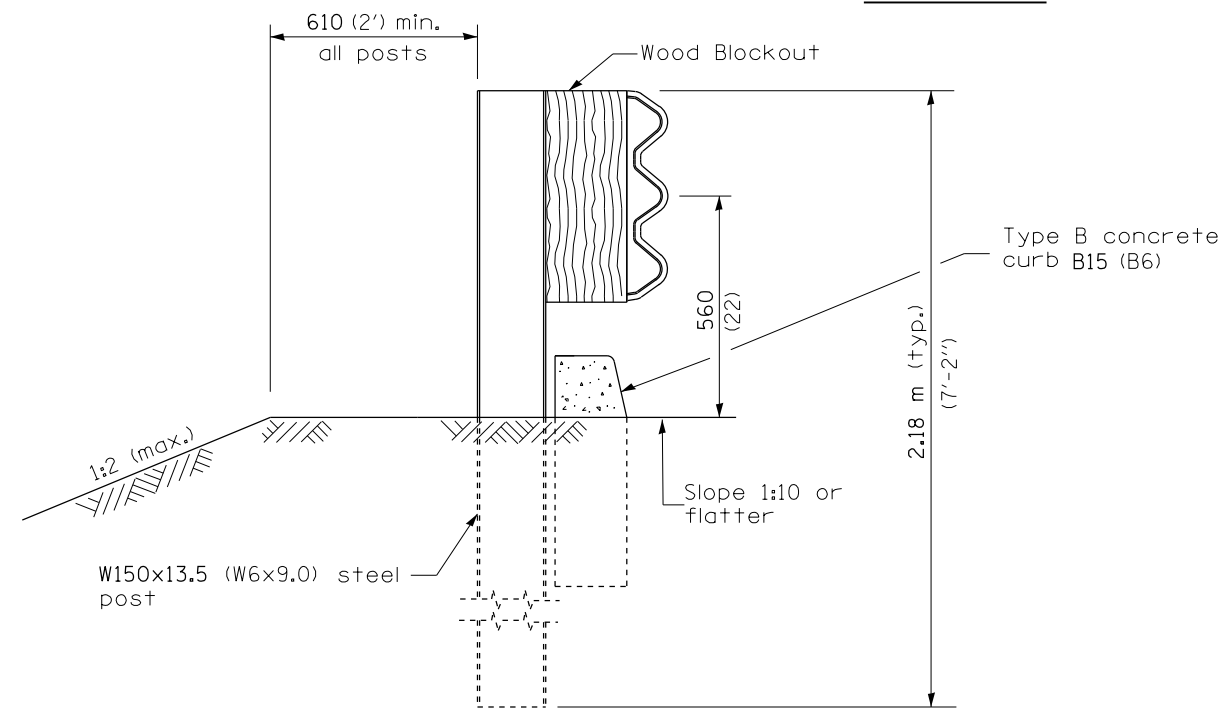
5 Epoxy grouted M20 (3/4") anchor bolts with standard washers. After tightening, cut the anchor bolts flush with nuts, and damage the nut to prevent it from loosening.



PLAN



ELEVATION



SECTION B-B

FILE NAME =	USER NAME = sparksgw	DESIGNED -	REVISED -
c:\pwork\pwork\sparksgw\d0346074\06720-Pre-MGS Highway Standard 631031-05.dgn		DRAWN -	REVISED -
Default	PLOT SCALE = 26.0000' / in.	CHECKED -	REVISED -
	PLOT DATE = Jun-28-2013 11:41:26AM	DATE -	REVISED -

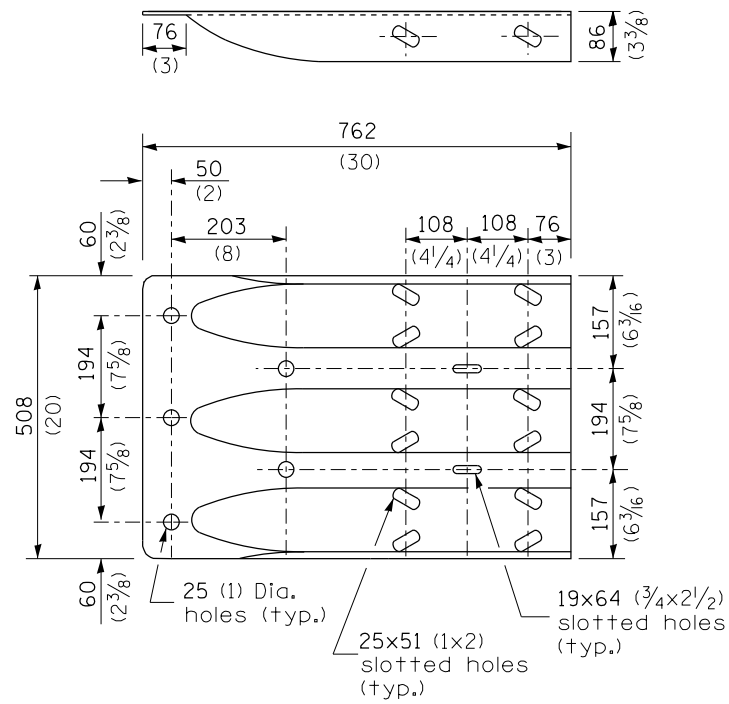
STATE OF ILLINOIS  
DEPARTMENT OF TRANSPORTATION

PRE-MGS HIGHWAY STANDARD 631031-05  
TRAFFIC BARRIER TERMINAL, TYPE 6  
EFFECTIVE 4-1-06 (SHEET 2 OF 3)

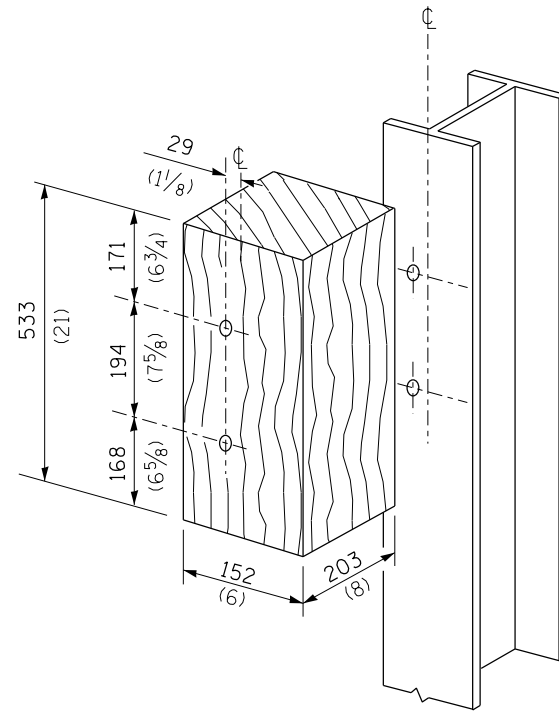
F.A. RTE.	SECTION	COUNTY	TOTAL SHEETS	SHEET NO.
			17	15
CONTRACT NO. 72G20			ILLINOIS FED. AID PROJECT	

SCALE: SHEET OF SHEETS STA. TO STA.

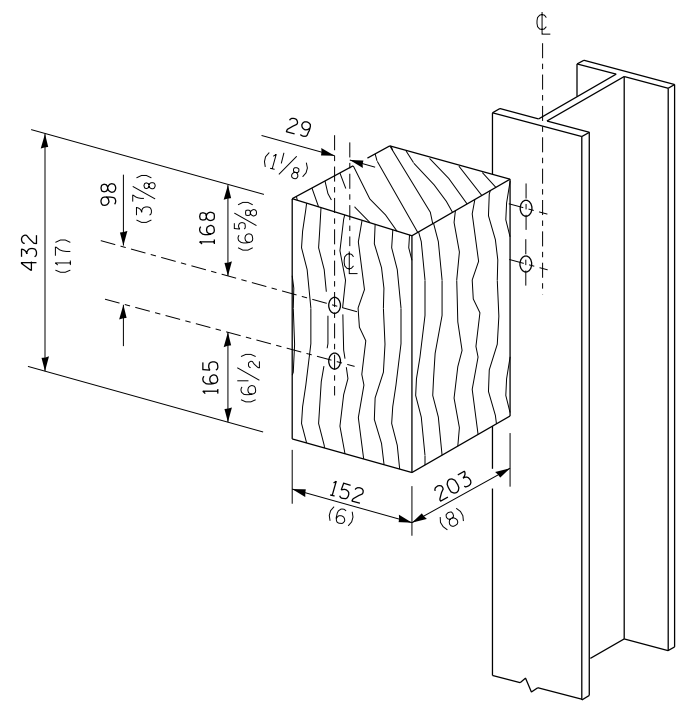
D6 CABLE/GUARDRAIL 2014



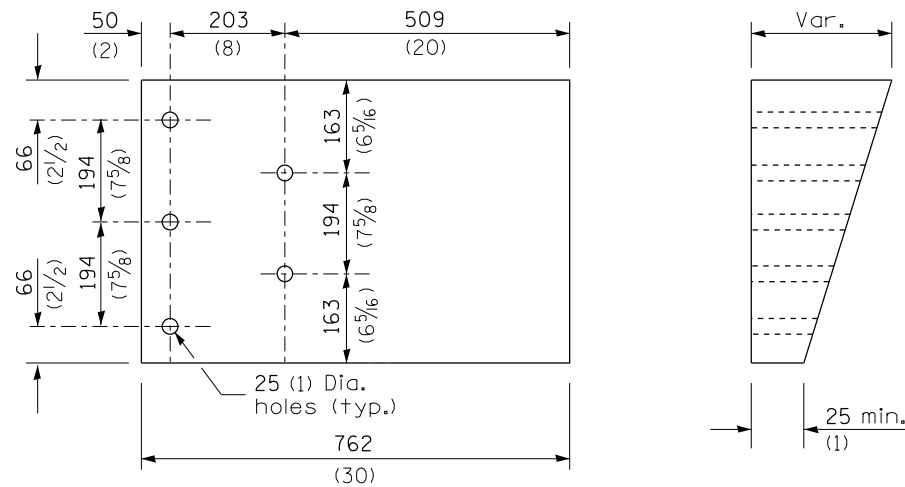
THRIE BEAM END SHOE DETAIL



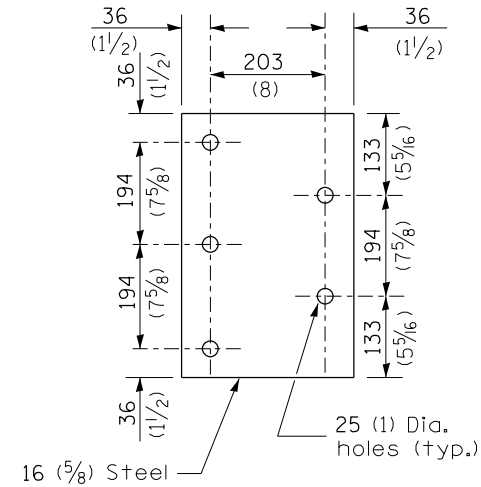
POSTS 1-11 WOOD BLOCKOUT DETAIL



POST 12 WOOD BLOCKOUT DETAIL



PARAPET WOOD BLOCK-OUT DETAIL

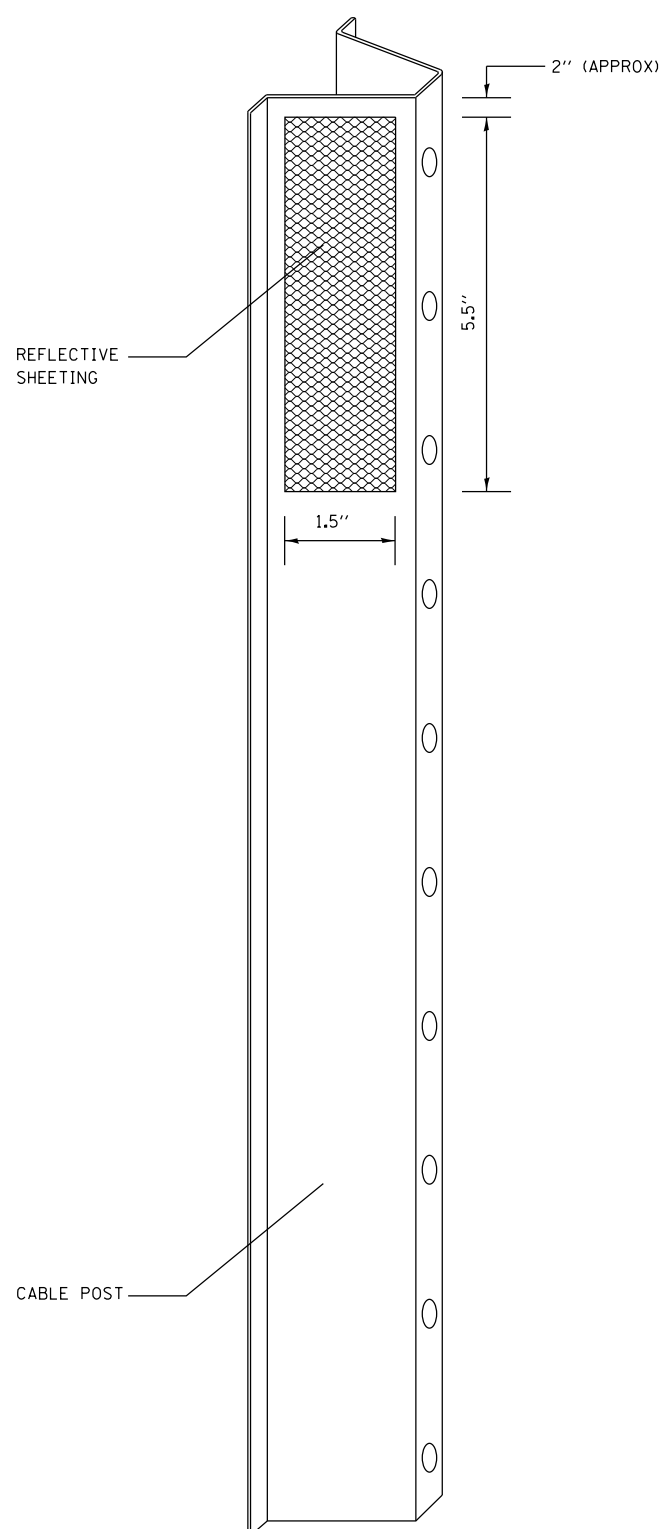
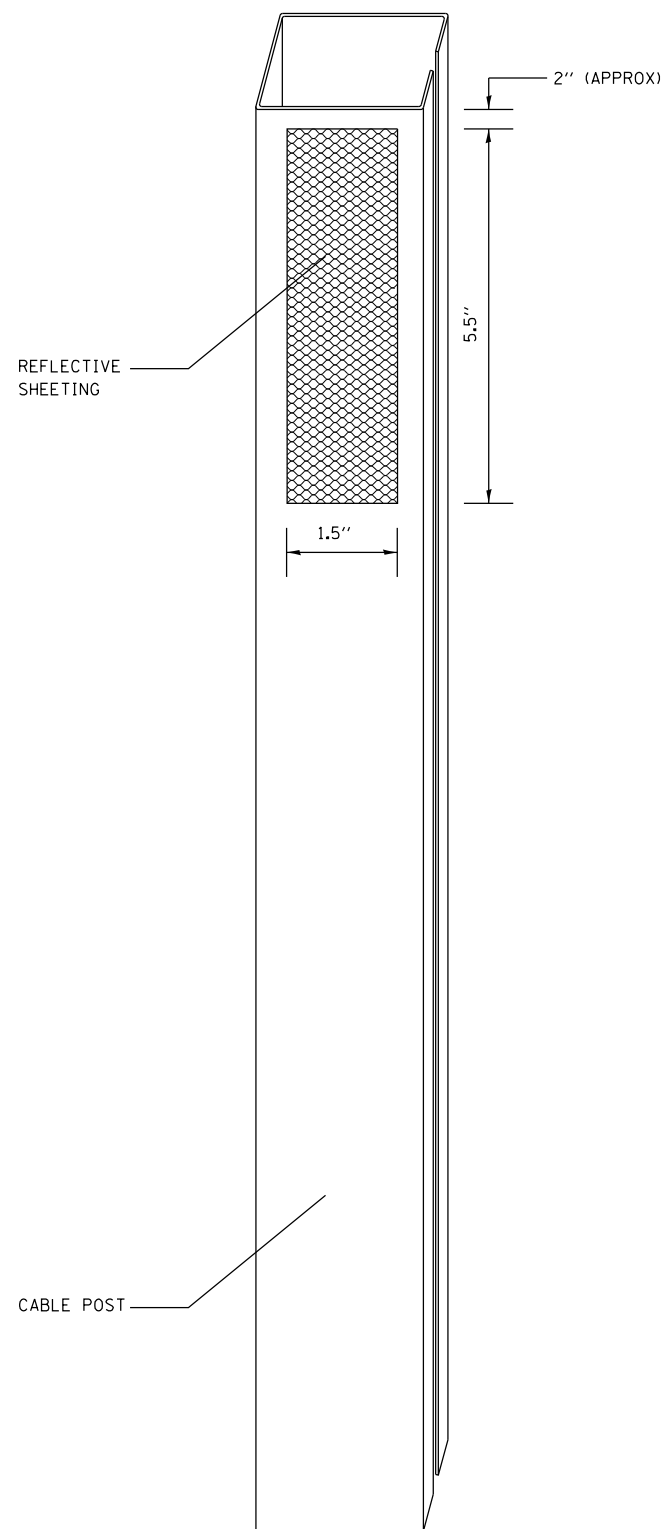


PARAPET STEEL BEARING PLATE DETAIL

(5 each individual 125x125x16 (5x5x5/8) steel plates with centered 25 (1)holes may be substituted for the plate shown.)

FILE NAME =	USER NAME = sparksgw	DESIGNED -	REVISED -	<b>STATE OF ILLINOIS DEPARTMENT OF TRANSPORTATION</b>	<b>PRE-MGS HIGHWAY STANDARD 631031-05 TRAFFIC BARRIER TERMINAL, TYPE 6 EFFECTIVE 4-1-06</b> (SHEET 3 OF 3)	F.A. RTE.	SECTION	COUNTY	TOTAL SHEETS	SHEET NO.	
Default	2020-Pre-MGS Highway Standard 631031-05.dgn	DRAWN -	REVISED -			VAR	.	.	17	16	
	PLOT SCALE = 26.0000' / in.	CHECKED -	REVISED -			SCALE: SHEET OF SHEETS STA. TO STA.		CONTRACT NO. 72G20			
	PLOT DATE = Jun-28-2013 11:41:27AM	DATE -	REVISED -			ILLINOIS FED. AID PROJECT					





**NOTES:**

**MATERIAL:** THE MATERIAL SHALL BE IN ACCORDANCE WITH SECTION 1090 AND 1091 OF THE STANDARD SPECIFICATIONS.

**CONSTRUCTION REQUIREMENTS:** THE REFLECTIVE SHEETING SHALL BE INSTALLED DIRECTLY ON THE CABLE POSTS. THE REFLECTIVE SHEETING SHALL BE INSTALLED AS SHOWN IN THE PLANS, ON EVERY OTHER POST (IN ORDER TO PROVIDE A SPACING OF 40'). THE SURFACE OF THE POST SHALL BE CLEANED OF ALL CONTAMINANTS PRIOR TO THE INSTALLATION OF THE REFLECTIVE SHEETING. THE SURFACE SHALL BE CLEANED USING A 5-8 PERCENT PHOSPHORIC ACID SOLUTION AND RINSED WITH CLEAN WATER OR AS RECOMMENDED BY THE MANUFACTURER OF THE REFLECTIVE SHEETING AND AS APPROVED BY THE ENGINEER.

**BASIS OF PAYMENT:** THIS WORK WILL BE PAID FOR AT THE CONTRACT UNIT PRICE EACH FOR CABLE GUARD MARKER.

FILE NAME =	USER NAME = sparksgw	DESIGNED -	REVISED -
c:\pwork\work\pwork\sparksgw\10346074\0672020-sht-details.dgn		DRAWN -	REVISED -
Default	PLOT SCALE = 100.0000' / in.	CHECKED -	REVISED -
	PLOT DATE = Jun-28-2013 11:41:28AM	DATE -	REVISED -

**STATE OF ILLINOIS  
DEPARTMENT OF TRANSPORTATION**

**CABLE GUARD MARKER DETAIL**

SCALE: SHEET OF SHEETS STA. TO STA.

F.A. RTE.	SECTION	COUNTY	TOTAL SHEETS	SHEET NO.
			17	17
			CONTRACT NO. 72G20	
ILLINOIS FED. AID PROJECT				