

STATE OF ILLINOIS
DEPARTMENT OF TRANSPORTATION
DIVISION OF HIGHWAYS
PROPOSED
CONTRACT MAINTENANCE

FOR INDEX OF SHEETS, SEE SHEET NO. 2

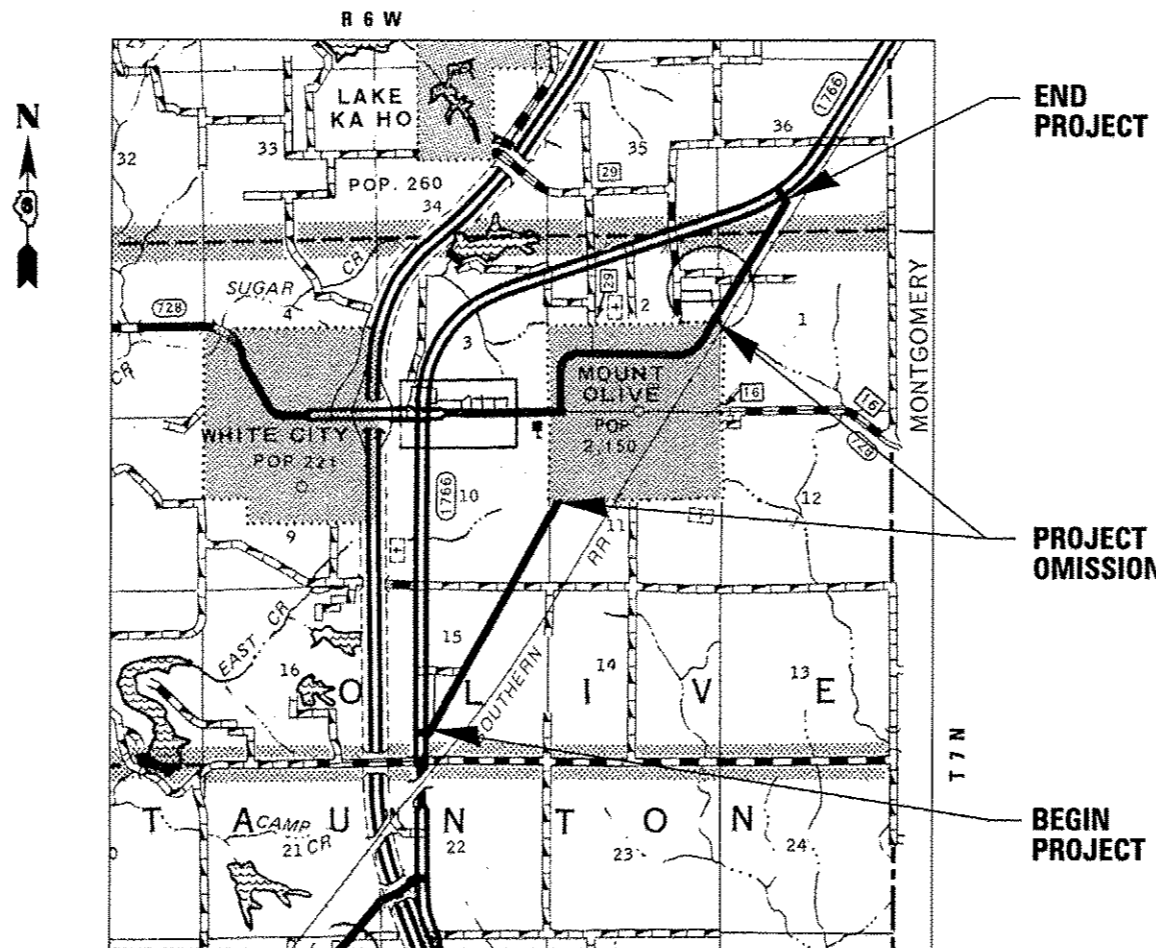
SBI 16 (OLD OLD US 66)
SECTION (22,23) Q
PROJECT BIT. SURF. TREATMENT (A-1)
MACOUPIN COUNTY

S.B.I. RTE.	SECTION	COUNTY	TOTAL SHEETS	SHEET NO.
16	(22,23) Q	MACOUPIN	6	1
FED. ROAD DIST. NO. -		ILLINOIS	CONTRACT NO. 72G37	

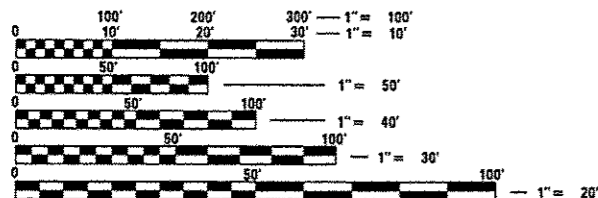
D-96-073-13



C-96-073-13



ADT = 1,250(2012)
 SU = 100
 MU = 20



FULL SIZE PLANS HAVE BEEN PREPARED USING STANDARD ENGINEERING SCALES. REDUCED SIZED PLANS WILL NOT CONFORM TO STANDARD SCALES. IN MAKING MEASUREMENTS ON REDUCED PLANS, THE ABOVE SCALES MAY BE USED.

J.U.L.I.E.
 JOINT UTILITY LOCATION INFORMATION FOR EXCAVATION
 1-800-892-0123
 OR 811

PLAN AND CONTRACT TECHNICIAN
 TIMOTHY SHARP (217)782-7743

CONTRACT NO. 72G37

GROSS LENGTH = 23,391.00 FT. = 4.430 MILES
 NET LENGTH = 13,992.00 FT. = 2.650 MILES

STATE OF ILLINOIS
 DEPARTMENT OF TRANSPORTATION
 DIVISION OF HIGHWAYS

SUBMITTED July 10 2013
Rep. Z. Smith
 DEPUTY DIRECTOR OF HIGHWAYS, REGION ENGINEER

Aug 16 2013
John D. Baranelli, P.E.
 ENGINEER OF DESIGN AND ENVIRONMENT

Aug 16 2013
Omara Osman, P.E.
 DIRECTOR OF HIGHWAYS, CHIEF ENGINEER

**PRINTED BY THE AUTHORITY
 OF THE STATE OF ILLINOIS**

INDEX OF SHEETS

1. COVER
2. INDEX OF SHEETS, GENERAL NOTES, AND HIGHWAY STANDARDS
3. SUMMARY OF QUANTITIES
4. LOCATION MAP
5. TYPICAL SECTIONS
6. SCHEDULES

HIGHWAY STANDARDS

- 701001-02 OFF-RD OPERATIONS, 2L, 2W, MORE THAN 15' AWAY FROM EDGE OF PAVEMENT
- 701006-04 OFF-RD OPERATIONS, 2L, 2W, 15' TO 24" FROM EDGE OF PAVEMENT
- 701011-03 OFF-RD MOVING OPERATIONS, 2L, 2W, DAY ONLY
- 701201-04 LANE CLOSURE, 2L, 2W, DAY ONLY, FOR SPEEDS > 45 MPH
- 701301-04 LANE CLOSURE, 2L, 2W, SHORT TIME OPERATIONS
- 701306-03 LANE CLOSURE, 2L, 2W, SLOW MOVING OPERATIONS DAY ONLY, FOR SPEEDS > 45 MPH
- 701311-03 LANE CLOSURE, 2L, 2W, MOVING OPERATIONS DAY ONLY
- 701901-02 TRAFFIC CONTROL DEVICES
- 780001-03 TYPICAL PAVEMENT MARKINGS

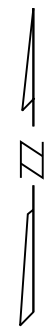
GENERAL NOTES

1. ANY REFERENCE TO THE STANDARDS THROUGHOUT THE PLANS SHALL BE INTERPRETED TO BE THE LATEST STANDARDS OF THE DEPARTMENT AS INCLUDED IN THE PLANS.
2. NO EXCAVATION IS ANTICIPATED ON THIS PROJECT. SHOULD ANY EXCAVATION BE REQUIRED, J.U.L.I.E. SHALL BE NOTIFIED A MINIMUM OF 48 HOURS IN ADVANCE (800) 892-0123.
3. THE AGGREGATE GRADATION FOR THE A-1 BITUMINOUS SURFACE TREATMENT SHALL BE CA-16 OR CA-20.
4. AGGREGATE FOR THE A-1 BITUMINOUS SURFACE TREATMENT SHALL BE CRUSHED LIMESTONE.
5. SHORT-TERM PAVEMENT MARKING SHALL BE PAINT - TAPE WILL NOT BE ALLOWED.
6. PERMANENT PAVEMENT MARKINGS SHALL NOT BE APPLIED UNTIL 10 DAYS AFTER THE AGGREGATE HAS BEEN APPLIED.
7. ADDITIONAL BROOMING (UP TO 4 TIMES) SHALL BE REQUIRED AT THE DISCRETION OF THE ENGINEER, INCLUDING THE DAY OF PERMANENT PAVEMENT MARKING.
8. THE CONTRACTOR SHALL GIVE IDOT OPERATIONS TWO WEEKS NOTICE PRIOR TO STARTING WORK IN ORDER FOR IDOT TO COMPLETE PATCHING.

STATE OF ILLINOIS DEPARTMENT OF TRANSPORTATION DIVISION OF HIGHWAYS DISTRICT 6	
EXAMINED <u>July 9</u>	20 <u>13</u>
<u>William Pan</u> ENGINEER OF OPERATIONS	
EXAMINED <u>May 14</u>	20 <u>13</u>
<u>Jimmy F...</u> ENGINEER OF PROJECT IMPLEMENTATION	
EXAMINED <u>May 17</u>	20 <u>13</u>
<u>ARMI</u> ENGINEER OF PROGRAM DEVELOPMENT	



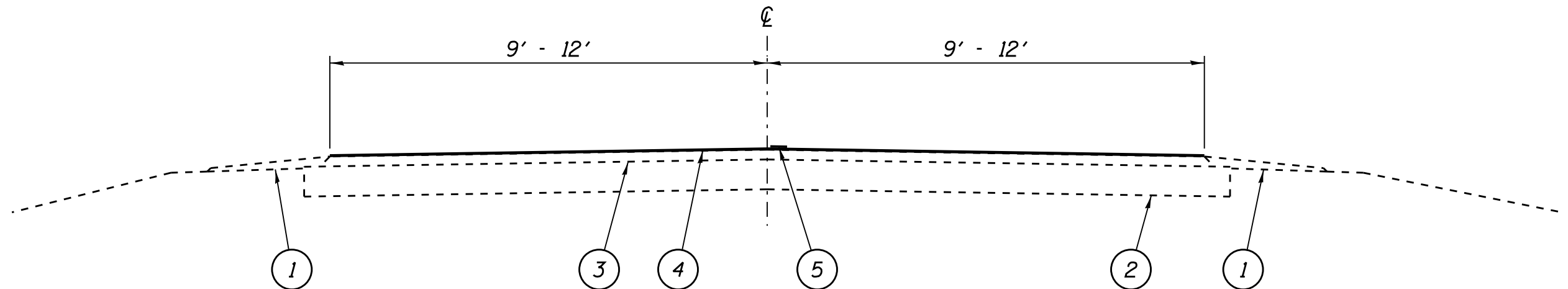
END PROJECT
MILE 5.01



PROJECT
OMISSION
MILE 2.28
TO 4.06

BEGIN PROJECT
MILE 0.58

FILE NAME =	USER NAME = #USER#	DESIGNED -	REVISED -	STATE OF ILLINOIS DEPARTMENT OF TRANSPORTATION	LOCATION MAP	S.B.I. RTE.	SECTION	COUNTY	TOTAL SHEETS	SHEET NO.	
#FILE#		DRAWN -	REVISED -			16	(22,23) 0	MACOUPIN	6	4	
Default		CHECKED -	REVISED -			SCALE: _____ SHEET 1 OF 1 SHEETS STA. _____ TO STA. _____		CONTRACT NO. 72G37			
		DATE -	REVISED -			ILLINOIS FED. AID PROJECT					



MILE 0.58 TO 1.99 - 18 FT WIDE
 MILE 1.99 TO 2.28 - 24 FT WIDE
 MILE 4.06 TO 4.98 - 18 FT WIDE
 MILE 4.98 TO 5.01 - 24 FT WIDE

L E G E N D

- 1 - EXIST. AGGREGATE SHOULDERS, TYPE B
- 2 - EXIST. STABILIZED OR CONCRETE BASE COURSE
- 3 - EXIST. BITUMINOUS SURFACE
- 4 - PROP. BITUMINOUS SURFACE TREATMENT (CLASS A-1)
- 5 - PROP. PAINT PAVEMENT MARKING - LINE 5"

FILE NAME =	USER NAME = #USER#	DESIGNED - ___	REVISED - ___	STATE OF ILLINOIS DEPARTMENT OF TRANSPORTATION	TYPICAL SECTIONS			S.B.I. RTE. #	SECTION	COUNTY	TOTAL SHEETS	SHEET NO.
#FILEL#		DRAWN - ___	REVISED - ___					16	(22,23) 0	MACOUPIN	6	5
Default	PLOT SCALE = #SCALE#	CHECKED - ___	REVISED - ___		SCALE: _____ SHEET 1 OF 1 SHEETS STA. _____ TO STA. _____			CONTRACT NO. 72G37				
	PLOT DATE = #DATE#	DATE - ___	REVISED - ___		ILLINOIS FED. AID PROJECT							

PAVEMENT MARKING SCHEDULE			
STATION	TYPE	PAINT PAVEMENT MARKING LINE 5"	
		WHITE	YELLOW
MILE 0.58 TO 5.01	SKIP DASH		3,500 FT
MILE 0.58 TO 5.01	EDGE LINE	27,984 FT	
TOTALS		27,984 FT	3,500 FT

OMISSION MILE 2.28 TO 4.06