

EXIST. CURVE RT45\_RA-2  
 PI STA. = 24+86.45  
 $\Delta = 26^\circ 37' 49''$  (RT)  
 $D = 13^\circ 04' 17''$   
 $R = 438.33'$   
 $T = 103.74'$   
 $L = 203.73'$   
 $E = 12.11'$   
 P.C.C. STA. = 23+82.71  
 P.T. STA. = 25+86.44

EXIST. CURVE RT45\_RA-1  
 PI STA. = 26+55.34  
 $\Delta = 150^\circ 55' 43''$  (RT)  
 $D = 25^\circ 41' 38''$   
 $R = 223.00'$   
 $T = 860.05'$   
 $L = 587.41'$   
 $E = 665.49'$   
 P.C. STA. = 17+95.30  
 P.C.C. STA. = 23+82.71

EXIST. CURVE RT45\_RC-1  
 PI STA. = 28+71.80  
 $\Delta = 146^\circ 55' 07''$  (LT)  
 $D = 25^\circ 41' 35''$   
 $R = 223.00'$   
 $T = 750.88'$   
 $L = 571.82'$   
 $E = 560.29'$   
 P.C. STA. = 21+20.92  
 P.C.C. STA. = 26+92.74

EXIST. CURVE RT45\_RC-2  
 PI STA. = 27+96.44  
 $\Delta = 26^\circ 37' 16''$  (LT)  
 $D = 13^\circ 04' 17''$   
 $R = 438.33'$   
 $T = 103.70'$   
 $L = 203.66'$   
 $E = 12.10'$   
 P.C.C. STA. = 26+92.74  
 P.T. STA. = 28+96.40

EXIST. CURVE RT45\_RB-1  
 PI STA. = 19+91.73  
 $\Delta = 40^\circ 35' 43''$  (RT)  
 $D = 10^\circ 17' 10''$   
 $R = 557.02'$   
 $T = 206.02'$   
 $L = 394.66'$   
 $E = 36.88'$   
 P.C. STA. = 17+85.71  
 P.T. STA. = 21+80.37

EXIST. CURVE RT45\_RB-2  
 PI STA. = 26+90.53  
 $\Delta = 36^\circ 31' 17''$  (LT)  
 $D = 8^\circ 12' 35''$   
 $R = 697.91'$   
 $T = 230.28'$   
 $L = 444.86'$   
 $E = 37.01'$   
 P.C. STA. = 24+60.25  
 P.T. STA. = 29+05.11

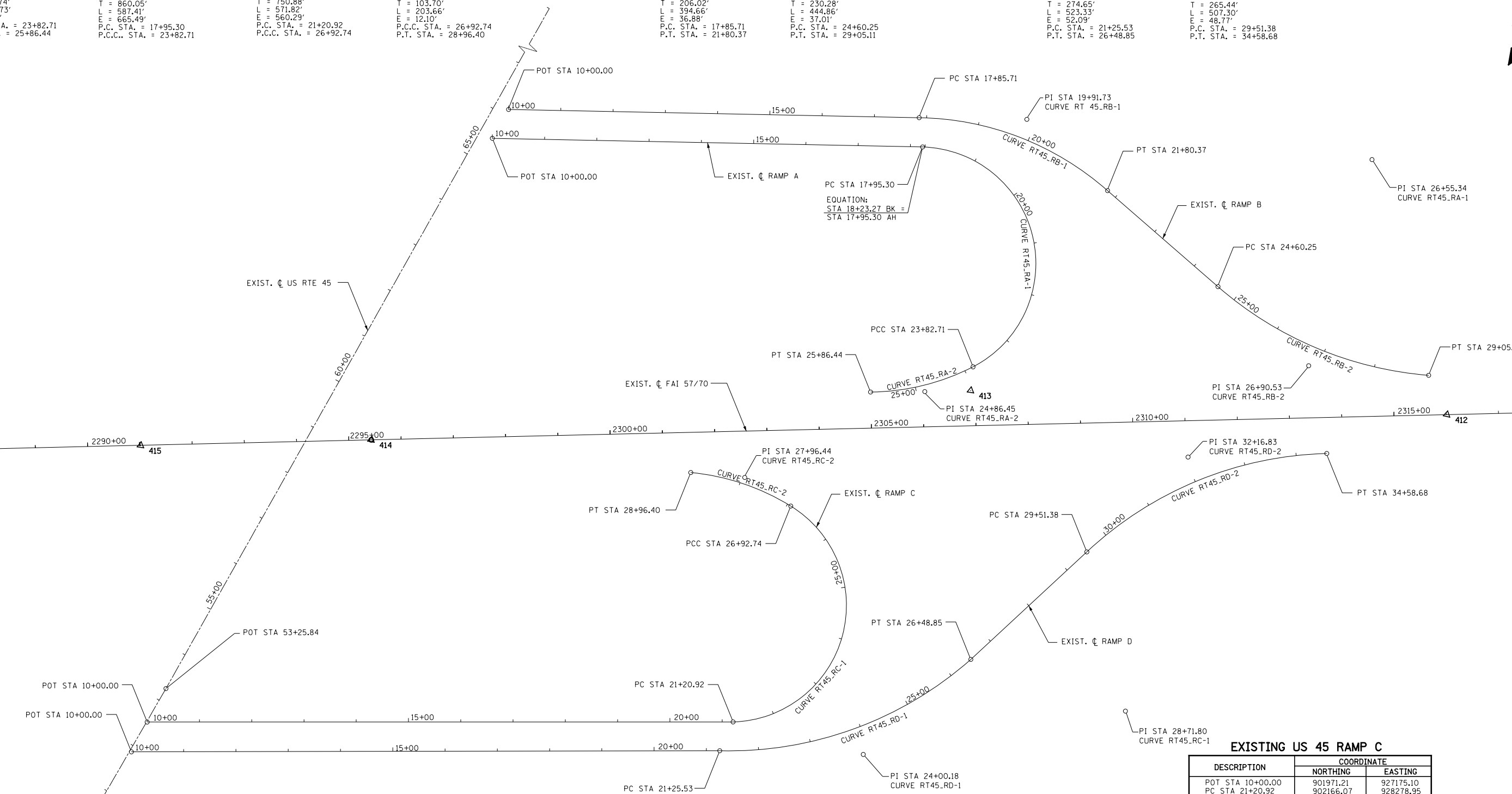
EXIST. CURVE RT45\_RD-1  
 PI STA. = 24+00.18  
 $\Delta = 42^\circ 57' 34''$  (LT)  
 $D = 8^\circ 12' 32''$   
 $R = 697.91'$   
 $T = 274.65'$   
 $L = 523.33'$   
 $E = 52.09'$   
 P.C. STA. = 21+25.53  
 P.T. STA. = 26+48.85

EXIST. CURVE RT45\_RD-2  
 PI STA. = 32+16.83  
 $\Delta = 41^\circ 38' 51''$  (RT)  
 $D = 8^\circ 12' 35''$   
 $R = 697.91'$   
 $T = 265.44'$   
 $L = 507.30'$   
 $E = 48.77'$   
 P.C. STA. = 29+51.38  
 P.T. STA. = 34+58.68



MATCH LINE STA 2288+00.00

MATCH LINE STA 2317+50.00



**EXISTING US ROUTE 45**

DESCRIPTION	COORDINATE	
	NORTHING	EASTING
POT STA 45+00.00	901265.00	926915.54
POT STA 53+25.84	902040.53	927199.37
POT STA 74+78.96	904071.31	927914.80

**CONTROL POINTS**

CONTROL POINT	COORDINATE	
	NORTHING	EASTING
415	902490.21	927071.05
414	902577.46	927503.53
413	902869.40	928616.57
412	902982.33	929521.80

**EXISTING FAI-57/70**

DESCRIPTION	COORDINATE	
	NORTHING	EASTING
POT STA 2295+42.88	902577.46	927503.53

**EXISTING US 45 RAMP A**

DESCRIPTION	COORDINATE	
	NORTHING	EASTING
POT STA 10+00.00	903185.83	927631.48
PC STA 17+95.30 AH=	903312.49	928444.94
STA EQUATION		
STA 18+23.27 BK		
PI STA 26+55.34	903437.96	929295.79
PCC STA 23+82.71	902914.87	928613.11
PI STA 24+86.45	902852.27	928530.38
PT STA 25+86.44	902833.39	928428.38

**EXISTING US 45 RAMP B**

DESCRIPTION	COORDINATE	
	NORTHING	EASTING
POT STA 10+00.00	903245.56	927652.47
PC STA 17+85.71	903366.44	928428.83
PI STA 19+91.73	903399.14	928632.24
PT STA 21+80.37	903291.60	928807.97
PC STA 24+60.25	903147.41	929047.85
PI STA 26+90.53	903028.50	929245.05
PT STA 29+05.11	903050.30	929474.30

**EXISTING US 45 RAMP C**

DESCRIPTION	COORDINATE	
	NORTHING	EASTING
POT STA 10+00.00	901971.21	927175.10
PC STA 21+20.92	902166.07	928278.95
PI STA 28+71.80	902316.82	929014.54
PCC STA 26+92.74	902592.02	928315.91
PI STA 27+96.44	902630.59	908219.65
PT STA 28+96.40	902621.95	928116.31

**EXISTING US 45 RAMP D**

DESCRIPTION	COORDINATE	
	NORTHING	EASTING
POT STA 10+00.00	901909.87	927155.33
PC STA 21+25.53	902107.37	928263.39
PI STA 24+00.18	902148.03	928535.01
PT STA 26+48.85	902362.90	928706.09
PC STA 29+51.38	902603.96	928888.89
PI STA 32+16.83	902816.32	929048.14
PT STA 34+58.68	902869.17	929308.27

