

**PROP. ROADWAY A  
CURVE C125**  
 PI STA. = 2370+35.89  
 $\Delta = 27^\circ 00' 00''$  (RT)  
 D = 1' 00' 00"  
 R = 5,729.58'  
 T = 1,375.55'  
 L = 2,700.00'  
 E = 162.81'  
 $e = 3.34\%$   
 T.R. = 45.00'  
 S.E. RUN = 100.20'  
 P.C. STA. = 2356+60.34  
 P.T. STA. = 2383+60.34  
 SE ATTAINED STA. 2355+79.92 TO  
 STA 2356+93.74 (0.00% TO 3.34%)  
 SE REMOVED STA. 2383+26.94 TO  
 STA 2384+30.52 (3.34% TO 0.00%)

**PROP. ROADWAY A  
CURVE C126**  
 PI STA. = 2391+78.84  
 $\Delta = 13^\circ 30' 00''$  (LT)  
 D = 1' 00' 00"  
 R = 5,729.58'  
 T = 678.14'  
 L = 1,350.00'  
 E = 39.99'  
 $e = 3.34\%$   
 T.R. = 167.50'  
 S.E. RUN = 1,150.30'  
 P.C. STA. = 2385+00.69  
 P.T. STA. = 2398+50.69  
 SE ATTAINED STA. 2384+30.52 TO  
 STA 2385+34.09 (0.00% TO 3.34%)  
 SE REMOVED STA. 2398+00.59 TO  
 STA 2399+59.73 (I70E) (3.34% TO 1.50%)

**PROP. RAMP F  
CURVE C69**  
 PI STA. = 12+92.53  
 $\Delta = 24^\circ 21' 40''$  (LT)  
 D = 4' 13' 40"  
 R = 1,355.20'  
 T = 292.52'  
 L = 576.21'  
 E = 31.21'  
 $e = 7.85\%$   
 T.R. = NA  
 S.E. RUN = NA  
 P.C. STA. = 10+00.00  
 P.T. STA. = 15+76.21  
 SE REMOVED STA. 14+46.21  
 TO STA 17+76.19 (7.85% TO 3.26%)

**PROP. RAMP G  
CURVE C104**  
 PI STA. = 11+07.75  
 $\Delta = 4^\circ 35' 25''$  (RT)  
 D = 2' 07' 52"  
 R = 2,688.39'  
 T = 107.75'  
 L = 215.39'  
 E = 2.16'  
 P.C. STA. = 10+00.00  
 P.T. STA. = 12+15.39

**PROP. RAMP G  
CURVE C103**  
 PI STA. = 14+79.04  
 $\Delta = 2^\circ 31' 09''$  (RT)  
 D = 7' 25' 09"  
 R = 772.27'  
 T = 351.03'  
 L = 658.93'  
 E = 76.03'  
 $e = 8.00\%$   
 T.R. = NA  
 S.E. RUN = NA  
 P.C. STA. = 12+99.13  
 P.T. STA. = 16+58.88

**PROP. RAMP G  
CURVE C28**  
 PI STA. = 21+49.91  
 $\Delta = 48^\circ 53' 14''$  (RT)  
 D = 7' 25' 09"  
 R = 772.27'  
 T = 351.03'  
 L = 658.93'  
 E = 76.03'  
 $e = 8.00\%$   
 T.R. = NA  
 S.E. RUN = NA  
 P.C. STA. = 17+98.88  
 P.T. STA. = 24+57.82  
 SE ATTAINED STA. 16+58.48 TO  
 STA 18+68.88 (3.34% TO 8.00%)

**EXIST. ROADWAY A  
CURVE LC2**  
 PI STA. = 2370+35.89  
 $\Delta = 27^\circ 00' 00''$  (RT)  
 D = 1' 00' 00"  
 R = 5,729.58'  
 T = 1,375.55'  
 L = 2,700.00'  
 E = 162.81'  
 P.C. STA. = 2356+60.34  
 P.T. STA. = 2383+60.34

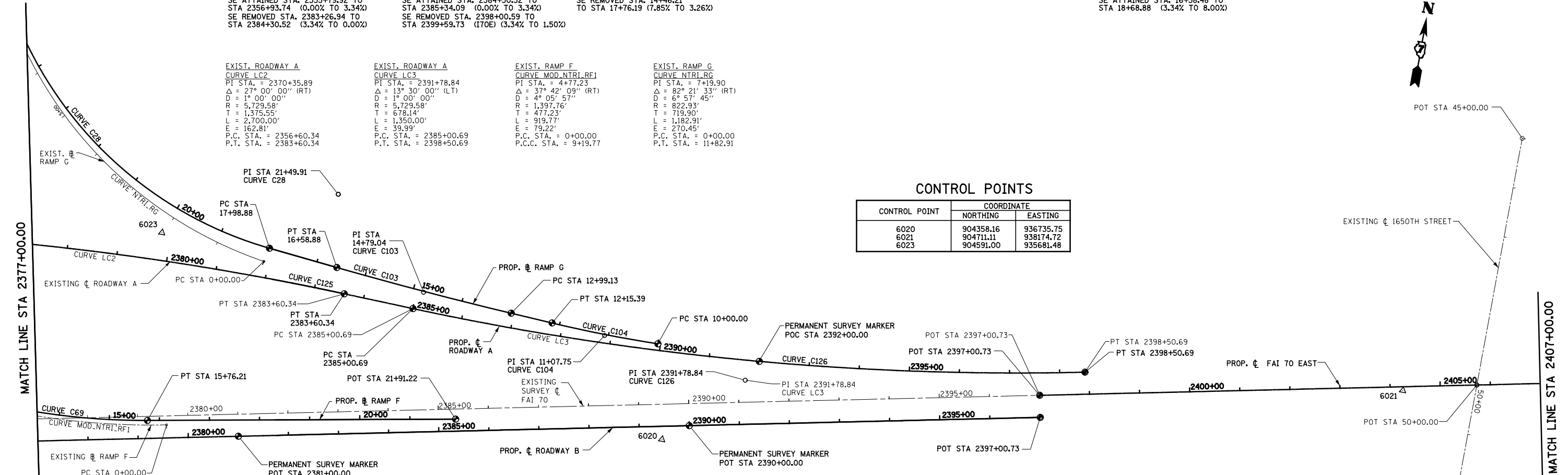
**EXIST. ROADWAY A  
CURVE LC3**  
 PI STA. = 2391+78.84  
 $\Delta = 13^\circ 30' 00''$  (LT)  
 D = 1' 00' 00"  
 R = 5,729.58'  
 T = 678.14'  
 L = 1,350.00'  
 E = 39.99'  
 P.C. STA. = 2385+00.69  
 P.T. STA. = 2398+50.69

**EXIST. RAMP F  
CURVE MOD.NTRI.RF1**  
 PI STA. = 4+77.23  
 $\Delta = 37^\circ 42' 09''$  (RT)  
 D = 4' 05' 57"  
 R = 1,397.76'  
 T = 477.23'  
 L = 919.77'  
 E = 79.22'  
 P.C. STA. = 0+00.00  
 P.C.C. STA. = 9+19.77

**EXIST. RAMP G  
CURVE NTRI.RG**  
 PI STA. = 7+19.90  
 $\Delta = 82^\circ 21' 33''$  (RT)  
 D = 6' 57' 45"  
 R = 822.93'  
 T = 719.90'  
 L = 1,182.91'  
 E = 270.45'  
 P.C. STA. = 0+00.00  
 P.T. STA. = 11+82.91

**CONTROL POINTS**

CONTROL POINT	COORDINATE	
	NORTHING	EASTING
6020	904358.16	936735.75
6021	904711.11	938174.72
6023	904591.00	935681.48



**PROPOSED NORTH TRI LEVEL ROADWAY A**

DESCRIPTION	COORDINATE	
	NORTHING	EASTING
POT STA 2339+00.00	903465.93	931769.23
POT STA 2340+00.00	903485.60	931867.27
PC STA 2340+87.67	903502.84	931953.23
PI STA 2347+98.08	903642.59	932649.76
PT STA 2355+01.91	903941.13	933294.39
PC STA 2356+60.34	904007.71	933438.16
PI STA 2370+35.89	904585.77	934686.35
PT STA 2383+60.34	904534.15	936060.93
PC STA 2385+00.69	904528.89	936201.19
PI STA 2391+78.84	904503.44	936878.85
PT STA 2398+50.69	904636.90	937543.73

**PROPOSED NORTH TRI LEVEL RAMP F**

DESCRIPTION	COORDINATE	
	NORTHING	EASTING
PC STA 6+80.26	904348.74	934847.66
PI STA 8+40.81	904275.73	934990.65
PCC STA 10+00.00	904236.57	935146.36
PCC STA 10+00.00	904236.57	935146.36
PI STA 12+92.53	904165.23	935430.05
PT STA 15+76.21	904217.25	935717.91
POT STA 21+91.22	904326.63	936323.11

**EXISTING NORTH TRI LEVEL ROADWAY A**

DESCRIPTION	COORDINATE	
	NORTHING	EASTING
PC STA 2341+68.91	903530.29	932030.56
PI STA 2348+47.05	903663.74	932695.44
PT STA 2355+18.91	903948.72	933310.79
PC STA 2356+60.34	904007.71	933438.16
PI STA 2370+35.89	904585.77	934686.35
PT STA 2383+60.34	904534.15	936060.93
PC STA 2385+00.69	904528.89	936201.19
PI STA 2391+78.84	904503.44	936878.85
PT STA 2398+50.69	904636.90	937543.73

**EXISTING NORTH TRI LEVEL RAMP G**

DESCRIPTION	COORDINATE	
	NORTHING	EASTING
PC STA 0+00.00	904569.89	935891.51
PI STA 7+19.90	904680.46	935180.15
PT STA 11+82.91	905400.21	935195.16

**GROUND COORDINATES FOR PERMANENT SURVEY MARKERS**

DESCRIPTION	COORDINATE	
	NORTHING	EASTING
<b>ROADWAY A</b>		
PT STA 2383+60.34	904534.15	936060.93
PC STA 2385+00.69	904528.89	936201.19
PCC STA 2392+00.00	904545.30	936899.87
PT STA 2398+50.69	904636.90	937543.73
<b>ROADWAY B</b>		
POT STA 2381+00.00	904217.66	935902.10
POT STA 2390+00.00	904394.76	936784.51
POT STA 2397+00.73	904532.65	937471.53
<b>RAMP F</b>		
PT STA 15+76.21	904217.25	935717.91
POT STA 21+91.22	904326.63	936323.12
<b>RAMP G</b>		
PC STA 10+00.00	904544.64	936694.67
PT STA 12+15.39	904548.87	936479.39
PC STA 12+99.13	904553.86	936395.79
PT STA 16+58.88	904583.21	936037.27
PC STA 17+98.88	904597.70	935898.02
<b>I 70E</b>		
POT STA 2397+00.73	904575.79	937462.88

**PROPOSED NORTH TRI LEVEL ROADWAY B**

DESCRIPTION	COORDINATE	
	NORTHING	EASTING
POT STA 2341+50.00	903440.59	932029.29
POT STA 2343+65.00	903482.88	932240.09
POT STA 2372+66.30	904053.60	935084.70
POT STA 2397+00.73	904532.65	937471.53

**PROPOSED NORTH TRI LEVEL RAMP G**

DESCRIPTION	COORDINATE	
	NORTHING	EASTING
PC STA 10+00.00	904544.64	936694.67
PI STA 11+07.75	904542.44	936586.94
PT STA 12+15.39	904548.87	936479.39
PC STA 12+99.13	904553.86	936395.79
PI STA 14+79.04	904564.60	936216.20
PT STA 16+58.88	904583.21	936037.27
PC STA 17+98.88	904597.70	935898.02
PI STA 21+49.91	904634.02	935548.87
PT STA 24+57.82	904920.95	935346.67

**EXISTING NORTH TRI LEVEL RAMP F**

DESCRIPTION	COORDINATE	
	NORTHING	EASTING
PC STA 0+00.00	904215.28	935757.05
PI STA 4+77.23	904121.10	935289.21
PCC STA 9+19.77	904332.70	934861.45
PC STA 9+19.77	904332.70	934861.45
PI STA 15+63.72	904618.22	934284.26
PT STA 19+60.65	905216.95	934521.30

**EXISTING & PROPOSED FAI 70 EAST**

DESCRIPTION	COORDINATE	
	NORTHING	EASTING
POT STA 2397+00.73	904575.79	937462.87
POT STA 2416+99.66	904969.17	939422.71
POT STA 2437+00.92	905362.54	941384.93

**EXISTING 1650TH STREET**

DESCRIPTION	COORDINATE	
	NORTHING	EASTING
POT STA 45+00.00	905247.48	938322.09
POT STA 50+00.00	904747.50	938318.33
POT STA 55+00.00	904247.51	938314.57

BENCHMARK \* 4:  
 CHISELED SQUARE SOUTH CONCRETE FOUNDATION  
 TO OVERHEAD SIGN TRUSS I-70 WB  
 APPROXIMATE STA. 2383+00.00 RT  
 ELEV 605.28

PERMANENT SURVEY MARKER

