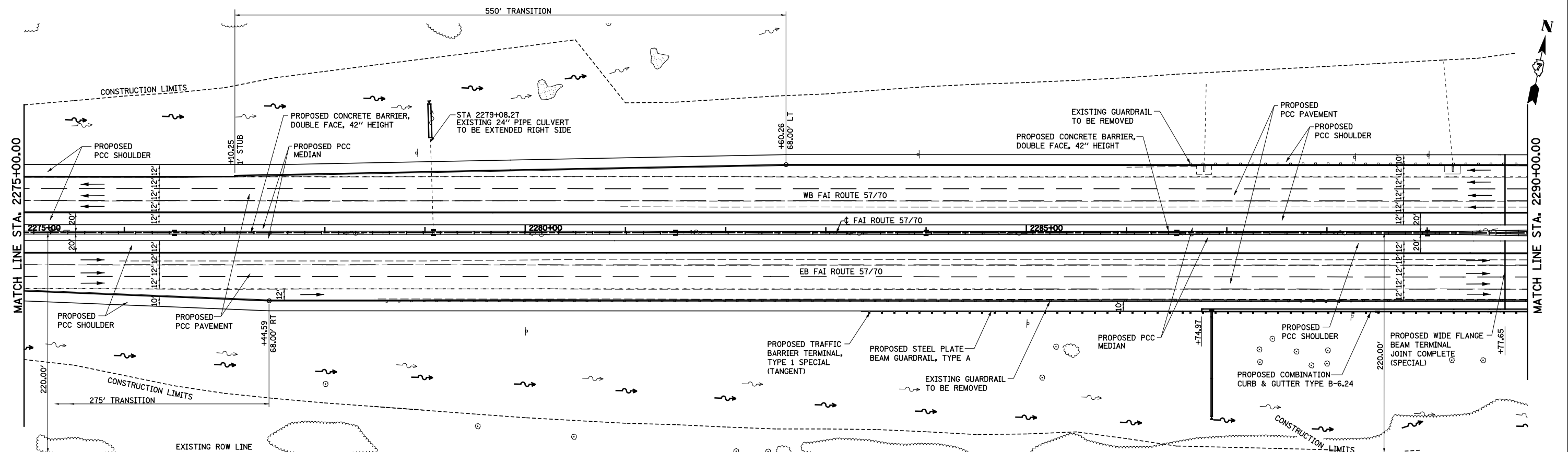
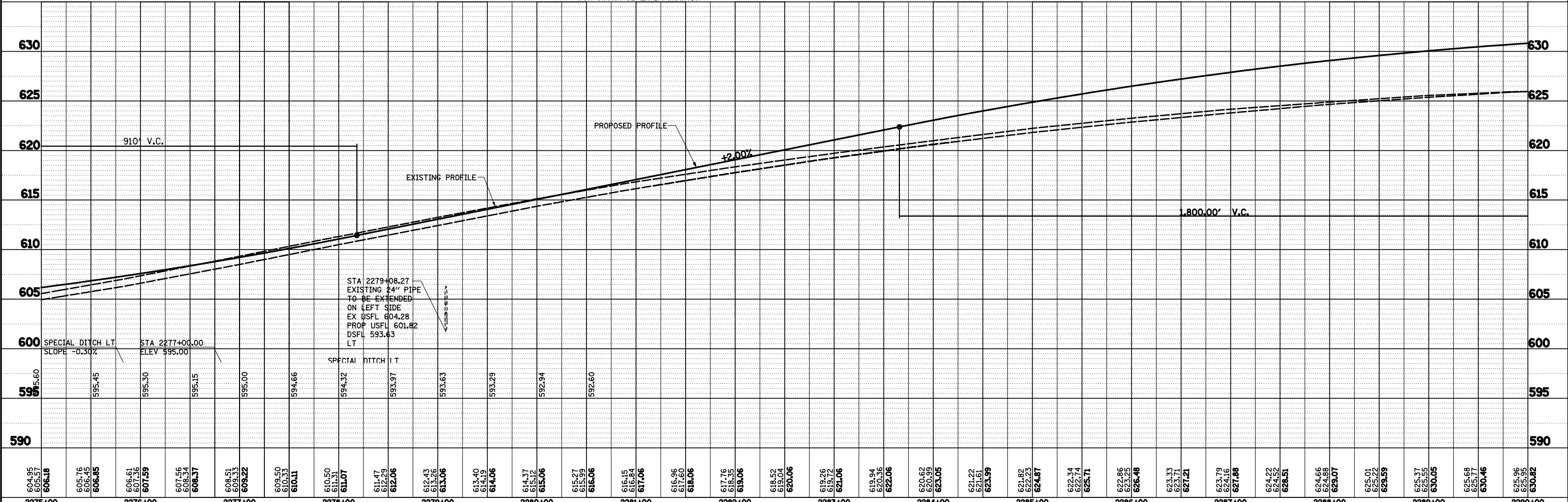
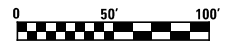


PLAN	SURVEYED	DATE
	PLOTTED	
	GRADES CHECKED	
	ALIGNMENT CHECKED	
	STRUCTURE NOTATIONS CHECKED	
	NOTE BOOK NO.	
	FILE NAME	

PROFILE	SURVEYED	DATE
	PLOTTED	
	GRADES CHECKED	
	ALIGNMENT CHECKED	
	STRUCTURE NOTATIONS CHECKED	
	NOTE BOOK NO.	
	FILE NAME	



FOR CLARITY THE PROPOSED STORM SEWERS HAVE NOT BEEN PRESENTED ON THE ROADWAY PLAN AND PROFILE SHEETS. SEE DRAINAGE SHEETS FOR STORM SEWER INFORMATION



FILE NAME =	USER NAME = *USER*	DESIGNED - JWS	REVISED -
S:\Projects\403-00072-57-70\dwg\N Tr\LV\PP_NTR1570.dgn		DRAWN - PDB	REVISED -
		CHECKED - BRM	REVISED -
		DATE - 6-5-08	REVISED -

STATE OF ILLINOIS
DEPARTMENT OF TRANSPORTATION

PLAN AND PROFILE, FAI ROUTE 57/70		F.A.I. RTE.	SECTION	COUNTY	TOTAL SHEETS	SHEET NO.
SCALE: 1"=50'		57/70	(25-4R)	EFFINGHAM	1760	106
SHEET NO. 2 OF 11 SHEETS		CONTRACT NO. 74295		FED. ROAD DIST. NO. ILLINOIS FED. AID PROJECT		