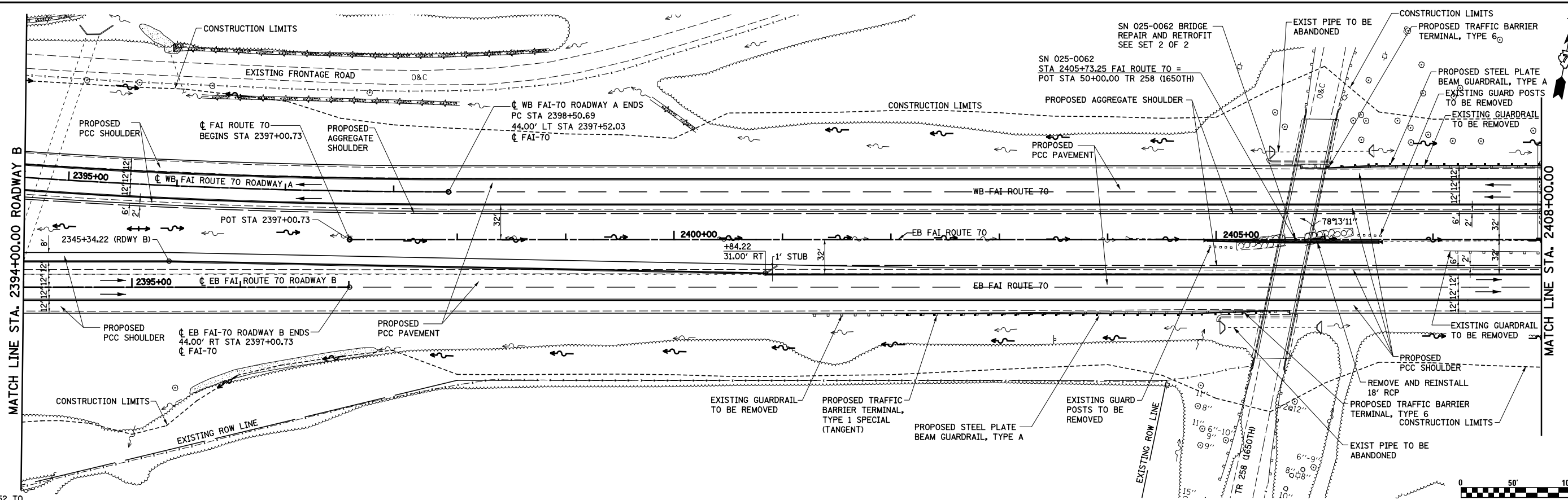
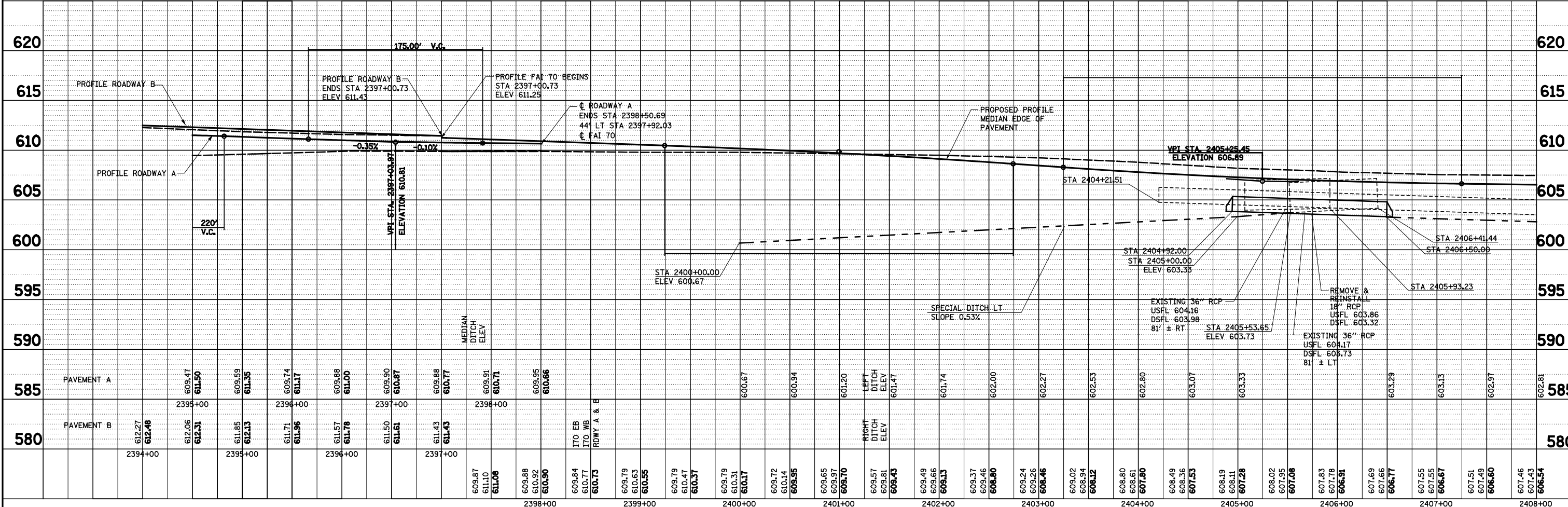


PLAN	SURVEYED	BY	DATE
	PLOTTED		
	ALIGNED		
	CHECKED		
	DESIGNED		
	NO. _____		
	FILE NAME		

PROP. ROADWAY A CURVE C126
 PI STA. = 2391+78.84
 $\Delta = 13^\circ 30' 00''$ (LT)
 $D = 1^\circ 00' 00''$
 $R = 5,729.58'$
 $T = 678.14'$
 $L = 1,350.00'$
 $E = 39.99'$
 $\phi = 3.34\%$
 $T.R. = 167.50'$
 $S.E. RUN = 1,150.30'$
 $P.C. STA. = 2385+00.69$
 $P.T. STA. = 2398+50.69$
 SE ATTAINED STA. 2384+30.52 TO
 STA 2385+34.09 (0.00% TO 3.34%)
 SE REMOVED STA. 2398+00.59 TO
 STA 2399+59.73 (170E) (3.34% TO 1.50%)



PROFILE	SURVEYED	BY	DATE
	PLOTTED		
	GRADES CHECKED		
	STRUCTURE		
	NOT AT THIS OFFICE		
	NO. _____		



FILE NAME =	USER NAME = *USER*	DESIGNED - JWS	REVISED -	STATE OF ILLINOIS DEPARTMENT OF TRANSPORTATION	PLAN AND PROFILE, NORTH TRI LEVEL FAI ROUTE 70	F.A.I. RTE.	SECTION	COUNTY	TOTAL SHEETS	SHEET NO.	
S:\Projects\403-00072-57-70\pdp\N TriLv\PP_NTri1570.dgn	PLOT SCALE = *SCALE*	DRAWN - PDB	REVISED -			57/70	(25-4R)	EFFINGHAM	1760	114	
PLOT DATE = *DATE*	DATE - 6-5-08	CHECKED - BRM	REVISED -			CONTRACT NO. 74295					
		DATE - 6-5-08	REVISED -			SCALE: 1"=50'	SHEET NO. 10 OF 11 SHEETS	STA. 2394+00.00 TO STA. 2408+00.00	FED. ROAD DIST. NO.	ILLINOIS FED. AID PROJECT	