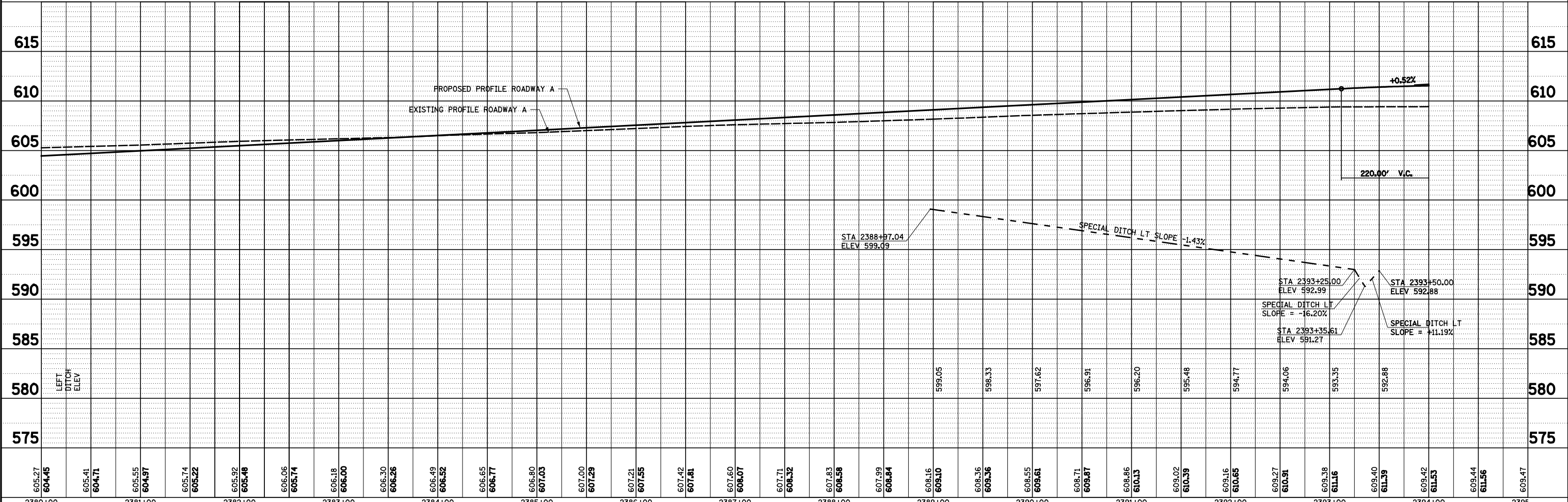
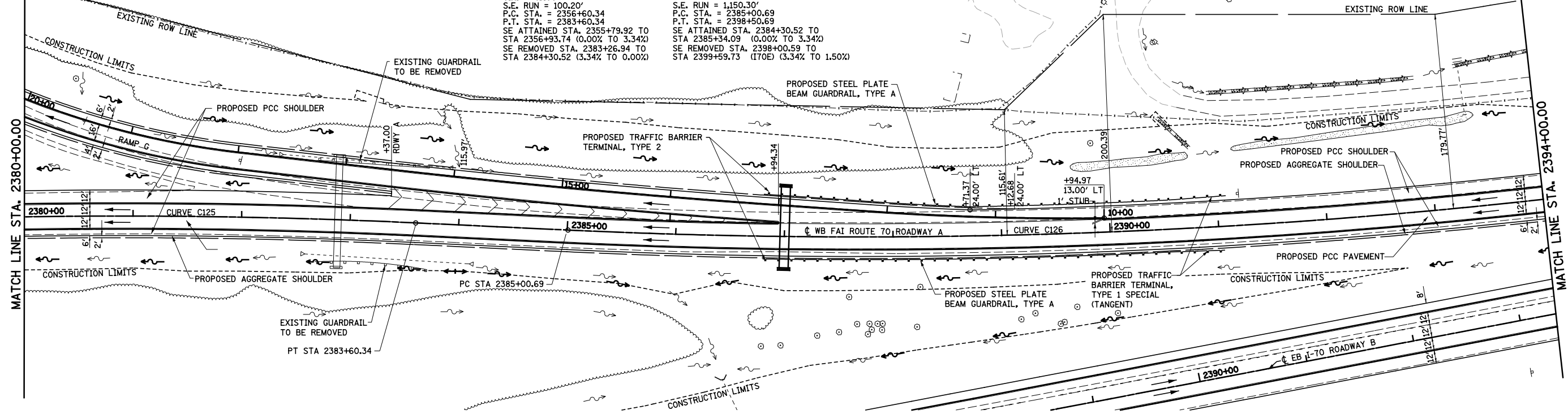


PLAN	SURVEYED	DATE
	PLOTTED	BY
	NOTE BOOK	
	NO.	
	FILE NAME	

PROFILE	SURVEYED	DATE
	PLOTTED	BY
	GRADES CHECKED	
	STRUCTURE	
	NOTATIONS CHECKED	
	NO.	

**PROP. ROADWAY A
CURVE C125**
 PI STA. = 2370+35.89
 $\Delta = 27^\circ 00' 00''$ (RT)
 D = $1^\circ 00' 00''$
 R = 5,729.58'
 L = 1,375.55'
 E = 162.81'
 $e = 3.34\%$
 T.R. = 45.00'
 S.E. RUN = 100.20'
 P.C. STA. = 2356+60.34
 P.T. STA. = 2383+60.34
 SE ATTAINED STA. 2355+79.92 TO
 STA 2356+93.74 (0.00% TO 3.34%)
 SE REMOVED STA. 2383+26.94 TO
 STA 2384+30.52 (3.34% TO 0.00%)

**PROP. ROADWAY A
CURVE C126**
 PI STA. = 2391+78.84
 $\Delta = 13^\circ 30' 00''$ (LT)
 D = $1^\circ 00' 00''$
 R = 5,729.58'
 L = 678.14'
 E = 1,350.00'
 $e = 3.34\%$
 T.R. = 167.50'
 S.E. RUN = 1,150.30'
 P.C. STA. = 2385+00.69
 P.T. STA. = 2398+50.69
 SE ATTAINED STA. 2384+30.52 TO
 STA 2385+34.09 (0.00% TO 3.34%)
 SE REMOVED STA. 2398+00.59 TO
 STA 2399+59.73 (170E) (3.34% TO 1.50%)



FILE NAME =	USER NAME = *USER*	DESIGNED - JWS	REVISED -	F.A.I. RTE.	SECTION	COUNTY	TOTAL SHEETS	SHEET NO.
S:\Projects\403-00072-57-70\ dgn\N TriLv\PP_NTri1570.dgn		DRAWN - PDB	REVISED -	57/70	(25-4R)	EFFINGHAM	1760	129
PLOT SCALE = *SCALE*		CHECKED - BRM	REVISED -	CONTRACT NO. 74295				
PLOT DATE = *DATE*		DATE - 6-5-08	REVISED -	SCALE: 1"=50'				
				SHEET NO. 3 OF 18 SHEETS		STA. 2380+00.00 TO STA. 2394+00.00		FED. ROAD DIST. NO.
						ILLINOIS FED. AID PROJECT		

STATE OF ILLINOIS
DEPARTMENT OF TRANSPORTATION

PLAN AND PROFILE, NORTH TRI LEVEL ROADWAY A

