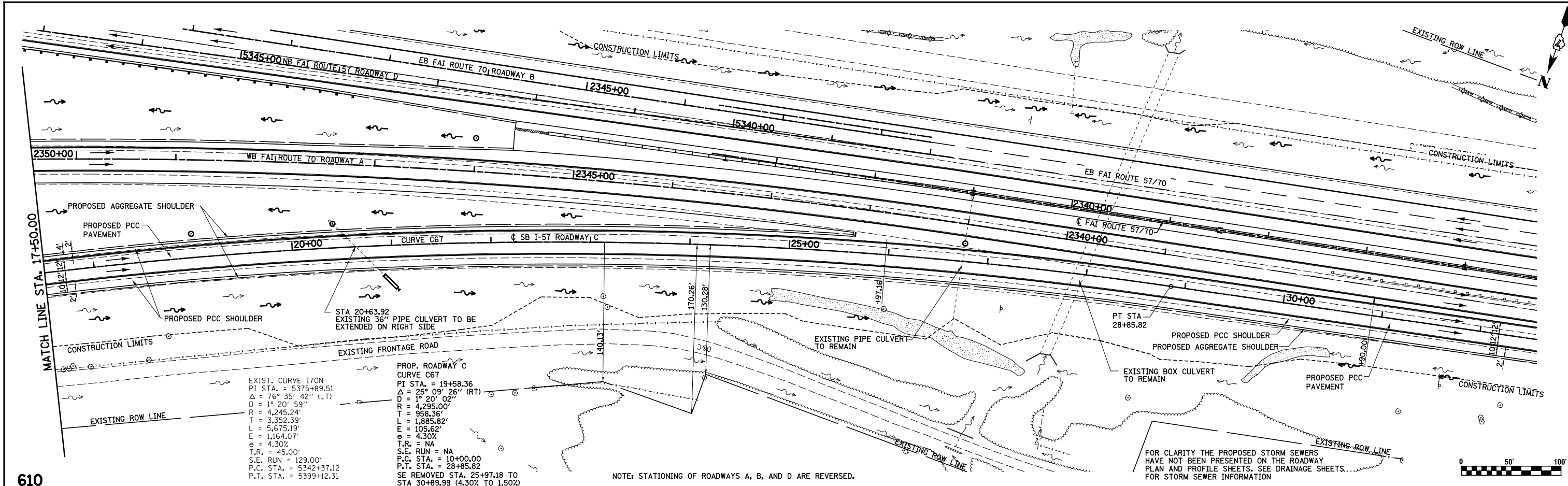


PLAN	SURVEYED	DATE
	PLOTTED	
	ALIGNED	
	CHECKED	
	DESIGNED	
	BY	
	NO.	

PROFILE	SURVEYED	DATE
	PLOTTED	
	GRADES	
	CHECKED	
	STRUCTURE	
	NOTATIONS	
	BY	
	NO.	

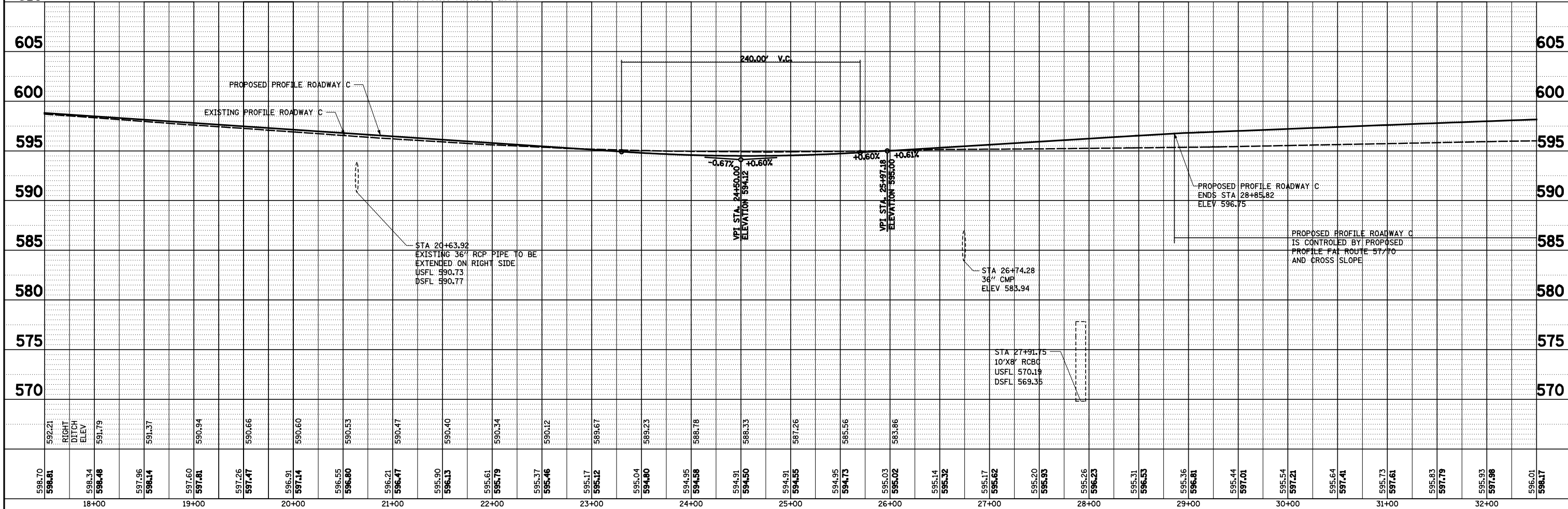


EXIST. CURVE 170N
 PI STA. = 5375+89.51
 $\Delta = 76^\circ 35' 42''$ (LT)
 $D = 1^\circ 20' 59''$
 $R = 4,245.24'$
 $T = 3,352.33'$
 $L = 5,675.19'$
 $E = 1,164.07'$
 $\theta = 4.30\%$
 $T.R. = 45.00'$
 $S.E. RUN = 129.00'$
 $P.C. STA. = 5342+37.12$
 $P.T. STA. = 5399+12.31$

PROP. ROADWAY C
 CURVE C67
 PI STA. = 19+58.36
 $\Delta = 25^\circ 09' 26''$ (RT)
 $D = 1^\circ 20' 02''$
 $R = 4,295.00'$
 $T = 958.36'$
 $L = 1,885.82'$
 $E = 405.62'$
 $\theta = 4.30\%$
 $T.R. = NA$
 $S.E. RUN = NA$
 $P.C. STA. = 10+00.00$
 $P.T. STA. = 28+85.82$
 $SE REMOVED STA. 25+97.18 TO STA 30+89.99 (4.30% TO 1.50%)$

NOTE: STATIONING OF ROADWAYS A, B, AND D ARE REVERSED.

FOR CLARITY THE PROPOSED STORM SEWERS HAVE NOT BEEN PRESENTED ON THE ROADWAY PLAN AND PROFILE SHEETS. SEE DRAINAGE SHEETS. FOR STORM SEWER INFORMATION



FILE NAME =	USER NAME = *USER*	DESIGNED - JWS	REVISED -	STATE OF ILLINOIS DEPARTMENT OF TRANSPORTATION	PLAN AND PROFILE, NORTH TRI LEVEL ROADWAY C	F.A.I. RTE.	SECTION	COUNTY	TOTAL SHEETS	SHEET NO.
S:\Projects\403-00072-57-70\ dgn\ N Tri Level PP_NTri1570.dgn		DRAWN - PDB	REVISED -			57/70	(25-4R)	EFFINGHAM	1760	131
		CHECKED - BRM	REVISED -			CONTRACT NO. 74295				
		DATE - 6-5-08	REVISED -			FED. ROAD DIST. NO. ILLINOIS FED. AID PROJECT				