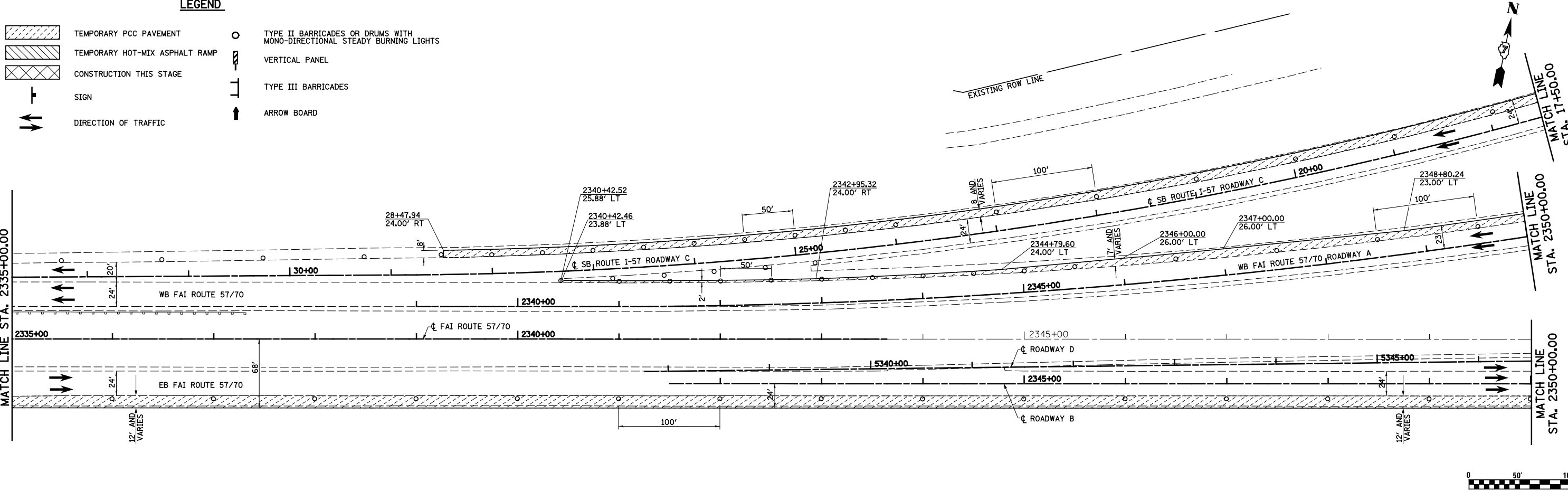


LEGEND

- TEMPORARY PCC PAVEMENT
- TEMPORARY HOT-MIX ASPHALT RAMP
- CONSTRUCTION THIS STAGE
- SIGN
- DIRECTION OF TRAFFIC
- TYPE II BARRICADES OR DRUMS WITH MONO-DIRECTIONAL STEADY BURNING LIGHTS
- VERTICAL PANEL
- TYPE III BARRICADES
- ARROW BOARD



FILE NAME = S:\Projects\03-2007\251-70\dm\1\Trk\West_P5.dgn	USER NAME = *USER*	DESIGNED - JWS	REVISED -	STATE OF ILLINOIS DEPARTMENT OF TRANSPORTATION	MAINTENANCE OF TRAFFIC, PRE-STAGE 1, NORTH TRI LEVEL			F.A.I. RTE. 57/70	SECTION (25-4R)	COUNTY EFFINGHAM	TOTAL SHEETS 1760	SHEET NO. 165
PLOT SCALE = *SCALE*		CHECKED - BRM	REVISED -		SCALE: 1"=50'	SHEET NO. 10 OF 18 SHEETS	STA. 2320+00.00 TO STA. 2350+00.00	CONTRACT NO. 74295				
PLOT DATE = *DATE*		DATE - 3-31-08	REVISED -		FED. ROAD DIST. NO. ILLINOIS FED. AID PROJECT							