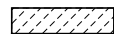

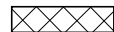






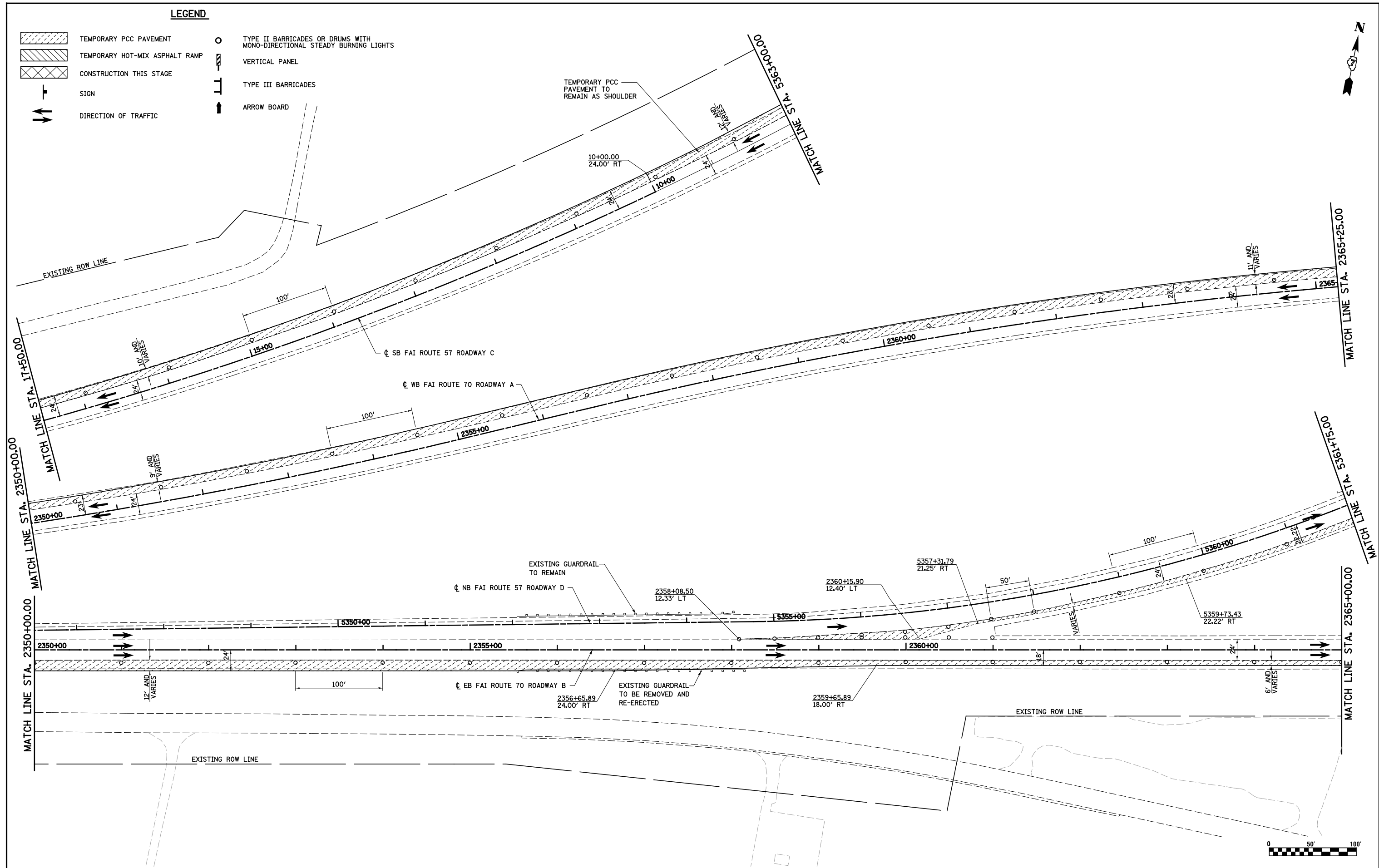


**LEGEND**

-  TEMPORARY PCC PAVEMENT
-  TEMPORARY HOT-MIX ASPHALT RAMP
-  CONSTRUCTION THIS STAGE
-  SIGN
-  DIRECTION OF TRAFFIC
-  TYPE II BARRICADES OR DRUMS WITH MONO-DIRECTIONAL STEADY BURNING LIGHTS
-  VERTICAL PANEL
-  TYPE III BARRICADES
-  ARROW BOARD



FILE NAME =  
S:\Projects\403-00072-57-70\dm\W Tr\IL\m01\_PS.dgn

USER NAME = \*USER\*  
PLOT SCALE = \*SCALE\*  
PLOT DATE = \*DATE\*

DESIGNED - JWS  
DRAWN - MAB  
CHECKED - BRM  
DATE - 3-04-08

REVISED -  
REVISED -  
REVISED -  
REVISED -

**STATE OF ILLINOIS  
DEPARTMENT OF TRANSPORTATION**

**MAINTENANCE OF TRAFFIC, PRE-STAGE 1, NORTH TRI LEVEL**

SCALE: 1"=50' SHEET NO. 11 OF 18 SHEETS STA. 2350+00.00 TO STA. 2365+00.00

F.A.I. RTE.	SECTION	COUNTY	TOTAL SHEETS	SHEET NO.
57/70	(25-4R)	EFFINGHAM	1760	166
FED. ROAD DIST. NO.			ILLINOIS FED. AID PROJECT	
			CONTRACT NO. 74295	