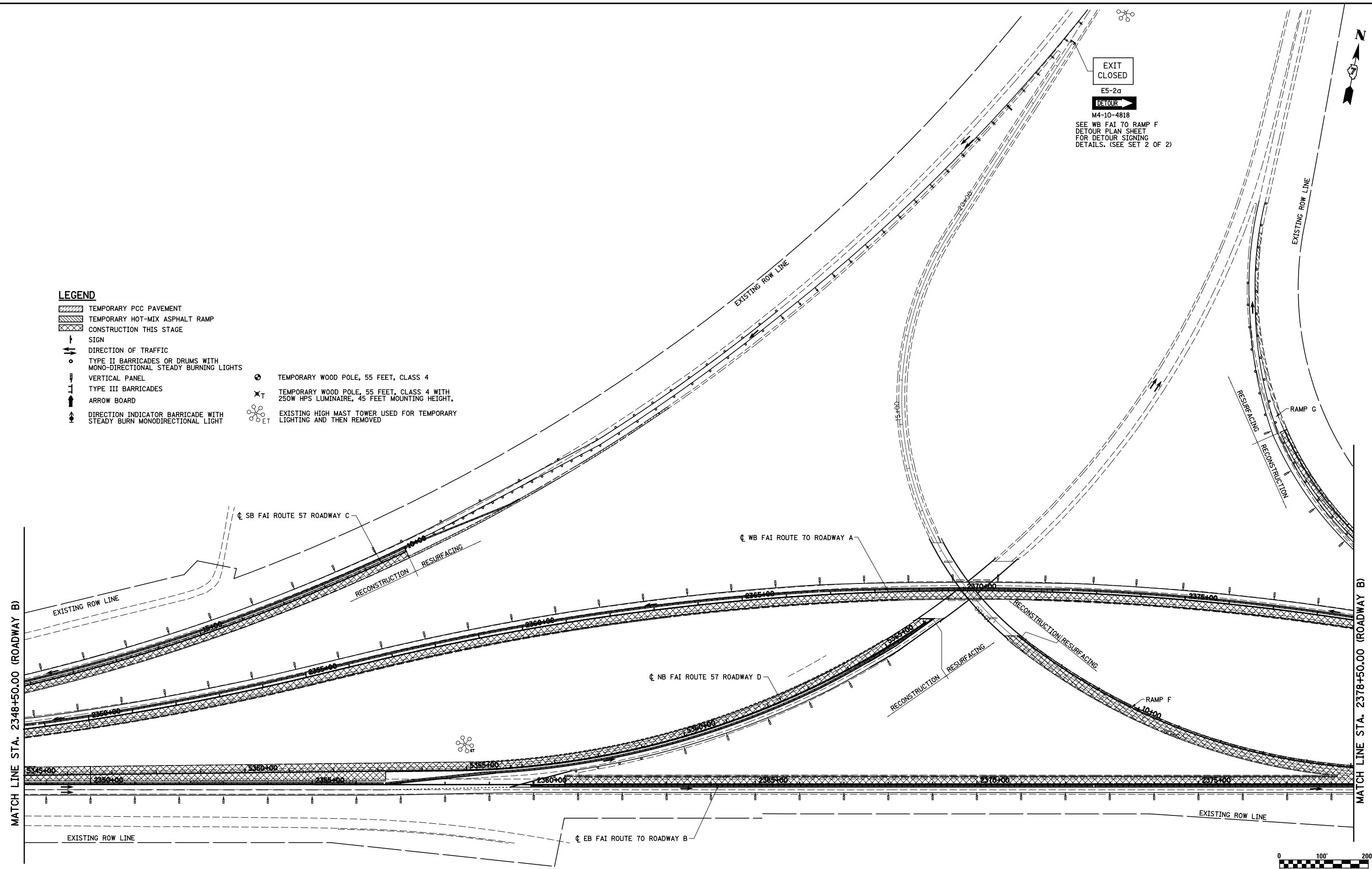




EXIT CLOSED
 E5-2a
 DETOUR
 M4-10-4818
 SEE WB FAI TO RAMP F
 DETOUR PLAN SHEET
 FOR DETOUR SIGNING
 DETAILS. (SEE SET 2 OF 2)

LEGEND

- TEMPORARY PCC PAVEMENT
- TEMPORARY HOT-MIX ASPHALT RAMP
- CONSTRUCTION THIS STAGE
- SIGN
- DIRECTION OF TRAFFIC
- TYPE II BARRICADES OR DRUMS WITH MONO-DIRECTIONAL STEADY BURNING LIGHTS
- VERTICAL PANEL
- TYPE III BARRICADES
- ARROW BOARD
- DIRECTION INDICATOR BARRICADE WITH STEADY BURN MONODIRECTIONAL LIGHT
- TEMPORARY WOOD POLE, 55 FEET, CLASS 4
- TEMPORARY WOOD POLE, 55 FEET, CLASS 4 WITH 250W HPS LUMINAIRE, 45 FEET MOUNTING HEIGHT,
- EXISTING HIGH MAST TOWER USED FOR TEMPORARY LIGHTING AND THEN REMOVED



FILE NAME =	USER NAME = \$USER\$	DESIGNED - JWS	REVISED -	STATE OF ILLINOIS DEPARTMENT OF TRANSPORTATION	MAINTENANCE OF TRAFFIC, STAGE 1, GENERAL LAYOUT	F.A.I. RTE.	SECTION	COUNTY	TOTAL SHEETS	SHEET NO.	
		DRAWN - PDB	REVISED -			57/70	(25-4R)	EFFINGHAM	1760	177	
		CHECKED - BRM	REVISED -			CONTRACT NO. 74295					
		DATE - 6-25-08	REVISED -			SCALE: 1"=100' SHEET NO. 4 OF 18 SHEETS STA. 2084+00.00 TO STA. 2103+00.00 FED. ROAD DIST. NO. ILLINOIS FED. AID PROJECT					