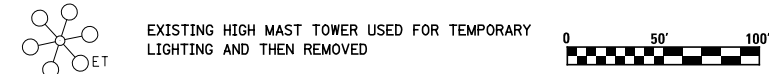


W1-4bR(0)-48
55
MPH
W13-1(O)2424

- LEGEND**
- TEMPORARY PCC PAVEMENT
 - TEMPORARY HOT-MIX ASPHALT RAMP
 - CONSTRUCTION THIS STAGE
 - SIGN
 - DIRECTION OF TRAFFIC
 - DIRECTION INDICATOR BARRICADE WITH STEADY BURN MONODIRECTIONAL LIGHT
 - TYPE II BARRICADES OR DRUMS WITH MONO-DIRECTIONAL STEADY BURNING LIGHTS
 - VERTICAL PANEL
 - TEMPORARY WOOD POLE, 55 FEET, CLASS 4
 - TEMPORARY WOOD POLE, 55 FEET, CLASS 4 WITH 250W HPS LUMINAIRE, 45 FEET MOUNTING HEIGHT,
 - TYPE III BARRICADES
 - ARROW BOARD



FILE NAME =	USER NAME = \$USER\$	DESIGNED - JWS	REVISED -
Sn\Projects\403-00072-57-70\dgn\W Tr\LV\mot_1.sxdn		DRAWN - MAB	REVISED -
PLOT SCALE = \$SCALE\$		CHECKED - BRM	REVISED -
PLOT DATE = \$DATE\$		DATE - 8-6-08	REVISED -

**STATE OF ILLINOIS
DEPARTMENT OF TRANSPORTATION**

MAINTENANCE OF TRAFFIC, STAGE 1, NORTH TRI LEVEL

SCALE: 1"=50' SHEET NO. 7 OF 18 SHEETS STA. 2260+00.00 TO STA. 2290+00.00

F.A.I. RTE.	SECTION	COUNTY	TOTAL SHEETS	SHEET NO.
57/70	(25-4)R	EFFINGHAM	1760	180
CONTRACT NO. 74295				
FED. ROAD DIST. NO. ILLINOIS FED. AID PROJECT				