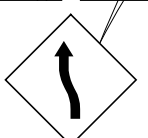
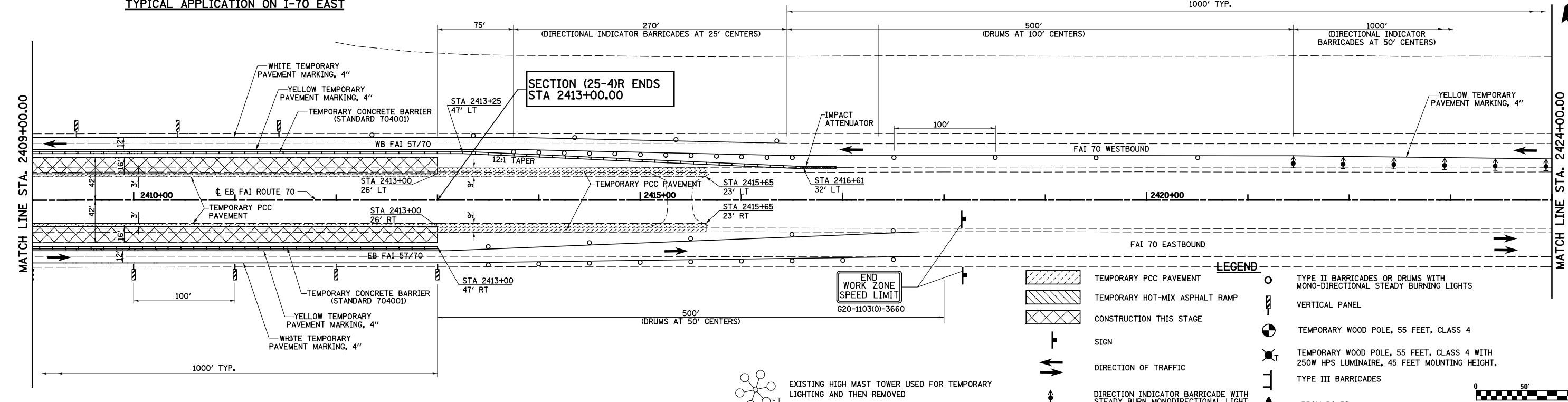


TYPICAL APPLICATION ON I-70 EAST



W1-4L(O)-48
55 MPH
W13-1(O)2424



- LEGEND**
- TEMPORARY PCC PAVEMENT
 - TEMPORARY HOT-MIX ASPHALT RAMP
 - CONSTRUCTION THIS STAGE
 - SIGN
 - DIRECTION OF TRAFFIC
 - DIRECTION INDICATOR BARRICADE WITH STEADY BURN MONODIRECTIONAL LIGHT
 - TYPE II BARRICADES OR DRUMS WITH MONO-DIRECTIONAL STEADY BURNING LIGHTS
 - VERTICAL PANEL
 - TEMPORARY WOOD POLE, 55 FEET, CLASS 4
 - TEMPORARY WOOD POLE, 55 FEET, CLASS 4 WITH 250W HPS LUMINAIRE, 45 FEET MOUNTING HEIGHT,
 - TYPE III BARRICADES
 - ARROW BOARD



FILE NAME =
s:\projector\007257-70.dgn\15 Trk\1\pkm.sld.dgn

USER NAME = #USER#	DESIGNED - JWS	REVISED -
PLOT SCALE = #SCALE#	DRAWN - MAB	REVISED -
PLOT DATE = #DATE#	CHECKED - BRM	REVISED -
	DATE - 8-06-08	REVISED -

STATE OF ILLINOIS
DEPARTMENT OF TRANSPORTATION

MAINTENANCE OF TRAFFIC, STAGE 1, FAI ROUTE 70
SCALE: 1"=50' SHEET NO. 14 OF 18 SHEETS STA. 2394+00.00 TO STA. 2424+00.00

F.A.I. RTE.	SECTION	COUNTY	TOTAL SHEETS	SHEET NO.
57/70	(25-4R)	EFFINGHAM	1760	187
CONTRACT NO. 74295				
FED. ROAD DIST. NO.	ILLINOIS FED. AID PROJECT			