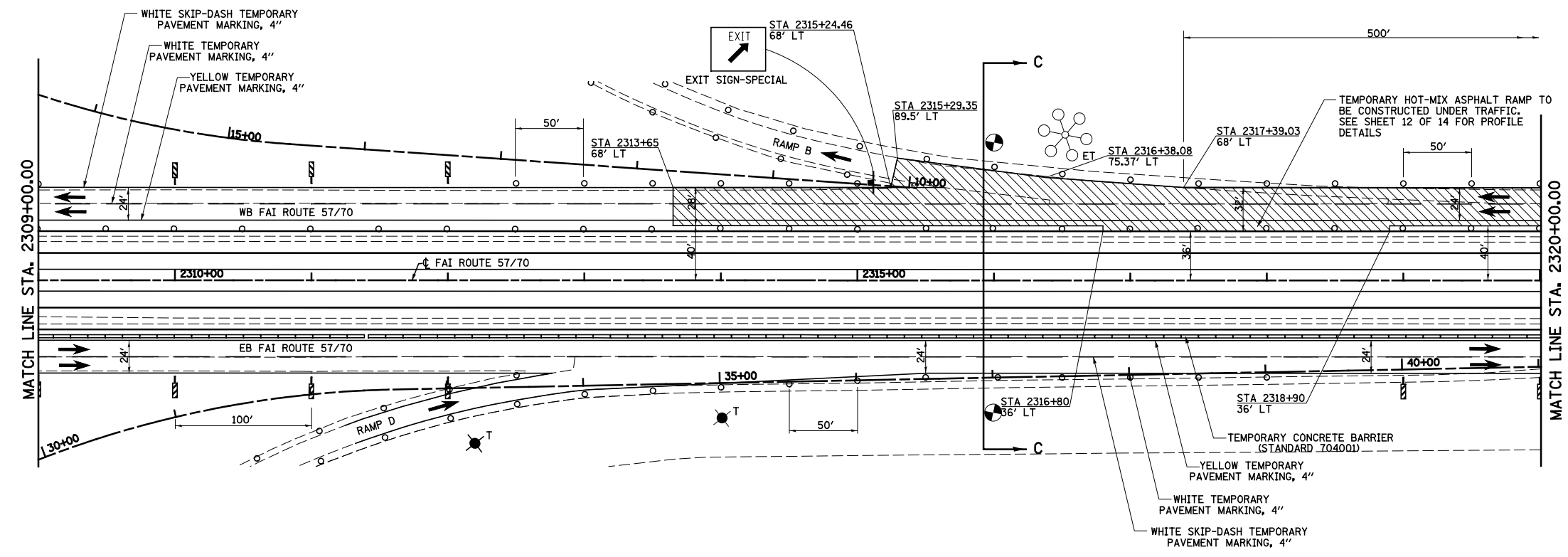
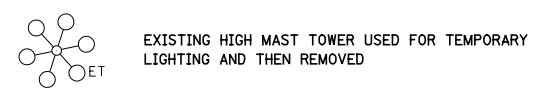


SECTION C-C • FOR PROFILE DETAILS, SEE SHEET 12 OF 14



- LEGEND**
- TEMPORARY PCC PAVEMENT
 - TEMPORARY HOT-MIX ASPHALT RAMP
 - CONSTRUCTION THIS STAGE
 - SIGN
 - DIRECTION OF TRAFFIC
 - DIRECTION INDICATOR BARRICADE WITH STEADY BURN MONODIRECTIONAL LIGHT
 - TYPE II BARRICADES OR DRUMS WITH MONO-DIRECTIONAL STEADY BURNING LIGHTS
 - VERTICAL PANEL
 - TEMPORARY WOOD POLE, 55 FEET, CLASS 4
 - TEMPORARY WOOD POLE, 55 FEET, CLASS 4 WITH 250W HPS LUMINAIRE, 45 FEET MOUNTING HEIGHT,
 - TYPE III BARRICADES
 - ARROW BOARD



FILE NAME =	USER NAME = \$USER*	DESIGNED - JWS	REVISED -	STATE OF ILLINOIS DEPARTMENT OF TRANSPORTATION	MAINTENANCE OF TRAFFIC, STAGE 1B, NORTH TRI LEVEL	F.A.I. RTE.	SECTION	COUNTY	TOTAL SHEETS	SHEET NO.	
\$Project\03\2007\257-70\drp\1\Trk\West_Sb.dwg		DRAWN - MAB	REVISED -			57/70	(25-4)R	EFFINGHAM	1760	197	
		CHECKED - BRM	REVISED -			CONTRACT NO. 74295					
		DATE - 8-06-08	REVISED -			FED. ROAD DIST. NO. ILLINOIS FED. AID PROJECT					
				SCALE: 1"=50'	SHEET NO. 6 OF 14 SHEETS	STA. 2260+00.00 TO STA. 2320+00.00					