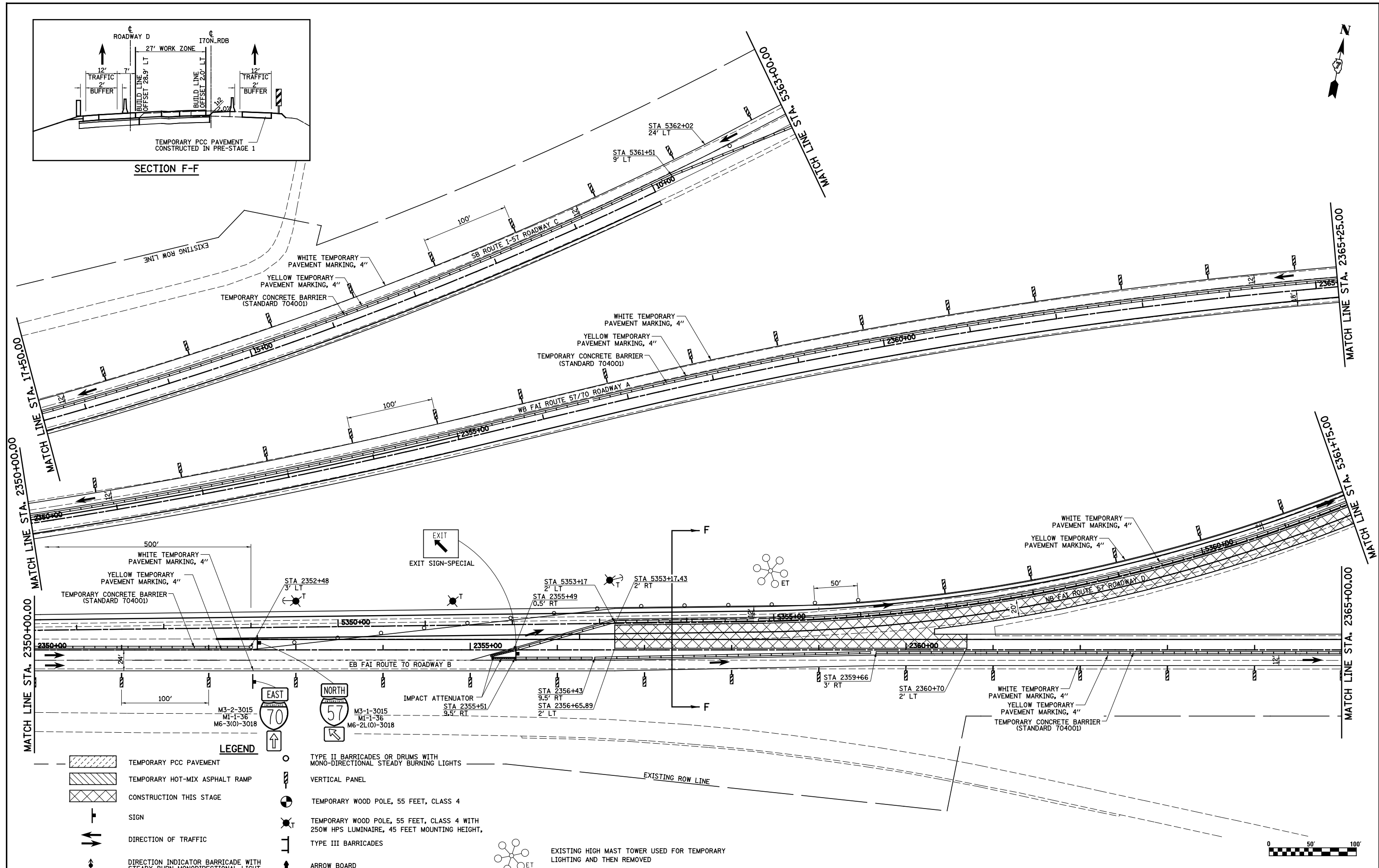


SECTION F-F



- LEGEND**
- TEMPORARY PCC PAVEMENT
 - TEMPORARY HOT-MIX ASPHALT RAMP
 - CONSTRUCTION THIS STAGE
 - SIGN
 - DIRECTION OF TRAFFIC
 - DIRECTION INDICATOR BARRICADE WITH STEADY BURN MONODIRECTIONAL LIGHT
 - TYPE II BARRICADES OR DRUMS WITH MONO-DIRECTIONAL STEADY BURNING LIGHTS
 - VERTICAL PANEL
 - TEMPORARY WOOD POLE, 55 FEET, CLASS 4
 - TEMPORARY WOOD POLE, 55 FEET, CLASS 4 WITH 250W HPS LUMINAIRE, 45 FEET MOUNTING HEIGHT,
 - TYPE III BARRICADES
 - ARROW BOARD
 - EXISTING HIGH MAST TOWER USED FOR TEMPORARY LIGHTING AND THEN REMOVED

FILE NAME =
s:\projector\007257-70.dgn\5 Trk\1\mk.sld.dgn

USER NAME = *USER*	DESIGNED - JWS	REVISED -
PLOT SCALE = *SCALE*	DRAWN - MAB	REVISED -
PLOT DATE = *DATE*	CHECKED - BRM	REVISED -
	DATE - 8-06-08	REVISED -

**STATE OF ILLINOIS
DEPARTMENT OF TRANSPORTATION**

MAINTENANCE OF TRAFFIC, STAGE 1B, NORTH TRI LEVEL

SCALE: 1"=50' SHEET NO. 9 OF 14 SHEETS STA. 2350+00.00 TO STA. 2365+00.00

F.A.I. RTE.	SECTION	COUNTY	TOTAL SHEETS	SHEET NO.
57/70	(25-4)R	EFFINGHAM	1760	200
CONTRACT NO. 74295				
FED. ROAD DIST. NO.	ILLINOIS FED. AID PROJECT			