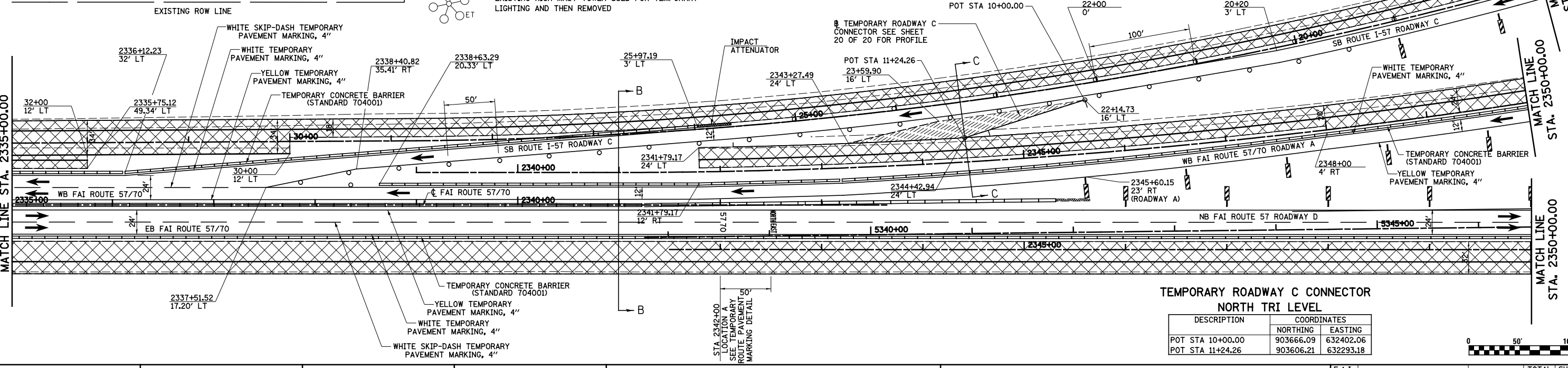
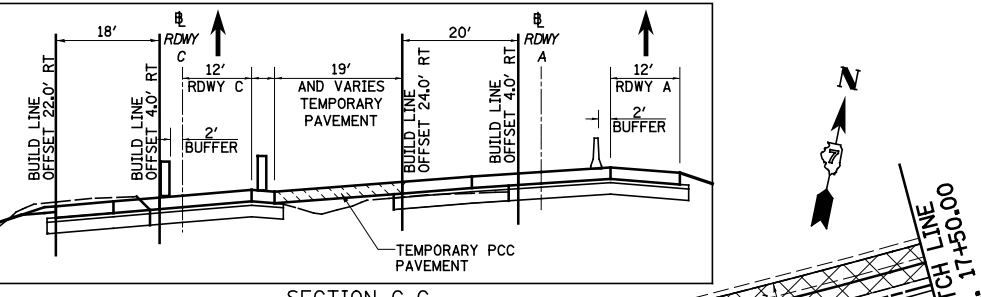
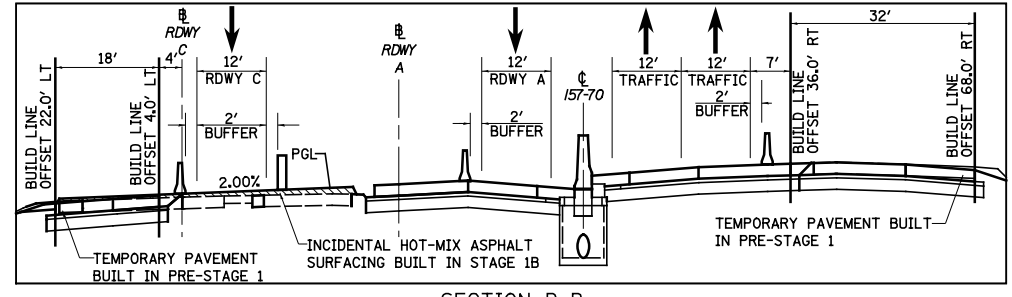


**LEGEND**

- TEMPORARY PCC PAVEMENT
- TEMPORARY HOT-MIX ASPHALT RAMP
- CONSTRUCTION THIS STAGE
- SIGN
- DIRECTION OF TRAFFIC
- DIRECTION INDICATOR BARRICADE WITH STEADY BURN MONODIRECTIONAL LIGHT
- TYPE II BARRICADES OR DRUMS WITH MONO-DIRECTIONAL STEADY BURNING LIGHTS
- VERTICAL PANEL
- TEMPORARY WOOD POLE, 55 FEET, CLASS 4
- TEMPORARY WOOD POLE, 55 FEET, CLASS 4 WITH 250W HPS LUMINAIRE, 45 FEET MOUNTING HEIGHT,
- TYPE III BARRICADES
- ARROW BOARD



**TEMPORARY ROADWAY C CONNECTOR NORTH TRI LEVEL**

DESCRIPTION	COORDINATES	
	NORTHING	EASTING
POT STA 10+00.00	903666.09	632402.06
POT STA 11+24.26	903606.21	632293.18

FILE NAME =	USER NAME = \$USER\$	DESIGNED - JWS	REVISED -
Sn\Projects\403-00072-57-70\dm\W Tr\11\m01_52.dgn		DRAWN - MAB	REVISED -
	PLOT SCALE = \$SCALE\$	CHECKED - BRM	REVISED -
	PLOT DATE = \$DATE\$	DATE - 3-31-08	REVISED -

**STATE OF ILLINOIS  
DEPARTMENT OF TRANSPORTATION**

<b>MAINTENANCE OF TRAFFIC, STAGE 2, NORTH TRI LEVEL</b>		F.A.I. RTE. 57/70	SECTION (25-4R)	COUNTY EFFINGHAM	TOTAL SHEETS 1760	SHEET NO. 225
SCALE: 1"=50'	SHEET NO. 10 OF 20 SHEETS	STA. 2320+00.00 TO STA. 2350+00.00	CONTRACT NO. 74295			
FED. ROAD DIST. NO. ILLINOIS FED. AID PROJECT						