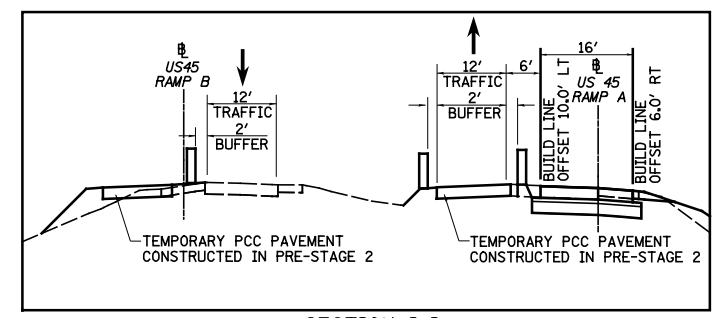
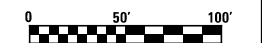
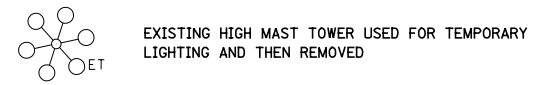


SECTION J-J



SECTION I-I

- LEGEND**
- TEMPORARY PCC PAVEMENT
  - TEMPORARY HOT-MIX ASPHALT RAMP
  - CONSTRUCTION THIS STAGE
  - SIGN
  - DIRECTION OF TRAFFIC
  - DIRECTION INDICATOR BARRICADE WITH STEADY BURN MONODIRECTIONAL LIGHT
  - TYPE II BARRICADES OR DRUMS WITH MONO-DIRECTIONAL STEADY BURNING LIGHTS
  - VERTICAL PANEL
  - TEMPORARY WOOD POLE, 55 FEET, CLASS 4
  - TEMPORARY WOOD POLE, 55 FEET, CLASS 4 WITH 250W HPS LUMINAIRE, 45 FEET MOUNTING HEIGHT,
  - TYPE III BARRICADES
  - ARROW BOARD



FILE NAME = S:\Projects\403-00072.57-70\dgn\W Tr\lv\m01_s2.dgn	USER NAME = #USER#	DESIGNED - JWS	REVISED -	<b>STATE OF ILLINOIS DEPARTMENT OF TRANSPORTATION</b>	<b>MAINTENANCE OF TRAFFIC, STAGE 2, RAMP A AND B, US 45</b>		F.A.I. RTE. 57/70	SECTION (25-4R)	COUNTY EFFINGHAM	TOTAL SHEETS 1760	SHEET NO. 233	
PLOT SCALE = #SCALE#	CHECKED - BRM	REVISED -	REVISED -		SCALE: 1"=50'	SHEET NO. 18 OF 20 SHEETS	STA. 10+00.00 TO STA. 28+16.86	CONTRACT NO. 74295		FED. ROAD DIST. NO.	ILLINOIS FED. AID PROJECT	
PLOT DATE = #DATE#	DATE - 3-31-08	REVISED -	REVISED -									