

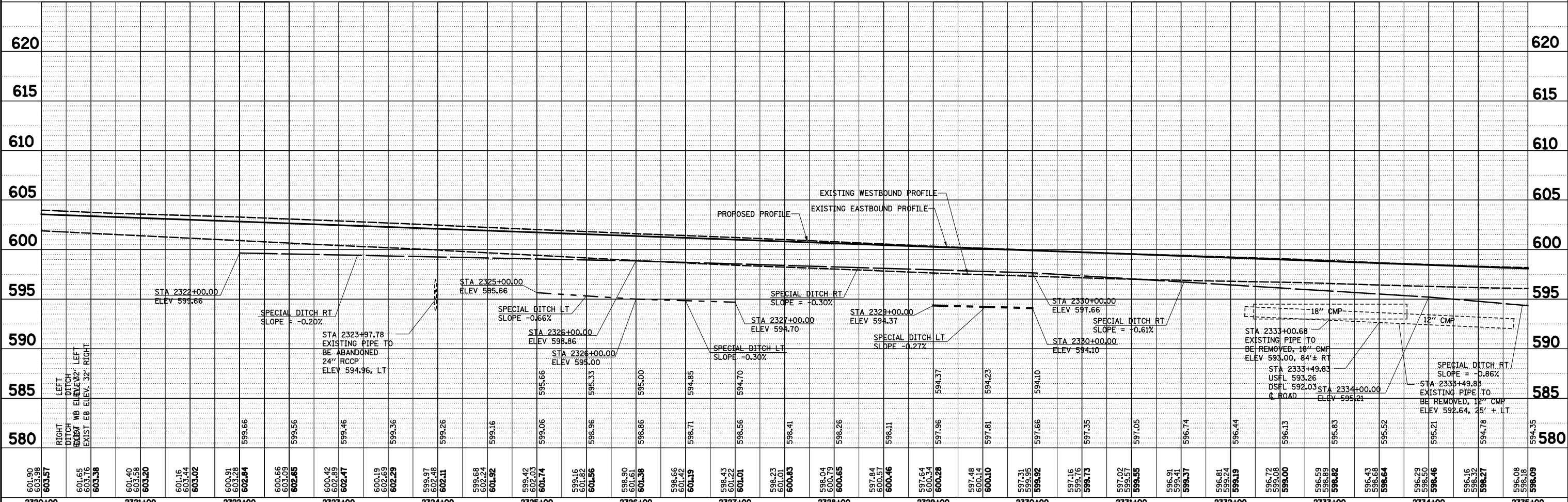
PLAN	SURVEYED	DATE
	PLOTTED	BY
	ALIGNED	
	CHECKED	
	FILED	
	NO.	

PROFILE	SURVEYED	DATE
	PLOTTED	BY
	GRADES	
	CHECKED	
	STRUCTURE	
	NOTATIONS	
	CPAD	
	NO.	

NOTE: FOR STORM SEWER PROFILE INFORMATION SEE STORM SEWER PROFILE SHEETS

NOTE: STATIONING ON ROADWAY C IS REVERSED

NOTE: FOR CLARITY THE MEDIAN CONCRETE BARRIER HAS NOT BEEN PRESENTED ON THE DRAINAGE SHEETS.



FILE NAME =	USER NAME = *USER*	DESIGNED - JWS	REVISED -
S:\Projects\403-00072-57-70\dm\N Tr\lv\dm PP.NTr\15177.dgn		DRAWN - PDB	REVISED -
		CHECKED - BRM	REVISED -
		DATE - 3-25-08	REVISED -

STATE OF ILLINOIS  
DEPARTMENT OF TRANSPORTATION

DRAINAGE PLAN AND PROFILE, FAI ROUTE 57/70

SCALE: 1"=50' SHEET NO. 5 OF 11 SHEETS STA. 2320+00.00 TO STA. 2335+00.00

F.A.I. RTE.	SECTION	COUNTY	TOTAL SHEETS	SHEET NO.
57/0	(25-4R)	EFFINGHAM	1760	266
CONTRACT NO. 74295			ILLINOIS FED. AID PROJECT	