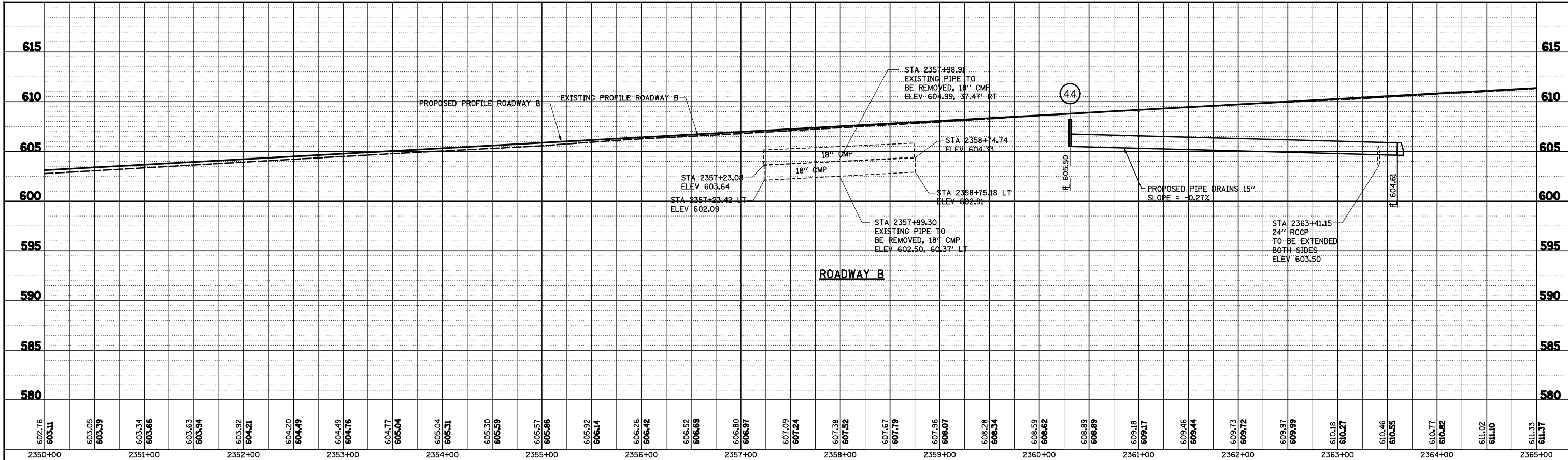
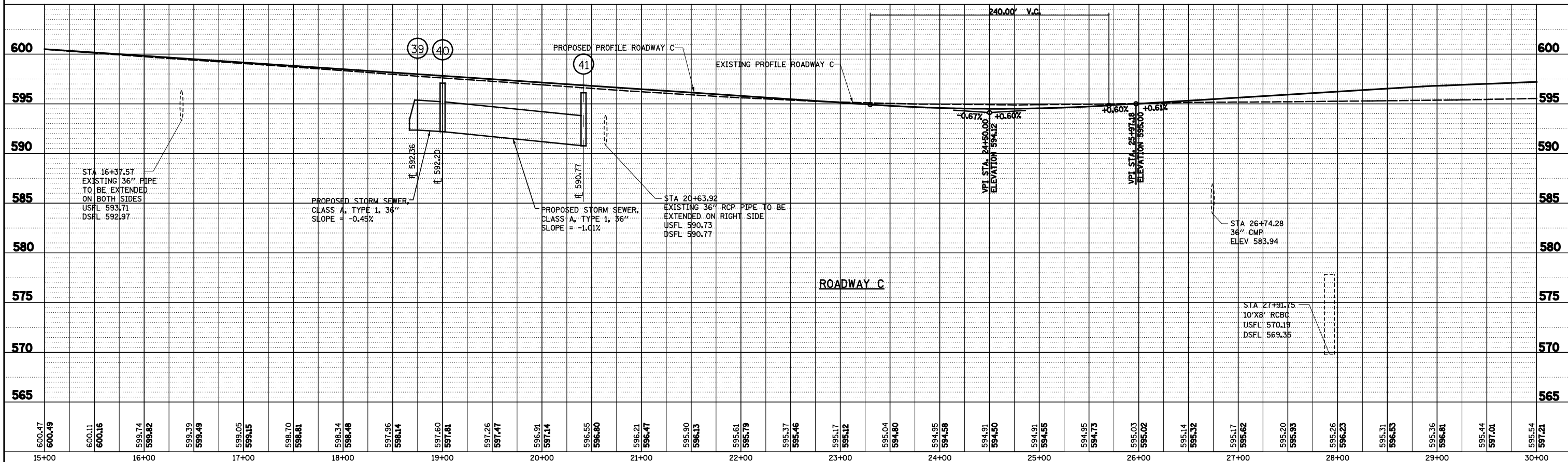


PLAN	SURVEYED	DATE
	PLOTTED	
	GRADES CHECKED	
	ALIGNMENT CHECKED	
	STRUCTURE NOTATIONS CHECKED	
	NOTE BOOK NO.	
	CARD FILE NAME	



PROFILE	SURVEYED	DATE
	PLOTTED	
	GRADES CHECKED	
	ALIGNMENT CHECKED	
	STRUCTURE NOTATIONS CHECKED	
	NOTE BOOK NO.	
	CARD FILE NAME	



FILE NAME =	USER NAME = *USER*	DESIGNED - JWS	REVISED -	STATE OF ILLINOIS DEPARTMENT OF TRANSPORTATION	STORM SEWER PROFILE, NORTH TRI-LEVEL ROADWAYS B AND C	F.A.I. RTE.	SECTION	COUNTY	TOTAL SHEETS	SHEET NO.
5:\Projects\483\0002\57-70\Drawn\Trk\ISS\profile.5778.dgn		DRAWN - PDB	REVISED -			57/70	(25-4R)	EFFINGHAM	1760	276
		CHECKED - BRM	REVISED -			CONTRACT NO. 74295				
		DATE - 3-25-08	REVISED -			SCALE: 1"=50'	SHEET NO. 4 OF 5 SHEETS	STA.	TO STA.	FED. ROAD DIST. NO.