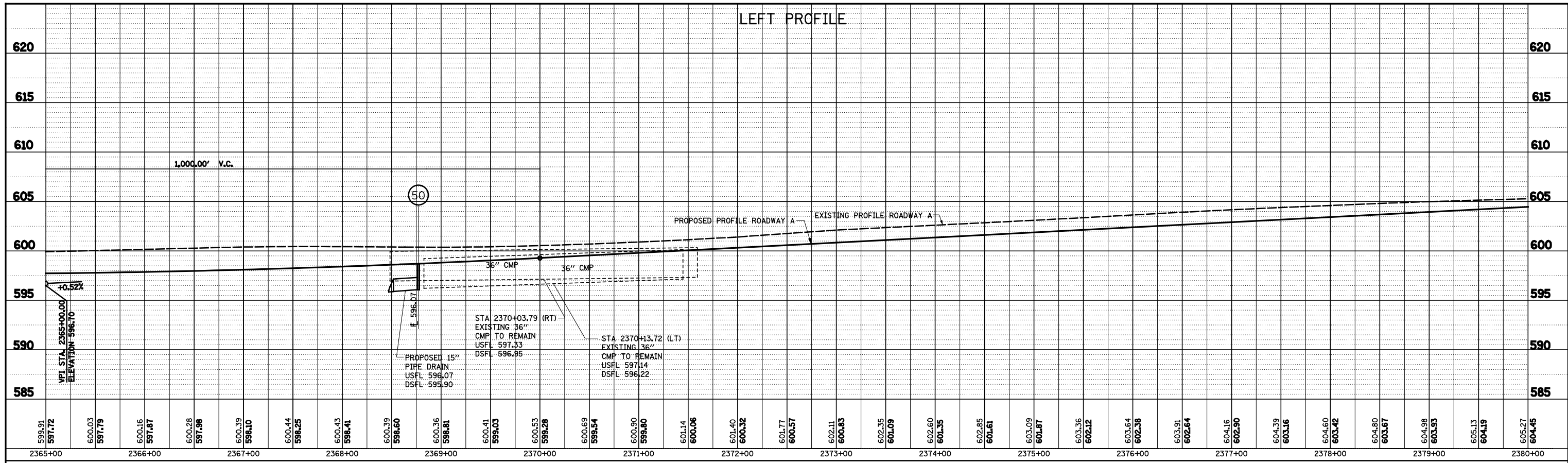
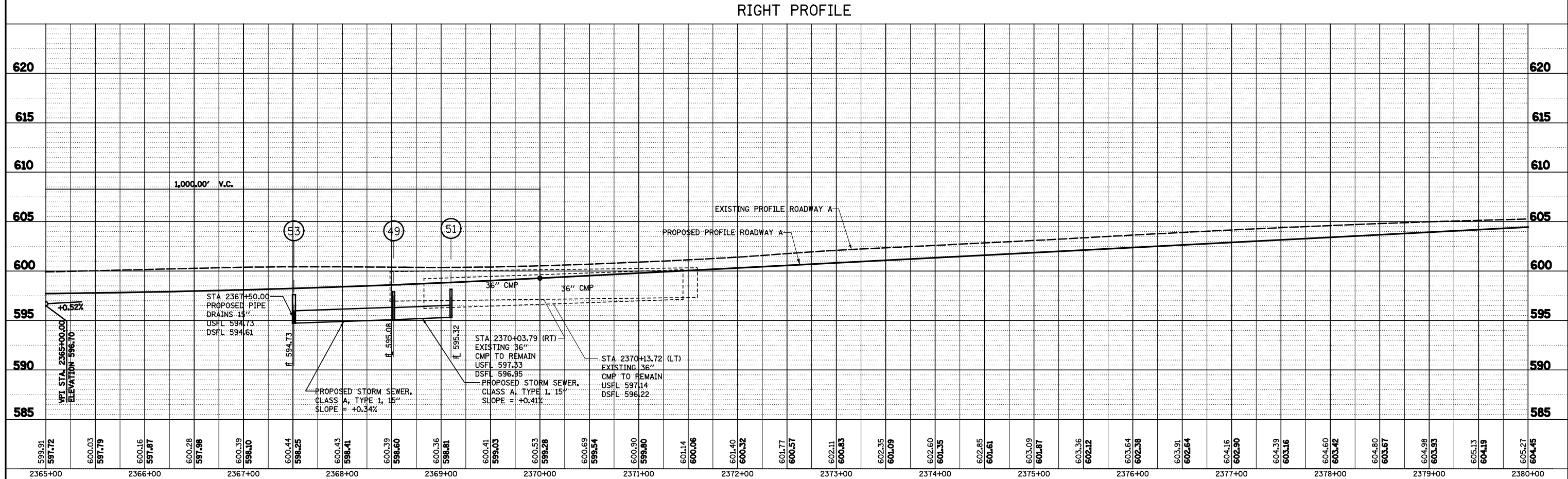


PLAN	SURVEYED	BY	DATE
	PLOTTED		
	GRADES CHECKED		
	ALIGNMENT CHECKED		
	STRUCTURE NOTATIONS CHECKED		
	NOTE BOOK NO.		
	CARD FILE NAME		



PROFILE	SURVEYED	BY	DATE
	PLOTTED		
	GRADES CHECKED		
	ALIGNMENT CHECKED		
	STRUCTURE NOTATIONS CHECKED		
	NOTE BOOK NO.		
	CARD FILE NAME		



FILE NAME =	USER NAME = *USER*	DESIGNED - JWS	REVISED -	<b>STATE OF ILLINOIS</b> <b>DEPARTMENT OF TRANSPORTATION</b>	<b>STORM SEWER PROFILE, NORTH TRI-LEVEL ROADWAY A</b>		F.A.I. RTE.	SECTION	COUNTY	TOTAL SHEETS	SHEET NO.
S:\Projects\483\0007257-70\Drawn\Trk\ISS\profile.5778.dgn		DRAWN - PDB	REVISED -		57/70	(25-4R)	EFFINGHAM	1760	277	CONTRACT NO. 74295	
		CHECKED - BRM	REVISED -		SCALE: 1"=50'	SHEET NO. 5 OF 5 SHEETS	STA. 2365+00.00 TO STA. 2380+00.00	FED. ROAD DIST. NO.	ILLINOIS FED. AID PROJECT		
		DATE - 3-25-08	REVISED -								