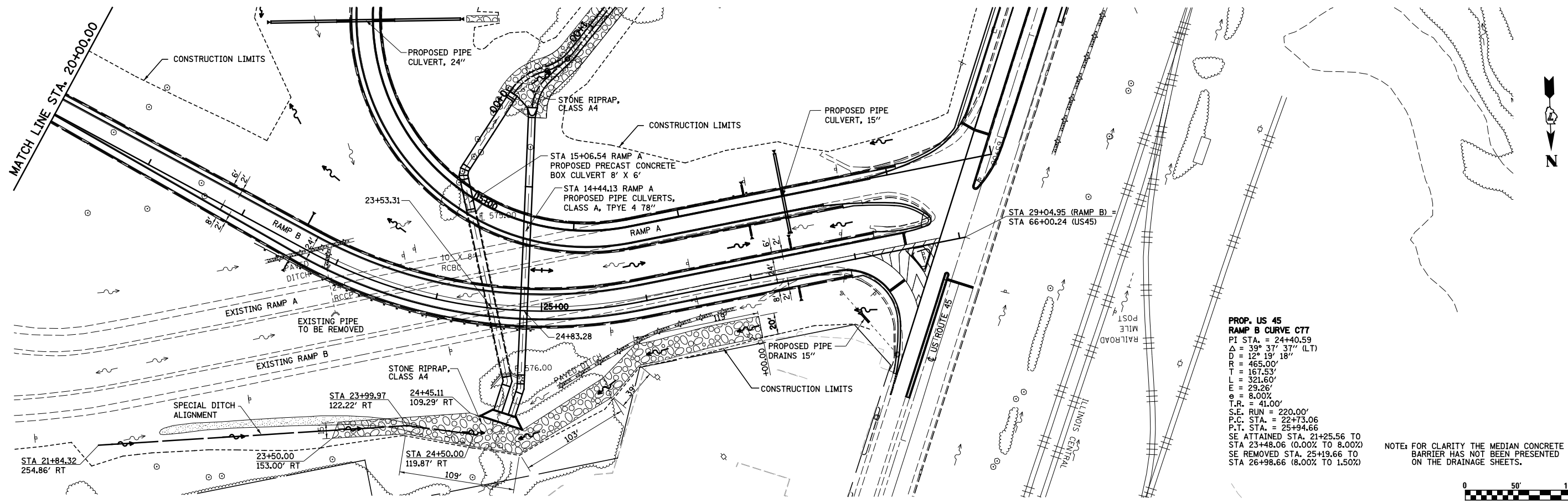


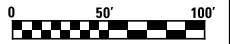
PLAN	SURVEYED	BY	DATE
	PLOTTED		
	GRADES CHECKED		
	ALIGNMENT CHECKED		
	STRUCTURE CHECKED		
	NOTE BOOK NO.		
	FILE NAME		

PROFILE	SURVEYED	BY	DATE
	PLOTTED		
	GRADES CHECKED		
	ALIGNMENT CHECKED		
	STRUCTURE CHECKED		
	NOTE BOOK NO.		
	FILE NAME		

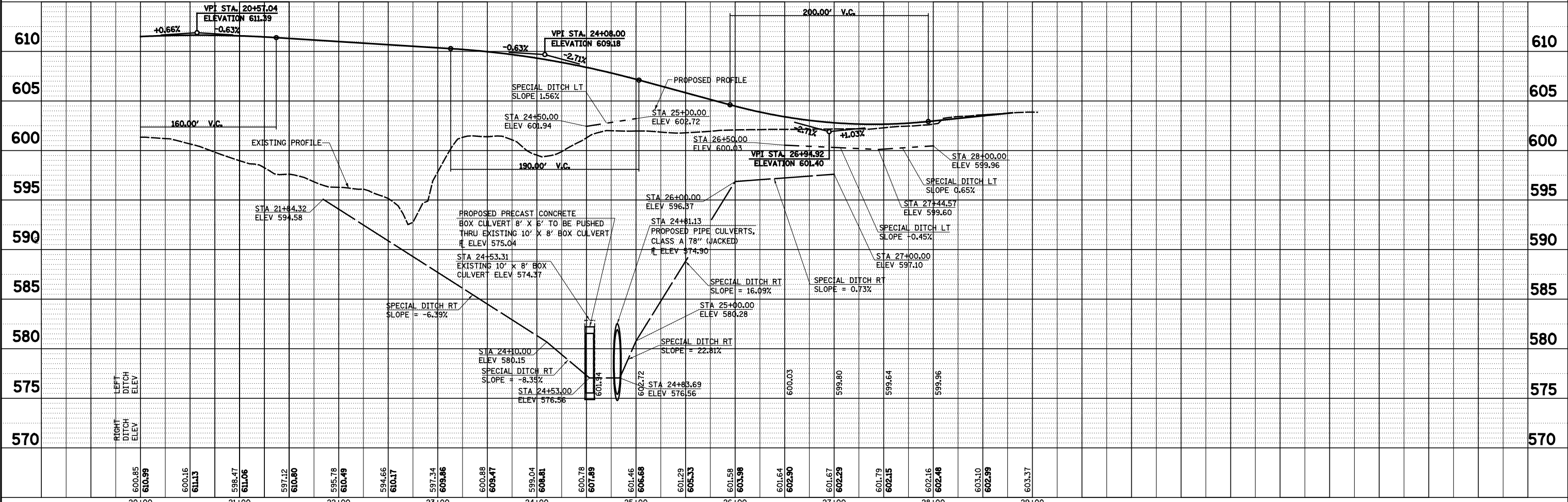


**PROP. US 45  
RAMP B CURVE C77**  
 PI STA. = 24+40.59  
 $\Delta = 39^\circ 37' 37''$  (LT)  
 $D = 12^\circ 19' 18''$   
 $R = 465.00'$   
 $T = 167.53'$   
 $L = 321.60'$   
 $E = 26.26'$   
 $e = 8.00\%$   
 $T.R. = 41.00'$   
 $S.E. RUN = 220.00'$   
 $P.C. STA. = 22+73.06$   
 $P.T. STA. = 25+94.66$   
 SE ATTAINED STA. 21+25.56 TO  
 STA 23+48.06 (0.00% TO 8.00%)  
 SE REMOVED STA. 25+19.66 TO  
 STA 26+98.66 (8.00% TO 1.50%)

NOTE: FOR CLARITY THE MEDIAN CONCRETE BARRIER HAS NOT BEEN PRESENTED ON THE DRAINAGE SHEETS.



NOTE: STATIONING OF RAMP A IS REVERSED



FILE NAME	USER NAME = *USER*	DESIGNED - JWS	REVISED -	<b>STATE OF ILLINOIS DEPARTMENT OF TRANSPORTATION</b> DRAINAGE PLAN AND PROFILE, US ROUTE 45 - RAMP B SCALE: 1"=50' SHEET NO. 7 OF 11 SHEETS STA. 20+00.00 TO STA. 29+04.95	F.A.I. RTE.	SECTION	COUNTY	TOTAL SHEETS	SHEET NO.
S:\Projects\403-00072-57-70\dgn\N Tr\lv\dnn PP.Ntr\15177.dgn		DRAWN - PDB	REVISED -		57/70	(25-4R)	EFFINGHAM	1760	284
PLOT SCALE = *SCALE*		CHECKED - BRM	REVISED -		CONTRACT NO. 74295				
PLOT DATE = *DATE*		DATE - 3-25-08	REVISED -		FED. ROAD DIST. NO. ILLINOIS FED. AID PROJECT				