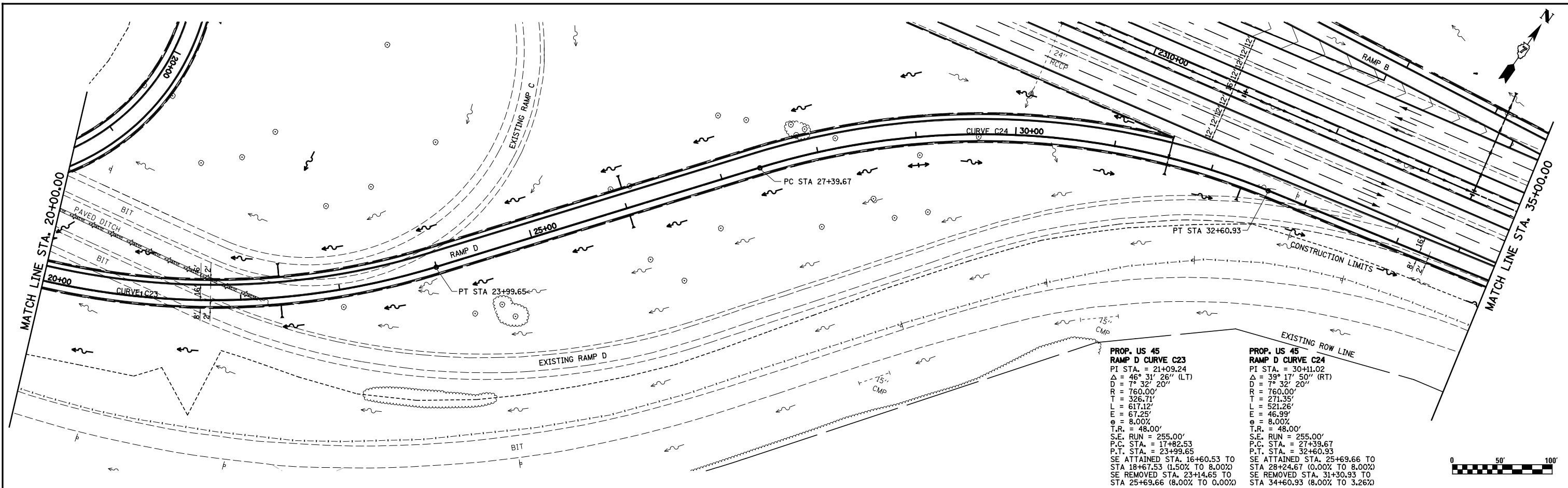


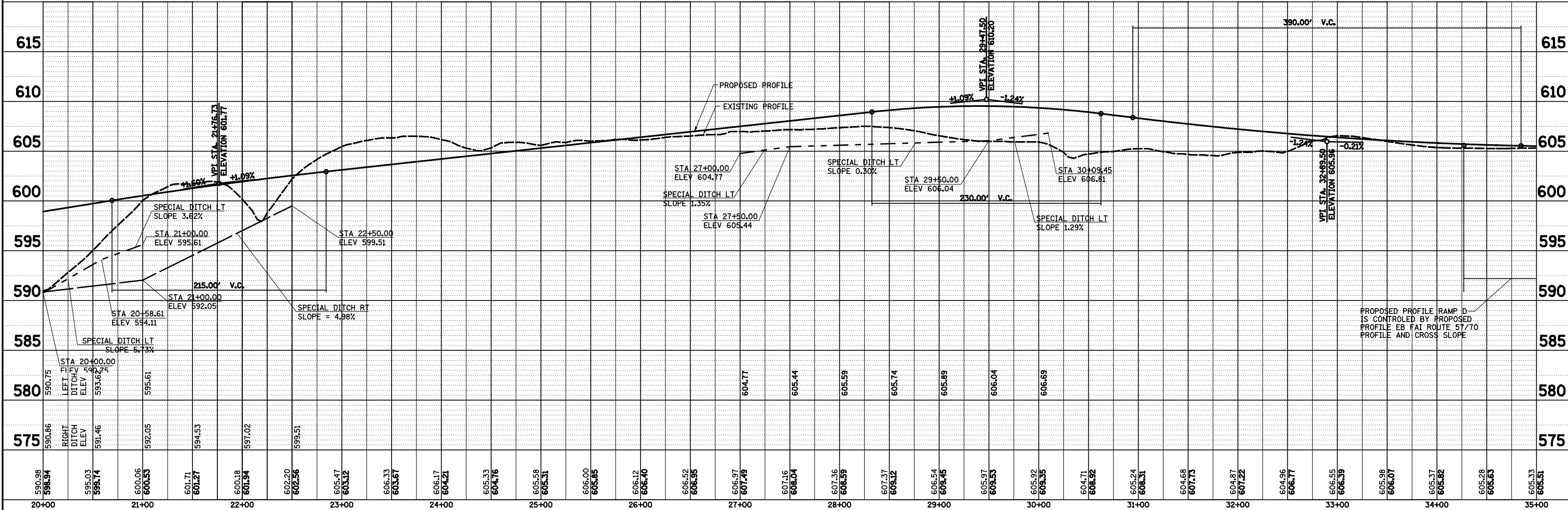
PLAN	SURVEYED	BY	DATE
	PLOTTED		
	ALIGNED		
	CHECKED		
	FILED		
	NO.		

PROFILE	SURVEYED	BY	DATE
	PLOTTED		
	GRADES		
	CHECKED		
	STRUCTURE		
	NOTATIONS		
	CHFD		
	NO.		



PROP. US 45 RAMP D CURVE C23
 PI STA. = 21+09.24
 $\Delta = 46^\circ 31' 26''$ (LT)
 $D = 7^\circ 32' 20''$ (LT)
 $R = 760.00'$
 $L = 326.71'$
 $E = 617.12'$
 $\theta = 8.00\%$
 $T.R. = 48.00'$
 $S.E. RUN = 255.00'$
 $P.C. STA. = 17+82.53$
 $P.T. STA. = 23+99.65$
 SE ATTAINED STA. 16+60.53 TO STA 18+67.53 (1.50% TO 8.00%)
 SE REMOVED STA. 23+14.65 TO STA 25+69.66 (8.00% TO 0.00%)

PROP. US 45 RAMP D CURVE C24
 PI STA. = 30+11.02
 $\Delta = 39^\circ 17' 50''$ (RT)
 $D = 7^\circ 32' 20''$
 $R = 760.00'$
 $L = 271.35'$
 $E = 521.26'$
 $\theta = 46.99'$
 $\theta = 8.00\%$
 $T.R. = 48.00'$
 $S.E. RUN = 255.00'$
 $P.C. STA. = 27+39.67$
 $P.T. STA. = 32+60.93$
 SE ATTAINED STA. 25+69.66 TO STA 28+24.67 (0.00% TO 8.00%)
 SE REMOVED STA. 31+30.93 TO STA 34+60.93 (8.00% TO 3.26%)



590.98	596.94	595.03	595.74	600.06	600.53	601.71	601.27	600.18	601.94	602.20	602.56	605.47	603.12	606.33	603.67	606.17	604.21	605.33	604.76	605.58	605.31	606.00	605.85	606.12	606.40	606.52	606.95	606.97	607.49	607.16	608.04	607.36	608.59	607.37	608.12	606.54	605.45	605.97	605.53	605.92	605.35	604.71	605.92	605.24	608.31	604.68	607.73	604.87	607.22	604.96	606.77	605.55	606.39	605.98	606.07	605.37	605.82	605.28	605.63	605.33	605.51
20+00				21+00				22+00				23+00				24+00				25+00				26+00				27+00				28+00				29+00				30+00				31+00				32+00				33+00				34+00				35+00	

FILE NAME =
 S:\Projects\403-00072-57-70\dgn\N Tr\lv\dm PP.NTr\5177.dgn

USER NAME = *USER*
 PLOT SCALE = *SCALE*
 PLOT DATE = *DATE*

DESIGNED - JWS
 DRAWN - PDB
 CHECKED - BRM
 DATE - 3-25-08

REVISED -
 REVISED -
 REVISED -
 REVISED -

**STATE OF ILLINOIS
 DEPARTMENT OF TRANSPORTATION**

DRAINAGE PLAN AND PROFILE, US ROUTE 45 - RAMP D
 SCALE: 1"=50'
 SHEET NO. 11 OF 11 SHEETS
 STA. 20+00.00 TO STA. 35+00.00

F.A.I. RTE. 57/70
 SECTION (25-4R)
 COUNTY EFFINGHAM
 TOTAL SHEETS 1760
 SHEET NO. 288
 CONTRACT NO. 74295
 FED. ROAD DIST. NO. ILLINOIS FED. AID PROJECT