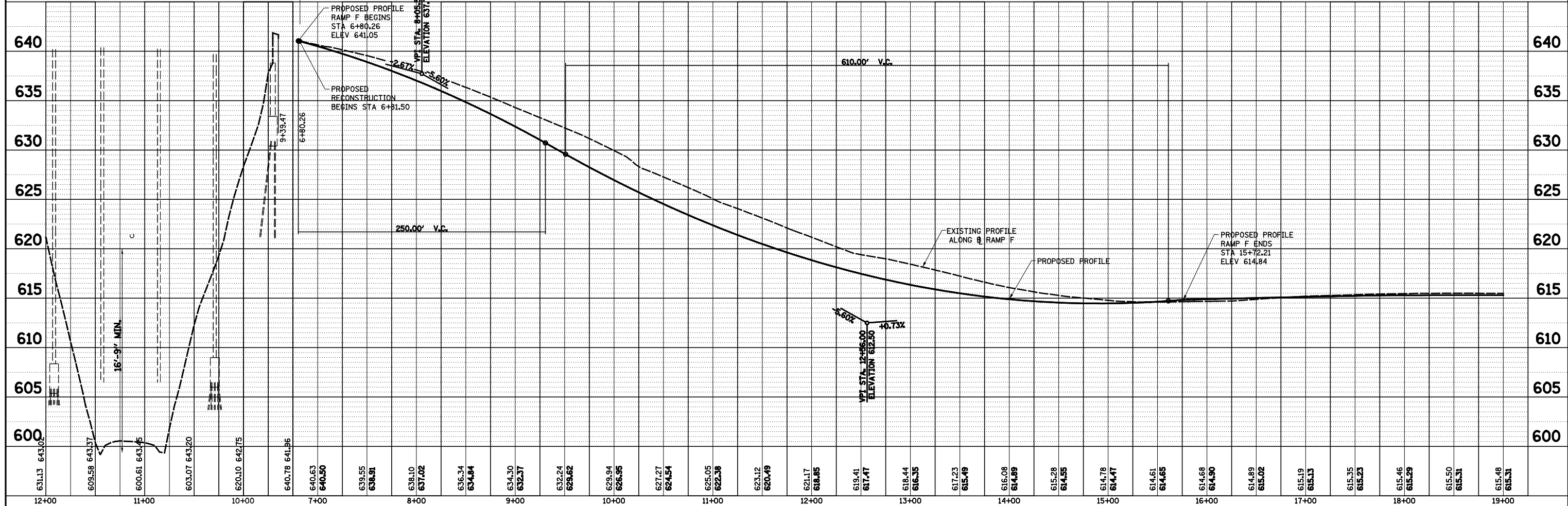
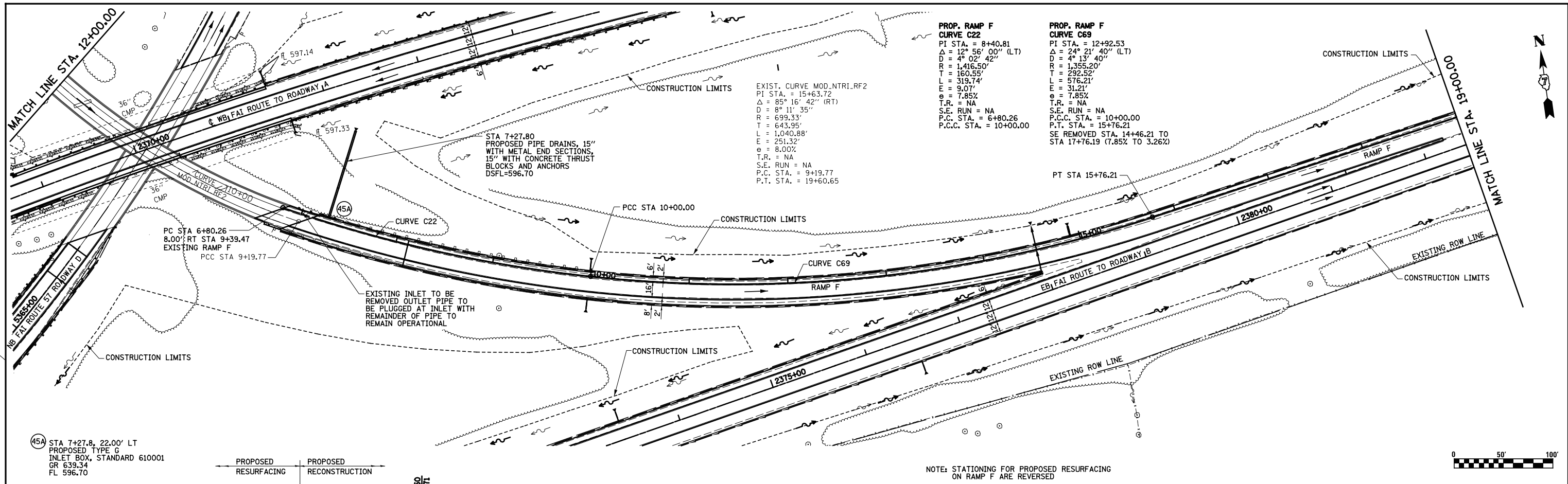


PLAN	SURVEYED	DATE
	PLOTTED	BY
	NOTE BOOK	
	NO.	
	CHECKED	
	FILE NAME	

PROFILE	SURVEYED	DATE
	PLOTTED	BY
	GRADES CHECKED	
	STRUCTURE NOTATIONS CHECKED	
	NO.	



FILE NAME =	USER NAME = *USER*	DESIGNED - JWS	REVISED -	<b>STATE OF ILLINOIS</b> <b>DEPARTMENT OF TRANSPORTATION</b> <b>DRAINAGE PLAN AND PROFILE, NORTH TRI LEVEL RAMP F</b> SCALE: 1"=50' SHEET NO. 8 OF 10 SHEETS STA. 6+80.26 TO STA. 19+00.00	F.A.I. RTE. 57/70	SECTION (25-4R)	COUNTY EFFINGHAM	TOTAL SHEETS 1760	SHEET NO. 296
	PLOT SCALE = *SCALE*	CHECKED - BRM	REVISED -		FED. ROAD DIST. NO.	ILLINOIS FED. AID PROJECT	CONTRACT NO. 74295		
	PLOT DATE = *DATE*	DATE - 3-25-08	REVISED -						