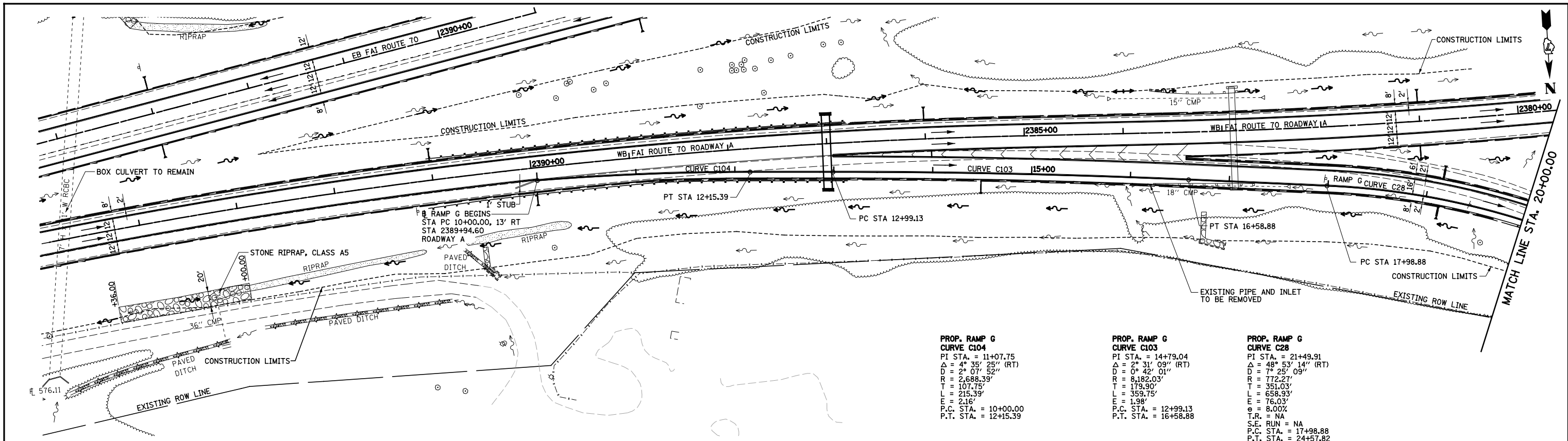


PLAN	SURVEYED	DATE
	PLOTTED	BY
	GRADES CHECKED	
	STRUCTURE NOTATIONS CHECKED	
	NOTE BOOK NO.	
	FILE NAME	

PROFILE	SURVEYED	DATE
	PLOTTED	BY
	GRADES CHECKED	
	STRUCTURE NOTATIONS CHECKED	
	NOTE BOOK NO.	
	FILE NAME	

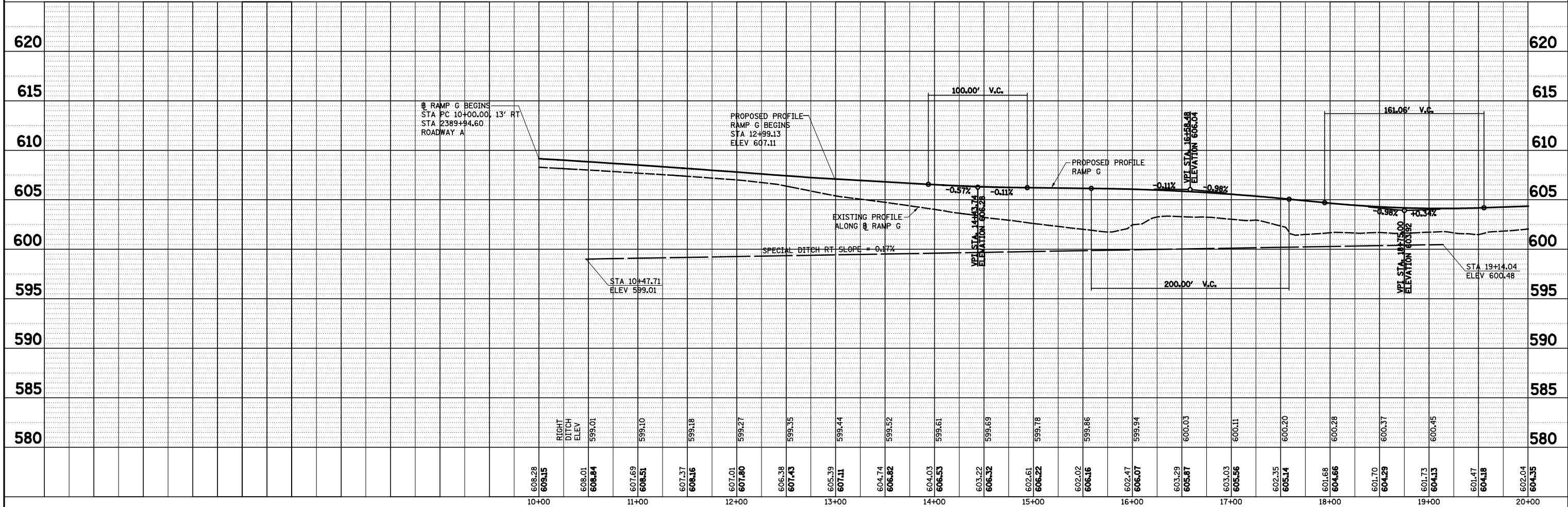


PROP. RAMP G CURVE C104
 PI STA. = 11+07.75
 $\Delta = 4^\circ 35' 25''$ (RT)
 $D = 2^\circ 07' 52''$
 $R = 2,688.39'$
 $T = 107.75'$
 $L = 215.39'$
 $e = 2.16'$
 P.C. STA. = 10+00.00
 P.T. STA. = 12+15.39

PROP. RAMP G CURVE C103
 PI STA. = 14+79.04
 $\Delta = 2^\circ 31' 09''$ (RT)
 $D = 0^\circ 42' 01''$
 $R = 8,182.03'$
 $T = 179.90'$
 $L = 359.75'$
 $e = 1.98'$
 P.C. STA. = 12+99.13
 P.T. STA. = 16+58.88

PROP. RAMP G CURVE C28
 PI STA. = 21+49.91
 $\Delta = 48^\circ 53' 14''$ (RT)
 $D = 7^\circ 25' 09''$
 $R = 772.27'$
 $T = 351.03'$
 $L = 658.93'$
 $e = 76.03'$
 $e = 8.00\%$
 T.R. = NA
 S.E. RUN = NA
 P.C. STA. = 17+98.88
 P.T. STA. = 24+57.82
 SE ATTAINED STA. 16+58.48 TO STA 18+68.88 (3.34% TO 8.00%)

NOTE: STATIONING OF ROADWAY A AND B IS REVERSED



FILE NAME =	USER NAME = *USER*	DESIGNED - JWS	REVISED -	STATE OF ILLINOIS DEPARTMENT OF TRANSPORTATION	DRAINAGE PLAN AND PROFILE, NORTH TRI LEVEL RAMP G	F.A.I. RTE.	SECTION	COUNTY	TOTAL SHEETS	SHEET NO.	
S:\Projects\403-00072-57-70\dgn\N TriLvl.dgn		DRAWN - PDB	REVISED -			57/70	(25-4R)	EFFINGHAM	1760	297	
PLOT SCALE = *SCALE*		CHECKED - BRM	REVISED -			CONTRACT NO. 74295					
PLOT DATE = *DATE*		DATE - 3-25-08	REVISED -			SCALE: 1"=50'	SHEET NO. 9 OF 10 SHEETS	STA. 10+00.00 TO STA. 20+00.00	FED. ROAD DIST. NO.	ILLINOIS FED. AID PROJECT	