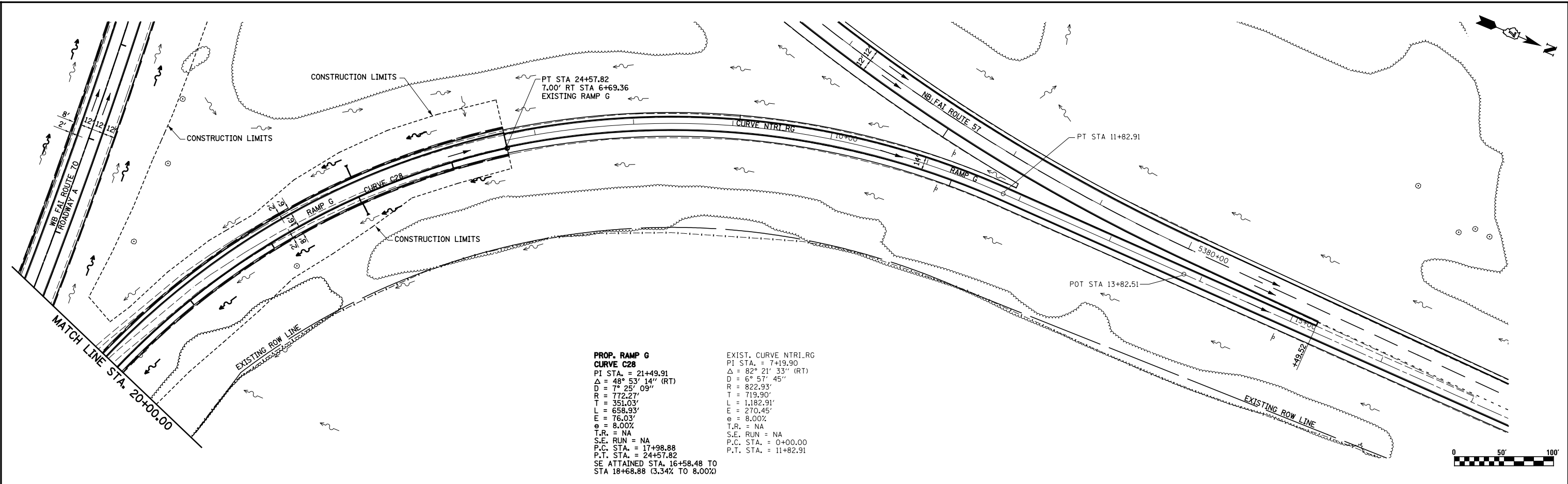


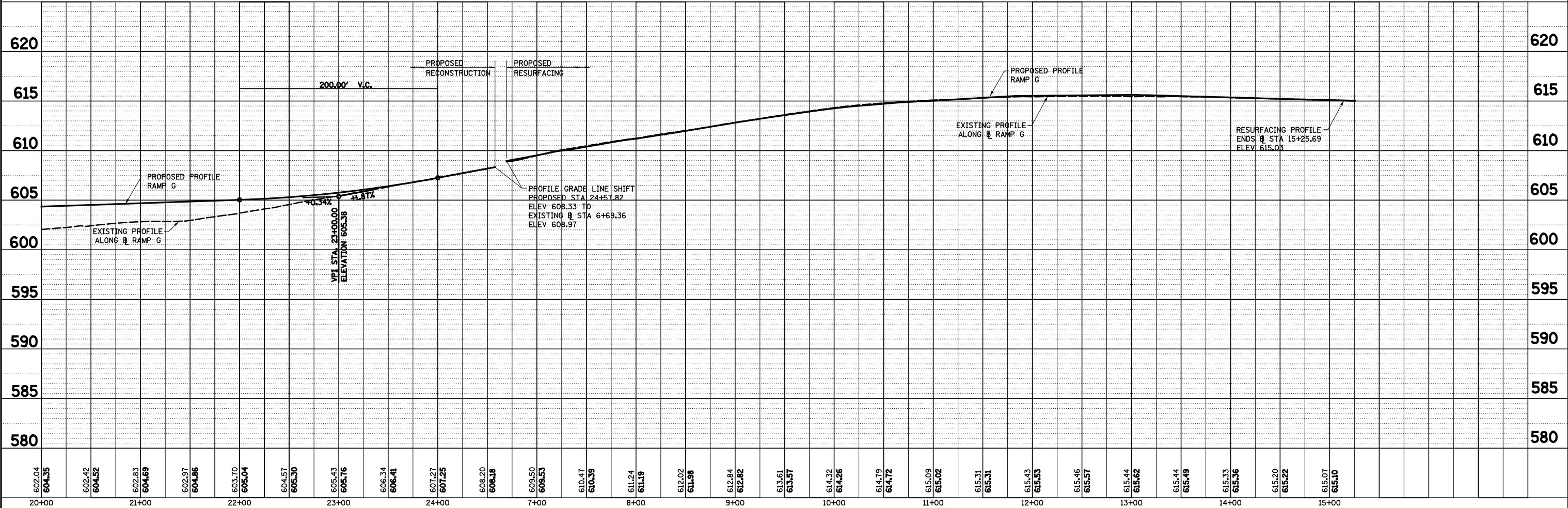
PLAN	SURVEYED	BY	DATE
	ALIGNED		
	PLOTTED		
	CHECKED		
	FILED		
	NO.		

PROFILE	SURVEYED	BY	DATE
	GRADES		
	CHECKED		
	PLOTTED		
	STRUCTURE		
	NOTATIONS		
	NO.		



**PROP. RAMP G
CURVE C28**
 PI STA. = 21+49.91
 $\Delta = 48^\circ 53' 14''$ (RT)
 $D = 7^\circ 25' 09''$
 $R = 772.27'$
 $T = 351.03'$
 $L = 658.93'$
 $E = 76.03'$
 $e = 8.00\%$
 $T.R. = NA$
 $S.E. RUN = NA$
 $P.C. STA. = 17+98.88$
 $P.T. STA. = 24+57.82$
 SE ATTAINED STA. 16+58.48 TO
 STA 18+68.88 (3.34% TO 8.00%)

EXIST. CURVE NTRI.RG
 PI STA. = 7+19.90
 $\Delta = 82^\circ 21' 33''$ (RT)
 $D = 6^\circ 57' 45''$
 $R = 822.93'$
 $T = 719.90'$
 $L = 1,182.91'$
 $E = 270.45'$
 $e = 8.00\%$
 $T.R. = NA$
 $S.E. RUN = NA$
 $P.C. STA. = 0+00.00$
 $P.T. STA. = 11+82.91$



FILE NAME =	USER NAME = *USER*	DESIGNED - JWS	REVISED -	STATE OF ILLINOIS DEPARTMENT OF TRANSPORTATION	DRAINAGE PLAN AND PROFILE, NORTH TRI LEVEL RAMP G	F&I RTE.	SECTION	COUNTY	TOTAL SHEETS	SHEET NO.
S:\Projects\403-00072-57-70\dm\N TriLvl.dgn		DRAWN - PDB	REVISED -			57/70	(25-4)R	EFFINGHAM	1760	298
PLOT SCALE = *SCALE*		CHECKED - BRM	REVISED -			CONTRACT NO. 74295				
PLOT DATE = *DATE*		DATE - 3-25-08	REVISED -			FED. ROAD DIST. NO. ILLINOIS FED. AID PROJECT				