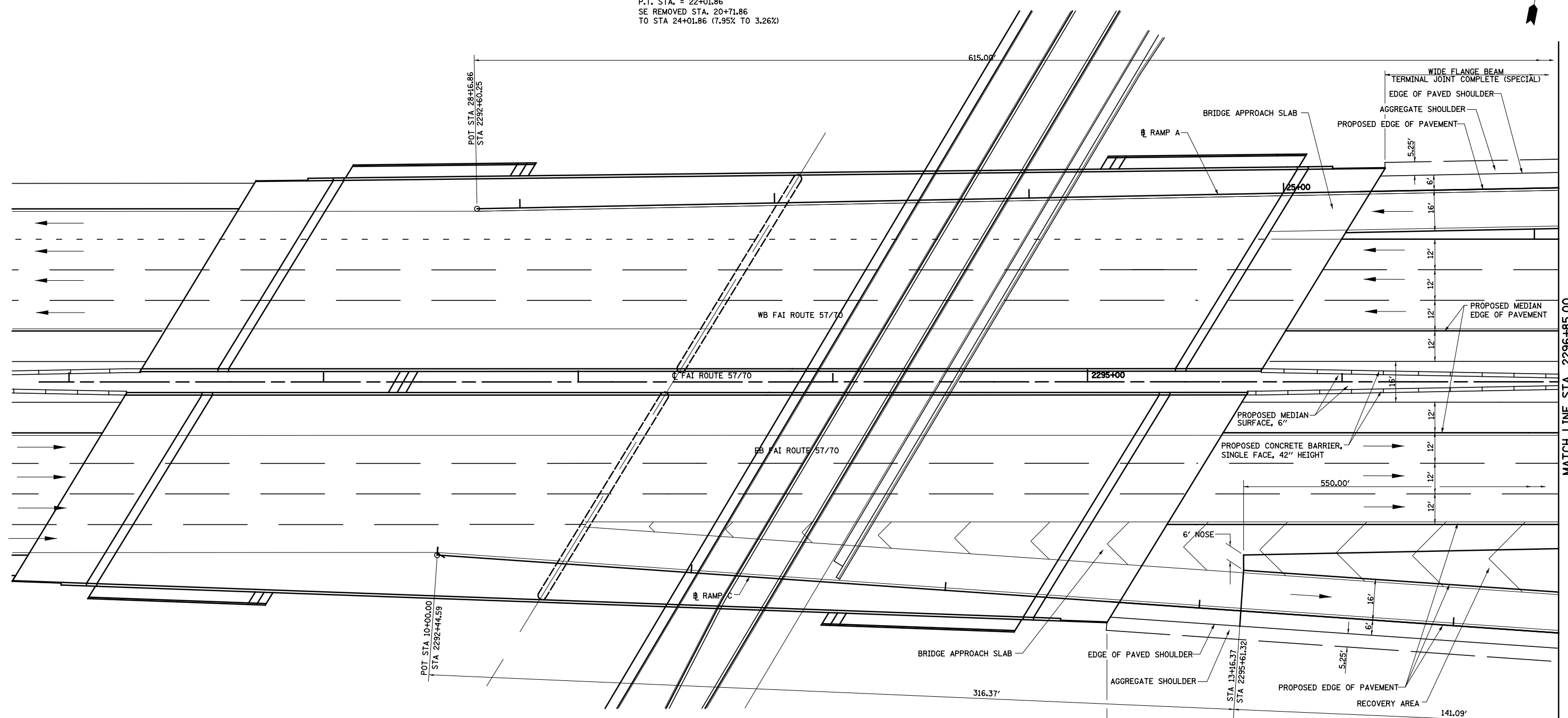
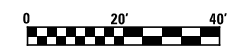


**PROP. US 45**  
**RAMP A CURVE C49**  
 PI STA. = 21+01.69  
 $\Delta = 15^\circ 11' 36''$  (RT)  
 $D = 7^\circ 32' 20''$   
 $R = 760.00'$   
 $T = 101.36'$   
 $L = 201.53'$   
 $E = 6.73'$   
 P.C.C. STA. = 20+00.33  
 P.T. STA. = 22+01.86  
 SE REMOVED STA. 20+71.86  
 TO STA 24+01.86 (7.95% TO 3.26%)



**PROP. US 45**  
**RAMP C CURVE C-70**  
 PI STA. = 15+58.22  
 $\Delta = 15^\circ 06' 14''$  (RT)  
 $D = 7^\circ 32' 20''$   
 $R = 760.00'$   
 $T = 100.76'$   
 $L = 200.35'$   
 $E = 6.65'$   
 $e = 8.00\%$   
 $T.R. = NA$   
 $S.E. RUN = NA$   
 P.C. STA. = 14+57.46  
 P.C.C. STA. = 16+57.81  
 SE ATTAINED STA. 13+16+37 TO  
 STA 15+27.46 (2.00% TO 8.00%)

MATCH LINE STA. 2296+85.00



FILE NAME =	USER NAME = #USER#	DESIGNED - JWS	REVISED -	<b>STATE OF ILLINOIS DEPARTMENT OF TRANSPORTATION</b>	<b>INTERCHANGE RAMP TERMINAL DETAIL, RAMP A AND C, US ROUTE 45</b>	F.A.I. RTE.	SECTION	COUNTY	TOTAL SHEETS	SHEET NO.
S:\Projects\403-00072-57-70\dgn\W Tr\l\vrampdetails.dgn		DRAWN - PDB	REVISED -			57/70	(25-4)R	EFFINGHAM	1760	309
PLOT SCALE = #SCALE#		CHECKED - BRM	REVISED -			<b>CONTRACT NO. 74295</b>				
PLOT DATE = #DATE#		DATE - 7-31-08	REVISED -			FED. ROAD DIST. NO. ILLINOIS FED. AID PROJECT				
					SCALE: 1"=20'	SHEET NO. 1 OF 5 SHEETS	STA. 2290+78.00 TO STA. 2296+75.00			