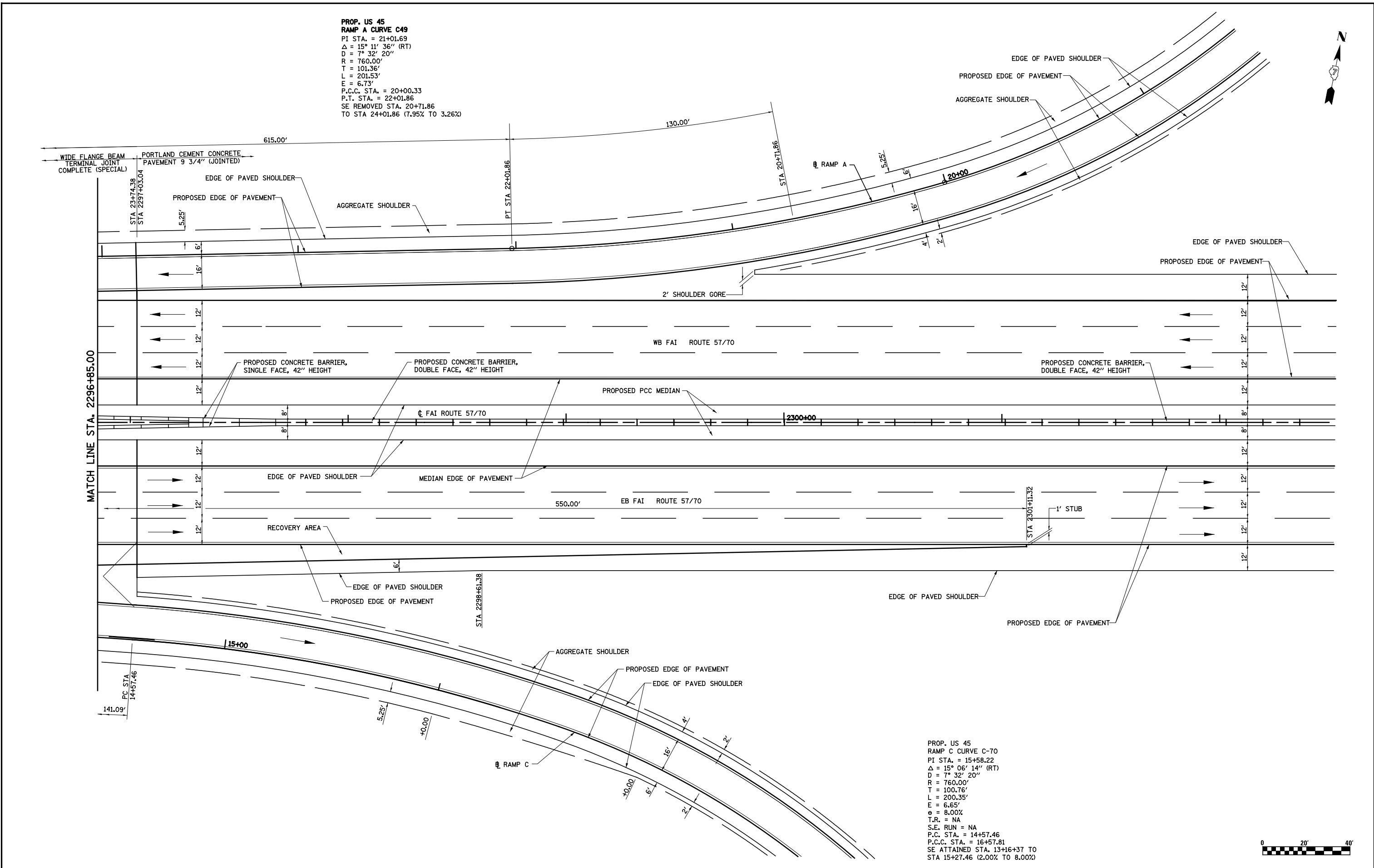


PROP. US 45  
 RAMP A CURVE C-49  
 PI STA. = 21+01.69  
 $\Delta = 15^\circ 11' 36''$  (RT)  
 $D = 7^\circ 32' 20''$   
 $R = 760.00'$   
 $T = 101.36'$   
 $L = 201.53'$   
 $E = 6.73'$   
 P.C.C. STA. = 20+00.33  
 P.T. STA. = 22+01.86  
 SE REMOVED STA. 20+71.86  
 TO STA 24+01.86 (7.95% TO 3.26%)

PROP. US 45  
 RAMP C CURVE C-70  
 PI STA. = 15+58.22  
 $\Delta = 15^\circ 06' 14''$  (RT)  
 $D = 7^\circ 32' 20''$   
 $R = 760.00'$   
 $T = 100.76'$   
 $L = 200.35'$   
 $E = 6.65'$   
 $e = 8.00\%$   
 T.R. = NA  
 S.E. RUN = NA  
 P.C. STA. = 14+57.46  
 P.C.C. STA. = 16+57.81  
 SE ATTAINED STA. 13+16+37 TO  
 STA 15+27.46 (2.00% TO 8.00%)



FILE NAME =	USER NAME = \$USER\$	DESIGNED - JWS	REVISED -
		DRAWN - PDB	REVISED -
		CHECKED - BRM	REVISED -
		DATE - 7-31-08	REVISED -

**STATE OF ILLINOIS  
 DEPARTMENT OF TRANSPORTATION**

**INTERCHANGE RAMP TERMINAL DETAIL,  
 RAMP A AND C, US ROUTE 45**

SCALE: 1"=20'      SHEET NO. 2 OF 5 SHEETS      STA. 2296+75.00 TO STA. 2302+40.00

F.A.I. RTE.	SECTION	COUNTY	TOTAL SHEETS	SHEET NO.
57/70	(25-4)R	EFFINGHAM	1760	310
CONTRACT NO. 74295				
FED. ROAD DIST. NO.    ILLINOIS FED. AID PROJECT				