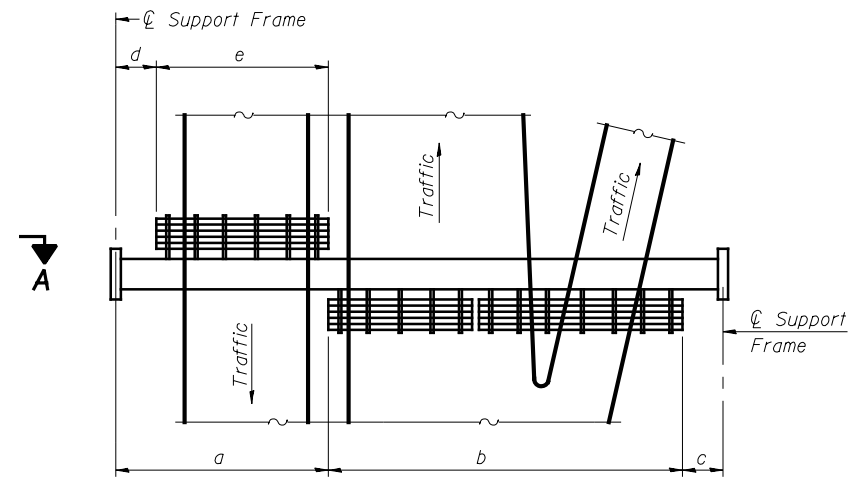


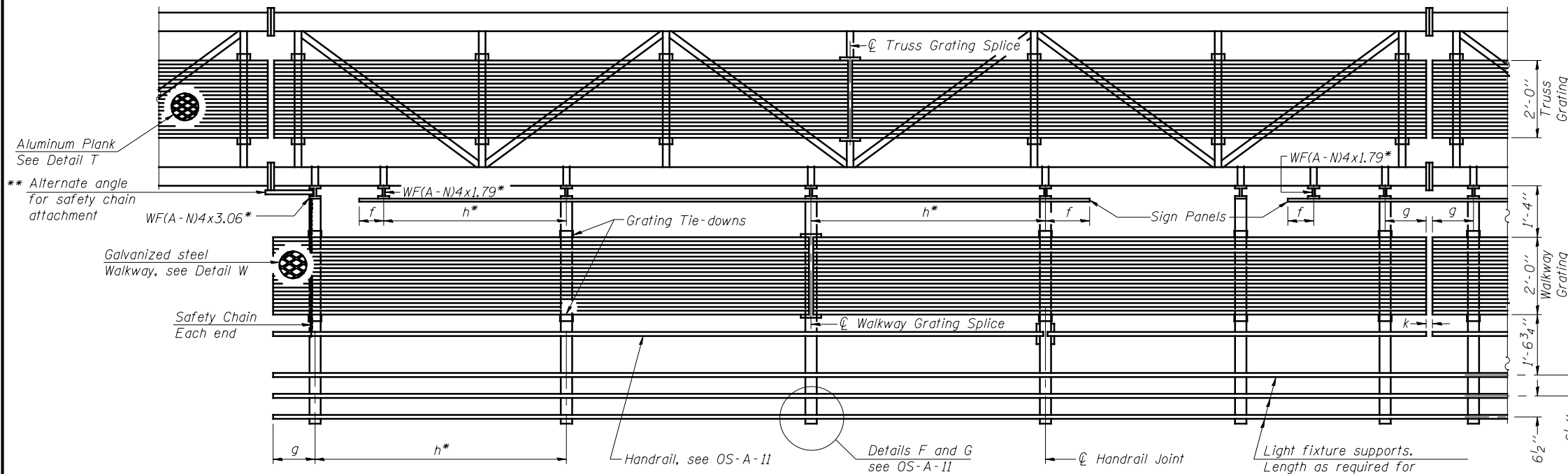
TYPICAL FRONT ELEVATION

With lights and handrail omitted for clarity. For Section B-B, see Base Sheet OS-A-10.

Truss grating to facilitate inspection shall run full length (center to center of support frames) ±12" on overhead trusses. Cost of truss grating is included in "Overhead Sign Structure".



PLAN WALKWAY AND HANDRAIL SKETCH
(Road plan beneath truss varies)



SECTION A-A

Handrail and walkway shall span a minimum of three brackets between splices and/or gap joints. Place all sign and walkway brackets as close to panel points as practical. Handrail joints, grating, and light support splices placed as needed.

Note: Details shown are considered equal alternatives to the Aluminum Walkway on Base Sheet OS-A-9, and may be substituted by Contractor at no change in contract cost.

Walkway and Truss Grating width dimensions are nominal and may vary ±1/2" based on available standard widths.

BRACKET TABLE

| Sign Width | | Number Brackets Required |
|--------------|-----------------------|--------------------------|
| Greater Than | Less Than or Equal To | |
| | 8'-0" | 2 |
| 8'-0" | 14'-0" | 3 |
| 14'-0" | 20'-0" | 4 |
| 20'-0" | 26'-0" | 5 |
| 26'-0" | 32'-0" | 6 |

Notes:

* Space walkway brackets WF(A-N)4x3.06 and sign brackets WF(A-N)4x1.79 for efficiency and within limits shown:

f = 12" maximum, 4" minimum (End of sign to center of nearest bracket)
g = 12" maximum, 4" minimum (End of walkway grating to center of nearest support bracket)

h = 6'-0" maximum (center to center of sign and/or walkway support brackets, WF(A-N)4x1.79 or WF(A-N)4x3.06)

k = 2" maximum gap between adjacent walkway grating sections and handrail ends

** If walkway bracket at safety chain location is behind sign, add angle to bracket, see Alternate Safety Chain Attachment on Base Sheet OS-A-11.

For Details T and W, Section B-B and Grating Splice Details see Base Sheet OS-A-10.

For handrail details see base sheet OS-A-11.

| Structure Number | Station | a | b | c | d | e | Walkway Grating and Handrail Lengths |
|------------------|---------|--------|--------|--------|---|---|--------------------------------------|
| 7S0251057R162.0 | 2290+50 | 16'-0" | 57'-0" | 13'-0" | - | - | 57'-0" |
| 7S0251057R162.7 | 2326+30 | 17'-6" | 41'-0" | 15'-6" | - | - | 41'-0" |
| 7S0251057R163.4 | 2351+00 | 18'-0" | 52'-0" | 14'-0" | - | - | 52'-0" |
| 7S0251070L098.6 | 2387+00 | 18'-0" | 41'-0" | 18'-0" | - | - | 41'-0" |
| 7S0251070L099.1 | 2412+00 | 9'-6" | 41'-0" | 9'-6" | - | - | 41'-0" |

OS-A-9S

6-1-12

| | | | |
|--------------|-------------|----------------|-----------|
| FILE NAME = | USER NAME = | DESIGNED - ESW | REVISED - |
| | | CHECKED - JWS | REVISED - |
| PLOT SCALE = | | DRAWN - PDB | REVISED - |
| PLOT DATE = | | CHECKED - BRM | REVISED - |

STATE OF ILLINOIS
DEPARTMENT OF TRANSPORTATION

OVERHEAD SIGN STRUCTURES
ALTERNATE WALKWAY DETAILS

SHEET NO. 31 OF 53 SHEETS

| | | | | |
|--------------------|---------|-----------|---------------------------|-----------|
| F.A.I. RTE. | SECTION | COUNTY | TOTAL SHEETS | SHEET NO. |
| 57/70 | (25-4R) | EFFINGHAM | 1760 | 418 |
| CONTRACT NO. 74295 | | | ILLINOIS FED. AID PROJECT | |