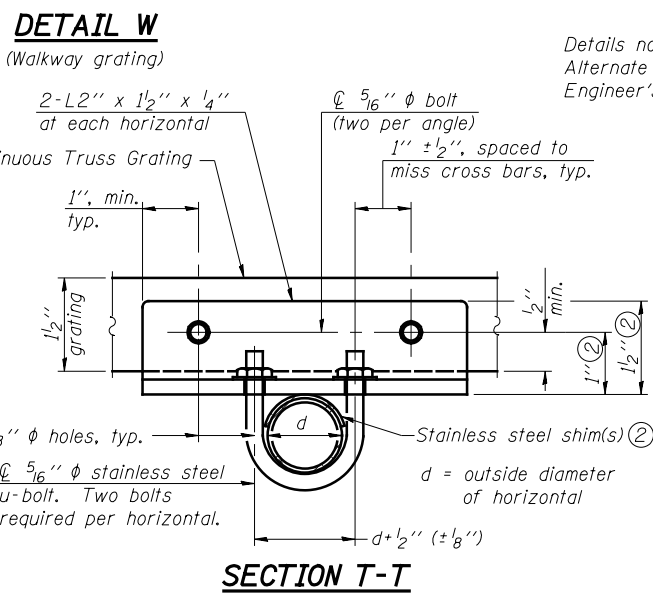
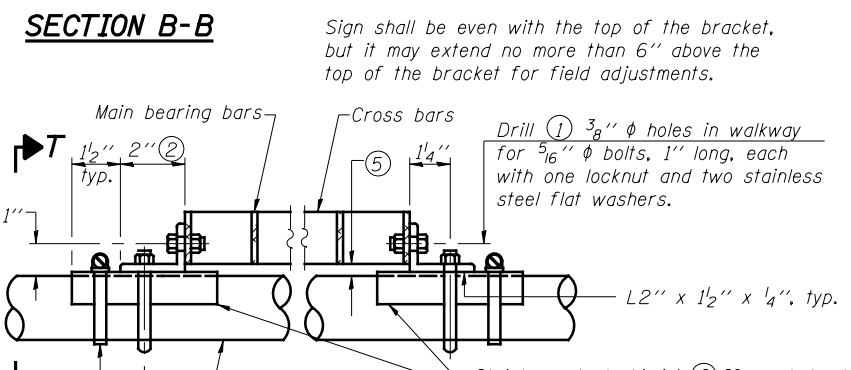
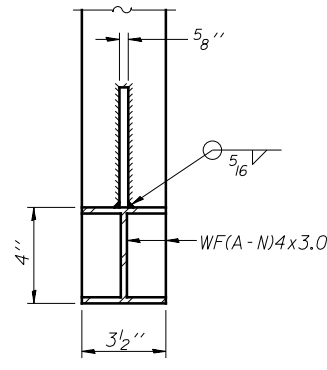
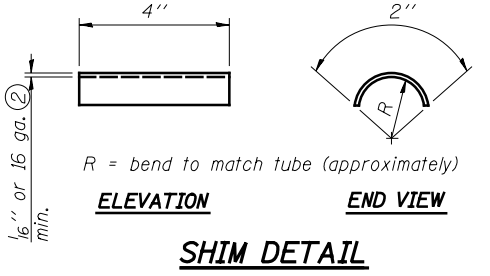


SPECIFICATIONS FOR STANDARD ALUMINUM GRATING
 Main Bearing Bars (MBB) shall be 3/16" x 1 1/2" on 1 3/16" centers and conform to ASTM B211 Alloy 6061-T6.
 Cross bars (CB) shall be 3/16" x 1 1/2" on 4" centers and conform to ASTM B221 Alloy 6063-T5 or 6061-T6.

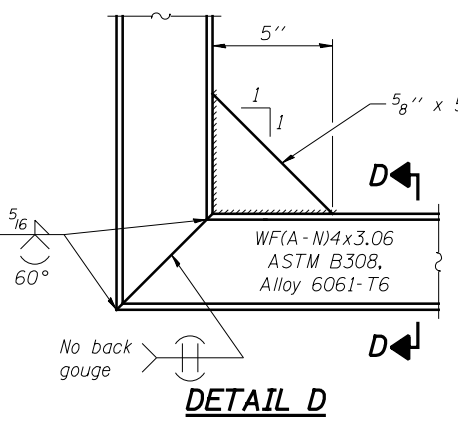
OR
 Aluminum Grating with modified "t" sections for main bearing bars shall meet the following requirements:
 Main bars shall conform to ASTM B221 Alloy 6061-T6 and have a minimum section modulus equal to 0.0705 in.³ per bar, a depth of 1 1/2", spaced on 1 3/16" centers.
 Cross bars shall conform to ASTM B221 Alloy 6063-T5 or T-42 and spaced on 4" centers.



DETAIL T'
 (Truss grating splice)
 Details not shown same as Detail T. Alternate materials may be used subject to the Engineer's review and approval.



SECTION D-D
 Screw type stainless steel tube clamp at shim location



DETAIL T
 (Continuous Truss grating)

Structure Number	Station	A	(6) B	C	(6) D
7C025I057L161.8	2280+10	7"	7'-0"	5'-6"	13'-0"
7C025I057L162.5	2316+90	7"	6'-0"	5'-6"	12'-0"
7C025I057L162.8	2331+00	7"	7'-0"	5'-6"	13'-0"
7C025I057R163.0	24+75	7"	7'-0"	5'-6"	13'-0"

- Drilling holes in grating may be done in shop or field, based on Contractor's preference and subject to accurate alignment.
- Stainless steel shims shall be placed as shown in Detail T if needed to compensate for alignment variations between horizontal and diagonal pipes beyond adjustment provided by angles. Thicker shims may be used subject to shims performing properly.
- If Handrail Joint present, weld angle to WF(A-N)4 and 1/4" extension bars. (See Base Sheet OSC-A-8.)
- 1/8" x 1/2" x 2" welded to handrail posts to protect locations that contact grating.
- Tube to grating gap may vary from 0 to 1/2", max. to align walkway, allow for camber, etc.
- Based on actual sign height, D_s, given on OSC-A-1.

OSC-A-7

6-1-12

FILE NAME =	USER NAME =	DESIGNED - ESW	REVISED - 4-27-11
		CHECKED - JWS	REVISED -
		DRAWN - PDB	REVISED -
		CHECKED - BRM	REVISED -

STATE OF ILLINOIS
 DEPARTMENT OF TRANSPORTATION

CANTILEVER SIGN STRUCTURES - WALKWAY DETAILS
 ALUMINUM TRUSS & STEEL POST

F.A.I. RTE. 57/70	SECTION (25-4R)	COUNTY EFFINGHAM	TOTAL SHEETS 1760	SHEET NO. 433
CONTRACT NO. 74295			ILLINOIS FED. AID PROJECT	

SHEET NO. 46 OF 53 SHEETS